

KANSAS CORPORATION COMMISSION
OIL & GAS CONSERVATION DIVISION

TEMPORARY ABANDONMENT WELL APPLICATION

OPERATOR: License# _____
 Name: _____
 Address 1: _____
 Address 2: _____
 City: _____ State: _____ Zip: _____ + _____
 Contact Person: _____
 Phone:(_____) _____
 Contact Person Email: _____
 Field Contact Person: _____
 Field Contact Person Phone: (_____) _____

API No. 15- _____
 Spot Description: _____
 _____ - _____ - _____ - _____ Sec. _____ Twp. _____ S. R. _____ E W
 _____ feet from N / S Line of Section
 _____ feet from E / W Line of Section
 GPS Location: Lat: _____, Long: _____
(e.g. xx.xxxxx) (e.g. -xxx.xxxxx)
 Datum: NAD27 NAD83 WGS84
 County: _____ Elevation: _____ GL KB
 Lease Name: _____ Well #: _____
 Well Type: (check one) Oil Gas OG WSW Other: _____
 SWD Permit #: _____ ENHR Permit #: _____
 Gas Storage Permit #: _____
 Spud Date: _____ Date Shut-In: _____

| | Conductor | Surface | Production | Intermediate | Liner | Tubing |
|------------------|-----------|---------|------------|--------------|-------|--------|
| Size | | | | | | |
| Setting Depth | | | | | | |
| Amount of Cement | | | | | | |
| Top of Cement | | | | | | |
| Bottom of Cement | | | | | | |

Casing Fluid Level from Surface: _____ How Determined? _____ Date: _____
 Casing Squeeze(s): _____ to _____ w / _____ sacks of cement, _____ to _____ w / _____ sacks of cement. Date: _____
(top) (bottom) (top) (bottom)
 Do you have a valid Oil & Gas Lease? Yes No
 Depth and Type: Junk in Hole at _____ Tools in Hole at _____ Casing Leaks: Yes No Depth of casing leak(s): _____
(depth) (depth)
 Type Completion: ALT. I ALT. II Depth of: DV Tool: _____ w / _____ sacks of cement Port Collar: _____ w / _____ sack of cement
(depth) (depth)
 Packer Type: _____ Size: _____ Inch Set at: _____ Feet
 Total Depth: _____ Plug Back Depth: _____ Plug Back Method: _____

Geological Data:

| Formation Name | Formation Top | Formation Base | Completion Information |
|----------------|---------------|----------------|--|
| 1. _____ | At: _____ | to _____ Feet | Perforation Interval _____ to _____ Feet or Open Hole Interval _____ to _____ Feet |
| 2. _____ | At: _____ | to _____ Feet | Perforation Interval _____ to _____ Feet or Open Hole Interval _____ to _____ Feet |

UNDER PENALTY OF PERJURY I HEREBY ATTEST THAT THE INFORMATION CONTAINED HEREIN IS TRUE AND CORRECT TO THE BEST OF MY KNOWLEDGE

Submitted Electronically

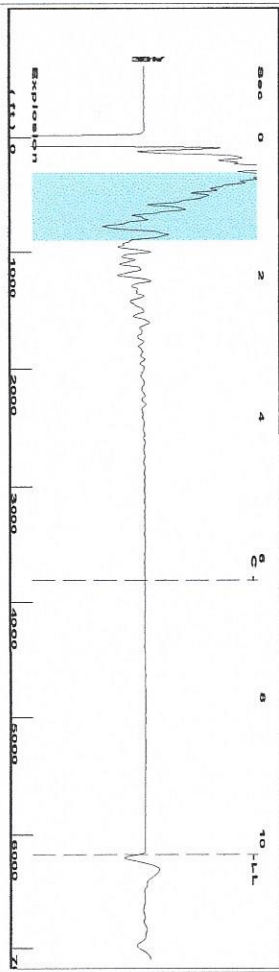
| | | | | | |
|---|--|----------------|---------------------|----------------------|---------------------------------|
| Do NOT Write in This Space - KCC USE ONLY | Date Tested: _____ | Results: _____ | Date Plugged: _____ | Date Repaired: _____ | Date Put Back in Service: _____ |
| | Review Completed by: _____ Comments: _____ | | | | |
| TA Approved: <input type="checkbox"/> Yes <input type="checkbox"/> Denied Date: _____ | | | | | |

Mail to the Appropriate KCC Conservation Office:

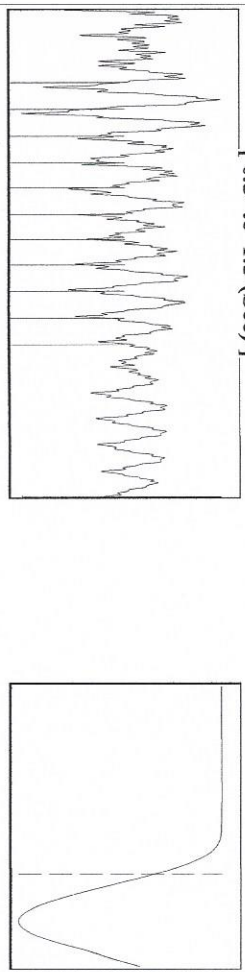
| | | |
|--|--|--------------------|
|  | KCC District Office #1 - 210 E. Frontview, Suite A, Dodge City, KS 67801 | Phone 620.682.7933 |
| | KCC District Office #2 - 3450 N. Rock Road, Building 600, Suite 601, Wichita, KS 67226 | Phone 316.337.7400 |
| | KCC District Office #3 - 137 E. 21st St., Chanute, KS 66720 | Phone 620.902.6450 |
| | KCC District Office #4 - 2301 E. 13th Street, Hays, KS 67601-2651 | Phone 785.261.6250 |

Shot @ 300 ft DH

Group: Liberal TAD Wells Well: Boles F2 (acquired on: 10/21/18 12:40:17)



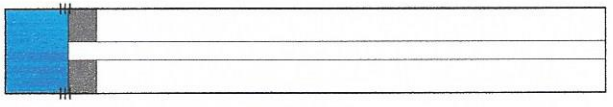
Filter Type High Pass Automatic Collar Count Yes
 Manual Acoustic Velocity 1174.07 ft/s Manual JTS/sec 18.5185
 Time 10.225 sec
 Joints 194.681 Jts
 Depth 6171.40 ft



Analysis Method: Automatic

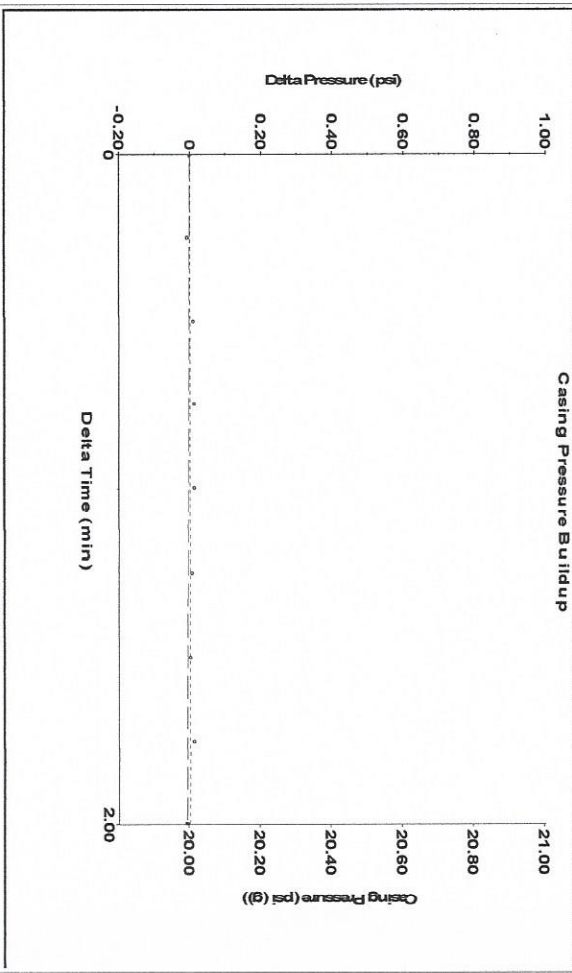
Group: Liberal TAD Wells Well: Boles F2 (acquired on: 10/21/18 12:40:17)

| | | | |
|-----------------------|-----------------|-------------------------------|---------------------|
| Production Current | Potential | Casing Pressure | Static |
| Oil -*- BBL/D | Oil -*- BBL/D | 20.0 psi (g) | Oil Column Height |
| Water -*- BBL/D | Water -*- BBL/D | -0.008 psi | MD 0 ft |
| Gas -*- Mscf/D | Gas -*- Mscf/D | 2.00 min | |
| IPR Method | Vogel | Gas/Liquid Interface Pressure | |
| PBHP/SBHP | -*- - | 26.2 psi (g) | |
| Production Efficiency | 0.0 | Liquid Level Depth | Water Column Height |
| Oil 40 deg API | | 6171.40 ft | MD 431 ft |
| Water 1.05 Sp.Gr.H2O | | Pump Intake Depth | |
| Gas 0.79 Sp.Gr.AIR | | 6566.00 ft | |
| Acoustic Velocity | 1207.12 ft/s | Formation Depth | |
| | | 6602.00 ft | |



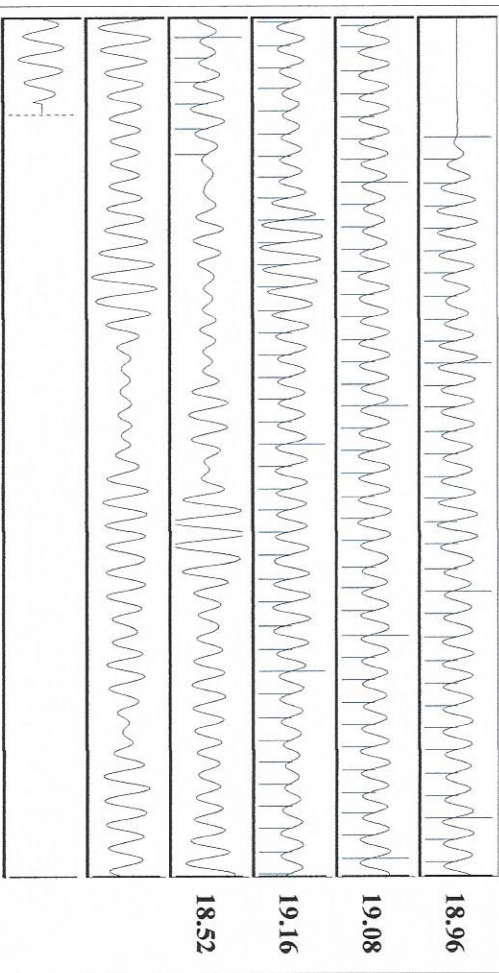
Acoustic Test

Group: Liberal TAD Wells Well: Boles F2 (acquired on: 10/21/18 12:40:17)



Change in Pressure -0.01 psi PTT11249 Range
 Change in Time 2.00 min 0 - 7 psi

Group: Liberal TAD Wells Well: Boles F2 (acquired on: 10/21/18 12:40:17)



| | | | |
|------------------------|-----------------|------------------------|---------|
| Acoustic Velocity | 1207.12 ft/s | Joints counted | 115 |
| Joints Per Second | 19.0397 Jts/sec | Joints to liquid level | 194.681 |
| Depth to liquid level | 6171.4 ft | Filter Width | 16.5185 |
| Automatic Collar Count | Yes | Time to 1st Collar | 0.276 |

STATE OF KANSAS

CORPORATION COMMISSION
CONSERVATION DIVISION
DISTRICT No. 1
210 E. FRONTVIEW, SUITE A
DODGE CITY, KS 67801



PHONE: 620-682-7933
<http://kcc.ks.gov/>

GOVERNOR JEFF COLYER, M.D.

SHARI FEIST ALBRECHT, CHAIR | JAY SCOTT EMLER, COMMISSIONER | DWIGHT D. KEEN, COMMISSIONER

October 23, 2018

Katherine McClurkan
Merit Energy Company, LLC
13727 Noel Street, Suite 1200
Dallas, TX 75240

Re: Temporary Abandonment
API 15-175-21707-00-01
Boles F 2
SW/4 Sec.02-35S-34W
Seward County, Kansas

Dear Katherine McClurkan:

"Your temporary abandonment (TA) application for the well listed above has been approved. In accordance with K.A.R. 82-3-111 the TA status of this well will expire 10/23/2019.

- * If you return this well to service or plug it, please notify the District Office.
- * If you sell this well you are required to file a Transfer of Operator form, T-1.
- * If the well will remain temporarily abandoned, you must submit a new TA application, CP-111, before 10/23/2019.

You may contact me at the number above if you have questions.

Very truly yours,

Michael Maier"