

KANSAS CORPORATION COMMISSION
OIL & GAS CONSERVATION DIVISION

TEMPORARY ABANDONMENT WELL APPLICATION

OPERATOR: License#
Name:
Address 1:
Address 2:
City: State: Zip:
Contact Person:
Phone:
Contact Person Email:
Field Contact Person:
Field Contact Person Phone:

API No. 15-
Spot Description:
Sec. Twp. S. R.
GPS Location: Lat: Long:
Datum: NAD27 NAD83 WGS84
County: Elevation:
Lease Name: Well #:
Well Type: Oil Gas OG WSW Other:
SWD Permit #: ENHR Permit #:
Gas Storage Permit #:
Spud Date: Date Shut-In:

Table with 7 columns: Conductor, Surface, Production, Intermediate, Liner, Tubing. Rows include Size, Setting Depth, Amount of Cement, Top of Cement, Bottom of Cement.

Casing Fluid Level from Surface: How Determined? Date:
Casing Squeeze(s): to w / sacks of cement, to w / sacks of cement. Date:
Do you have a valid Oil & Gas Lease? Yes No
Depth and Type: Junk in Hole at Tools in Hole at Casing Leaks: Yes No Depth of casing leak(s):
Type Completion: ALT. I ALT. II Depth of: DV Tool: w / sacks of cement Port Collar: w / sack of cement
Packer Type: Size: Inch Set at: Feet
Total Depth: Plug Back Depth: Plug Back Method:

Geological Data:

Table with 4 columns: Formation Name, Formation Top, Formation Base, Completion Information. Rows 1 and 2.

UNDER PENALTY OF PERJURY I HEREBY ATTEST THAT THE INFORMATION CONTAINED HEREIN IS TRUE AND CORRECT TO THE BEST OF MY KNOWLEDGE

Submitted Electronically

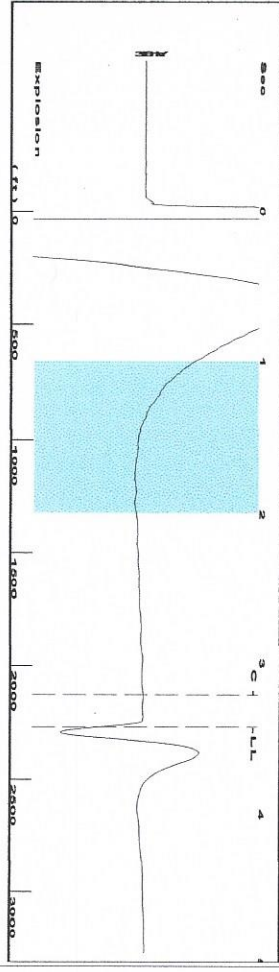
Do NOT Write in This Space - KCC USE ONLY
Date Tested: Results: Date Plugged: Date Repaired: Date Put Back in Service:
Review Completed by: Comments:
TA Approved: Yes Denied Date:

Mail to the Appropriate KCC Conservation Office:

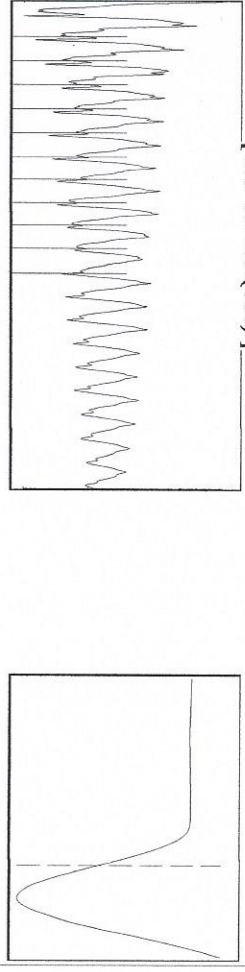
Table with 2 columns: Office Address, Phone. Rows for District Office #1, #2, #3, #4.

Sheet 2 of 300# 08

Group: Liberal TAD Wells Well: Boles F5 (acquired on: 10/21/18 12:52:44)



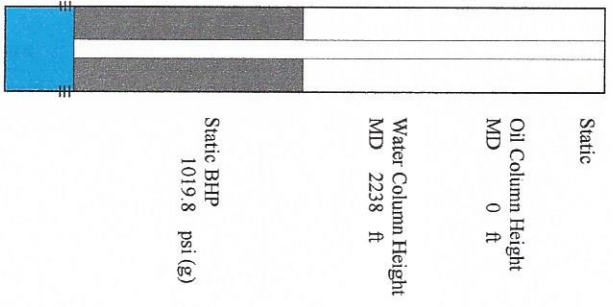
Filter Type High Pass
 Manual Acoustic Velocity 1299.18 ft/s
 Automatic Collar Count Yes
 Manual JTS/sec 20.4918
 Time 3.426 sec
 Joints 71.664 Jts
 Depth 2271.75 ft



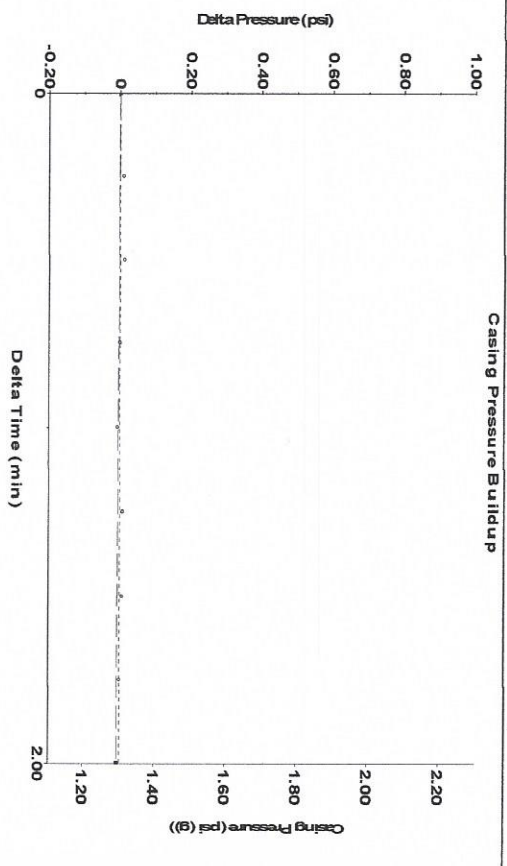
Analysis Method: Automatic

Group: Liberal TAD Wells Well: Boles F5 (acquired on: 10/21/18 12:52:44)

Production Current	Potential	Casing Pressure	Static
Oil -*- Water -*- Gas -*-	-*- BBL/D -*- BBL/D -*- Mscf/D	1.3 psi (g) Casing Pressure Buildup -0.008 psi 2.00 min Gas/Liquid Interface Pressure 2.2 psi (g)	Oil Column Height MD 0 ft
IPR Method PBHP/SBHP Production Efficiency	Vogel -*- 0.0	Liquid Level Depth 2271.75 ft Pump Intake Depth 4428.00 ft Formation Depth 4510.00 ft	Water Column Height MD 2238 ft
Oil 40 deg API Water 1.05 Sp.Gr.H2O Gas 0.67 Sp.Gr.AIR		Acoustic Velocity 1326.18 ft/s	Static BHP 1019.8 psi (g)

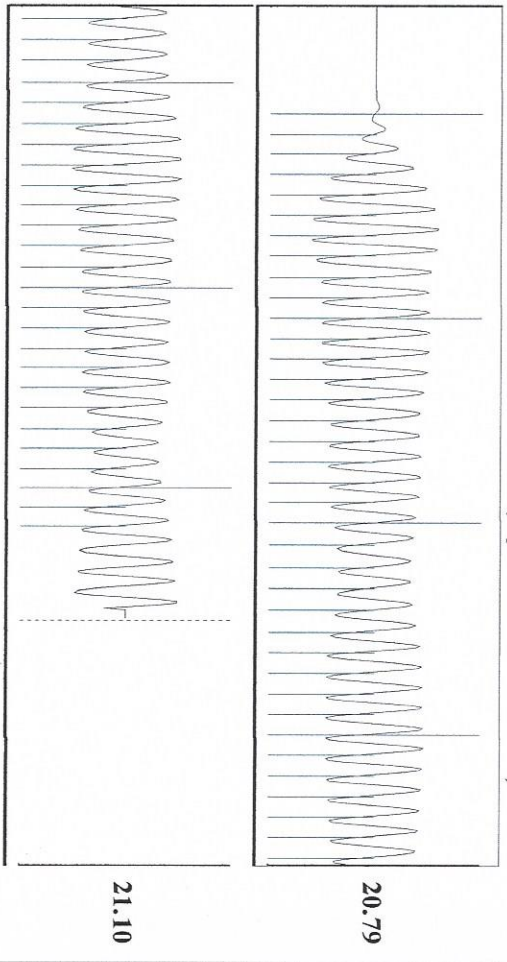


Group: Liberal TAD Wells Well: Boles F5 (acquired on: 10/21/18 12:52:44)



Change in Pressure -0.01 psi
 Change in Time 2.00 min
 PTT11249
 Range 0 - ? psi

Group: Liberal TAD Wells Well: Boles F5 (acquired on: 10/21/18 12:52:44)



Acoustic Velocity 1326.18 ft/s
 Joints Per Second 20.9177 Jts/sec
 Depth to liquid level 2271.75 ft
 Automatic Collar Count Yes

Joints counted 62
 Joints to liquid level 71.664
 Filter Width 18.4918
 Time to 1st Collar 3.212

STATE OF KANSAS

CORPORATION COMMISSION
CONSERVATION DIVISION
DISTRICT No. 1
210 E. FRONTVIEW, SUITE A
DODGE CITY, KS 67801



PHONE: 620-682-7933
<http://kcc.ks.gov/>

GOVERNOR JEFF COLYER, M.D.

SHARI FEIST ALBRECHT, CHAIR | JAY SCOTT EMLER, COMMISSIONER | DWIGHT D. KEEN, COMMISSIONER

October 23, 2018

Katherine McClurkan
Merit Energy Company, LLC
13727 Noel Road, Suite 1200
Dallas, TX 75240

Re: Temporary Abandonment
API 15-175-21794-00-00
Boles F 5
SW/4 Sec.02-35S-34W
Seward County, Kansas

Dear Katherine McClurkan:

"Your temporary abandonment (TA) application for the well listed above has been approved. In accordance with K.A.R. 82-3-111 the TA status of this well will expire 10/23/2019.

- * If you return this well to service or plug it, please notify the District Office.
- * If you sell this well you are required to file a Transfer of Operator form, T-1.
- * If the well will remain temporarily abandoned, you must submit a new TA application, CP-111, before 10/23/2019.

You may contact me at the number above if you have questions.

Very truly yours,

Michael Maier"