

KANSAS CORPORATION COMMISSION
OIL & GAS CONSERVATION DIVISION

Form must be Typed
Form must be signed

TEMPORARY ABANDONMENT WELL APPLICATION

All blanks must be complete

OPERATOR: License#
Name:
Address 1:
Address 2:
City: State: Zip:
Contact Person:
Phone:
Contact Person Email:
Field Contact Person:
Field Contact Person Phone:

API No. 15-
Spot Description:
Sec. Twp. S. R.
feet from N / S Line of Section
feet from E / W Line of Section
GPS Location: Lat: , Long:
Datum: NAD27 NAD83 WGS84
County: Elevation: GL KB
Lease Name: Well #:
Well Type: Oil Gas OG WSW Other:
SWD Permit #: ENHR Permit #:
Gas Storage Permit #:
Spud Date: Date Shut-In:

Table with 7 columns: Conductor, Surface, Production, Intermediate, Liner, Tubing. Rows include Size, Setting Depth, Amount of Cement, Top of Cement, Bottom of Cement.

Casing Fluid Level from Surface: How Determined? Date:
Casing Squeeze(s): to w / sacks of cement, to w / sacks of cement. Date:
Do you have a valid Oil & Gas Lease? Yes No
Depth and Type: Junk in Hole at Tools in Hole at Casing Leaks: Yes No Depth of casing leak(s):
Type Completion: ALT. I ALT. II Depth of: DV Tool: w / sacks of cement Port Collar: w / sack of cement
Packer Type: Size: Inch Set at: Feet
Total Depth: Plug Back Depth: Plug Back Method:

Geological Date:

Table with 4 columns: Formation Name, Formation Top, Formation Base, Completion Information. Rows 1 and 2.

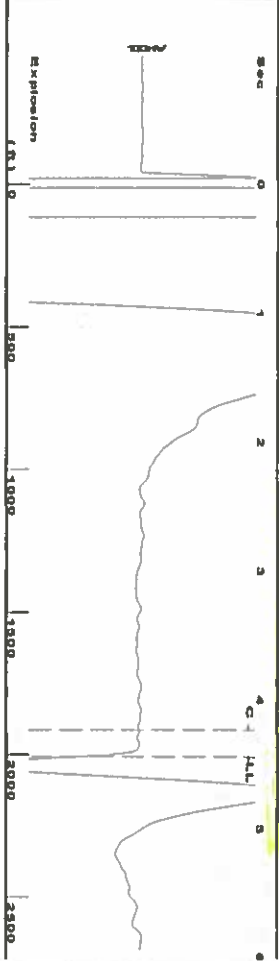
UNDER PENALTY OF PERJURY I HEREBY ATTEST THAT THE INFORMATION CONTAINED HEREIN IS TRUE AND CORRECT TO THE BEST OF MY KNOWLEDGE

Submitted Electronically

Do NOT Write in This Space - KCC USE ONLY
Date Tested: Results: Date Plugged: Date Repaired: Date Put Back in Service:
Review Completed by: Comments:
TA Approved: Yes Denied Date:

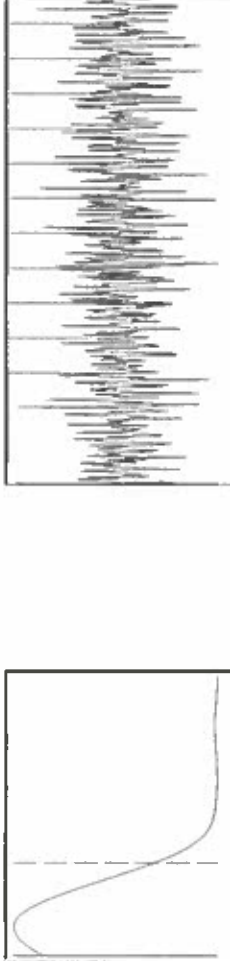
Mail to the Appropriate KCC Conservation Office:

Table with 3 columns: District Office #, Address, Phone. Rows 1-4.



Filter Type: High Pass
 Manual Acoustic Velocity: 903.825 ft/s
 Automatic Collar Count: Yes
 Manual JTS/sec: 13.9276
 Time: 4.441 sec
 Joints: 63.3105 Jts
 Depth: 2006.94 ft

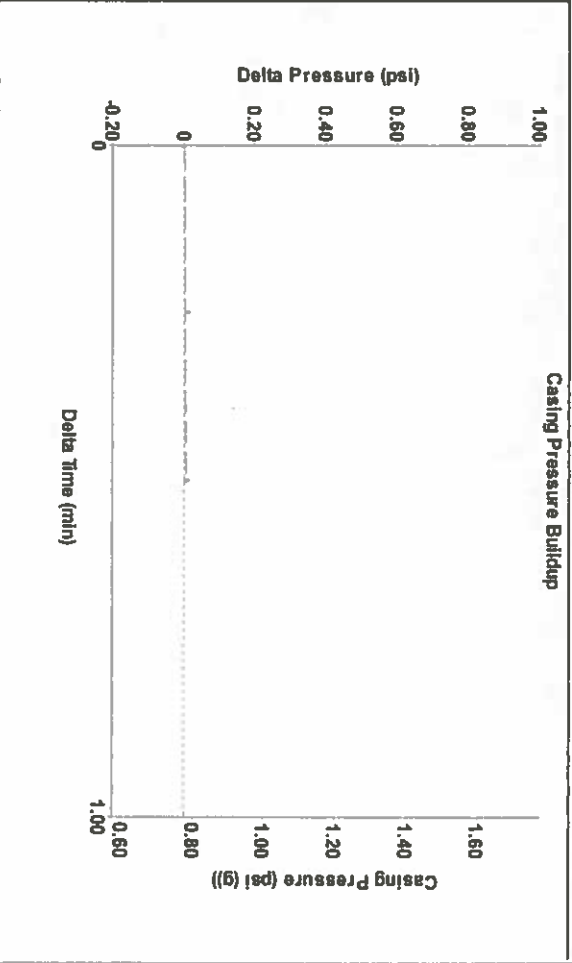
2.5 to 3.5 (Sec)



Analysis Method: Automatic

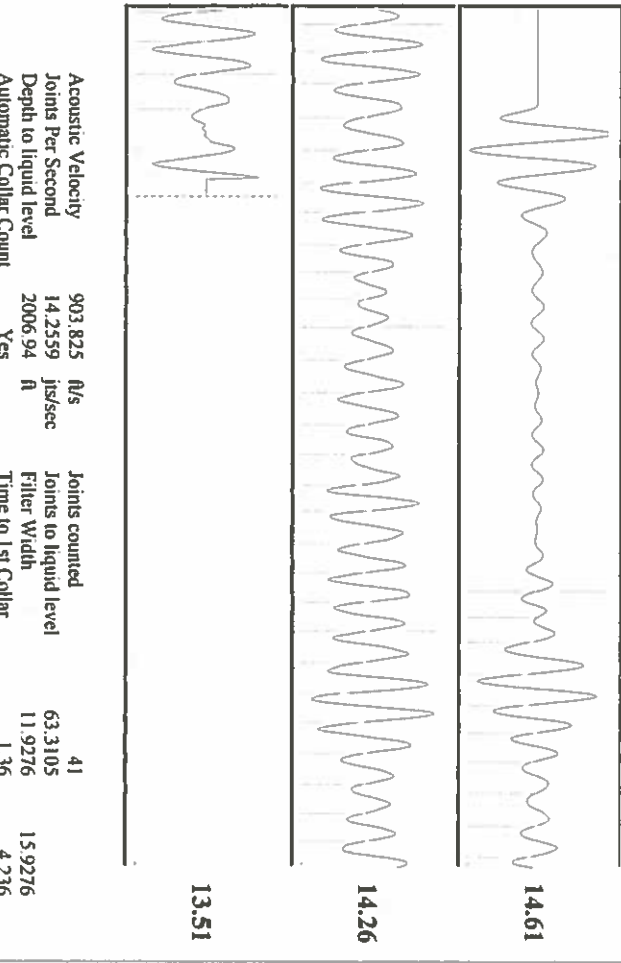
Group: Merit Energy Company-Ulysses Well: KU 7 (acquired on: 09/27/18 13:35:59)

Production	Potential	Casing Pressure	Producing
Oil: -*-	BBL/D: -*-	0.8 psi (g)	Annular Gas Flow: 0 MscFD
Water: -*-	BBL/D: -*-	Casing Pressure Buildup: 0.006 psi	% Liquid: 100 %
Gas: -*-	MscFD: -*-	0.50 min	
IPR Method: Vogel		Gas/Liquid Interface Pressure: 2.0 psi (g)	
PBHP/SBHP: -*-			
Production Efficiency: 0.0			
Oil: 40 deg API		Liquid Level Depth: 2006.94 ft	
Water: 1.05 Sp.Gr.H2O		Pump Intake Depth: 5722.00 ft	
Gas: 1.06 Sp.Gr.AIR		Formation Depth: 5631.00 ft	
Acoustic Velocity: 903.825 ft/s			
Formation Submergence			
Total Gaseous Liquid Column HT (TVD): 3715 ft			
Equivalent Gas Free Liquid HT (TVVD): 3715 ft			
Acoustic Test			
Trn: Frydendall-Fluid Level Technician			



Change in Pressure: 0.01 psi
 Change in Time: 0.50 min
 PT9522 Range
 0 - 7 psi

Group: Merit Energy Company-Ulysses Well: KU 7 (acquired on: 09/27/18 13:35:59)



Acoustic Velocity: 903.825 ft/s
 Joints Per Second: 14.2559 Jts/Sec
 Depth to liquid level: 2006.94 ft
 Automatic Collar Count: Yes

Joints counted: 41
 Joints to liquid level: 63.3105
 Filter Width: 11.9276
 Time to 1st Collar: 1.36

STATE OF KANSAS

CORPORATION COMMISSION
CONSERVATION DIVISION
DISTRICT No. 1
210 E. FRONTVIEW, SUITE A
DODGE CITY, KS 67801



PHONE: 620-682-7933
<http://kcc.ks.gov/>

GOVERNOR JEFF COLYER, M.D.

SHARI FEIST ALBRECHT, CHAIR | JAY SCOTT EMLER, COMMISSIONER | DWIGHT D. KEEN, COMMISSIONER

October 09, 2018

Katherine McClurkan
Merit Energy Company, LLC
13727 Noel Road, Suite 1200
Dallas, TX 75240

Re: Temporary Abandonment
API 15-187-21099-00-00
KU 7-J20-29-39
SE/4 Sec.20-29S-39W
Stanton County, Kansas

Dear Katherine McClurkan:

"Your temporary abandonment (TA) application for the well listed above has been approved. In accordance with K.A.R. 82-3-111 the TA status of this well will expire 10/09/2019.

- * If you return this well to service or plug it, please notify the District Office.
- * If you sell this well you are required to file a Transfer of Operator form, T-1.
- * If the well will remain temporarily abandoned, you must submit a new TA application, CP-111, before 10/09/2019.

You may contact me at the number above if you have questions.

Very truly yours,

Michael Maier"