

KANSAS CORPORATION COMMISSION
OIL & GAS CONSERVATION DIVISION

Form must be Typed
Form must be signed

TEMPORARY ABANDONMENT WELL APPLICATION

All blanks must be complete

OPERATOR: License#
Name:
Address 1:
Address 2:
City: State: Zip:
Contact Person:
Phone:
Contact Person Email:
Field Contact Person:
Field Contact Person Phone:

API No. 15-
Spot Description:
Sec. Twp. S. R.
GPS Location: Lat: Long:
Datum: NAD27 NAD83 WGS84
County: Elevation:
Lease Name: Well #:
Well Type: Oil Gas OG WSW Other:
SWD Permit #: ENHR Permit #:
Gas Storage Permit #:
Spud Date: Date Shut-In:

Table with 7 columns: Conductor, Surface, Production, Intermediate, Liner, Tubing. Rows include Size, Setting Depth, Amount of Cement, Top of Cement, Bottom of Cement.

Casing Fluid Level from Surface: How Determined? Date:
Casing Squeeze(s): to w / sacks of cement, to w / sacks of cement. Date:
Do you have a valid Oil & Gas Lease? Yes No
Depth and Type: Junk in Hole at Tools in Hole at Casing Leaks: Yes No Depth of casing leak(s):
Type Completion: ALT. I ALT. II Depth of: DV Tool: w / sacks of cement Port Collar: w / sack of cement
Packer Type: Size: Inch Set at: Feet
Total Depth: Plug Back Depth: Plug Back Method:

Geological Data:

Table with 4 columns: Formation Name, Formation Top, Formation Base, Completion Information. Rows 1 and 2.

UNDER PENALTY OF PERJURY I HEREBY ATTEST THAT THE INFORMATION CONTAINED HEREIN IS TRUE AND CORRECT TO THE BEST OF MY KNOWLEDGE

Submitted Electronically

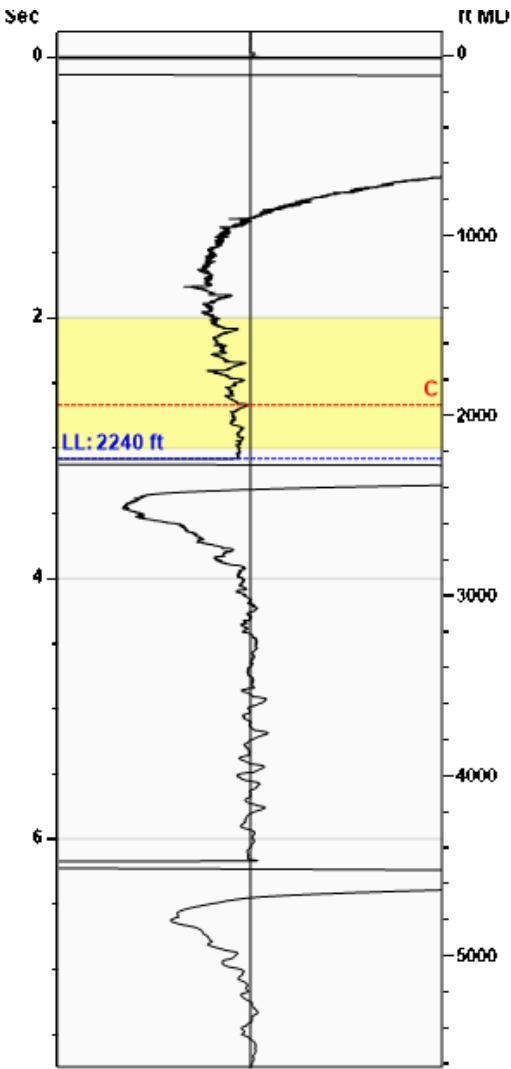
Do NOT Write in This Space - KCC USE ONLY
Date Tested: Results: Date Plugged: Date Repaired: Date Put Back in Service:
Review Completed by: Comments:
TA Approved: Yes Denied Date:

Mail to the Appropriate KCC Conservation Office:

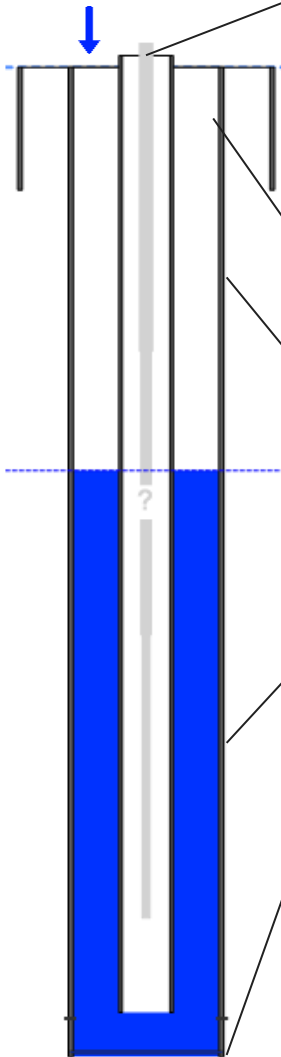
Table with 3 columns: District Office, Address, Phone. Rows for District Office #1, #2, #3, #4.

Liquid Level 2240 ft MD

Fluid Above Tubing 3010 ft TVD
Gas Free Above Tubing 3010 ft TVD



Gun - WG 1402



Production

Date Entered	08/17/14		
Oil	Current	Potential	
Water	0	**	BBL/D
Gas	60	**	BBL/D
	998.0	**	Mscf/D
IPR Method	Vogel		
PBHP/SBHP	-0.00		
Producing Efficiency	0.00%		

Casing Pressure

Pressure	33.2 psi (g)
----------	--------------

Annular Gas Flow

Gas Flow	0.0 Mscf/D
----------	------------

Fluid Properties

% Liquid Above Tubing	100.00%
% Liquid Below Tubing	100.00%

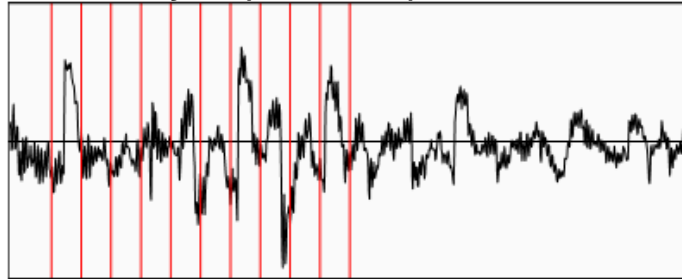
Depths

Tubing Depth	5250 ft
Formation Depth	5292 ft

Wellbore Pressures

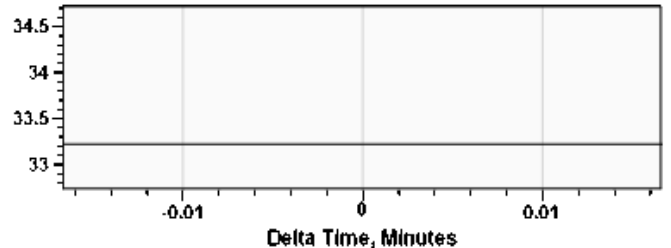
TIP	1403.7 psi (g)
PBHP	1422.8 psi (g)
SBHP	**
Gas/Liq Interface	35.3 psi (g)

Collar Analysis (Automatic)



Average Acoustic Velocity 1448 ft/s
Average Joints Per Sec. 23.30 Jts/sec
Joints To Liquid 71.78 Jts

Casing Pressure Buildup



Casing Pressure 33.2 psi (g)
Buildup 0.0 psi (g)
Buildup Time 0 sec
Gas Gravity from Collar Analysis (Automatic) 0.5500 Air = 1

Comments and Recommendations

Acoustic Test

FALCON EXPLORATION/PPI
125 N MARKET #1252
WICHITA, KS 67202
316.262.1378

STATE OF KANSAS

CORPORATION COMMISSION
CONSERVATION DIVISION
DISTRICT No. 1
210 E. FRONTVIEW, SUITE A
DODGE CITY, KS 67801



PHONE: 620-682-7933
<http://kcc.ks.gov/>

GOVERNOR JEFF COLYER, M.D.

SHARI FEIST ALBRECHT, CHAIR | JAY SCOTT EMLER, COMMISSIONER | DWIGHT D. KEEN, COMMISSIONER

August 07, 2018

CYNDE WOLF
Falcon Exploration, Inc.
125 N MARKET STE 1252
SUITE 1252
WICHITA, KS 67202-1719

Re: Temporary Abandonment
API 15-025-21388-00-01
YOUNG BROTHERS 1-34
SW/4 Sec.34-30S-22W
Clark County, Kansas

Dear CYNDE WOLF:

"Your temporary abandonment (TA) application for the well listed above has been approved. In accordance with K.A.R. 82-3-111 the TA status of this well will expire 08/07/2019.

- * If you return this well to service or plug it, please notify the District Office.
- * If you sell this well you are required to file a Transfer of Operator form, T-1.
- * If the well will remain temporarily abandoned, you must submit a new TA application, CP-111, before 08/07/2019.

You may contact me at the number above if you have questions.

Very truly yours,

Michael Maier"