

KANSAS CORPORATION COMMISSION
OIL & GAS CONSERVATION DIVISION

TEMPORARY ABANDONMENT WELL APPLICATION

OPERATOR: License#
Name:
Address 1:
Address 2:
City: State: Zip:
Contact Person:
Phone:
Contact Person Email:
Field Contact Person:
Field Contact Person Phone:

API No. 15-
Spot Description:
Sec. Twp. S. R.
GPS Location: Lat, Long
Datum: NAD27, NAD83, WGS84
County: Elevation:
Lease Name: Well #:
Well Type: Oil, Gas, OG, WSW, Other
SWD Permit #: ENHR Permit #:
Gas Storage Permit #:
Spud Date: Date Shut-In:

Table with 7 columns: Conductor, Surface, Production, Intermediate, Liner, Tubing. Rows include Size, Setting Depth, Amount of Cement, Top of Cement, Bottom of Cement.

Casing Fluid Level from Surface: How Determined? Date:
Casing Squeeze(s): to w / sacks of cement, to w / sacks of cement. Date:
Do you have a valid Oil & Gas Lease? Yes No
Depth and Type: Junk in Hole at Tools in Hole at Casing Leaks: Yes No Depth of casing leak(s):
Type Completion: ALT. I ALT. II Depth of: DV Tool: w / sacks of cement Port Collar: w / sack of cement
Packer Type: Size: Inch Set at: Feet
Total Depth: Plug Back Depth: Plug Back Method:

Geological Data:

Table with 4 columns: Formation Name, Formation Top, Formation Base, Completion Information. Rows 1 and 2.

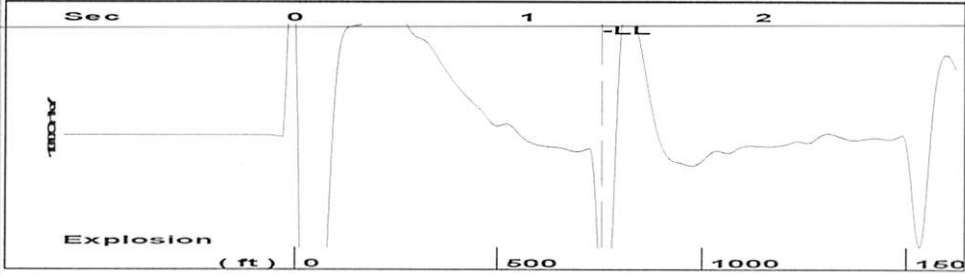
UNDER PENALTY OF PERJURY I HEREBY ATTEST THAT THE INFORMATION CONTAINED HEREIN IS TRUE AND CORRECT TO THE BEST OF MY KNOWLEDGE

Submitted Electronically

Do NOT Write in This Space - KCC USE ONLY
Date Tested: Results: Date Plugged: Date Repaired: Date Put Back in Service:
Review Completed by: Comments:
TA Approved: Yes Denied Date:

Mail to the Appropriate KCC Conservation Office:

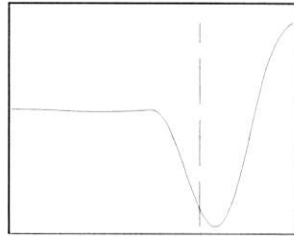
Table with 3 columns: District Office #, Address, Phone. Rows 1-4.



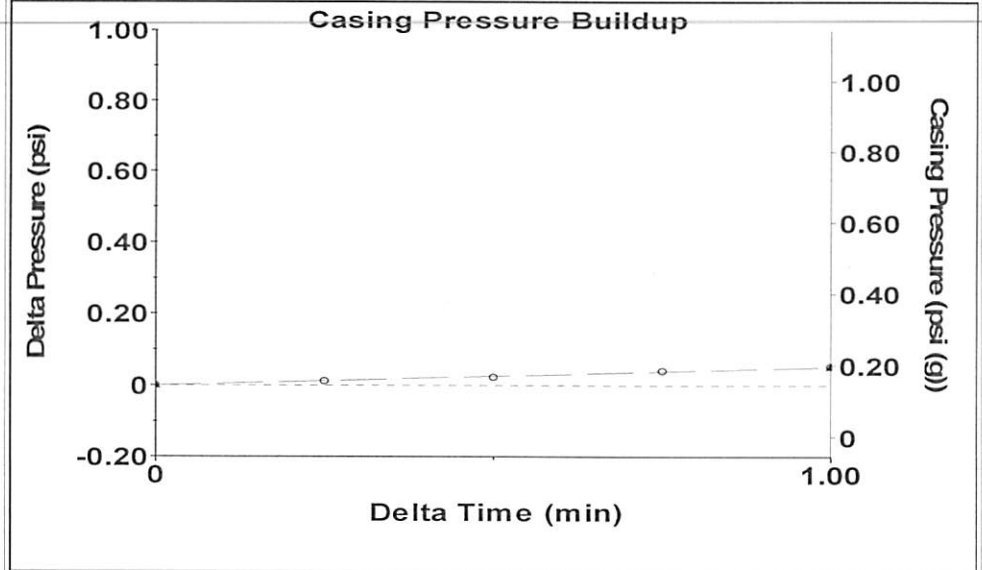
Time 1.314 sec
 Joints 23.8344 Jts
 Depth 755.55 ft

Liquid level calculated with user supplied Acoustic Velocity

Acoustic Velocity 1150 ft/s



Analysis Method: Acoustic Velocity



Change in Pressure 0.05 psi PT15469
 Range 0 - ? psi
 Change in Time 1.00 min

Production Current	Potential
Oil -*- 0.0 BBL/D	
Water -*- 0.0 BBL/D	
Gas -*- 0.0 Mscf/D	

IPR Method	Vogel
PBHP/SBHP	0.99
Production Efficiency	1.6

Oil	40 deg.API
Water	1.05 Sp.Gr.H2O
Gas	0.85 Sp.Gr.AIR

Acoustic Velocity 1150 ft/s

Formation Submergence	Depth
Total Gaseous Liquid Column HT (TVD)	3924 ft
Equivalent Gas Free Liquid HT (TVD)	3924 ft

Acoustic Test

Casing Pressure	0.1 psi (g)
Casing Pressure Buildup	0.052 psi
	1.00 min
Gas/Liquid Interface Pressure	0.5 psi (g)

Liquid Level Depth 755.55 ft

Tubing Intake Depth	4680.00 ft
Formation Depth	4680.00 ft



Producing
 Casing % Liquid 100 %

Tubing Intake	1784.7 psi (g)
Producing BHP	1784.7 psi (g)
Static BHP	1800.6 psi (g)

Entered Acoustic Velocity for Liquid Level depth determination

STATE OF KANSAS

CORPORATION COMMISSION
CONSERVATION DIVISION
DISTRICT No. 1
210 E. FRONTVIEW, SUITE A
DODGE CITY, KS 67801



PHONE: 620-682-7933
<http://kcc.ks.gov/>

GOVERNOR JEFF COLYER, M.D.

SHARI FEIST ALBRECHT, CHAIR | JAY SCOTT EMLER, COMMISSIONER | DWIGHT D. KEEN, COMMISSIONER

August 07, 2018

Kenneth C Gates
3G Production, LLC
10387 NE SR 61
PO BOX 847
PRATT, KS 67124

Re: Temporary Abandonment
API 15-097-21292-00-00
THORPE 2
SE/4 Sec.24-28S-16W
Kiowa County, Kansas

Dear Kenneth C Gates:

"Your temporary abandonment (TA) application for the well listed above has been approved. In accordance with K.A.R. 82-3-111 the TA status of this well will expire 08/07/2019.

- * If you return this well to service or plug it, please notify the District Office.
- * If you sell this well you are required to file a Transfer of Operator form, T-1.
- * If the well will remain temporarily abandoned, you must submit a new TA application, CP-111, before 08/07/2019.

You may contact me at the number above if you have questions.

Very truly yours,

Michael Maier"