

KANSAS CORPORATION COMMISSION
OIL & GAS CONSERVATION DIVISION

TEMPORARY ABANDONMENT WELL APPLICATION

OPERATOR: License#
Name:
Address 1:
Address 2:
City: State: Zip:
Contact Person:
Phone:
Contact Person Email:
Field Contact Person:
Field Contact Person Phone:

API No. 15-
Spot Description:
Sec. Twp. S. R.
GPS Location: Lat: Long:
Datum: NAD27 NAD83 WGS84
County: Elevation:
Lease Name: Well #:
Well Type: Oil Gas OG WSW Other:
SWD Permit #: ENHR Permit #:
Gas Storage Permit #:
Spud Date: Date Shut-In:

Table with 7 columns: Conductor, Surface, Production, Intermediate, Liner, Tubing. Rows include Size, Setting Depth, Amount of Cement, Top of Cement, Bottom of Cement.

Casing Fluid Level from Surface: How Determined? Date:
Casing Squeeze(s): to w / sacks of cement, to w / sacks of cement. Date:
Do you have a valid Oil & Gas Lease? Yes No
Depth and Type: Junk in Hole at Tools in Hole at Casing Leaks: Yes No Depth of casing leak(s):
Type Completion: ALT. I ALT. II Depth of: DV Tool: w / sacks of cement Port Collar: w / sack of cement
Packer Type: Size: Inch Set at: Feet
Total Depth: Plug Back Depth: Plug Back Method:

Geological Date:

Table with 4 columns: Formation Name, Formation Top, Formation Base, Completion Information. Rows 1 and 2.

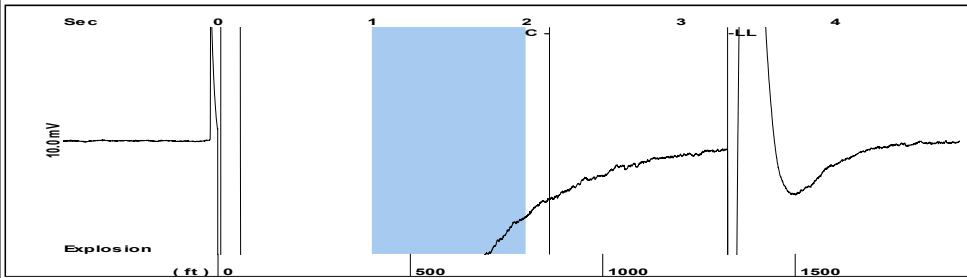
UNDER PENALTY OF PERJURY I HEREBY ATTEST THAT THE INFORMATION CONTAINED HEREIN IS TRUE AND CORRECT TO THE BEST OF MY KNOWLEDGE

Submitted Electronically

Do NOT Write in This Space - KCC USE ONLY
Date Tested: Results: Date Plugged: Date Repaired: Date Put Back in Service:
Review Completed by: Comments:
TA Approved: Yes Denied Date:

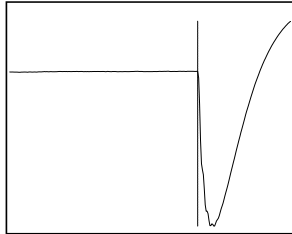
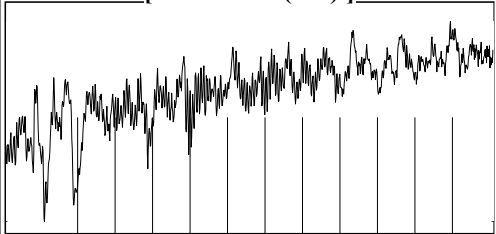
Mail to the Appropriate KCC Conservation Office:

Table with 2 columns: Office Address, Phone. Rows for District Office #1, #2, #3, #4.

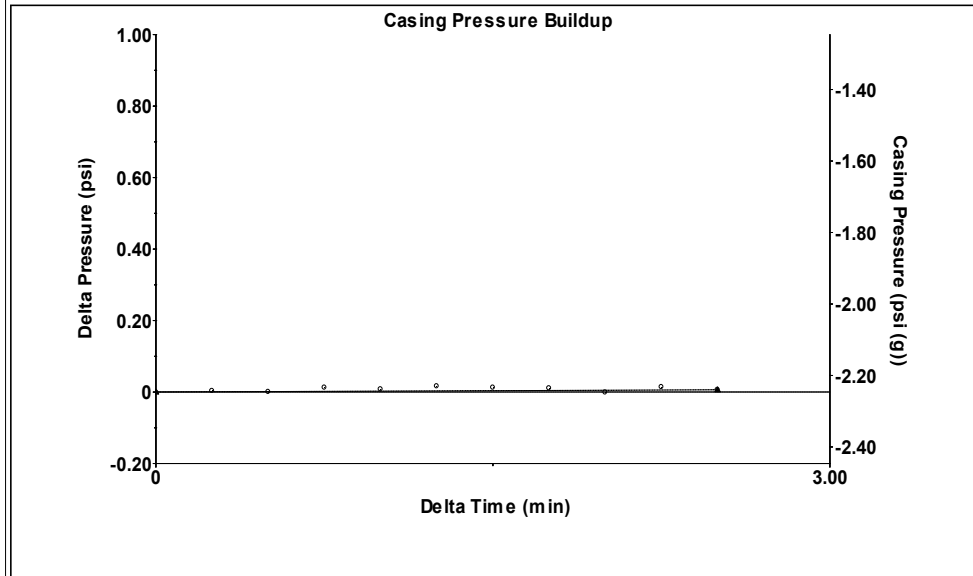


Filter Type High Pass Automatic Collar Count Yes Time 3.302 sec
 Manual Acoustic Velo 829.649 ft/s Manual JTS/sec 13.0039 Joints 41.5056 Jts
 Depth 1324.03 ft

[1.0 to 2.0 (Sec)]

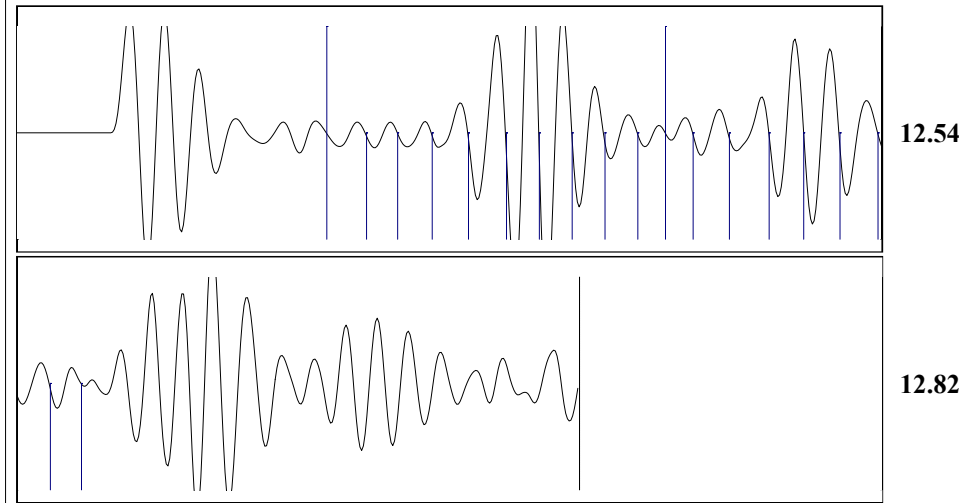


Analysis Method: Automatic



Change in Pressure 0.01 psi PT12865
 Change in Time 2.50 min Range 0 - ? psi

Production	Potential	Casing Pressure	Producing
Oil - * -	- * - BBL/D	-2.2 psi (g)	
Water - * -	- * - BBL/D	Casing Pressure Buildup	
Gas - * -	- * - Mscf/D	0.0 psi	
IPR Method	Vogel	2.50 min	Annular Gas Flow
PBHP/SBHP	- * -	Gas/Liquid Interface Pressure	0 Mscf/D
Production Efficiency	0.0	-1.6 psi (g)	% Liquid
			100 %
Oil 40 deg.API		Liquid Level Depth	
Water 1.05 Sp.Gr.H2O		1324.03 ft	
Gas 1.15 Sp.Gr.AIR		Pump Intake Depth	
		5420.00 ft	
Acoustic Velocity 801.955 ft/s		Formation Depth	
		5420.00 ft	
Formation Submergence		Pump Intake	
Total Gaseous Liquid Column HT (TVD)	4096 ft	1298.0 psi (g)	
Equivalent Gas Free Liquid HT (TVD)	4096 ft	Producing BHP	
		1298.0 psi (g)	
Acoustic Test		Static BHP	
		- * - psi (g)	



Acoustic Velocity 801.955 ft/s Joints counted 18
 Joints Per Second 12.5698 jts/sec Joints to liquid level 41.5056
 Depth to liquid level 1324.03 ft Filter Width 11.0039
 Automatic Collar Count Yes Time to 1st Collar 0.716 2.148

STATE OF KANSAS

CORPORATION COMMISSION
CONSERVATION DIVISION
DISTRICT No. 1
210 E. FRONTVIEW, SUITE A
DODGE CITY, KS 67801



PHONE: 620-682-7933
<http://kcc.ks.gov/>

GOVERNOR JEFF COLYER, M.D.

SHARI FEIST ALBRECHT, CHAIR | JAY SCOTT EMLER, COMMISSIONER | DWIGHT D. KEEN, COMMISSIONER

August 14, 2018

Melody C. Fletcher
Oil Producers, Inc. of Kansas
1710 WATERFRONT PKWY
WICHITA, KS 67206-6603

Re: Temporary Abandonment
API 15-033-20939-00-01
DONALD HERD 1-10 A
SE/4 Sec.10-33S-19W
Comanche County, Kansas

Dear Melody C. Fletcher:

"Your temporary abandonment (TA) application for the well listed above has been approved. In accordance with K.A.R. 82-3-111 the TA status of this well will expire 08/14/2019.

- * If you return this well to service or plug it, please notify the District Office.
- * If you sell this well you are required to file a Transfer of Operator form, T-1.
- * If the well will remain temporarily abandoned, you must submit a new TA application, CP-111, before 08/14/2019.

You may contact me at the number above if you have questions.

Very truly yours,

Michael Maier"