

KANSAS CORPORATION COMMISSION  
OIL & GAS CONSERVATION DIVISION

TEMPORARY ABANDONMENT WELL APPLICATION

OPERATOR: License# \_\_\_\_\_  
 Name: \_\_\_\_\_  
 Address 1: \_\_\_\_\_  
 Address 2: \_\_\_\_\_  
 City: \_\_\_\_\_ State: \_\_\_\_\_ Zip: \_\_\_\_\_ + \_\_\_\_\_  
 Contact Person: \_\_\_\_\_  
 Phone: ( \_\_\_\_\_ ) \_\_\_\_\_  
 Contact Person Email: \_\_\_\_\_  
 Field Contact Person: \_\_\_\_\_  
 Field Contact Person Phone: ( \_\_\_\_\_ ) \_\_\_\_\_

API No. 15- \_\_\_\_\_  
 Spot Description: \_\_\_\_\_  
 \_\_\_\_\_ - \_\_\_\_\_ - \_\_\_\_\_ - \_\_\_\_\_ Sec. \_\_\_\_\_ Twp. \_\_\_\_\_ S. R. \_\_\_\_\_  E  W  
 \_\_\_\_\_ feet from  N /  S Line of Section  
 \_\_\_\_\_ feet from  E /  W Line of Section  
 GPS Location: Lat: \_\_\_\_\_, Long: \_\_\_\_\_  
(e.g. xx.xxxxx) (e.g. -xxx.xxxxx)  
 Datum:  NAD27  NAD83  WGS84  
 County: \_\_\_\_\_ Elevation: \_\_\_\_\_  GL  KB  
 Lease Name: \_\_\_\_\_ Well #: \_\_\_\_\_  
 Well Type: (check one)  Oil  Gas  OG  WSW  Other: \_\_\_\_\_  
 SWD Permit #: \_\_\_\_\_  ENHR Permit #: \_\_\_\_\_  
 Gas Storage Permit #: \_\_\_\_\_  
 Spud Date: \_\_\_\_\_ Date Shut-In: \_\_\_\_\_

	Conductor	Surface	Production	Intermediate	Liner	Tubing
Size						
Setting Depth						
Amount of Cement						
Top of Cement						
Bottom of Cement						

Casing Fluid Level from Surface: \_\_\_\_\_ How Determined? \_\_\_\_\_ Date: \_\_\_\_\_  
 Casing Squeeze(s): \_\_\_\_\_ to \_\_\_\_\_ w / \_\_\_\_\_ sacks of cement, \_\_\_\_\_ to \_\_\_\_\_ w / \_\_\_\_\_ sacks of cement. Date: \_\_\_\_\_  
(top) (bottom) (top) (bottom)  
 Do you have a valid Oil & Gas Lease?  Yes  No  
 Depth and Type:  Junk in Hole at \_\_\_\_\_  Tools in Hole at \_\_\_\_\_ Casing Leaks:  Yes  No Depth of casing leak(s): \_\_\_\_\_  
(depth) (depth)  
 Type Completion:  ALT. I  ALT. II Depth of:  DV Tool: \_\_\_\_\_ w / \_\_\_\_\_ sacks of cement  Port Collar: \_\_\_\_\_ w / \_\_\_\_\_ sack of cement  
(depth) (depth)  
 Packer Type: \_\_\_\_\_ Size: \_\_\_\_\_ Inch Set at: \_\_\_\_\_ Feet  
 Total Depth: \_\_\_\_\_ Plug Back Depth: \_\_\_\_\_ Plug Back Method: \_\_\_\_\_

**Geological Data:**

Formation Name	Formation Top	Formation Base	Completion Information
1. _____	At: _____	to _____ Feet	Perforation Interval _____ to _____ Feet or Open Hole Interval _____ to _____ Feet
2. _____	At: _____	to _____ Feet	Perforation Interval _____ to _____ Feet or Open Hole Interval _____ to _____ Feet

UNDER PENALTY OF PERJURY I HEREBY ATTEST THAT THE INFORMATION CONTAINED HEREIN IS TRUE AND CORRECT TO THE BEST OF MY KNOWLEDGE

Submitted Electronically

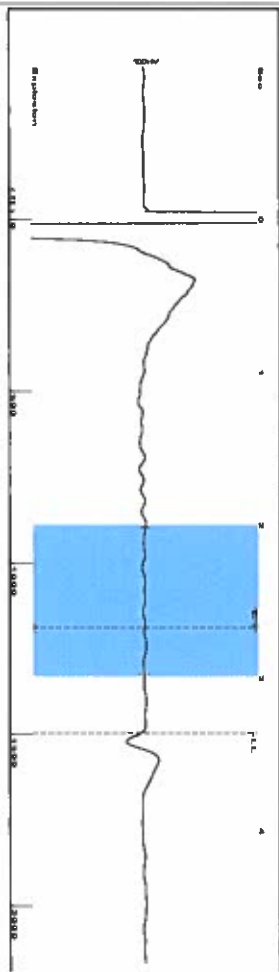
<b>Do NOT Write in This Space - KCC USE ONLY</b>	Date Tested: _____	Results: _____	Date Plugged: _____	Date Repaired: _____	Date Put Back in Service: _____
	Review Completed by: _____ Comments: _____				
TA Approved: <input type="checkbox"/> Yes <input type="checkbox"/> Denied Date: _____					

Mail to the Appropriate KCC Conservation Office:

	KCC District Office #1 - 210 E. Frontview, Suite A, Dodge City, KS 67801	Phone 620.682.7933
	KCC District Office #2 - 3450 N. Rock Road, Building 600, Suite 601, Wichita, KS 67226	Phone 316.337.7400
	KCC District Office #3 - 137 E. 21st St., Chanute, KS 66720	Phone 620.902.6450
	KCC District Office #4 - 2301 E. 13th Street, Hays, KS 67601-2651	Phone 785.261.6250

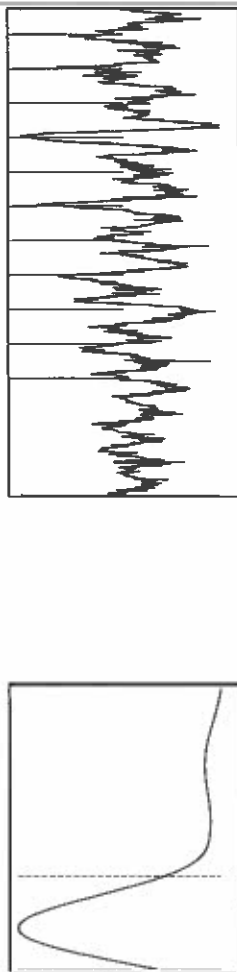
7A1D

Group: MyWells Well: turner c-1 (acquired on: 07/26/18 10:50:12)



Filter Type: High Pass Automatic Collar Count: Yes  
 Manual Acoustic Velocity: 0.17 ft/s Manual JTS/sec: 14.1643  
 Time: 3.358 sec  
 Joints: 47.185 ft/s  
 Depth: 1495.76 ft

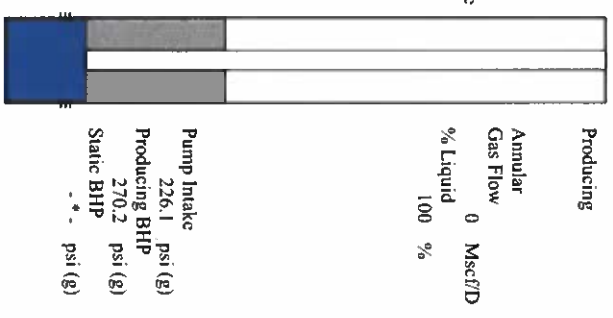
2.0 to 3.0 (Sec)



Analysis Method: Automatic

Group: MyWells Well: turner c-1 (acquired on: 07/26/18 10:50:12)

Production	Potential	Casing Pressure	Producing
Current	BBL/D	0.0 psi (g)	Annular
Oil	BBL/D	Casing Pressure Buildup	Gas Flow
Water	Mscf/D	psi	% Liquid
Gas	Mscf/D	min	100 %
IPR Method	Vogel	Gas/Liquid Interface Pressure	0 Mscf/D
PBHP/SBHP	psi	0.8 psi (g)	
Production Efficiency	0.0	Liquid Level Depth	
		1495.76 ft	
Oil	40 deg API	Pump Intake Depth	
Water	1.05 Sp.Gr.:H2O	2153.00 ft	
Gas	1.08 Sp.Gr.:AIR	Formation Depth	
		2250.00 ft	
Acoustic Velocity	890.867 ft/s		

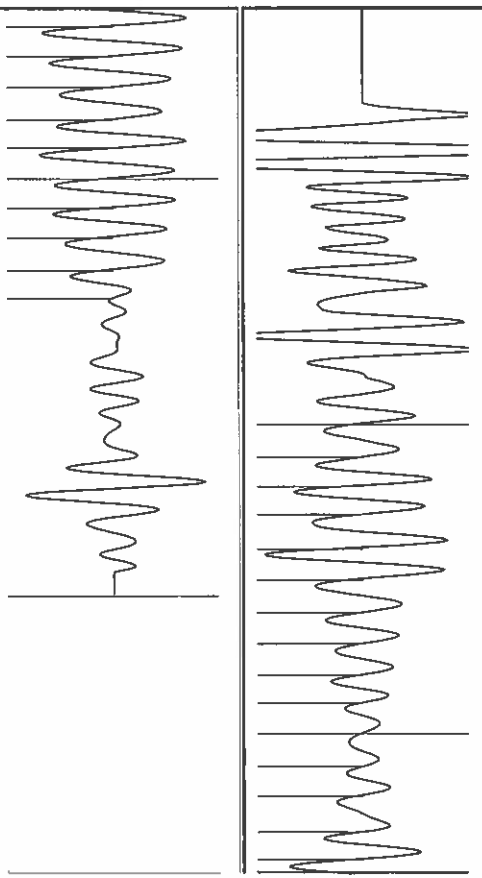


Group: MyWells Well: turner c-1 (acquired on: 07/26/18 10:50:12)

NO PRESSURE DATA AVAILABLE

Change in Pressure: 0.00 psi NONE Range  
 Change in Time: 0.00 min 0 - 2 psi

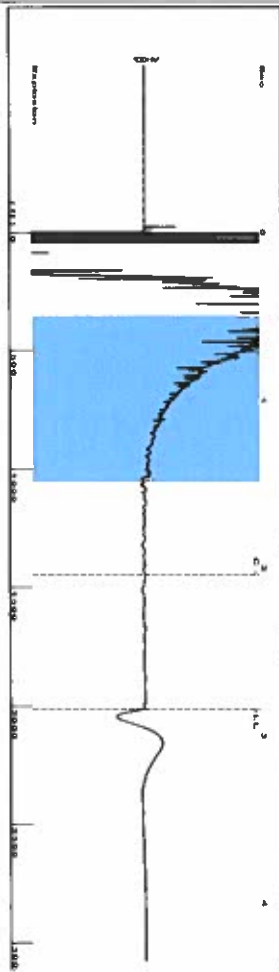
Group: MyWells Well: turner c-1 (acquired on: 07/26/18 10:50:12)



Acoustic Velocity: 890.867 ft/s Joints counted: 24  
 Joints Per Second: 14.0515 ft/s Joints to liquid level: 47.185  
 Depth to liquid level: 1495.76 ft Filter Width: 12.1643  
 Automatic Collar Count: Yes Time to 1st Collar: 0.96

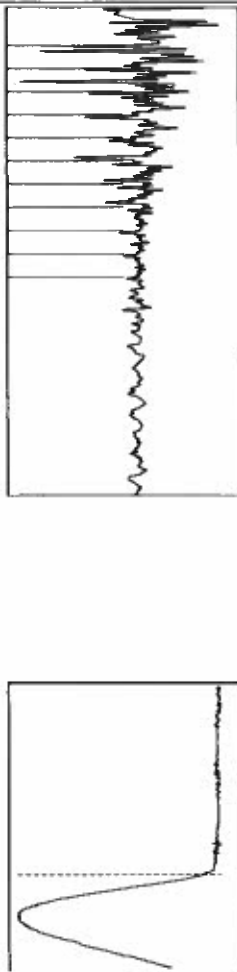
TA'D

Group: MyWells Well: Evans c-1 (acquired on: 08/06/18 10:40:44)



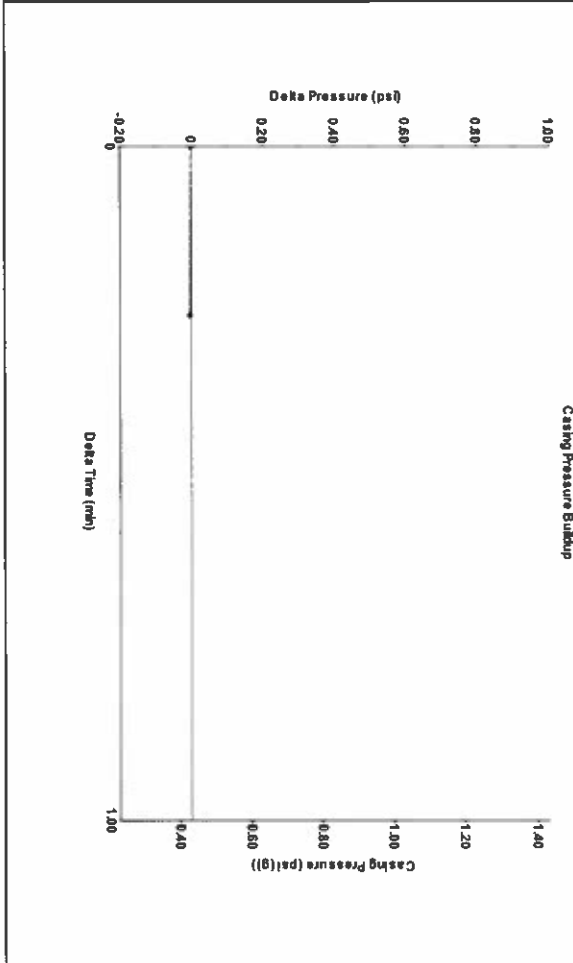
Filter Type High Pass Automatic Collar Count Yes  
 Manual Acoustic Velo 1337.55 ft/s Manual JTS/sec 21.097  
 Time 2.841 sec  
 Joints 63.486 Jts  
 Depth 2012.51 ft

0.5 to 1.5 (Sec) |



Analysis Method: Automatic

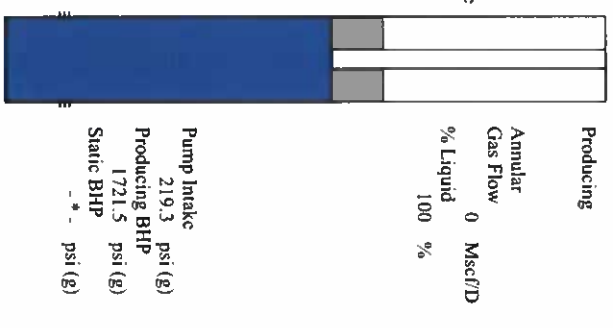
Group: MyWells Well: Evans c-1 (acquired on: 08/06/18 10:40:44)



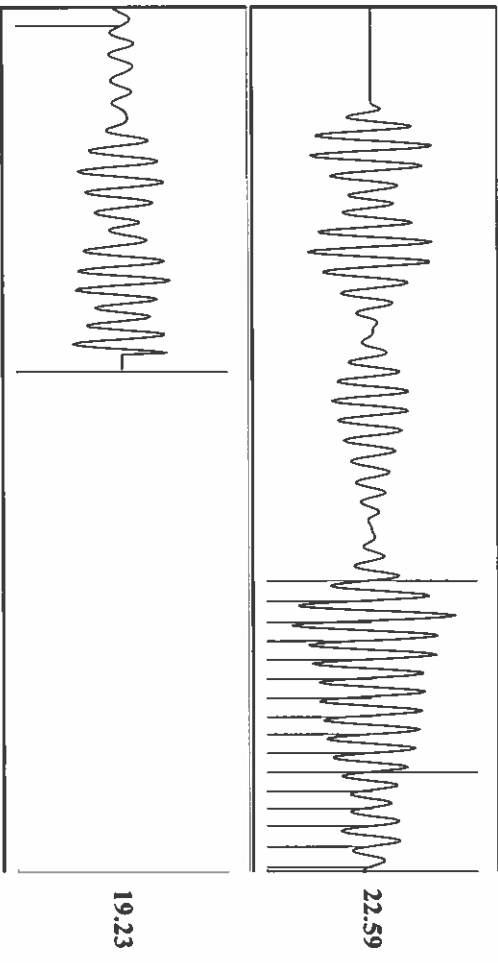
Change in Pressure -0.00 psi PT9424  
 Change in Time 0.25 min Range 0 - 2 psi

Group: MyWells Well: Evans c-1 (acquired on: 08/06/18 10:40:44)

Production	Potential	Casing Pressure	Producing
Current	BB/LD	0.4 psi (g)	Annular
Oil	BB/LD	Casing Pressure Buildup	Gas Flow
Water	BB/LD	-0.0 psi	% Liquid
Gas	Misc/D	0.25 min	Misc/D
IPR Method	Vogel	Gas/Liquid Interface Pressure	
PBHP/SBHP		1.1 psi (g)	
Production Efficiency	0.0	Liquid Level Depth	
		2012.51 ft	
Oil	40 deg API	Pump Intake Depth	
Water	1.05 Sp.Gr:H2O	2646.00 ft	
Gas	0.59 Sp.Gr:AIR	Formation Depth	
		5950.00 ft	
Acoustic Velocity	1416.76 ft/s		

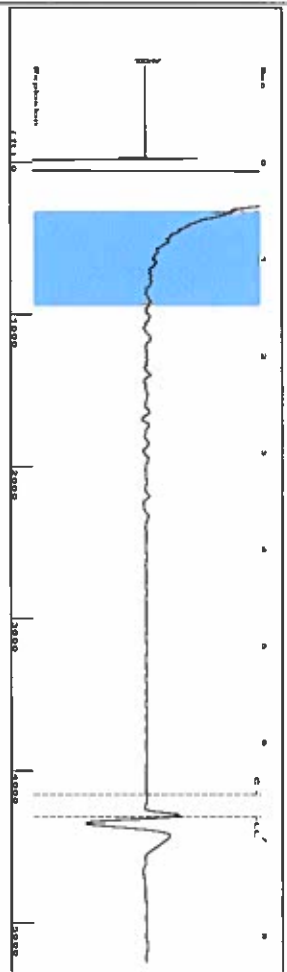


Group: MyWells Well: Evans c-1 (acquired on: 08/06/18 10:40:44)

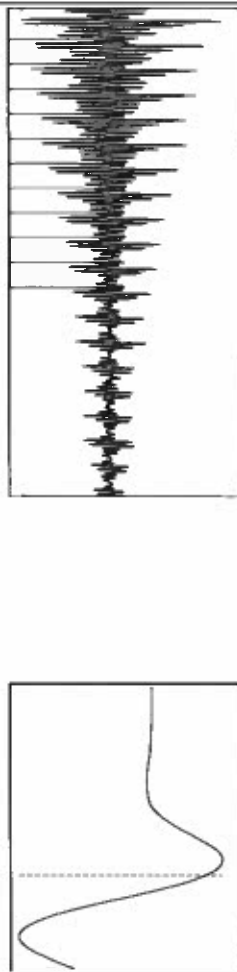


Acoustic Velocity 1416.76 ft/s Joints counted 16  
 Joints Per Second 22.3464 Jts/sec Joints to liquid level 63.486  
 Depth to liquid level 2012.51 ft Filter Width 19.097  
 Automatic Collar Count Yes Time to 1st Collar 1.324 23.097  
 2.04

Group: MyWells Well: Going A-5 (acquired on: 08/06/18 11:15:32)



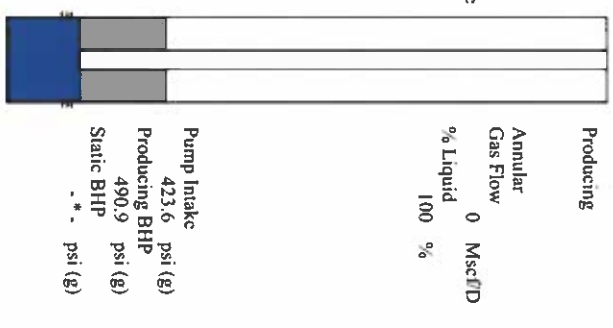
Filter Type High Pass Automatic Collar Count Yes  
 Manual Acoustic Velo 1245.58 ft/s Manual JTS/sec 19.6464  
 Time 6.765 sec  
 Joints 135.644 Jts  
 Depth 4299.93 ft



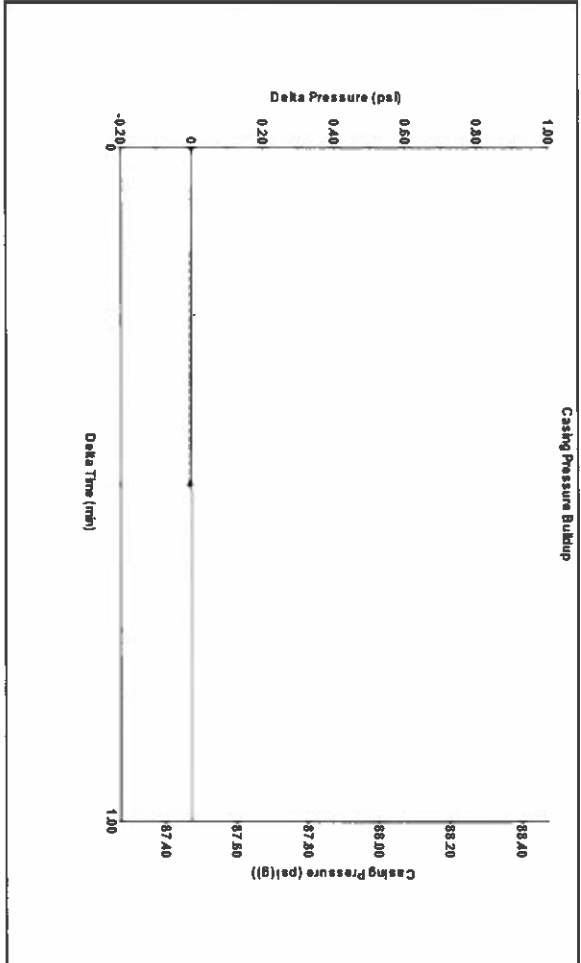
Analysis Method: Automatic

Group: MyWells Well: Going A-5 (acquired on: 08/06/18 11:15:32)

Production	Potential	Casing Pressure	Producing
Oil - * -	BB/LD	87.5 psi (g)	Annular
Water - * -	BB/LD	Casing Pressure Buildup	Gas Flow
Gas - * -	Mscf/D	-0.0 psi	% Liquid
		0.50 min	0 Mscf/D
IPR Method	Vogel	Gas/Liquid Interface Pressure	
PBHP/SBHP	- * -	98.8 psi (g)	
Production Efficiency	0.0	Liquid Level Depth	
		4299.93 ft	
Oil 40 deg API		Pump Intake Depth	
Water 1.05 Sp.Gr.:H2O		5272.00 ft	
Gas 0.72 Sp.Gr.:AIR		Formation Depth	
Acoustic Velocity	1271.23 ft/s	5420.00 ft	

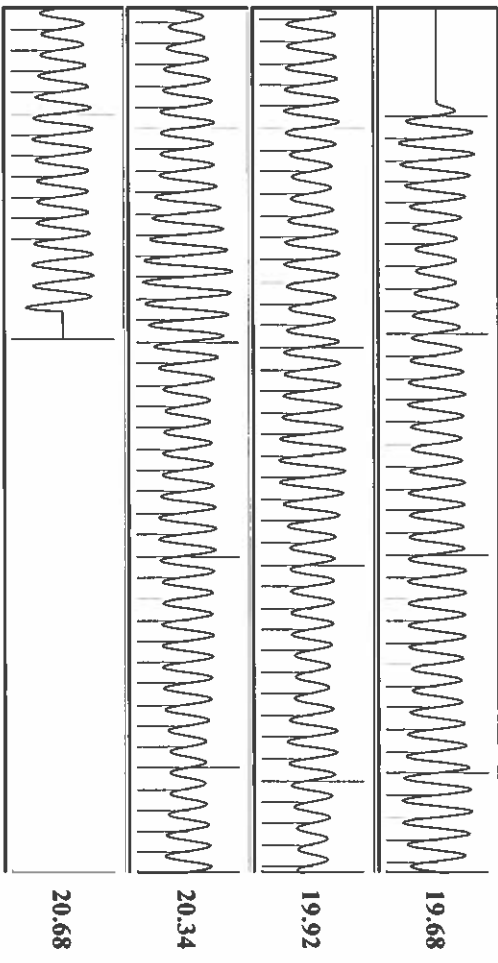


Group: MyWells Well: Going A-5 (acquired on: 08/06/18 11:15:32)



Change in Pressure -0.00 psi PT9424  
 Change in Time 0.50 min Range 0 - 2 psi

Group: MyWells Well: Going A-5 (acquired on: 08/06/18 11:15:32)



Acoustic Velocity 1271.23 ft/s Joints counted 126  
 Joints Per Second 20.0509 Jts/Sec Joints to liquid level 135.644  
 Depth to liquid level 4299.93 ft Filter Width 17.6464  
 Automatic Collar Count Yes Time to 1st Collar 0.248

19.68  
 19.92  
 20.34  
 20.68

77'D

# STATE OF KANSAS

CORPORATION COMMISSION  
CONSERVATION DIVISION  
DISTRICT No. 1  
210 E. FRONTVIEW, SUITE A  
DODGE CITY, KS 67801



PHONE: 620-682-7933  
<http://kcc.ks.gov/>

GOVERNOR JEFF COLYER, M.D.

SHARI FEIST ALBRECHT, CHAIR | JAY SCOTT EMLER, COMMISSIONER | DWIGHT D. KEEN, COMMISSIONER

August 14, 2018

Katherine McClurkan  
Merit Energy Company, LLC  
13727 Noel Road, Suite 1200  
Dallas, TX 75240

Re: Temporary Abandonment  
API 15-129-21483-00-00  
Going A 5  
NW/4 Sec.26-32S-41W  
Morton County, Kansas

Dear Katherine McClurkan:

"Your temporary abandonment (TA) application for the well listed above has been approved. In accordance with K.A.R. 82-3-111 the TA status of this well will expire 08/14/2019.

- \* If you return this well to service or plug it, please notify the District Office.
- \* If you sell this well you are required to file a Transfer of Operator form, T-1.
- \* If the well will remain temporarily abandoned, you must submit a new TA application, CP-111, before 08/14/2019.

You may contact me at the number above if you have questions.

Very truly yours,

Michael Maier"