

KANSAS CORPORATION COMMISSION
OIL & GAS CONSERVATION DIVISION

TEMPORARY ABANDONMENT WELL APPLICATION

OPERATOR: License#
Name:
Address 1:
Address 2:
City: State: Zip:
Contact Person:
Phone:
Contact Person Email:
Field Contact Person:
Field Contact Person Phone:

API No. 15-
Spot Description:
Sec. Twp. S. R.
GPS Location: Lat, Long
Datum: NAD27, NAD83, WGS84
County: Elevation:
Lease Name: Well #:
Well Type: Oil, Gas, OG, WSW, Other
SWD Permit #: ENHR Permit #:
Gas Storage Permit #:
Spud Date: Date Shut-In:

Table with 7 columns: Conductor, Surface, Production, Intermediate, Liner, Tubing. Rows include Size, Setting Depth, Amount of Cement, Top of Cement, Bottom of Cement.

Casing Fluid Level from Surface: How Determined? Date:
Casing Squeeze(s): to w / sacks of cement, to w / sacks of cement. Date:
Do you have a valid Oil & Gas Lease? Yes No
Depth and Type: Junk in Hole at Tools in Hole at Casing Leaks: Yes No Depth of casing leak(s):
Type Completion: ALT. I ALT. II Depth of: DV Tool: w / sacks of cement Port Collar: w / sack of cement
Packer Type: Size: Inch Set at: Feet
Total Depth: Plug Back Depth: Plug Back Method:

Geological Data:

Table with 4 columns: Formation Name, Formation Top, Formation Base, Completion Information. Rows 1 and 2.

UNDER PENALTY OF PERJURY I HEREBY ATTEST THAT THE INFORMATION CONTAINED HEREIN IS TRUE AND CORRECT TO THE BEST OF MY KNOWLEDGE

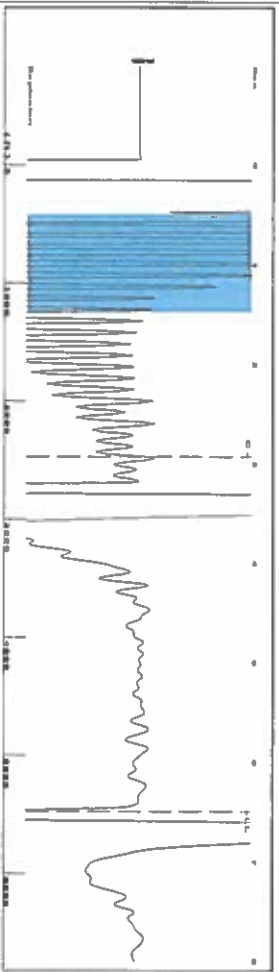
Submitted Electronically

Do NOT Write in This Space - KCC USE ONLY
Date Tested: Results: Date Plugged: Date Repaired: Date Put Back in Service:
Review Completed by: Comments:
TA Approved: Yes Denied Date:

Mail to the Appropriate KCC Conservation Office:

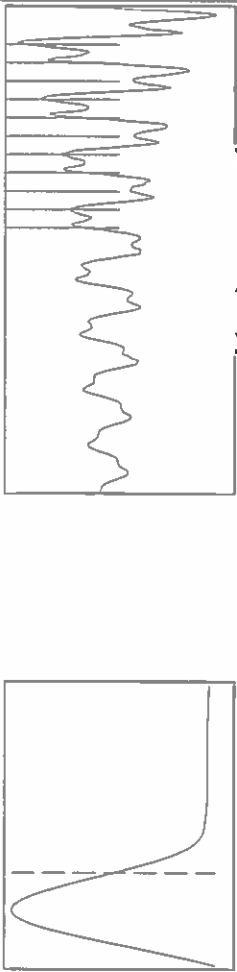
Table with 3 columns: District Office #, Address, Phone. Rows 1-4.

Group: SUBLETTE Well: GREEN H-1 (acquired on: 07/26/18 14:42:13)



Filter Type High Pass Automatic Collar Count Yes
 Manual Acoustic Veloc 681.7 ft/s Manual JTS/sec 26.5252
 Time 6.496 sec Joints 172.611 Jts
 Depth 5471.76 ft

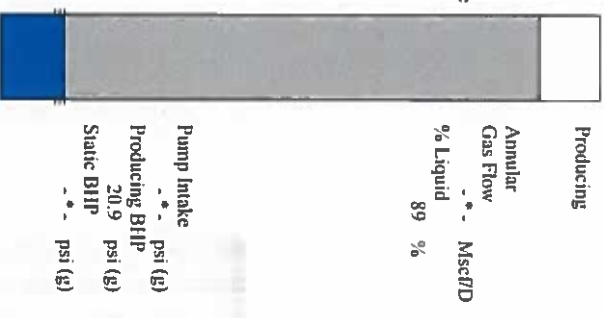
[0.5 to 1.5 (Sec)]



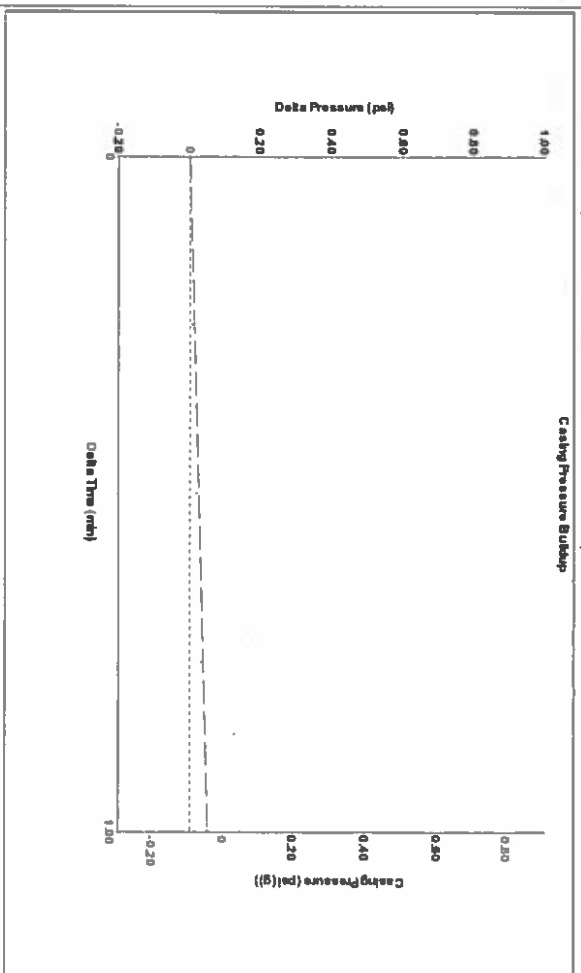
Analysis Method: Automatic

Group: SUBLETTE Well: GREEN H-1 (acquired on: 07/26/18 14:42:13)

Production Current	Potential	Casing Pressure	Producing
Oil -*-	-*- BBL/D	-0.1 psi (g)	Annular -*- Mscf/D
Water -*-	-*- BBL/D	Casing Pressure Buildup 0.1 psi	Gas Flow -*- Mscf/D
Gas -*-	-*- Mscf/D	1.00 min	% Liquid 89 %
IPR Method PBHP/SBHP	Vogel -*-	Gas/Liquid Interface Pressure 1.4 psi (g)	
Production Efficiency 0.0		Liquid Level Depth 5471.76 ft	
Oil 40 deg API		Pump Intake Depth -*- ft	
Water 1.05 Sp.Gr.120		Formation Depth 5520.00 ft	
Gas 0.55 Sp.Gr.AIR			
Acoustic Velocity 1684.66 ft/s			
Formation Submergence			
Total Gaseous Liquid Column HIT (TYVD) 48 ft			
Equivalent Gas Free Liquid HIT (TYVD) 43 ft			
Acoustic Test			

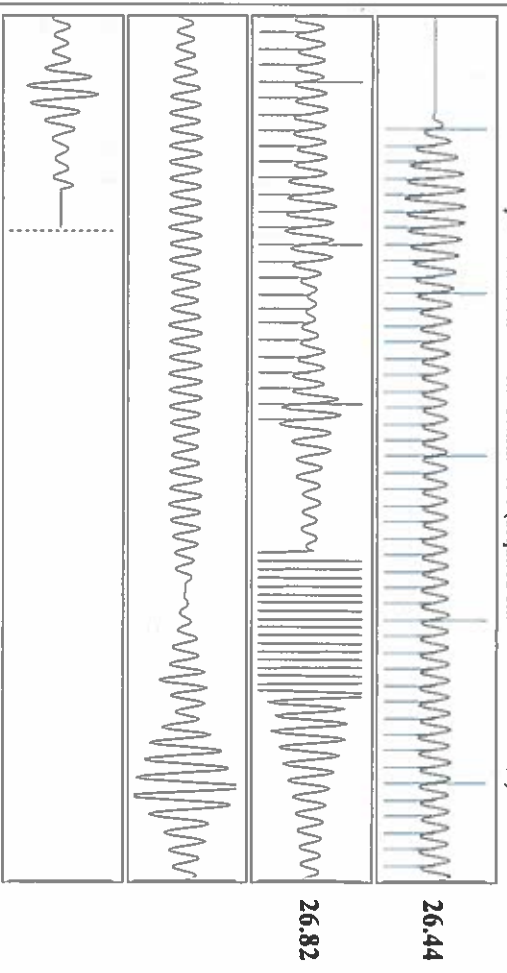


Group: SUBLETTE Well: GREEN H-1 (acquired on: 07/26/18 14:42:13)



Change in Pressure 0.05 psi PT14679
 Change in Time 1.00 min Range 0 - ? psi

Group: SUBLETTE Well: GREEN H-1 (acquired on: 07/26/18 14:42:13)



Acoustic Velocity 1684.66 ft/s Joints counted 71
 Joints Per Second 26.5719 Joints to liquid level 172.611
 Depth to liquid level 5471.76 ft Filter Width 24.5252
 Automatic Collar Count Yes Time to 1st Collar 0.26 2.932

STATE OF KANSAS

CORPORATION COMMISSION
CONSERVATION DIVISION
DISTRICT No. 1
210 E. FRONTVIEW, SUITE A
DODGE CITY, KS 67801



PHONE: 620-682-7933
<http://kcc.ks.gov/>

GOVERNOR JEFF COLYER, M.D.

SHARI FEIST ALBRECHT, CHAIR | JAY SCOTT EMLER, COMMISSIONER | DWIGHT D. KEEN, COMMISSIONER

August 14, 2018

Katherine McClurkan
Merit Energy Company, LLC
13727 Noel Road, Suite 1200
Dallas, TX 75240

Re: Temporary Abandonment
API 15-081-22023-00-01
Green H 1
SW/4 Sec.10-28S-34W
Haskell County, Kansas

Dear Katherine McClurkan:

"Your temporary abandonment (TA) application for the well listed above has been approved. In accordance with K.A.R. 82-3-111 the TA status of this well will expire 08/14/2019.

- * If you return this well to service or plug it, please notify the District Office.
- * If you sell this well you are required to file a Transfer of Operator form, T-1.
- * If the well will remain temporarily abandoned, you must submit a new TA application, CP-111, before 08/14/2019.

You may contact me at the number above if you have questions.

Very truly yours,

Michael Maier"