

KANSAS CORPORATION COMMISSION
OIL & GAS CONSERVATION DIVISION

TEMPORARY ABANDONMENT WELL APPLICATION

OPERATOR: License#
Name:
Address 1:
Address 2:
City: State: Zip:
Contact Person:
Phone:
Contact Person Email:
Field Contact Person:
Field Contact Person Phone:

API No. 15-
Spot Description:
Sec. Twp. S. R.
GPS Location: Lat, Long
Datum: NAD27, NAD83, WGS84
County: Elevation:
Lease Name: Well #:
Well Type: Oil, Gas, OG, WSW, Other
SWD Permit #: ENHR Permit #:
Gas Storage Permit #:
Spud Date: Date Shut-In:

Table with 7 columns: Conductor, Surface, Production, Intermediate, Liner, Tubing. Rows include Size, Setting Depth, Amount of Cement, Top of Cement, Bottom of Cement.

Casing Fluid Level from Surface: How Determined? Date:
Casing Squeeze(s): to w / sacks of cement, to w / sacks of cement. Date:
Do you have a valid Oil & Gas Lease? Yes No
Depth and Type: Junk in Hole at Tools in Hole at Casing Leaks: Yes No Depth of casing leak(s):
Type Completion: ALT. I ALT. II Depth of: DV Tool: w / sacks of cement Port Collar: w / sack of cement
Packer Type: Size: Inch Set at: Feet
Total Depth: Plug Back Depth: Plug Back Method:

Geological Date:

Table with 4 columns: Formation Name, Formation Top, Formation Base, Completion Information. Rows 1 and 2.

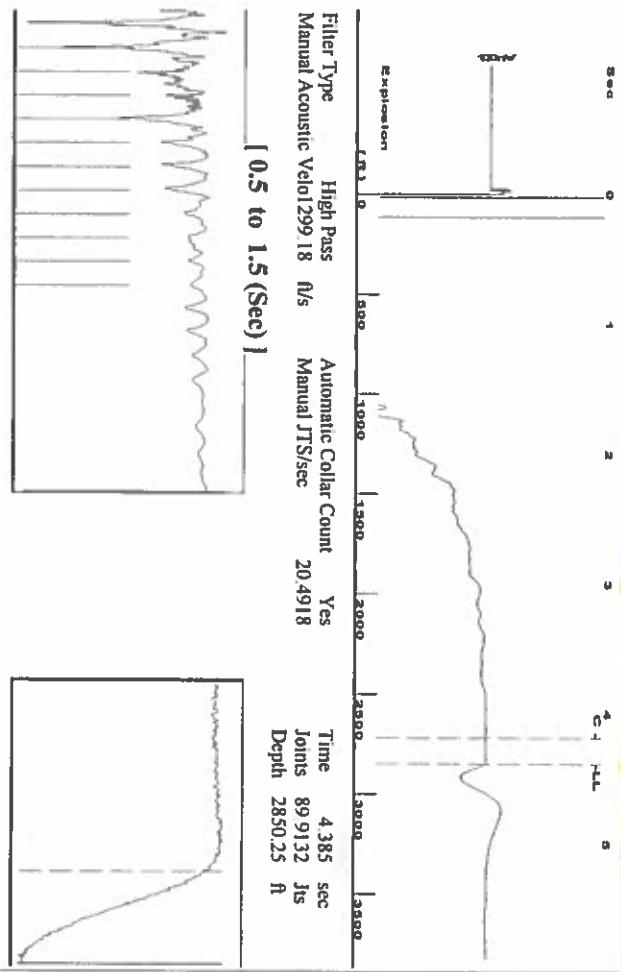
UNDER PENALTY OF PERJURY I HEREBY ATTEST THAT THE INFORMATION CONTAINED HEREIN IS TRUE AND CORRECT TO THE BEST OF MY KNOWLEDGE

Submitted Electronically

Form with fields: Do NOT Write in This Space - KCC USE ONLY, Date Tested, Results, Date Plugged, Date Repaired, Date Put Back in Service, Review Completed by, Comments, TA Approved: Yes Denied, Date.

Mail to the Appropriate KCC Conservation Office:

Table with 2 columns: Office Address, Phone. Rows for District Office #1, #2, #3, #4.

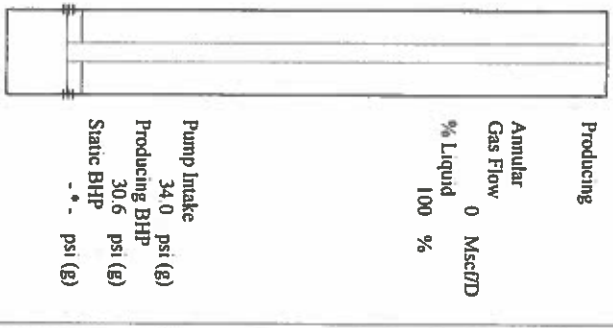


Filter Type High Pass Automatic Collar Count Yes  
 Manual Acoustic Velo 1299 R/s R/s Manual JTS/sec 20.4918  
 Time 4.385 sec  
 Joints 89.9132 J/s  
 Depth 2850.25 ft

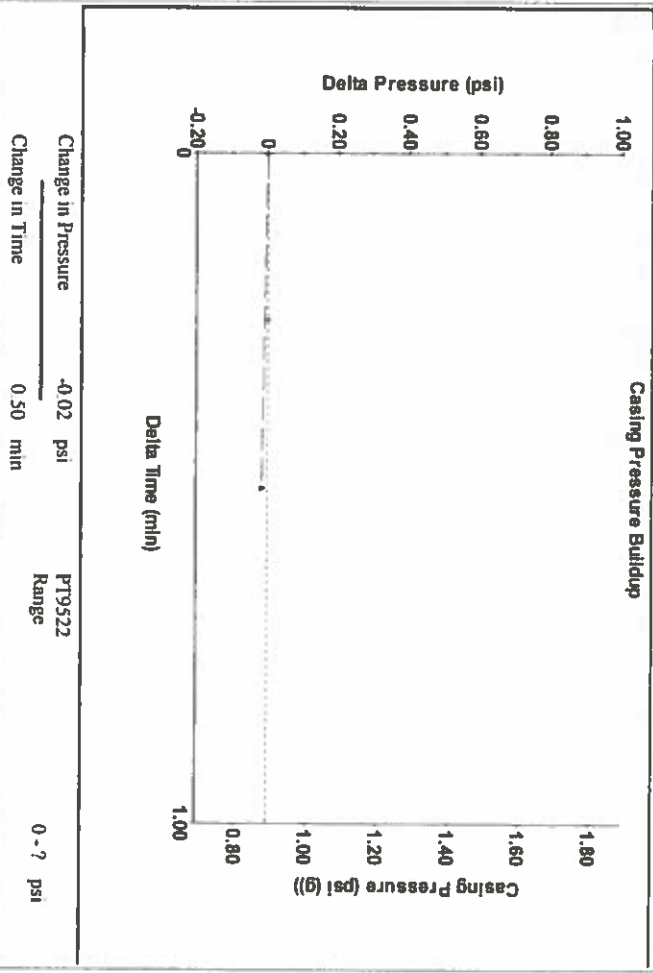
**Analysis Method: Automatic**

Group: Merit Energy Company-Ulysses Well: **Jordan B-2** (acquired on: 08/27/18 14:55:51)

Production	Potential	Casing Pressure	Producing
Current -*- BBL/D	-*- BBL/D	0.9 psi (g)	Annular Gas Flow 0 Mscf/D
Water -*- BBL/D	-*- BBL/D	Casing Pressure Buildup -0.016 psi	% Liquid 100 %
Gas -*- Mscf/D	-*- Mscf/D	0.50 min Gas/Liquid Interface Pressure 2.0 psi (g)	
IPR Method Vogel		Liquid Level Depth 2850.25 ft	
PBHP/SBHP -*-		Pump Intake Depth 2945.00 ft	
Production Efficiency 0.0		Formation Depth 2935.00 ft	
Oil 40 deg API			
Water 1.05 Sp.Gr.H2O			
Gas 0.71 Sp.Gr.AIR			
Acoustic Velocity 1300 R/s			

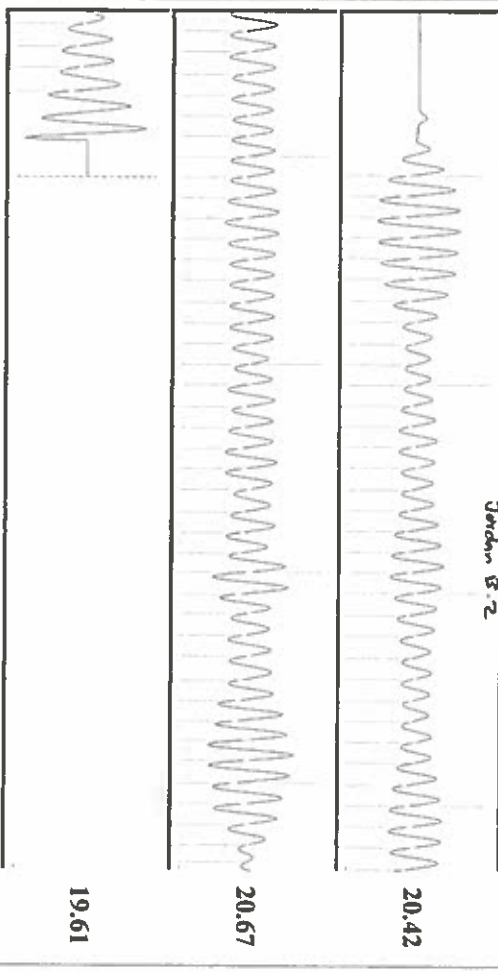


Formation Submergence  
 Total Gaseous Liquid Column HT (TYD) 95 ft  
 Equivalent Gas Free Liquid HT (TYD) 95 ft  
 Acoustic Test  
 Tim Frydendall-Fluid Level Technician



Change in Pressure -0.02 psi PT9522  
 Change in Time 0.50 min Range 0 - ? psi

Group: Merit Energy Company-Ulysses Well: **Jordan B-2** (acquired on: 08/27/18 14:55:51)



Acoustic Velocity 1300 R/s Joints counted 78  
 Joints Per Second 20.5047 J/s/sec Joints to liquid level 89.9132  
 Depth to liquid level 2850.25 ft Filter Width 18.4918  
 Automatic Collar Count Yes Time to 1st Collar 0.38 4.184

# STATE OF KANSAS

CORPORATION COMMISSION  
CONSERVATION DIVISION  
DISTRICT No. 1  
210 E. FRONTVIEW, SUITE A  
DODGE CITY, KS 67801



PHONE: 620-682-7933  
<http://kcc.ks.gov/>

GOVERNOR JEFF COLYER, M.D.

SHARI FEIST ALBRECHT, CHAIR | JAY SCOTT EMLER, COMMISSIONER | DWIGHT D. KEEN, COMMISSIONER

September 05, 2018

Katherine McClurkan  
Merit Energy Company, LLC  
13727 Noel Road, Suite 1200  
Dallas, TX 75240

Re: Temporary Abandonment  
API 15-067-20451-00-00  
Jordan B 2  
SE/4 Sec.04-29S-35W  
Grant County, Kansas

Dear Katherine McClurkan:

"Your temporary abandonment (TA) application for the well listed above has been approved. In accordance with K.A.R. 82-3-111 the TA status of this well will expire 09/05/2019.

- \* If you return this well to service or plug it, please notify the District Office.
- \* If you sell this well you are required to file a Transfer of Operator form, T-1.
- \* If the well will remain temporarily abandoned, you must submit a new TA application, CP-111, before 09/05/2019.

You may contact me at the number above if you have questions.

Very truly yours,

Michael Maier"