

KANSAS CORPORATION COMMISSION  
OIL & GAS CONSERVATION DIVISION

TEMPORARY ABANDONMENT WELL APPLICATION

OPERATOR: License# \_\_\_\_\_  
 Name: \_\_\_\_\_  
 Address 1: \_\_\_\_\_  
 Address 2: \_\_\_\_\_  
 City: \_\_\_\_\_ State: \_\_\_\_\_ Zip: \_\_\_\_\_ + \_\_\_\_\_  
 Contact Person: \_\_\_\_\_  
 Phone:( \_\_\_\_\_ ) \_\_\_\_\_  
 Contact Person Email: \_\_\_\_\_  
 Field Contact Person: \_\_\_\_\_  
 Field Contact Person Phone: ( \_\_\_\_\_ ) \_\_\_\_\_

API No. 15- \_\_\_\_\_  
 Spot Description: \_\_\_\_\_  
 \_\_\_\_\_ - \_\_\_\_\_ - \_\_\_\_\_ - \_\_\_\_\_ Sec. \_\_\_\_\_ Twp. \_\_\_\_\_ S. R. \_\_\_\_\_  E  W  
 \_\_\_\_\_ feet from  N /  S Line of Section  
 \_\_\_\_\_ feet from  E /  W Line of Section  
 GPS Location: Lat: \_\_\_\_\_, Long: \_\_\_\_\_  
(e.g. xx.xxxxx) (e.g. -xxx.xxxxx)  
 Datum:  NAD27  NAD83  WGS84  
 County: \_\_\_\_\_ Elevation: \_\_\_\_\_  GL  KB  
 Lease Name: \_\_\_\_\_ Well #: \_\_\_\_\_  
 Well Type: (check one)  Oil  Gas  OG  WSW  Other: \_\_\_\_\_  
 SWD Permit #: \_\_\_\_\_  ENHR Permit #: \_\_\_\_\_  
 Gas Storage Permit #: \_\_\_\_\_  
 Spud Date: \_\_\_\_\_ Date Shut-In: \_\_\_\_\_

	Conductor	Surface	Production	Intermediate	Liner	Tubing
Size						
Setting Depth						
Amount of Cement						
Top of Cement						
Bottom of Cement						

Casing Fluid Level from Surface: \_\_\_\_\_ How Determined? \_\_\_\_\_ Date: \_\_\_\_\_  
 Casing Squeeze(s): \_\_\_\_\_ to \_\_\_\_\_ w / \_\_\_\_\_ sacks of cement, \_\_\_\_\_ to \_\_\_\_\_ w / \_\_\_\_\_ sacks of cement. Date: \_\_\_\_\_  
(top) (bottom) (top) (bottom)  
 Do you have a valid Oil & Gas Lease?  Yes  No  
 Depth and Type:  Junk in Hole at \_\_\_\_\_  Tools in Hole at \_\_\_\_\_ Casing Leaks:  Yes  No Depth of casing leak(s): \_\_\_\_\_  
(depth) (depth)  
 Type Completion:  ALT. I  ALT. II Depth of:  DV Tool: \_\_\_\_\_ w / \_\_\_\_\_ sacks of cement  Port Collar: \_\_\_\_\_ w / \_\_\_\_\_ sack of cement  
(depth) (depth)  
 Packer Type: \_\_\_\_\_ Size: \_\_\_\_\_ Inch Set at: \_\_\_\_\_ Feet  
 Total Depth: \_\_\_\_\_ Plug Back Depth: \_\_\_\_\_ Plug Back Method: \_\_\_\_\_

**Geological Data:**

Formation Name	Formation Top	Formation Base	Completion Information
1. _____	At: _____	to _____ Feet	Perforation Interval _____ to _____ Feet or Open Hole Interval _____ to _____ Feet
2. _____	At: _____	to _____ Feet	Perforation Interval _____ to _____ Feet or Open Hole Interval _____ to _____ Feet

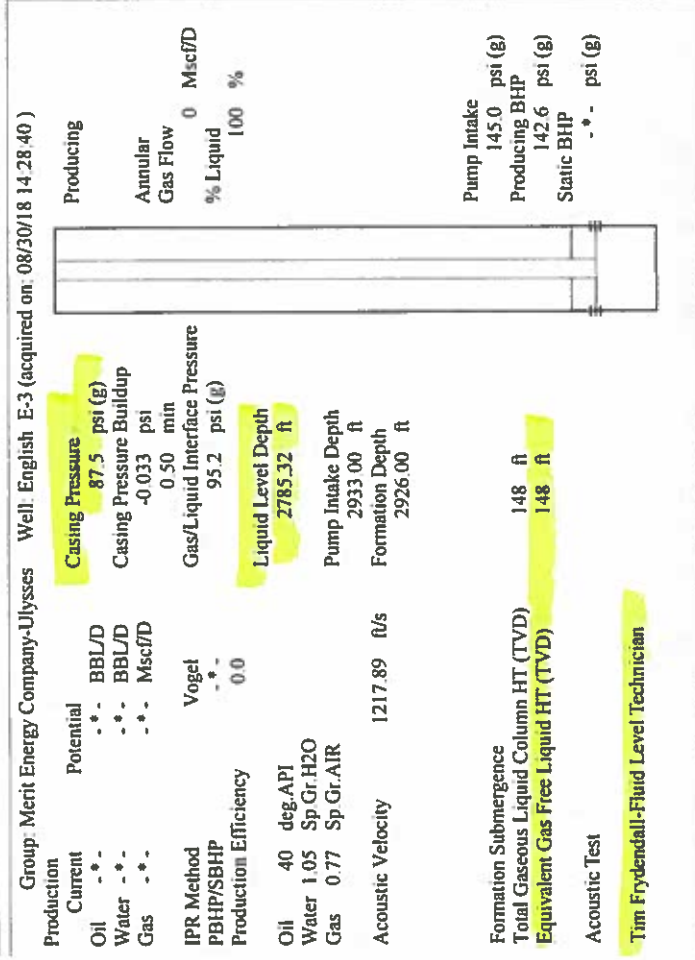
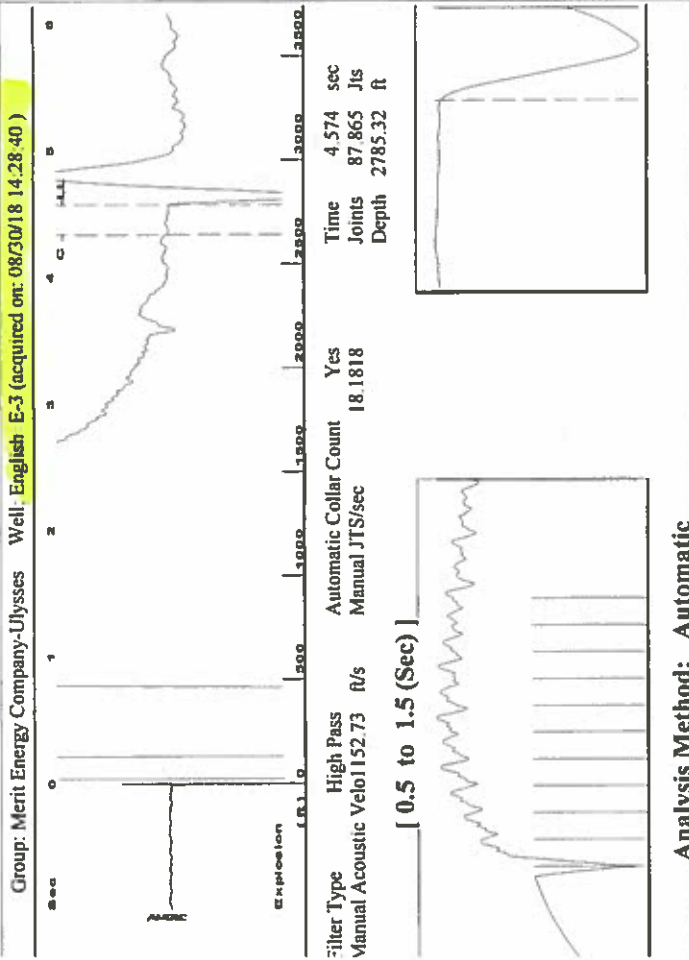
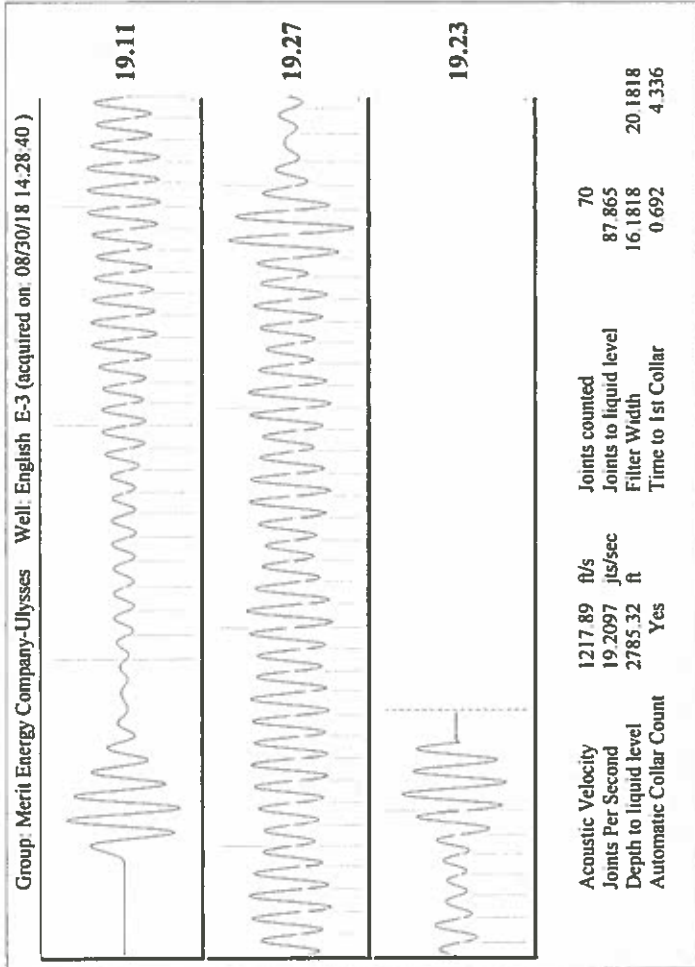
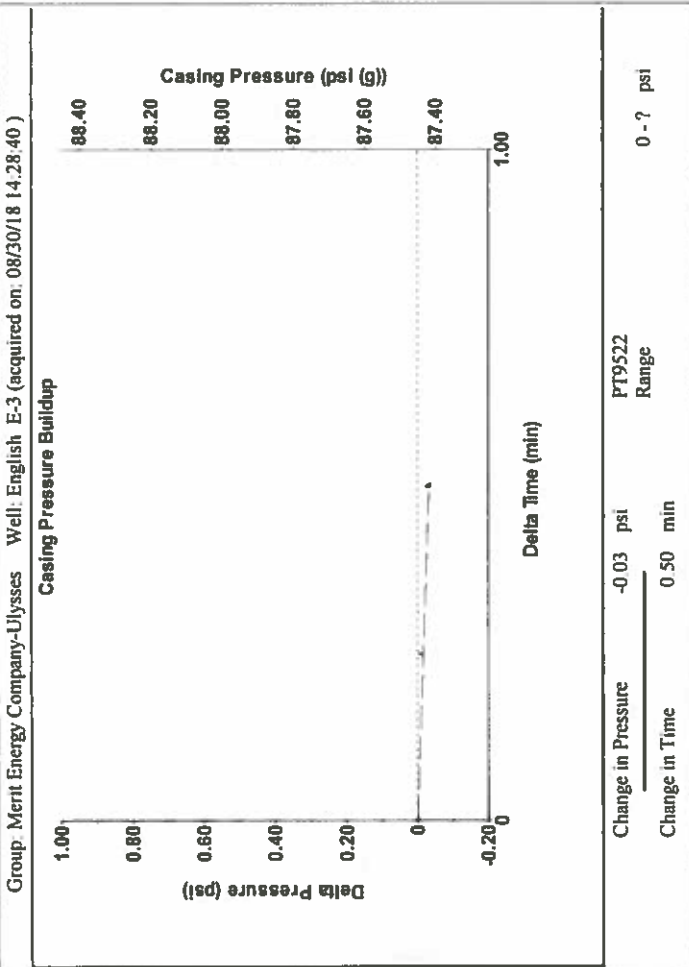
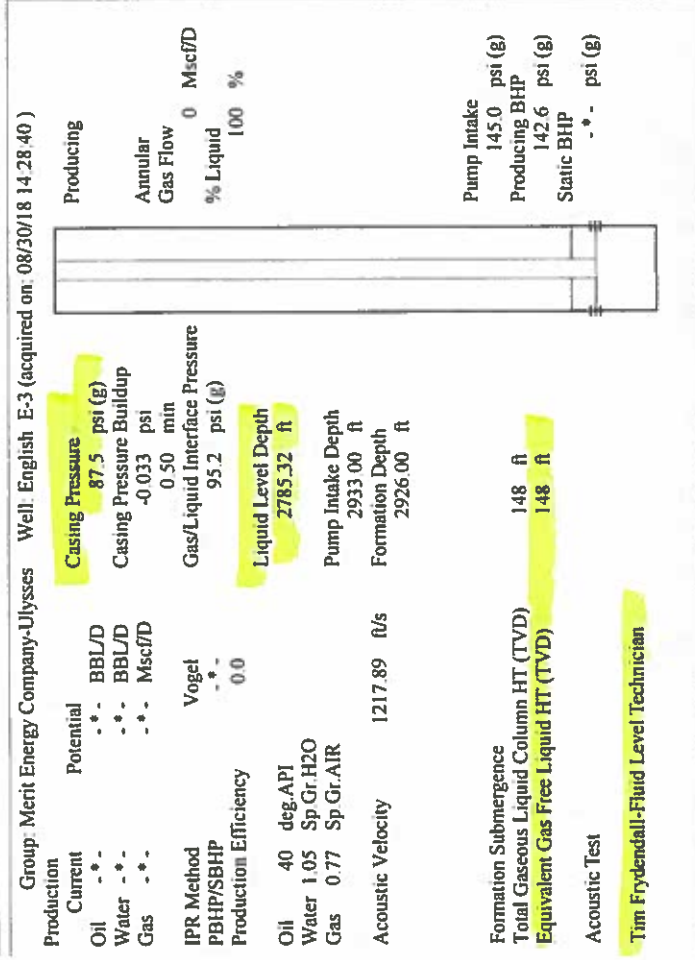
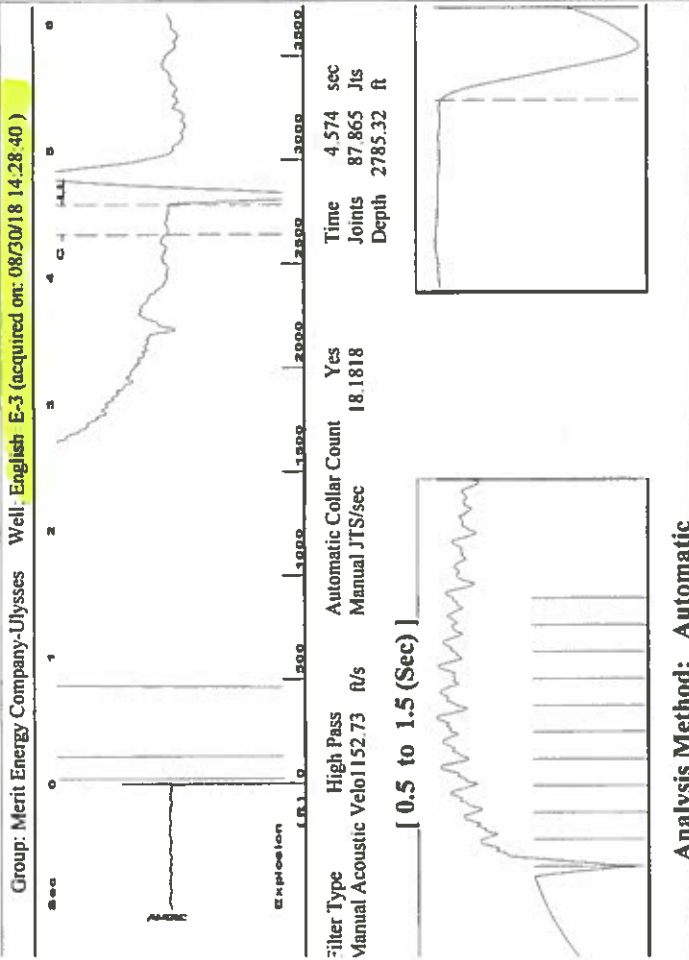
UNDER PENALTY OF PERJURY I HEREBY ATTEST THAT THE INFORMATION CONTAINED HEREIN IS TRUE AND CORRECT TO THE BEST OF MY KNOWLEDGE

Submitted Electronically

<b>Do NOT Write in This Space - KCC USE ONLY</b>	Date Tested: _____	Results: _____	Date Plugged: _____	Date Repaired: _____	Date Put Back in Service: _____
	Review Completed by: _____ Comments: _____				
TA Approved: <input type="checkbox"/> Yes <input type="checkbox"/> Denied Date: _____					

Mail to the Appropriate KCC Conservation Office:

	KCC District Office #1 - 210 E. Frontview, Suite A, Dodge City, KS 67801	Phone 620.682.7933
	KCC District Office #2 - 3450 N. Rock Road, Building 600, Suite 601, Wichita, KS 67226	Phone 316.337.7400
	KCC District Office #3 - 137 E. 21st St., Chanute, KS 66720	Phone 620.902.6450
	KCC District Office #4 - 2301 E. 13th Street, Hays, KS 67601-2651	Phone 785.261.6250



Filter Type: High Pass  
Manual Acoustic Velo: 152.73 ft/s  
Automatic Collar Count: Yes  
Manual JTS/sec: 18,1818  
Time: 4.574 sec  
Joints: 87,865 Jts  
Depth: 2785.32 ft

[ 0.5 to 1.5 (Sec) ]

**Analysis Method: Automatic**

Group: Merit Energy Company-Ulysses Well: English E-3 (acquired on: 08/30/18 14:28:40)

Production	Current	Potential	Casing Pressure	Producing
Oil	-*-	BBL/D	87.5 psi (g)	Annular
Water	-*-	BBL/D	-0.033 psi	Gas Flow
Gas	-*-	Mscf/D	0.50 min	% Liquid
IPR Method	Vogel	Gas/Liquid Interface Pressure	95.2 psi (g)	100 %
PBHP/SBHP	-*-	Liquid Level Depth	2785.32 ft	Pump Intake
Production Efficiency	0.0	Pump Intake Depth	2933.00 ft	145.0 psi (g)
Oil	40 deg API	Formation Depth	2926.00 ft	Producing BHP
Water	1.05 Sp.Gr.H2O	Acoustic Velocity	1217.89 ft/s	142.6 psi (g)
Gas	0.77 Sp.Gr.AIR	Formation Submergence		Static BHP
		Total Gaseous Liquid Column HT (TVD)	148 ft	-*- psi (g)
		Equivalent Gas Free Liquid HT (TVD)	148 ft	

Acoustic Test

Tim Frydendall-Fluid Level Technician

Acoustic Velocity: 1217.89 ft/s  
Joints Per Second: 19,2097  
Depth to liquid level: 2785.32 ft  
Automatic Collar Count: Yes

Acoustic Velocity: 1217.89 ft/s  
Joints Per Second: 19,2097  
Depth to liquid level: 2785.32 ft  
Automatic Collar Count: Yes

Acoustic Velocity: 1217.89 ft/s  
Joints Per Second: 19,2097  
Depth to liquid level: 2785.32 ft  
Automatic Collar Count: Yes

Acoustic Velocity: 1217.89 ft/s  
Joints Per Second: 19,2097  
Depth to liquid level: 2785.32 ft  
Automatic Collar Count: Yes

Acoustic Velocity: 1217.89 ft/s  
Joints Per Second: 19,2097  
Depth to liquid level: 2785.32 ft  
Automatic Collar Count: Yes

Acoustic Velocity: 1217.89 ft/s  
Joints Per Second: 19,2097  
Depth to liquid level: 2785.32 ft  
Automatic Collar Count: Yes

Acoustic Velocity: 1217.89 ft/s  
Joints Per Second: 19,2097  
Depth to liquid level: 2785.32 ft  
Automatic Collar Count: Yes

Acoustic Velocity: 1217.89 ft/s  
Joints Per Second: 19,2097  
Depth to liquid level: 2785.32 ft  
Automatic Collar Count: Yes

# STATE OF KANSAS

CORPORATION COMMISSION  
CONSERVATION DIVISION  
DISTRICT No. 1  
210 E. FRONTVIEW, SUITE A  
DODGE CITY, KS 67801



PHONE: 620-682-7933  
<http://kcc.ks.gov/>

GOVERNOR JEFF COLYER, M.D.

SHARI FEIST ALBRECHT, CHAIR | JAY SCOTT EMLER, COMMISSIONER | DWIGHT D. KEEN, COMMISSIONER

September 05, 2018

Katherine McClurkan  
Merit Energy Company, LLC  
13727 Noel Road, Suite 1200  
Dallas, TX 75240

Re: Temporary Abandonment  
API 15-067-20525-00-00  
English E 3  
SE/4 Sec.02-29S-36W  
Grant County, Kansas

Dear Katherine McClurkan:

"Your temporary abandonment (TA) application for the well listed above has been approved. In accordance with K.A.R. 82-3-111 the TA status of this well will expire 09/05/2019.

- \* If you return this well to service or plug it, please notify the District Office.
- \* If you sell this well you are required to file a Transfer of Operator form, T-1.
- \* If the well will remain temporarily abandoned, you must submit a new TA application, CP-111, before 09/05/2019.

You may contact me at the number above if you have questions.

Very truly yours,

Michael Maier"