

KANSAS CORPORATION COMMISSION
OIL & GAS CONSERVATION DIVISION

TEMPORARY ABANDONMENT WELL APPLICATION

All blanks must be complete

OPERATOR: License# _____
Name: _____
Address 1: _____
Address 2: _____
City: _____ State: _____ Zip: _____ + _____
Contact Person: _____
Phone: (_____) _____
Contact Person Email: _____
Field Contact Person: _____
Field Contact Person Phone: (_____) _____

API No. 15- _____
Spot Description: _____
____ - ____ - ____ - ____ Sec. _____ Twp. _____ S. R. _____ E W
_____ feet from N / S Line of Section
_____ feet from E / W Line of Section
GPS Location: Lat: _____, Long: _____
(e.g. xx.xxxxx) (e.g. -xxx.xxxxx)
Datum: NAD27 NAD83 WGS84
County: _____ Elevation: _____ GL KB
Lease Name: _____ Well #: _____
Well Type: (check one) Oil Gas OG WSW Other: _____
 SWD Permit #: _____ ENHR Permit #: _____
 Gas Storage Permit #: _____
Spud Date: _____ Date Shut-In: _____

	Conductor	Surface	Production	Intermediate	Liner	Tubing
Size						
Setting Depth						
Amount of Cement						
Top of Cement						
Bottom of Cement						

Casing Fluid Level from Surface: _____ How Determined? _____ Date: _____
Casing Squeeze(s): _____ to _____ w / _____ sacks of cement, _____ to _____ w / _____ sacks of cement. Date: _____
(top) (bottom) (top) (bottom)
Do you have a valid Oil & Gas Lease? Yes No
Depth and Type: Junk in Hole at _____ Tools in Hole at _____ Casing Leaks: Yes No Depth of casing leak(s): _____
(depth) (depth)
Type Completion: ALT. I ALT. II Depth of: DV Tool: _____ w / _____ sacks of cement Port Collar: _____ w / _____ sack of cement
(depth) (depth)
Packer Type: _____ Size: _____ Inch Set at: _____ Feet
Total Depth: _____ Plug Back Depth: _____ Plug Back Method: _____

Geological Data:

Formation Name	Formation Top	Formation Base	Completion Information
1. _____	At: _____	to _____ Feet	Perforation Interval _____ to _____ Feet or Open Hole Interval _____ to _____ Feet
2. _____	At: _____	to _____ Feet	Perforation Interval _____ to _____ Feet or Open Hole Interval _____ to _____ Feet

UNDER PENALTY OF PERJURY I HEREBY ATTEST THAT THE INFORMATION CONTAINED HEREIN IS TRUE AND CORRECT TO THE BEST OF MY KNOWLEDGE

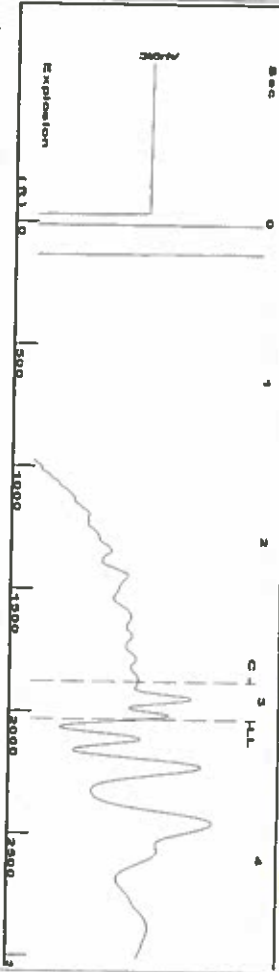
Submitted Electronically

Do NOT Write in This Space - KCC USE ONLY	Date Tested: _____	Results: _____	Date Plugged: _____	Date Repaired: _____	Date Put Back in Service: _____
	Review Completed by: _____ Comments: _____				
TA Approved: <input type="checkbox"/> Yes <input type="checkbox"/> Denied Date: _____					

Mail to the Appropriate KCC Conservation Office:

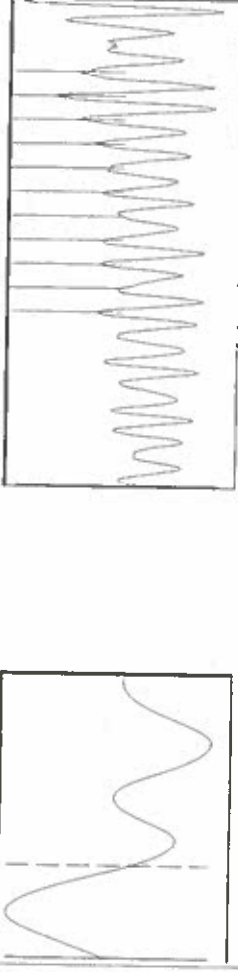
	KCC District Office #1 - 210 E. Frontview, Suite A, Dodge City, KS 67801	Phone 620.682.7933
	KCC District Office #2 - 3450 N. Rock Road, Building 600, Suite 601, Wichita, KS 67226	Phone 316.337.7400
	KCC District Office #3 - 137 E. 21st St., Chanute, KS 66720	Phone 620.902.6450
	KCC District Office #4 - 2301 E. 13th Street, Hays, KS 67601-2651	Phone 785.261.6250

Group: Merit Energy Company-Ulysses Well: Miller X-2 (acquired on: 08/31/18 13:19:49)



Filter Type High Pass Automatic Collar Count Yes
 Manual Acoustic Veloc 1283.4 ft/s Manual JTS/sec 20.2429
 Time 3.124 sec
 Joints 64.0942 Jts
 Depth 2031.79 ft

0.5 to 1.5 (Sec)



Analysis Method: Automatic

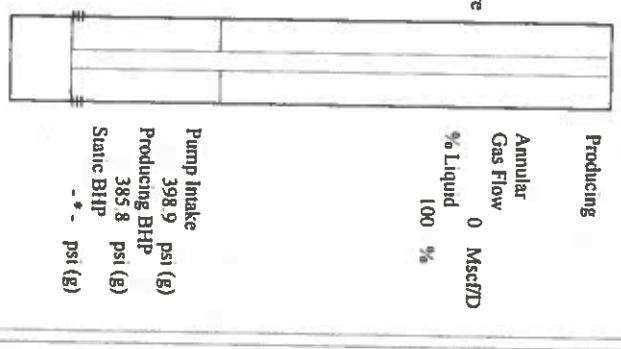
Group: Merit Energy Company-Ulysses Well: Miller X-2 (acquired on: 08/31/18 13:19:49)

Production Current	Potential	Casting Pressure	Producing
Oil -*-	-*- BBL/D	86.1 psi (g)	Annular
Water -*-	-*- BBL/D	Casting Pressure Buildup	Gas Flow
Gas -*-	-*- Mscf/D	-0.026 psi	0 Mscf/D
IPR Method	Vogel	Gas/Liquid Interface Pressure	% Liquid
PBHP/SBHP	-*-	91.1 psi (g)	100 %
Production Efficiency	0.0	Liquid Level Depth	
		2031.79 ft	
Oil 40 deg API		Pump Intake Depth	
Water 1.05 Sp.Gr.H2O		2952.00 ft	
Gas 0.69 Sp.Gr.AIR		Formation Depth	
		2912.00 ft	
Acoustic Velocity	1300.76 ft/s		

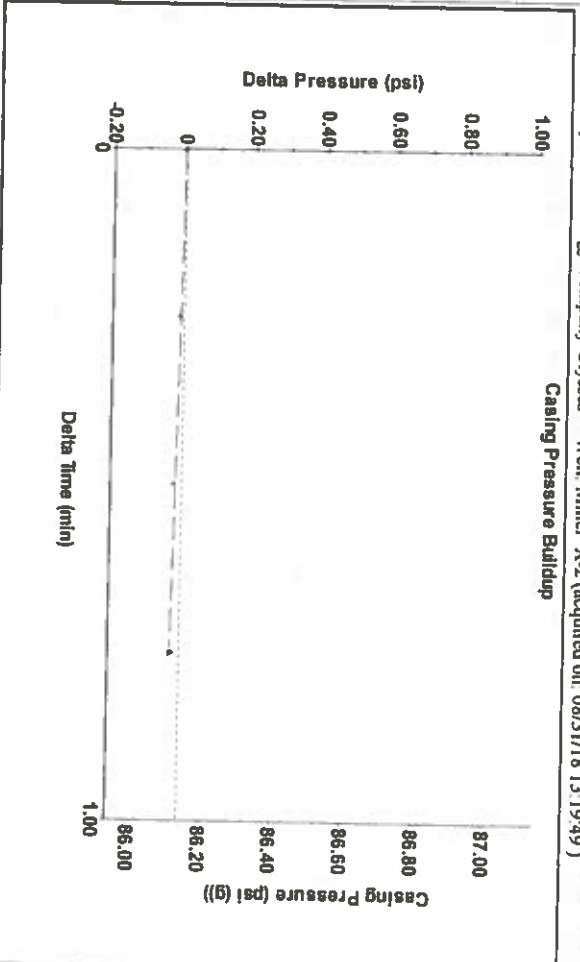
Formation Submergence 920 ft
 Total Gaseous Liquid Column HT (TVD) 920 ft
 Equivalent Gas Free Liquid HT (TVDF) 920 ft

Acoustic Test

Tim Frydendahl-Fluid Level Technician



Group: Merit Energy Company-Ulysses Well: Miller X-2 (acquired on: 08/31/18 13:19:49)



Change in Pressure -0.03 psi
 Change in Time 0.75 min
 PT9522 Range
 0 - ? psi

Group: Merit Energy Company-Ulysses Well: Miller X-2 (acquired on: 08/31/18 13:19:49)



Acoustic Velocity 1300.76 ft/s
 Joints Per Second 20.5167 Jts/sec
 Depth to Liquid Level 2031.79 ft
 Automatic Collar Count Yes

Joints counted 54
 Joints to liquid level 64.0942
 Filter Width 18.2429
 Time to 1st Collar 0.256

20.65

20.44

STATE OF KANSAS

CORPORATION COMMISSION
CONSERVATION DIVISION
DISTRICT No. 1
210 E. FRONTVIEW, SUITE A
DODGE CITY, KS 67801



PHONE: 620-682-7933
<http://kcc.ks.gov/>

GOVERNOR JEFF COLYER, M.D.

SHARI FEIST ALBRECHT, CHAIR | JAY SCOTT EMLER, COMMISSIONER | DWIGHT D. KEEN, COMMISSIONER

September 05, 2018

Katherine McClurkan
Merit Energy Company, LLC
13727 Noel Raod, Suite 1200
Dallas, TX 75240

Re: Temporary Abandonment
API 15-067-30004-00-00
Miller X 2
NW/4 Sec.22-27S-36W
Grant County, Kansas

Dear Katherine McClurkan:

"Your temporary abandonment (TA) application for the well listed above has been approved. In accordance with K.A.R. 82-3-111 the TA status of this well will expire 09/05/2019.

- * If you return this well to service or plug it, please notify the District Office.
- * If you sell this well you are required to file a Transfer of Operator form, T-1.
- * If the well will remain temporarily abandoned, you must submit a new TA application, CP-111, before 09/05/2019.

You may contact me at the number above if you have questions.

Very truly yours,

Michael Maier"