

KANSAS CORPORATION COMMISSION
OIL & GAS CONSERVATION DIVISION

TEMPORARY ABANDONMENT WELL APPLICATION

OPERATOR: License#
Name:
Address 1:
Address 2:
City: State: Zip:
Contact Person:
Phone:
Contact Person Email:
Field Contact Person:
Field Contact Person Phone:

API No. 15-
Spot Description:
Sec. Twp. S. R.
GPS Location: Lat, Long
Datum: NAD27, NAD83, WGS84
County: Elevation:
Lease Name: Well #:
Well Type: Oil, Gas, OG, WSW, Other
SWD Permit #: ENHR Permit #:
Gas Storage Permit #:
Spud Date: Date Shut-In:

Table with 7 columns: Conductor, Surface, Production, Intermediate, Liner, Tubing. Rows include Size, Setting Depth, Amount of Cement, Top of Cement, Bottom of Cement.

Casing Fluid Level from Surface: How Determined? Date:
Casing Squeeze(s): to w / sacks of cement, to w / sacks of cement. Date:
Do you have a valid Oil & Gas Lease? Yes No
Depth and Type: Junk in Hole at Tools in Hole at Casing Leaks: Yes No Depth of casing leak(s):
Type Completion: ALT. I ALT. II Depth of: DV Tool: w / sacks of cement Port Collar: w / sack of cement
Packer Type: Size: Inch Set at: Feet
Total Depth: Plug Back Depth: Plug Back Method:

Geological Data:

Table with 4 columns: Formation Name, Formation Top, Formation Base, Completion Information. Rows 1 and 2.

UNDER PENALTY OF PERJURY I HEREBY ATTEST THAT THE INFORMATION CONTAINED HEREIN IS TRUE AND CORRECT TO THE BEST OF MY KNOWLEDGE

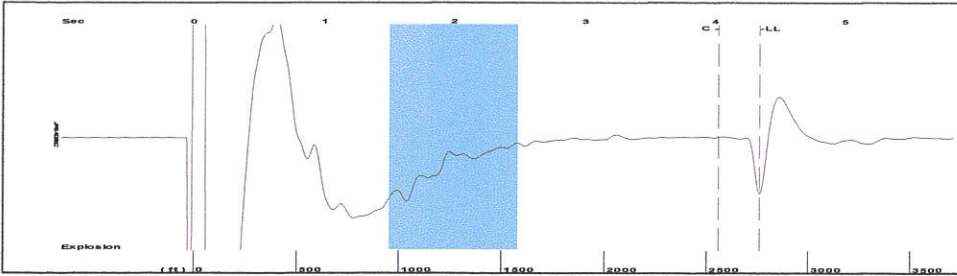
Submitted Electronically

Do NOT Write in This Space - KCC USE ONLY
Date Tested: Results: Date Plugged: Date Repaired: Date Put Back in Service:
Review Completed by: Comments:
TA Approved: Yes Denied Date:

Mail to the Appropriate KCC Conservation Office:

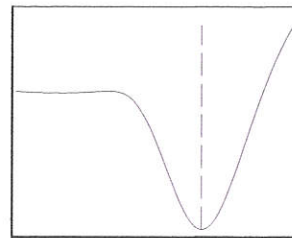
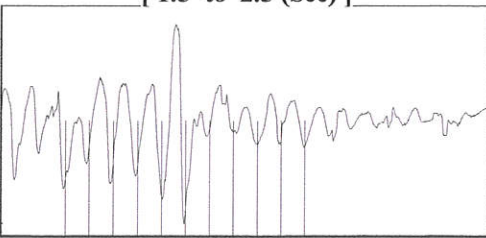
Map of Kansas with 4 numbered districts. Table with 2 columns: Office Name/Address, Phone Number.

Group: TA'D WELLS Well: CARPENTER 9 (acquired on: 09/04/18 10:30:13)



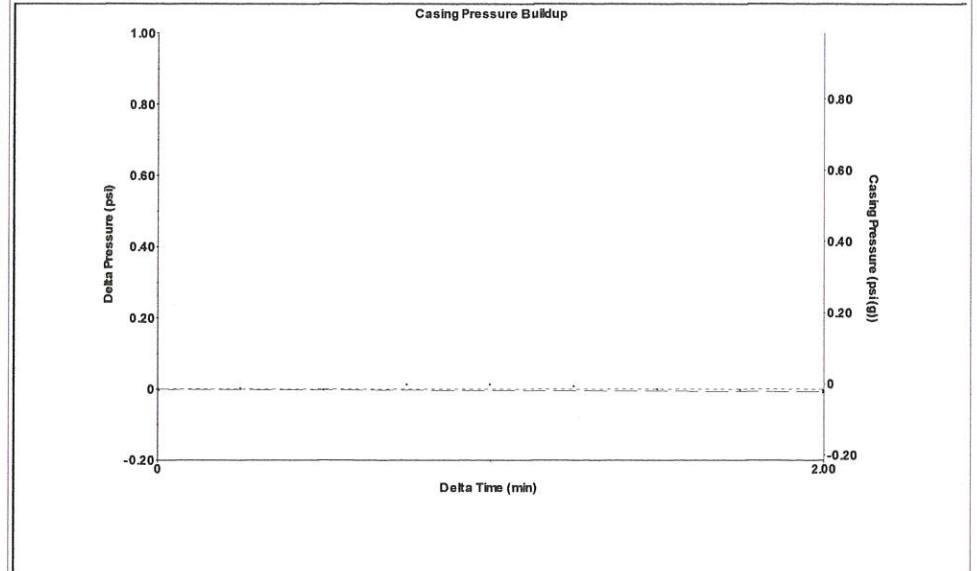
Filter Type High Pass Automatic Collar Count Yes Time 4.34 sec
 Manual Acoustic Velo 1299.18 ft/s Manual JTS/sec 20.4918 Joints 87.0321 Jts
 Depth 2758.92 ft

[1.5 to 2.5 (Sec)]



Analysis Method: Automatic

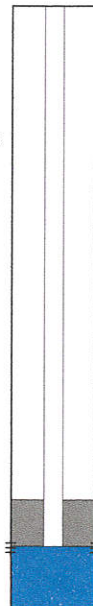
Group: TA'D WELLS Well: CARPENTER 9 (acquired on: 09/04/18 10:30:13)



Change in Pressure -0.01 psi PT11249
 Change in Time 2.00 min Range 0 - ? psi

Group: TA'D WELLS Well: CARPENTER 9 (acquired on: 09/04/18 10:30:13)

Production	Potential	Casing Pressure
Oil - * -	- * - BBL/D	-0.0 psi (g)
Water - * -	- * - BBL/D	Casing Pressure Buildup
Gas - * -	- * - Mscf/D	-0.0 psi
		2.00 min
IPR Method	Vogel	Gas/Liquid Interface Pressure
PBHP/SBHP	- * -	1.0 psi (g)
Production Efficiency	0.0	
Oil 40 deg.API		Liquid Level Depth
Water 1.05 Sp.Gr.H2O		2758.92 ft
Gas 0.73 Sp.Gr.AIR		Pump Intake Depth
		3056.00 ft
Acoustic Velocity	1271.39 ft/s	Formation Depth
		3062.00 ft



Producing

Annular Gas Flow 0 Mscf/D

% Liquid 100 %

Pump Intake 101.7 psi (g)

Producing BHP 104.4 psi (g)

Static BHP - * - psi (g)

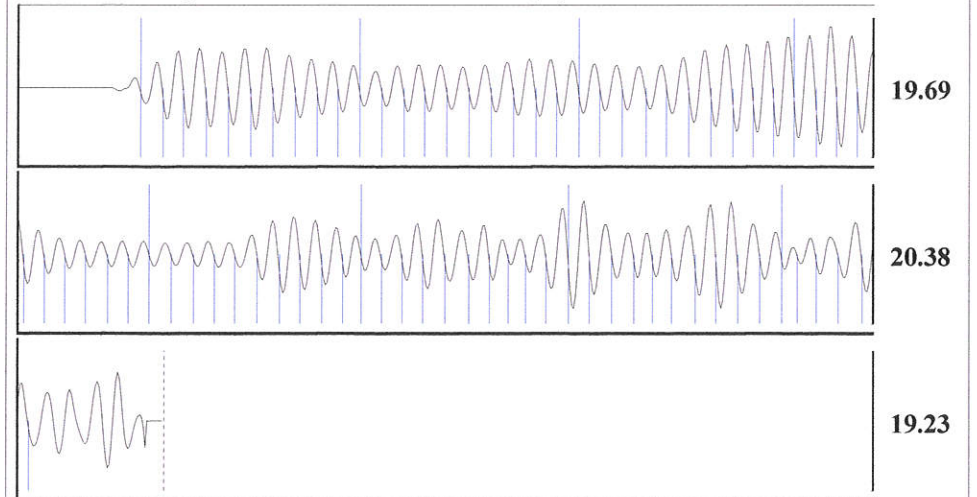
Formation Submergence

Total Gaseous Liquid Column HT (TVD) 297 ft

Equivalent Gas Free Liquid HT (TVD) 297 ft

Acoustic Test

Group: TA'D WELLS Well: CARPENTER 9 (acquired on: 09/04/18 10:30:13)



Acoustic Velocity	1271.39 ft/s	Joints counted	75
Joints Per Second	20.0535 jts/sec	Joints to liquid level	87.0321
Depth to liquid level	2758.92 ft	Filter Width	18.4918 22.4918
Automatic Collar Count	Yes	Time to 1st Collar	0.284 4.024

STATE OF KANSAS

CORPORATION COMMISSION
CONSERVATION DIVISION
DISTRICT No. 1
210 E. FRONTVIEW, SUITE A
DODGE CITY, KS 67801



PHONE: 620-682-7933
<http://kcc.ks.gov/>

GOVERNOR JEFF COLYER, M.D.

SHARI FEIST ALBRECHT, CHAIR | JAY SCOTT EMLER, COMMISSIONER | DWIGHT D. KEEN, COMMISSIONER

September 05, 2018

Katherine McClurkan
Merit Energy Company, LLC
13727 Noel Road, Suite 1200
Dallas, TX 75240

Re: Temporary Abandonment
API 15-189-20417-00-00
Carpenter 9
NW/4 Sec.28-33S-36W
Stevens County, Kansas

Dear Katherine McClurkan:

"Your temporary abandonment (TA) application for the well listed above has been approved. In accordance with K.A.R. 82-3-111 the TA status of this well will expire 09/05/2019.

- * If you return this well to service or plug it, please notify the District Office.
- * If you sell this well you are required to file a Transfer of Operator form, T-1.
- * If the well will remain temporarily abandoned, you must submit a new TA application, CP-111, before 09/05/2019.

You may contact me at the number above if you have questions.

Very truly yours,

Michael Maier"