

KANSAS CORPORATION COMMISSION
OIL & GAS CONSERVATION DIVISION

TEMPORARY ABANDONMENT WELL APPLICATION

OPERATOR: License#
Name:
Address 1:
Address 2:
City: State: Zip:
Contact Person:
Phone:
Contact Person Email:
Field Contact Person:
Field Contact Person Phone:

API No. 15-
Spot Description:
Sec. Twp. S. R.
GPS Location: Lat: Long:
Datum: NAD27 NAD83 WGS84
County: Elevation:
Lease Name: Well #:
Well Type: Oil Gas OG WSW Other:
SWD Permit #: ENHR Permit #:
Gas Storage Permit #:
Spud Date: Date Shut-In:

Table with 7 columns: Conductor, Surface, Production, Intermediate, Liner, Tubing. Rows include Size, Setting Depth, Amount of Cement, Top of Cement, Bottom of Cement.

Casing Fluid Level from Surface: How Determined? Date:
Casing Squeeze(s): to w / sacks of cement, to w / sacks of cement. Date:
Do you have a valid Oil & Gas Lease? Yes No
Depth and Type: Junk in Hole at Tools in Hole at Casing Leaks: Yes No Depth of casing leak(s):
Type Completion: ALT. I ALT. II Depth of: DV Tool: w / sacks of cement Port Collar: w / sack of cement
Packer Type: Size: Inch Set at: Feet
Total Depth: Plug Back Depth: Plug Back Method:

Geological Data:

Table with 4 columns: Formation Name, Formation Top, Formation Base, Completion Information. Rows 1 and 2.

UNDER PENALTY OF PERJURY I HEREBY ATTEST THAT THE INFORMATION CONTAINED HEREIN IS TRUE AND CORRECT TO THE BEST OF MY KNOWLEDGE

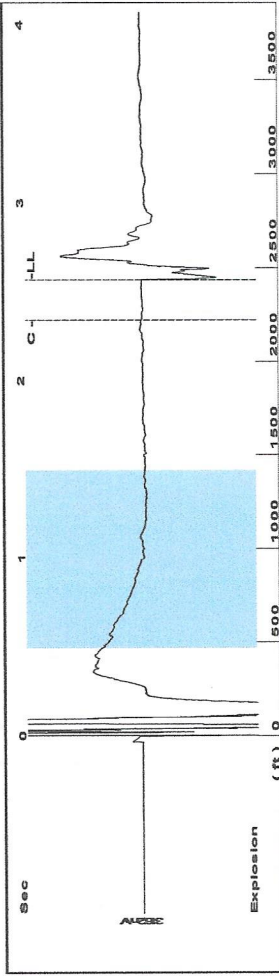
Submitted Electronically

Do NOT Write in This Space - KCC USE ONLY
Date Tested: Results: Date Plugged: Date Repaired: Date Put Back in Service:
Review Completed by: Comments:
TA Approved: Yes Denied Date:

Mail to the Appropriate KCC Conservation Office:

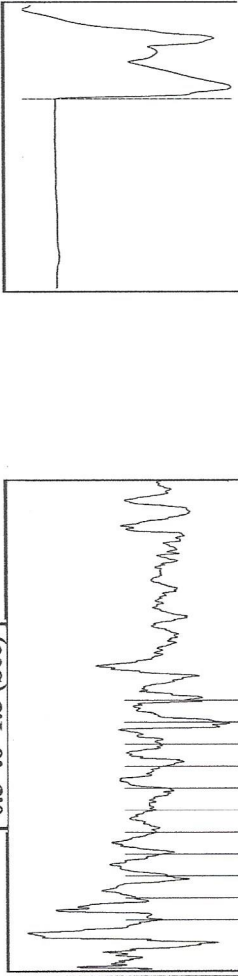
Table with 2 columns: Office Address, Phone. Rows for District Office #1, #2, #3, #4.

Group: MyWells Well: Kriss Farms #1 (acquired on: 09/04/18 11:58:33)



Filter Type High Pass Automatic Collar Count Yes Time 2.569 sec
 Manual Acoustic Velocity 852.68 ft/s Manual JTS/sec 22.3214 Joints 58.6671 Jts
 Depth 2434.68 ft

[0.5 to 1.5 (Sec)]



Analysis Method: Automatic

Group: MyWells Well: Kriss Farms #1 (acquired on: 09/04/18 11:58:33)

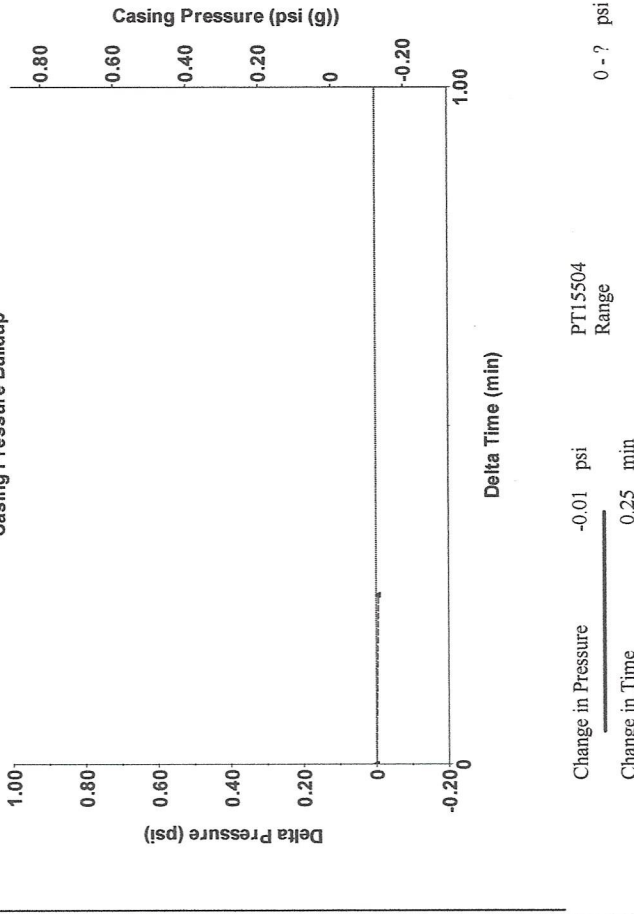
Production	Potential	Casing Pressure	-0.1 psi (g)
Oil 0	BBL/D	Casing Pressure Buildup	-0.006 psi
Water 0	BBL/D	Gas/Liquid Interface Pressure	0.25 min
Gas 0.0	Mscf/D	Liquid Level Depth	2434.68 ft
IPR Method	Vogel	Pump Intake Depth	- * - ft
PBHP/SBHP	- * -	Formation Depth	4252.00 ft
Production Efficiency	0.0	Acoustic Velocity	1895.43 ft/s
Oil 39 deg API		Formation Submergence	1817 ft
Water 1.05 Sp.Gr.H2O		Total Gaseous Liquid Column HT (TVD)	1817 ft
Gas 0.55 Sp.Gr.AIR		Equivalent Gas Free Liquid HT (TVD)	
Acoustic Test			



Pump Intake - * - psi (g)
 Producing BHP 826.8 psi (g)
 Static BHP - * - psi (g)

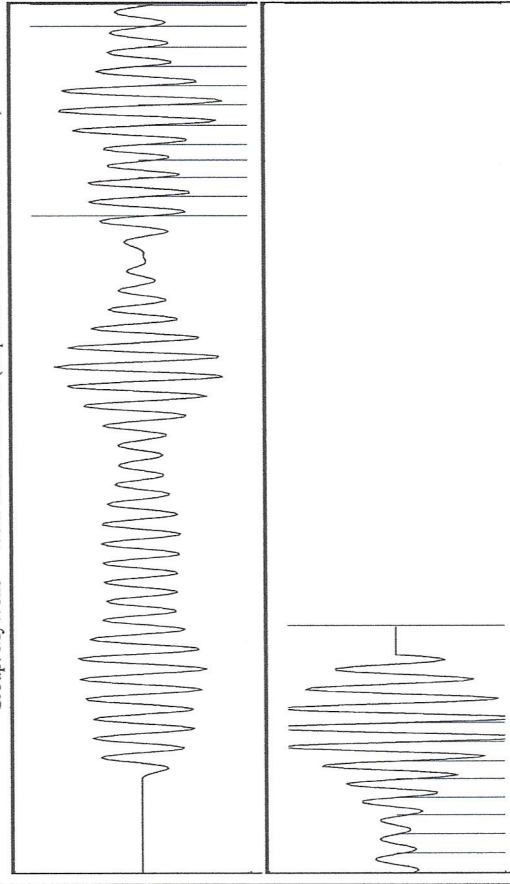
Group: MyWells Well: Kriss Farms #1 (acquired on: 09/04/18 11:58:33)

Casing Pressure Buildup



Change in Pressure -0.01 psi
 Change in Time 0.25 min
 PT15504 Range

Group: MyWells Well: Kriss Farms #1 (acquired on: 09/04/18 11:58:33)



Acoustic Velocity 1895.43 ft/s Joints counted 19
 Joints Per Second 22.8365 jts/sec Joints to liquid level 58.6671
 Depth to liquid level 2434.68 ft Filter Width 20.3214
 Automatic Collar Count Yes Time to 1st Collar 2.344

STATE OF KANSAS

CORPORATION COMMISSION
CONSERVATION DIVISION
DISTRICT OFFICE No. 4
2301 E. 13TH STREET
HAYS, KS 67601-2651



PHONE: 785-261-6250
FAX: 785-625-0564
<http://kcc.ks.gov/>

GOVERNOR JEFF COLYER, M.D.

SHARI FEIST ALBRECHT, CHAIR | JAY SCOTT EMLER, COMMISSIONER | DWIGHT D. KEEN, COMMISSIONER

September 04, 2018

Chris Peters
Hartman Oil Co., Inc.
10500 E BERKELEY SQ PKWY STE 100
WICHITA, KS 67206

Re: Temporary Abandonment
API 15-193-20708-00-00
KRISS FARMS 1
SW/4 Sec.13-10S-33W
Thomas County, Kansas

Dear Chris Peters:

"Your temporary abandonment (TA) application for the well listed above has been approved. In accordance with K.A.R. 82-3-111 the TA status of this well will expire 09/04/2019.

- * If you return this well to service or plug it, please notify the District Office.
- * If you sell this well you are required to file a Transfer of Operator form, T-1.
- * If the well will remain temporarily abandoned, you must submit a new TA application, CP-111, before 09/04/2019.

You may contact me at the number above if you have questions.

Very truly yours,

RICHARD WILLIAMS "