

KANSAS CORPORATION COMMISSION
OIL & GAS CONSERVATION DIVISION

TEMPORARY ABANDONMENT WELL APPLICATION

OPERATOR: License#
Name:
Address 1:
Address 2:
City: State: Zip:
Contact Person:
Phone:
Contact Person Email:
Field Contact Person:
Field Contact Person Phone:

API No. 15-
Spot Description:
Sec. Twp. S. R.
feet from N / S Line of Section
feet from E / W Line of Section
GPS Location: Lat: , Long:
Datum: NAD27 NAD83 WGS84
County: Elevation: GL KB
Lease Name: Well #:
Well Type: Oil Gas OG WSW Other:
SWD Permit #: ENHR Permit #:
Gas Storage Permit #:
Spud Date: Date Shut-In:

Table with 7 columns: Conductor, Surface, Production, Intermediate, Liner, Tubing. Rows include Size, Setting Depth, Amount of Cement, Top of Cement, Bottom of Cement.

Casing Fluid Level from Surface: How Determined? Date:
Casing Squeeze(s): to w / sacks of cement, to w / sacks of cement. Date:
Do you have a valid Oil & Gas Lease? Yes No
Depth and Type: Junk in Hole at Tools in Hole at Casing Leaks: Yes No Depth of casing leak(s):
Type Completion: ALT. I ALT. II Depth of: DV Tool: w / sacks of cement Port Collar: w / sack of cement
Packer Type: Size: Inch Set at: Feet
Total Depth: Plug Back Depth: Plug Back Method:

Geological Data:

Table with 4 columns: Formation Name, Formation Top, Formation Base, Completion Information. Rows 1 and 2.

UNDER PENALTY OF PERJURY I HEREBY ATTEST THAT THE INFORMATION CONTAINED HEREIN IS TRUE AND CORRECT TO THE BEST OF MY KNOWLEDGE

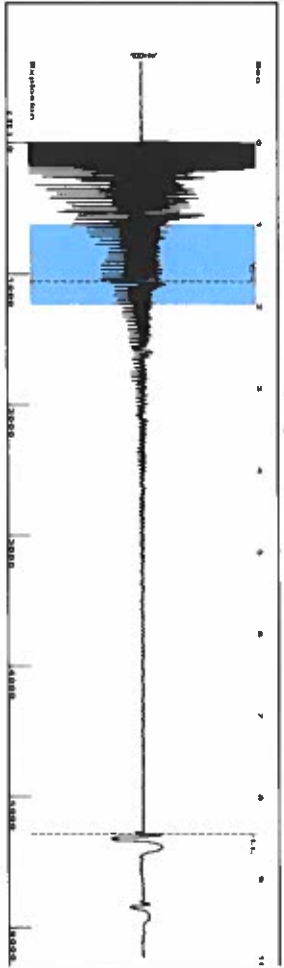
Submitted Electronically

Do NOT Write in This Space - KCC USE ONLY
Date Tested: Results: Date Plugged: Date Repaired: Date Put Back in Service:
Review Completed by: Comments:
TA Approved: Yes Denied Date:

Mail to the Appropriate KCC Conservation Office:

Table with 3 columns: District Office, Address, Phone. Rows for District Office #1, #2, #3, #4.

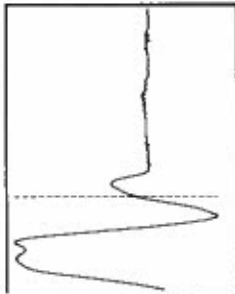
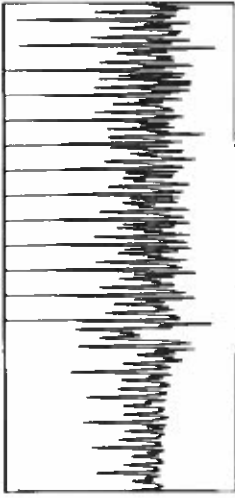
Group: MyWells Well: going 1-26 (acquired on: 08/29/18 15:47:23)



Filter Type High Pass Automatic Collar Count Yes
 Manual Acoustic Velo 1235.87 ft/s Manual JTS/sec 19.4932

Time 8.44 sec
 Joints 166.579 Jts
 Depth 5280.55 ft

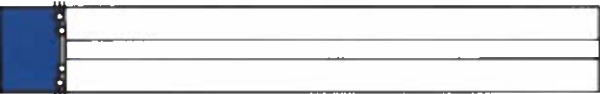
1.0 to 2.0 (Sec) |



Analysis Method: Automatic

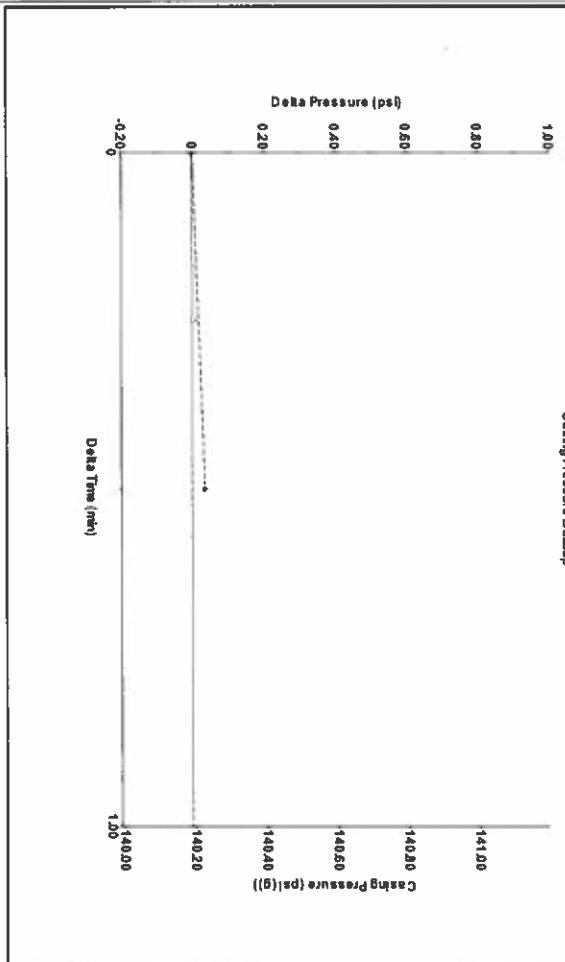
Group: MyWells Well: going 1-26 (acquired on: 08/29/18 15:47:23)

Production	Potential	Casing Pressure	Producing
Oil - *-	BBL/D	140.2 psi (g)	Annular Gas Flow
Water - *-	BBL/D	Casing Pressure Buildup	4 Mscf/D
Gas - *-	Mscf/D	0.0 psi	% Liquid
IPR Method	Vogel	Gas/Liquid Interface Pressure	100 %
PBHP/SBHP	- *-	162.1 psi (g)	
Production Efficiency	0.0	Liquid Level Depth	
Oil 40 deg/API		5280.55 ft	
Water 1.05 Sp.Gr.H2O		Pump Intake Depth	
Gas 0.74 Sp.Gr.AIR		5213.00 ft	
Acoustic Velocity	1251.32 ft/s	Formation Depth	
		5280.00 ft	



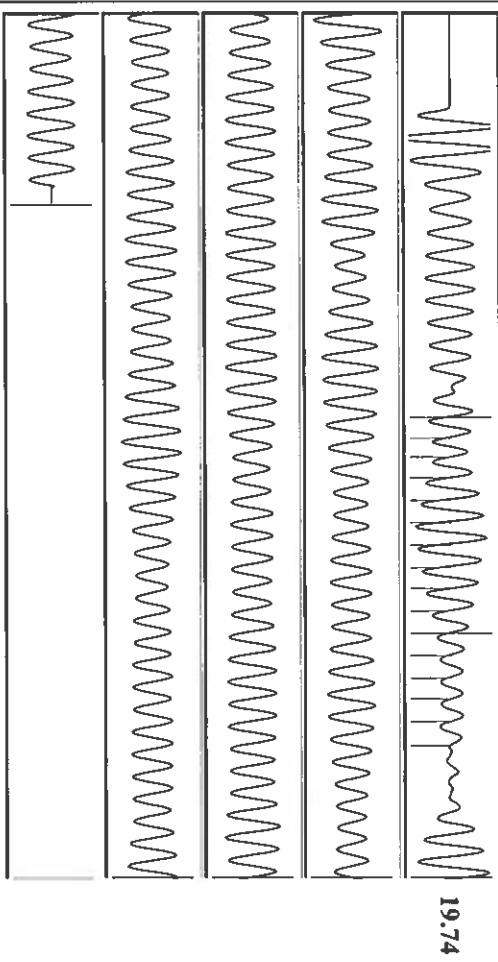
Pump Intake 161.8 psi (g)
 Producing BHP 162.1 psi (g)
 Static BHP - *- psi (g)

Group: MyWells Well: going 1-26 (acquired on: 08/29/18 15:47:23)
 Casing Pressure Buildup



Change in Pressure 0.04 psi PT9424
 Change in Time 0.50 min Range 0 - 2 psi

Group: MyWells Well: going 1-26 (acquired on: 08/29/18 15:47:23)



Acoustic Velocity 1251.32 ft/s Joints counted 15
 Joints Per Second 19.7368 Jts/sec Joints to liquid level 166.579
 Depth to liquid level 5280.55 ft Filter Width 17.4932
 Automatic Collar Count Yes Time to 1st Collar 0.932

STATE OF KANSAS

CORPORATION COMMISSION
CONSERVATION DIVISION
DISTRICT No. 1
210 E. FRONTVIEW, SUITE A
DODGE CITY, KS 67801



PHONE: 620-682-7933
<http://kcc.ks.gov/>

GOVERNOR JEFF COLYER, M.D.

SHARI FEIST ALBRECHT, CHAIR | JAY SCOTT EMLER, COMMISSIONER | DWIGHT D. KEEN, COMMISSIONER

September 05, 2018

Katherine McClurkan
Merit Energy Company, LLC
13727 Noel Road, Suite 1200
Dallas, TX 75240

Re: Temporary Abandonment
API 15-129-10142-00-00
GOING 1-26
SE/4 Sec.26-32S-41W
Morton County, Kansas

Dear Katherine McClurkan:

"Your temporary abandonment (TA) application for the well listed above has been approved. In accordance with K.A.R. 82-3-111 the TA status of this well will expire 09/05/2019.

- * If you return this well to service or plug it, please notify the District Office.
- * If you sell this well you are required to file a Transfer of Operator form, T-1.
- * If the well will remain temporarily abandoned, you must submit a new TA application, CP-111, before 09/05/2019.

You may contact me at the number above if you have questions.

Very truly yours,

Michael Maier"