

L-D. DRILLING, INC.
 ILENE LEASE
 SE. 1/4, SECTION 2, T14S, R32W
 LOGAN COUNTY, KANSAS

Directions:

From the intersection of Highway 40 and Highway 83 south (south edge of Oakley, Ks.) go 18.0 miles South on Highway 83 to the SW. corner of Section 2, then go 0.80 miles East, then go 0.24 miles North to location.

17 MILES TO
 OAKLEY, KS.

(MUSTANG RD.) NO ROAD

Notes:

1. Set iron rod at location site.
2. All flagging Red & Yellow.
3. Overhead power available at W. line, Sec. 2.
4. Kansas One Call System Inc. should be notified before excavation (1-800-344-7233).
5. CAUTION; Various pipelines in Sec. 2.
6. Cattle in pasture at date of staking.
7. Contact landowner for best access.
8. Drillsite area will require approximately a 2' cut/fill.

NO ROAD

HIGHWAY 83

ROAD

NO

NO

Drillsite Location
 Ilene #1-2
 1291'FSL 1070'FEL
 Ground Elevation = 2855

Y = 205319 X = 1191827

State Plane-NAD 27-Kansas North

Latitude 38.862305
 Longitude -100.838566
 NAD 27

PRODUCER
 2869

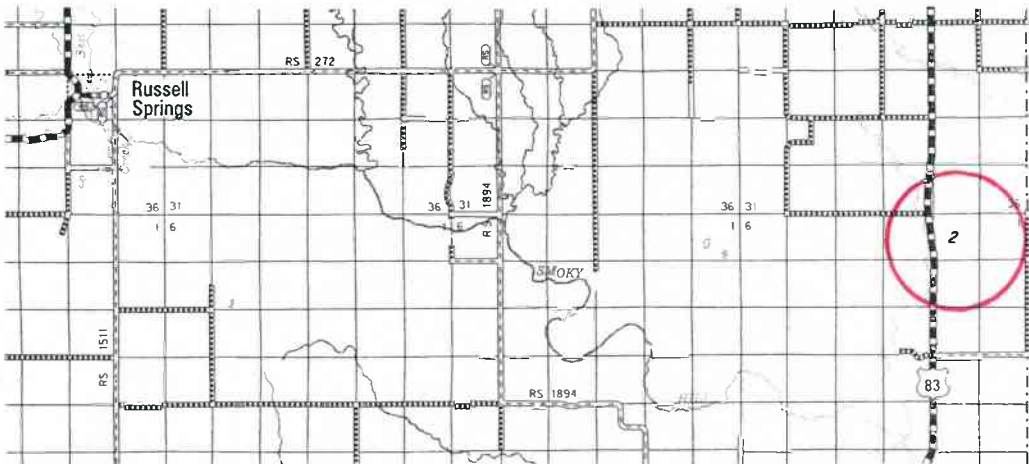
PASTURE

GATE
 (CLOSED)
 (UNLOCKED)

LARIAT RD.) NO ROAD

ROAD

GATE
 (CLOSED)
 (LOCKED)



*Ingress and egress to location as shown on this plat is per usage only and may not be legally opened for public use. Contact landowner, tenant and county road department for access.

• Controlling data is based upon the best maps and photographs available to us and upon a regular section of land containing 640 acres.
 • Approximate section lines were determined using the normal standard of care of oilfield surveyors practicing in the State of Kansas. The section corners, which establish the precise section lines, were not necessarily located, and the exact location of the drillsite location in the section is not guaranteed. Therefore, the operator securing this service and accepting this plat and all other parties relying thereon agree to hold Central Kansas Oilfield Services, Inc., its officers and employees harmless from all losses, costs and expenses and said entities released from any liability from incidental or consequential damages.
 • Elevation derived from National Geodetic Vertical Datum.

Date July 25, 2018