

L.D. DRILLING, INC.
 NUSS LEASE
 SW.1/4, SECTION 35, T13S, R32W
 LOGAN COUNTY, KANSAS

Directions:

From the intersection of Highway 40 and Highway 83 south (south edge of Oakley, Ks.) go 16.0 miles south on Highway 83 to the NW. corner of Section 35, then go 0.31 miles East, then go 0.54 miles South to location.

16.0 MILES TO
 OAKLEY, KS.

(NAVAJO RD.) GRAVEL (RD NAME) ROAD

Notes:

1. Set (2) wood stakes at location site.
2. All flagging Red & Yellow.
3. Overhead power available at N. & W. lines, Sec.35.
4. Kansas One Call System Inc. should be notified before excavation (1-800-344-7233).
5. CAUTION; Various pipelines in Sec.35.
6. Contact landowner for best access.
7. Location fell between terraces.
8. Drillsite area will require approximately a 1'cut/fill.

TANK BATTERY

HIGHWAY 83

NO ROAD

ROAD

35

Drillsite Location
 Nuss #2
 2432'FSL 1649'FWL
 Ground Elevation = 2896
 Y = 211796 X = 1189607
 State Plane-NAD 27-Kansas North
 Latitude 38.879889
 Longitude -100.847074
 NAD 27

PLOWED GROUND

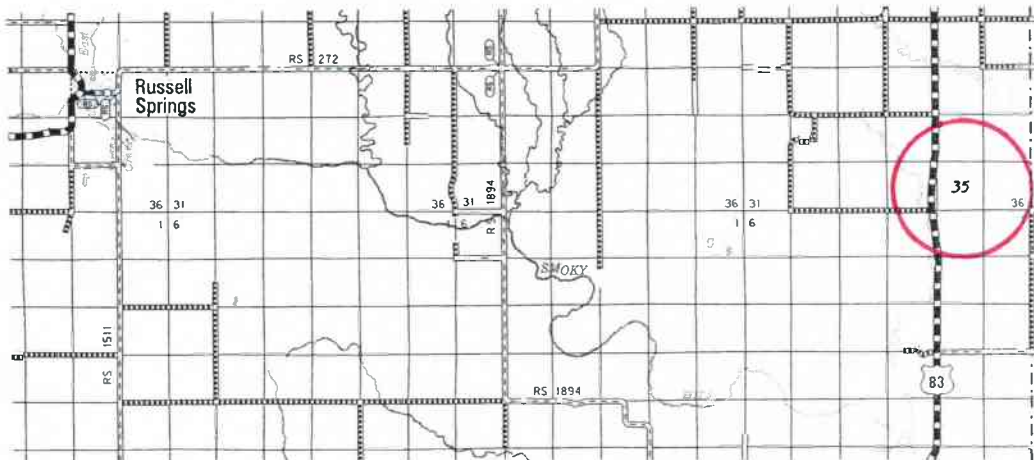
PRODUCER 2872

* Ingress and egress to location as shown on this plat is per usage only and may not be legally opened for public use. Contact landowner, tenant and county road department for access.

SCALE 1" = 1000'

C.K.S.M.

(MUSTANG RD.) NO ROAD



- * Controlling data is based upon the best maps and photographs available to us and upon a regular section of land containing 640 acres.
- * Approximate section lines were determined using the normal standard of care of oilfield surveyors practicing in the state of Kansas. The section corners, which establish the precise section lines, were not necessarily located, and the exact location of the drillsite location in the section is not guaranteed. Therefore, the operator securing this service and accepting this plat and all other parties relying thereon agree to hold Central Kansas Oilfield Services, Inc., its officers and employees harmless from all losses, costs and expenses and said entities released from any liability from incidental or consequential damages.
- * Elevations derived from National Geodetic Vertical Datum.

Date July 25, 2018

CENTRAL KANSAS OILFIELD SERVICES, INC. (620)792-1977