

ADVANTAGE ELEVATIONS

OIL FIELD SURVEYORS

BOX 8604 - PRATT, KS 67124
(620) 672-6491

81181

INVOICE NO

HOWELL OIL CO. INC

OPERATOR

14

NO

SABIN B

FARM

RENO

COUNTY

13

S

23s

T

4w

R

990' ENL & 660' FEL of SEC.

LOCATION

1470' GR

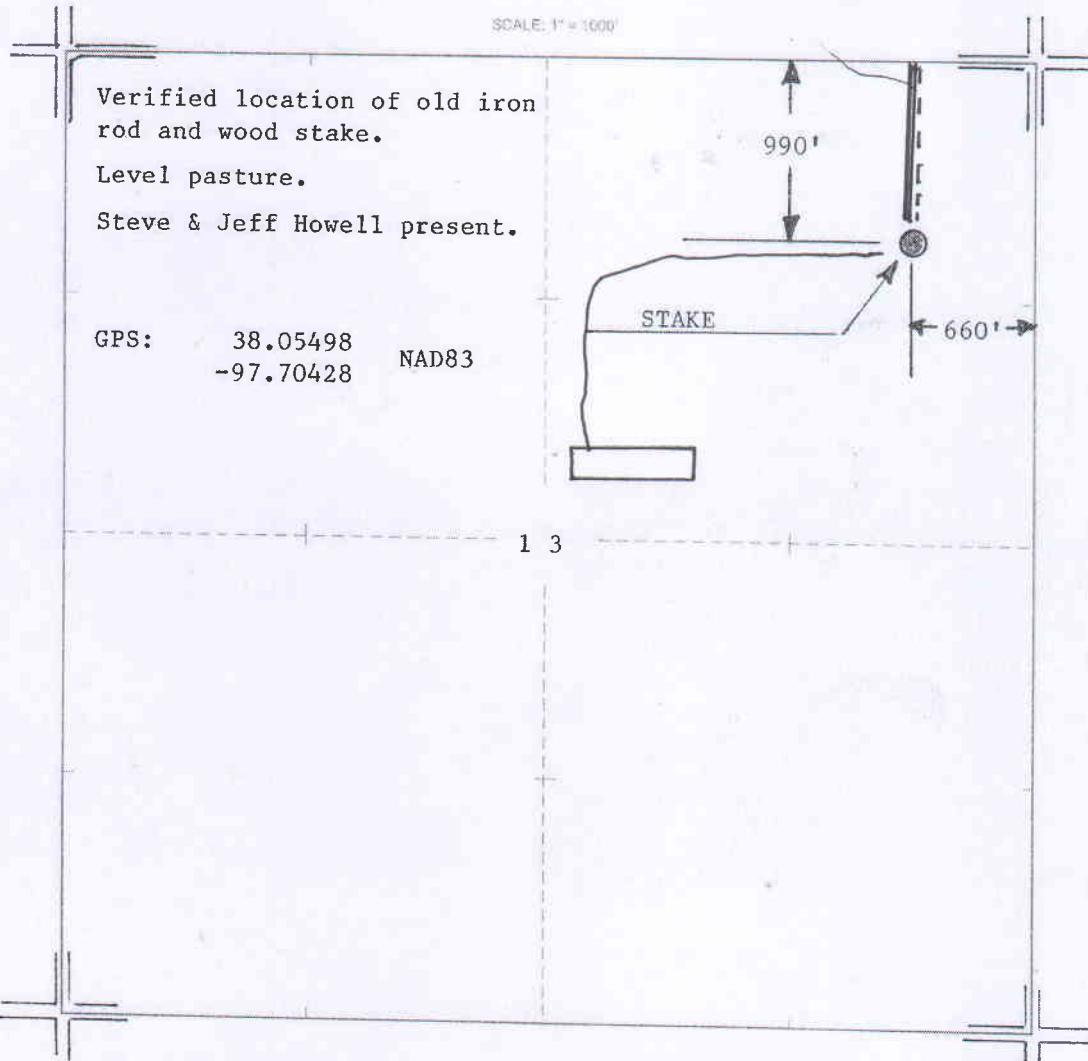
ELEVATION



HOWELL OIL CO. INC
2400 Riverbirch Rd.
Hutchinson, KS 67502-9280

AUTHORIZED BY: Steve Howell

SCALE: 1" = 1000'



DATE STAKED: 8/1/18