

**GEOLOGIST'S REPORT**  
DRILLING TIME AND SAMPLE LOG

<b>COMPANY</b> WEBSTER OIL, LLC		<b>ELEVATIONS</b>	
<b>LEASE</b> POTTER "B" #1		<b>KB</b> 1351'	<b>GL</b> 1342'
<b>FIELD</b> FOX-BUSH-COUCH		<b>Measurements Are All From</b> KB:1351'	
<b>LOCATION</b> 770' FSL & 2310' FWL (S/2-NE-SE-SW/4)		<b>API</b> 15-015-24093-00-00	
<b>SECTION</b> 26 <b>TOWNSHIP</b> 28S <b>RANGE</b> 05E			
<b>COUNTY</b> BUTLER <b>STATE</b> KANSAS			

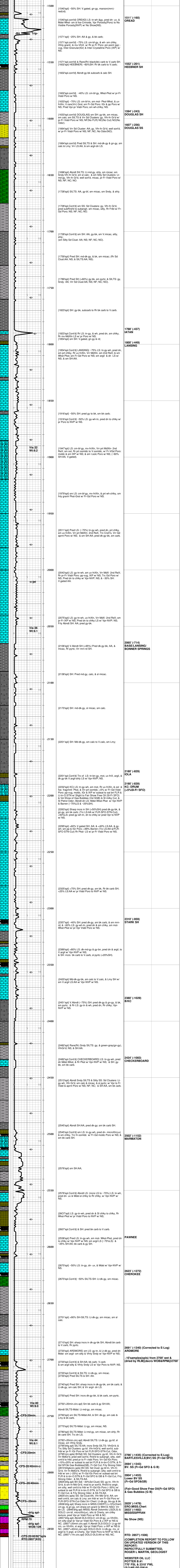
<b>CONTRACTOR</b> C & G DRILLING, RIG #2	<b>CASING</b>
<b>SPUD</b> 9:40A/03/14/18 <b>COMP</b> 03/17/2018	<b>SURFACE</b> 230.93' of 8&5/8"
<b>RTD</b> 2857' (-1606) <b>LTD</b> 2850.4 {Cased hole}	<b>PRODUCTION</b> 5&1/2" csg tag TD & Cmt'd
<b>ELECTRICAL SURVEYS</b>	
NO OPEN HOLE E-LOGS; NO DST'S	
CORNISH:GR/N/SONIC CEMENT BOND (Cased hole E-Log)	

FORMATION TOPS	LOG	SAMPLES	CHRONOLOGY
OREAD LS	1510' (-159)	1511' (-160)	
HEEBNER SH	1551' (-200)	1552' (-201)	3/14/18: Spud 12&1/4" hole @ 9:40am. Drill to 246' & C/TCH 20min. TDH: Ran 230' 58" of 8&5/8" surf csg.
DOUGLAS GRP/SH	1594' (-243)	1594' (-243)	cmt'd w/ 110sx; plug dwn @ 5:45pm; brk out landing jt @ 9:45pm; drill mousehole.
DOUGLAS SS	1606' (-255)	1607' (-256)	
IATAN LS	1789' (-438)	1788' (-437)	3/15/18: nipple up; TH: drill cmt. -20' under surf@2am. Drig @ 600' @ -7:00am; Drig@1304@-3:00pm.
LANSING	1798' (-447)	1800' (-449)	
BLANS/BONNER SPRINGS SH	2065' (-714)	2065' (-714)	3/16/18: Bit Trip @ 1526' on btm w/new bit @ 2:00am. Drig @ 1847' @ -7:00am; Drig@2263@-3:00pm.
IOLA	2181' (-830)	2180' (-829)	
KC: DRUM	2189' (-838)	2190' (-839)	
STARK SH	2311' (-960)	2310' (-959)	3/17/18: CFS@2750/20min. CFS@2783/20min. CFS@2795/40min. CFS@2810/40min. CFS@2826/20min. CFS@2857/20'40'60min.spls/CCH/RTD@-6:30am. Short Trip 24 stands; C/TCH 1hr. I/OH/LLDP@-10:20am. RU & run & cmt 5&1/2" prod csg. Plug Dwn @ -5:30pm.
CHECKERBOARD LS	2438' (-1087)	2434' (-1083)	
MARMATON	2503' (-1152)	2502' (-1151)	
CHEROKEE	2623' (-1272)	2623' (-1272)	
ARDMORE	2691' (-1340)	2691' (-1340) {Corrected}	
TOP: BARTLESVILLE SS	2786' (-1435)	2789' (-1438)	
B: Upper BV SS	2789' (-1438)	2790' (-1439)	
Mid: BV SS	2794' (-1443)	2794' (-1443)	
B: Mid: BV SS	2798' (-1447)	2798' (-1447)	
LOWER BV SS	2804' (-1453)	2804' (-1453)	
Base: BV SS	2824' (-1473)	2825' (-1474)	
EROS, MISS. CHERT	2827' (-1476)	2829' (-1478)	
MISSISSIPPIAN DLS & DOLO	2837' (-1486)	2839' (-1488)	
TOTAL DEPTH (LTD/RTD)	2850' (-1499)	2857' (-1506)	
		cased hole PBTD	

**REMARKS:** On 03/17/2018, 5&1/2" production casing was set to further evaluate Bartesville Sandstone of the Cherokee Group.  
(Completion details to follow on updated report).

Respectfully submitted,  
Roger L. Martin, Geologist (Well-site)  
Office: (316) 250-6970  
Phone: (316) 833-2722  
Alt. Cell: (316) 655-1227  
email: rmartin@rogerlmartin.com  
rogerlmartingeo@yahoo.com

(print length: 91" @ 5'100"/scale)



RTD: 2857' (-1506)  
ON UPDATE REPORT TO FOLLOW  
ON UPDATED VERSION OF THIS REPORT  
REPECTFULLY SUBMITTED,  
ROGER L. MARTIN, GEOLOGIST  
WEBSTER OIL LLC  
POTTER B #1  
770' FSL & 2310' FWL (S/2-NE-SE-SW/4)  
Sec: 25-28S-5E  
FOX-BUSH-COUCH  
BUTLER CNTY, KS  
API#15-015-24093-00-00  
KB: 1351' GL: 1342'