

Scale 1:240 Imperial

Well Name: JOHANSEN #6
Surface Location: SE NW SW NE Sec. 34 - 11S - 17W
Bottom Location:
API: 15-051-26906
License Number: 33813
Spud Date: 3/27/2018 Time: 12:00 AM
Region: ELLIS COUNTY
Drilling Completed: 4/2/2018 Time: 6:00 AM
Surface Coordinates: 1800' FNL & 1360' FSL
Bottom Hole Coordinates:
Ground Elevation: 2093.00ft
K.B. Elevation: 2101.00ft
Logged Interval: 0.00ft To: 0.00ft
Total Depth: 3685.00ft
Formation: ARBUCKLE
Drilling Fluid Type: FRESH WATER / CHEMICAL GEL

OPERATOR

Company: JASON OIL COMPANY, LLC.
Address: 3718 183RD ST
P.O. 701
RUSSELL, KS 67665
Contact Geologist: JIM SCHOENBERGER
Contact Phone Nbr: (785) 483-4204
Well Name: JOHANSEN #6
Location: SE NW SW NE Sec. 34 - 11S - 17W
API: 15-051-26906
Pool: State: KANSAS Field: BEMIS - SHUTTS
Country: USA

SURFACE CO-ORDINATES

Well Type: Vertical
Longitude: -99.1902221
Latitude: 39.0550365
N/S Co-ord: 1800' FNL
E/W Co-ord: 1360' FSL

LOGGED BY



Company: BIG CREEK CONSULTING, INC.
Address: 1909 MAPLE
ELLIS, KS 67637
Phone Nbr: (785) 259-3737
Logged By: GEOLOGIST Name: JEFF LAWLER

CONTRACTOR

Contractor: DISCOVERY DRILLING
Rig #: 1
Rig Type: MUD ROTARY
Spud Date: 3/27/2018 Time: 12:00 AM
TD Date: 4/2/2018 Time: 6:00 AM
Rig Release: 4/3/2018 Time: 12:00 AM

ELEVATIONS

K.B. Elevation: 2101.00ft
K.B. to Ground: 8.00ft

Ground Elevation: 2093.00ft

NOTES


DUE TO ECONOMICAL RECOVERY ON DST #1 PRODUCTION CASING WAS RUN TO FURTHER EVALUATE THE ARBUCKLE WITH PERFORATION.

RESPECTFULLY SUBMITTED,
JEFF LAWLER

WELL COMPARISON CHART

FORMATION	JOHANSEN #6								P&A 6-84				P&A SWD			
	DREILING #3				DREILING #6				DREILING #5							
	NE NE SE NE 34-11-17				W2 E2 NE 34-11-17				NE NE SE 34-11-17							
	KB	2101	GL	2093	KB	1993	KB	2032	KB	2106	KB	2003				
	LOGTOPS	SAMPLETOPS	COMP. CARD	LOG	SMPL.	COMP. CARD	LOG	SMPL.	COMP. CARD	LOG	SMPL.	COMP. CARD	LOG	SMPL.		
DEPTH	DATUM	DEPTH	DATUM	DEPTH	DATUM	DEPTH	DATUM	DEPTH	DATUM	DEPTH	DATUM	DEPTH	DATUM	DEPTH	DATUM	
ANHYDRITE TOP	1295	806	1295	806	1180	813	-	7	-	7						
BASE	1330	771	1320	781	1217	776	-	5	+	5						
TOPEKA	3029	-928	3027	-926	2917	-924	-	4	-	2	2960	-928	+	0	+	2
HEEBNER	3263	-1162	3262	-1161	3152	-1159	-	3	-	2	3195	-1163	+	1	+	2
TORONTO	3286	-1185	3285	-1184	3174	-1181	-	4	-	3	3217	-1185	+	0	+	1
LKC	3320	-1219	3319	-1218	3209	-1216	-	3	-	2	3228	-1196	-	23	-	22
BKC	3547	-1446	3546	-1445	3436	-1443	-	3	-	2						
CONGLOMERATE																
ARBUCKLE	3573	-1472	3570	-1469	3463	-1470	-	2	+	1	3510	-1478	+	6	+	9
GRANITE WASH																
GRANITE																
TOTAL DEPTH	3688	-1587	3685	-1584	3615	-1622	+	35	+	38	3559	-1527	-	60	-	57

DST #1 ARBUCKLE 3540' - 3585'



TRIOBITE TESTING, INC.

DRILL STEM TEST REPORT

Jason Oil Company **34-11s-17w Ellis KS**

Box 701 **Johansen #6**

Russell, KS 67665 Job Ticket: 63274 **DST#: 1**

ATTN: Jeff Lawler Test Start: 2018.04.01 @ 16:34:50

GENERAL INFORMATION:

Formation: **Arbuckle**
 Deviated: No Whipstock: ft (KB)
 Time Tool Opened: 18:35:20
 Time Test Ended: 22:53:10

Interval: **3540.00 ft (KB) To 3585.00 ft (KB) (TVD)**
 Total Depth: 3585.00 ft (KB) (TVD)
 Hole Diameter: 7.88 inches Hole Condition: Good

Test Type: Conventional Bottom Hole (Initial)
 Tester: Paul Simpson
 Unit No: 65

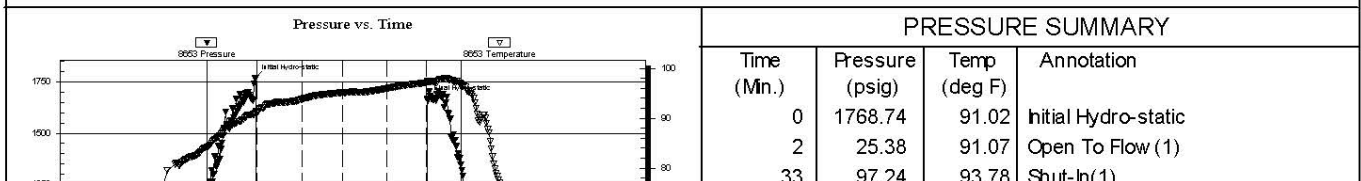
Reference Elevations: 2101.00 ft (KB)
 2093.00 ft (CF)
 KB to GR/CF: 8.00 ft

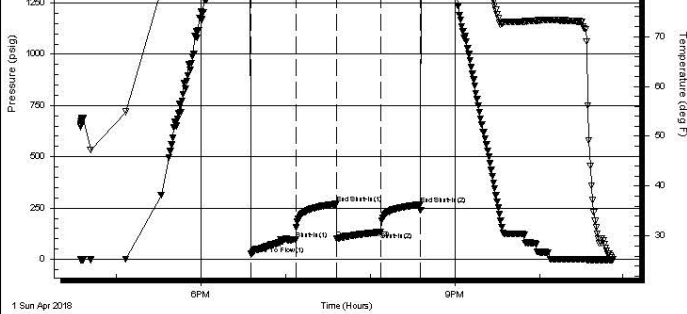
Serial #: 8653 Inside

Press@RunDepth: 134.74 psig @ 3541.00 ft (KB)
 Start Date: 2018.04.01 End Date: 2018.04.01
 Start Time: 16:34:50 End Time: 22:53:10

Capacity: 8000.00 psig
 Last Calib.: 1899.12.30
 Time On Btm: 2018.04.01 @ 18:34:10
 Time Off Btm: 2018.04.01 @ 20:36:10

TEST COMMENT: IF 30- weak 1/2" blow died in 20 minutes
 ISI 30
 FF-30 surface blow died - flush tool no blow after surge
 FSI-30





62	269.94	95.17	End Shut-In(1)
63	100.17	95.06	Open To Flow (2)
94	134.74	95.98	Shut-In(2)
122	266.50	97.11	End Shut-In(2)
122	1669.19	97.31	Final Hydro-static

Recovery

Length (ft)	Description	Volume (bbl)
60.00	M&WCO 70% O 10%W 20%M	0.30
100.00	MCO 60%O 40%M	0.49
160.00	Clean Oil	0.87

Gas Rates

	Choke (inches)	Pressure (psig)	Gas Rate (Mcf/d)
--	----------------	-----------------	------------------

Trilobite Testing, Inc

Ref. No: 63274

Printed: 2018.04.01 @ 23:27:19

ROCK TYPES

Cht	Lmst fw7>	shale, gry	Shblk	Shcol
Dolprim	shale, grn	Carbon Sh	shale, red	

OTHER SYMBOLS

- DST**
- DST Int
 - DST alt

Printed by GEOstrip VC Striplog version 4.0.8.15 (www.grsi.ca)

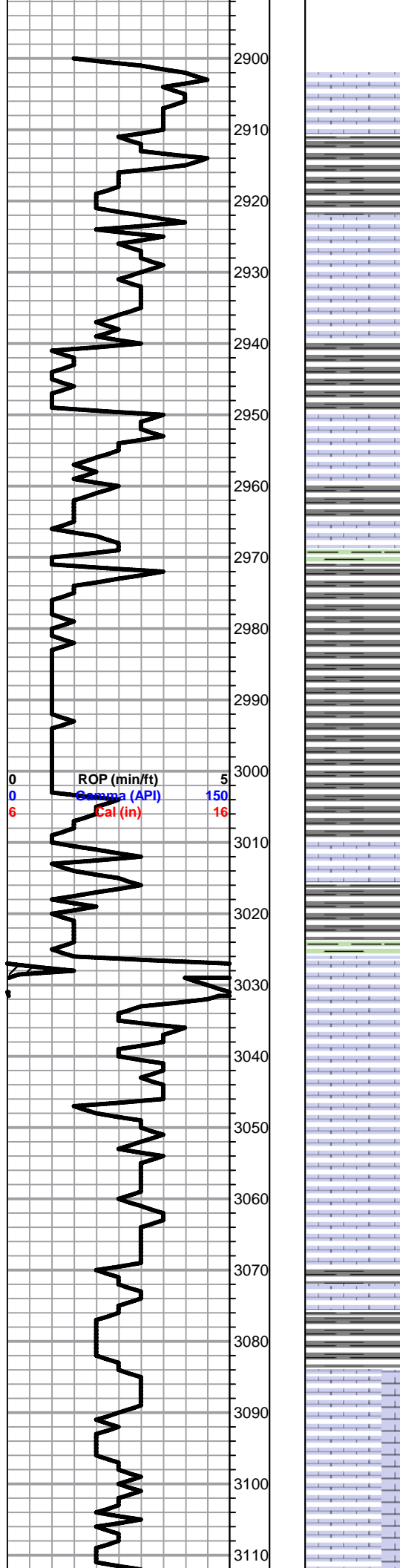
Curve Track #1				Depth Intervals	DST	Lithology	Oil Show	Geological Descriptions	Curve Track #3				
ROP (min/ft)	Gamma (API)	Cal (in)											
1:240 Imperial	ROP (min/ft)	5							1:240 Imperial				
	Gamma (API)	150											
	Cal (in)	16											
				2860									
				2870									
				2880									
				2890									

1' DRILL TIME THROUGH ANHYDRITE FROM 1260' - 1340'
1' DRILL TIME FROM 2900' - RTD
10' WET/DRY SAMPLES FROM 2950' - RTD

GEOLOGICAL SUPERVISION BY JEFF LAWLER FROM 2900' - RTD

8 5/8" SURFACE PIPE SET AT 224'

ANHYDRITE TOP 1295' (+806) E-LOG 1295' (+806)
ANHYDRITE BOTTOM 1320' (+781) E-LOG 1330' (+771)



Sh- Gray Green, dense & waxy, silty & calcareous, Green Fn Grn chalky Ss, consolidated & well sorted, loosley cemented, barren

Lm- Tan Brown, dense, mostly well cemented, sl sctrd fsl, sctrd XLN porosity, barren

Lm- Cream Buff, VFXLN, dnse, well cemented, mostly tight w/ sctrd XLN fsl porosity & some sctrd clear replacement cementation

Sh- Gray, dense & waxy, argillaceous clumps

Sh- Gray, soft & argillaceous, some shaley & calcareous Ss w/ blk mica

ROP (min/ft) 5
 Gamma (API) 150
 Cal (in) 16

BIT TRIP @ 3032'

TOPEKA 3027' (-926) E-LOG 3029' (-928) Lm- Buff Off White, FXLN, dense, well cemented, fsl, several pcs of densely packed small oolites, poor vis. porosity, barren

Lm- Cream, VFXLN, dense, vry well cemented, tight w/ poor XLN porosity

Lm- Cream Tan, FXLN, fsl, massive, well cemented, sl chalky in parts, barren

Lm- Cream Buff Drk Gray, dense, well cemented, poorly developed & sl fsl, sctrd XLN porosity, few pcs sl oolitic, barren

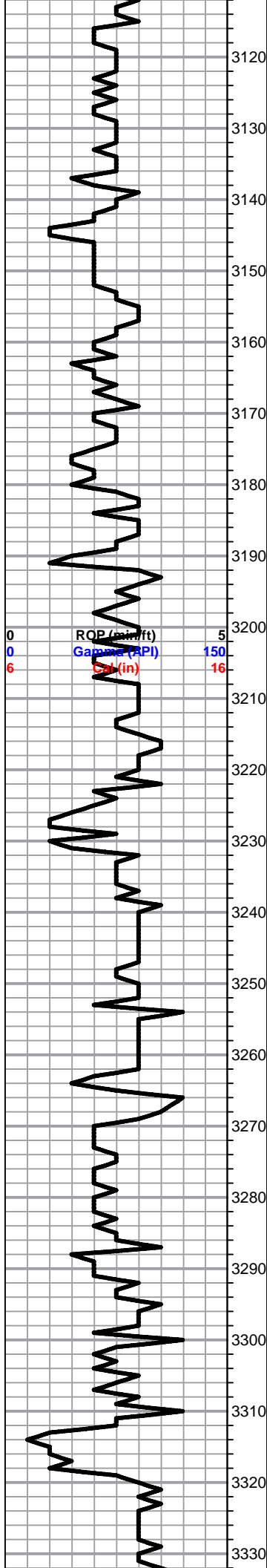
Lm- Buff Gray, VF-FXLN, dense, well cemented, mix of no vis. porosity & sctrd fsl XLN porosity, sl trashy, barren

Lm- Gray Buff, VF-FXLN, dense, well cemented, tight & poorly dev. w/ min. vis. porosity, barren

Lm- Lt Gray, well cemented, poorly dev. & tight, min. sctrd micro XLN porosity

Lm- Cream Off White, FXLN, densely packed fsl, dense micro XLN & XLN porosity, barren

Lm/Chert- Black Cream, porcelain like sl fsl cherty Ls w/o vis. porosity



Lm- Cream Gray, FXLN, dense & well cemented, poorly developed w/ poor vis. porosity, barren

Sh-Black, soft, carbonaceous

Lm- Cream Off White Lt Gray, fn grn, loosley cemented & chalky, mottled

Lm- Cream, VFXLN, dense, well cemented, tight, porcelain like cherty Ls w/ no vis. porosity

Lm- Tan, A/A, several pcs of fresh bedded fsl chert

Sh- Black Gray, carbonaceous, silty & soft

Lm- Cream Off White, FXLN, dense well cemented, gritty dolomitic Lm w/ poor vis. porosity, sl mottled, barren

Lm- Cream, Fn Grn, loosely cemented, chalky, poor vis. porosity

Lm- Cream Buff, Fn Grn, heavily mottled, loosely cemented, chalky in part, barren

Lm- Cream, VFXLN, dense, well cemented, tight w/ poor vis. porosity

Lm- Off White, Fn Grn, mud supported matrix, chalky & loosely cemented, mottled, barren, several pcs of gritty sl dolomitic Ls w/ poor XLN porosity, TRACE OF ODOR???

HEEBNER 3262' (-1161) E-LOG 3263' (-1162) Sh- Black Green, fissile & carbonaceous, gummy & argillaceous

Sh- Gray Maroon, argillaceous, gritty & earthy

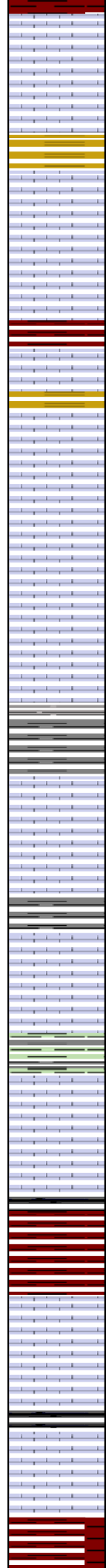
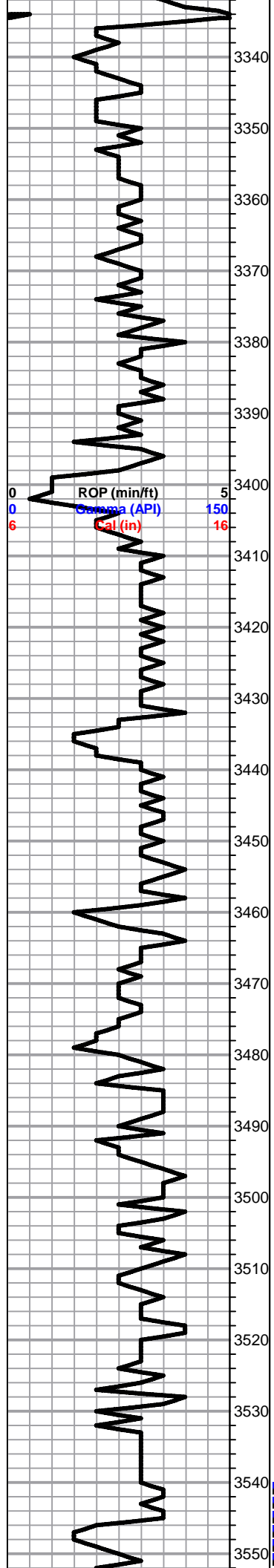
TORONTO 3285' (-1184) E-LOG 3286' (-1185) Lm- White Off White, FXLN, fsl & sl oolitic, poorly dev. w/ sctrd XLN porosity, LT SCTRD STN, NSFO, TR ODR

Lm- Buff Cream, FXLN, oolitic, mod. dev. w/ small ppt porosity, DRK STN, OILY SHEEN, NO ODR

Sh- Maroon Gray Green, gritty & earthy, argillaceous clumps

Ss/Sh- Maroon, sandy shale/shaley Ss

LKC 3319' (-1218) E-LOG 3320' (-1219) Lm- Cream Off White, FXLN, sl fsl, poorly dev. w/ sctrd XLN porosity, several pcs of sl fsl fresh bedded chert, all barren



Lm- Buff Off White, FXLN, fsl, poorly dev. w/ sctrd XLN porosity, barren, chalky in parts

Lm- Cream Off White, FXLN, fsl & oolitic, sctrd fn ppt inter fsl porosity, DRK STN, TR FO, WK ODR

Lm- Off White, FXLN, well cemented, poorly dev. w/ sctrd XLN porosity, barren

Lm- Cream Tan, FXLN, dense XLN porosity, FR DRK STN, NSFO, FR ODR

Lm- White, FXLN, fsl & sl oolitic, dense fn ppt inter fsl porosity, SCTRD LT STN, NSFO, FR ODR

Lm- Off White, F-Med XLN, oolimoldic/oolitic, mod well dev. w/ sctrd ppt porosity, DRK SCTRD STN, GASSY BUBBLEY OIL SHOW, FR ODR

Lm- Gray Off White, VF-FXLN, dense, well cemented, sctrd XLN porosity barren

Lm- A/A

Sh- Black Gray, fissile & carbonaceous, argillaceous clumps

Lm- Off White, FXLN, dense, loosely cemented, sctrd dense XLN porosity, LT SCTRD STN, NSFO, WK ODR

Lm- Cream Off White, FXLN, oolitic, oomoldic, sctrd ppt inter oolite porosity, DRK STN, HVY SHEEN, SHW FO, FR ODR

Sh- Gray Green, argillaceous clumps

Lm- Green White, dense & well cemented, mostly tight w/ poor vis. porosity, few pcs of FXLN fsl w/ ppt & XLN porosity, DRK STN, TR FO, FR ODR

Sh- Black Gray Maroon, fissile & carbonaceous, argillaceous clumps, gritty & earthy

Lm- Cream Off White Tan, FXLN, dense, well cemented, mostly tight w/ sctrd XLN porosity, some chalky in part, barren

Lm- Cream Buff, FXLN, dense, well cemented, mostly tight w/ poor vis. porosity

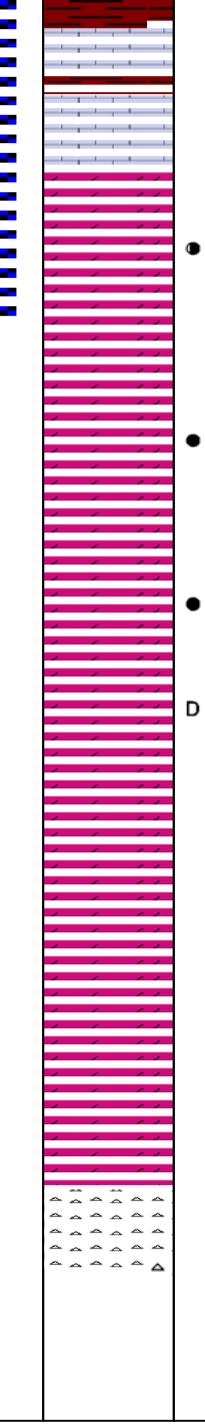
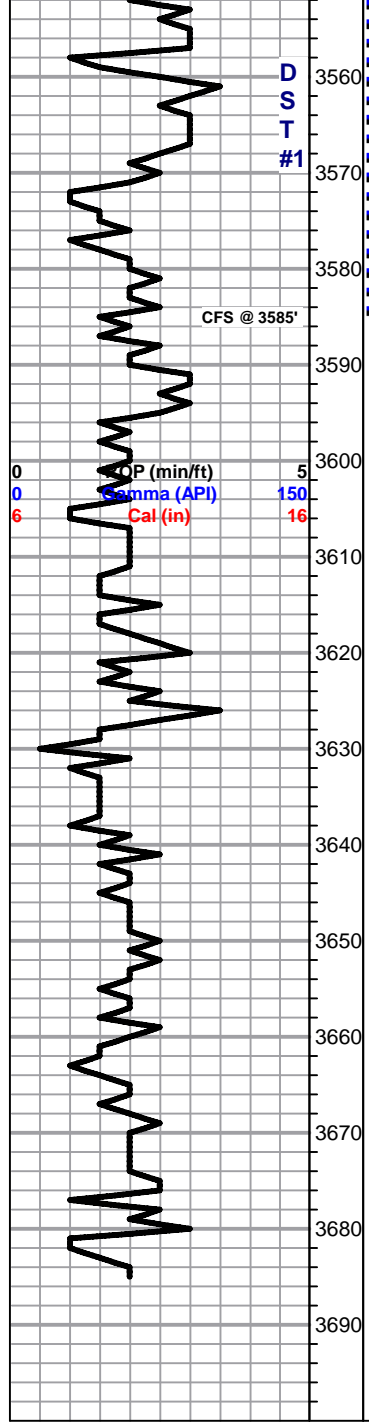
Lm- White, FXLN, fsl & loosely cemented, chalky in part, sctrd fn ppt & XLN porosity, LT SCTRD STN, NSFO, TR ODR

LKC 3546' (-1445) E-LOG 3547' (-1446) Sh- Maroon Gray, gritty & earthy, argillaceous clumps

SHORT TRIP
CTCH
SURVEY 3/4 deg.

DST #1
ARBUCKLE
2540' - 2595'

3340 - 3585
30-30-30-30
320' TOTAL FLUID
60' MWCO
(70%O, 10%W, 20%
M)
100' MCO
(60%O, 40%M)
160' CLEAN OIL
IFP: 25-97#
FFP: 100-134#
SIP: 269-266#



Lm- Tan Cream, unconsolidated oolitic trashy Lm, dense, poor vis. porosity

ARBUCKLE 3570' (-1469) E-LOG 3573' (-1472) Dolomite- White, VFXLN, loosely cemented & crumbly, limey dolomite, bone white, pristine & barren

- Dol- Tan Cream, FXLN, mod well dev. w/ sctrd ppt porosity, LT SCTRDR STN, SHW FREE OIL, GD SULPHURIC ODR, few pcs of fresh bedded oolitic chert w/o porosity
- Dol- Cream Tan, FXLN, well dev. w/ consistent XLN porosity, semi sucrosic, SUB SAT - SAT LT STN, SHW FRO, GD ODR
- Dol- Cream Tan White, FXLN mix of dense, well cemented, tight w/ micro XLN, mostly barren, several pcs of cherty white dolomite w/ min. vis. porosity, barren
- Dol- Tan, F-MEDXLN, dnse, loosely cemented & well dev. sucrosic in part, SUB-SAT-SAT STN, WK SHW FO, GD ODR
- D Dol/Chert- Mix of white & cream, med XLN & well dev. sucrosic in part, SAT BLK RESIDUAL DEAD OIL STN, NSFO, GD ODR, pristine & barren bone white cherty dolomite
- Dol- Off White, VF-FXLN, dense, tight w/ micro XLN porosity, barren, several pcs of clear fresh bedded chert
- Dol- A/A, few pcs of salmon fresh bedded chert
- Dol- Tan Lt Pink, FXLN, dense, well dev. w/ consistent XLN porosity, barren, several pcs of white cherty dolomite/dolomitic chert, all barren
- Dol- Cream, VF-FXLN, dense, well cemented, mostly tight w/ micro XLN porosity, barren
- Chert- Milky White Lt Gray, semi-translucent, unconsolidated w/ sub-rounded med grn qtz, inclusions, no vis. porosity, barren

RTD 3685' (-1584) LTD 3688' (-1587) @ 06:00 4/2/2018