



**TRILOBITE
TESTING, INC.**

DRILL STEM TEST REPORT

Great Plains Energy Inc
6121 S 58th ST Ste B
Lincoln NE 68516
ATTN: Rich Bell

29 3s 26w Decatur KS

Votapka A 1

Job Ticket: 64513

DST#: 3

Test Start: 2018.03.07 @ 12:22:00

GENERAL INFORMATION:

Formation: **LKC " J K & L "**
 Deviated: No Whipstock: ft (KB)
 Time Tool Opened: 14:17:46
 Time Test Ended: 20:28:00
 Interval: **3707.00 ft (KB) To 3783.00 ft (KB) (TVD)**
 Total Depth: 3783.00 ft (KB) (TVD)
 Hole Diameter: 7.88 inches Hole Condition: Fair
 Test Type: Conventional Bottom Hole (Reset)
 Tester: Jim Svaty
 Unit No: 76
 Reference Elevations: 2588.00 ft (KB)
 2583.00 ft (CF)
 KB to GR/CF: 5.00 ft

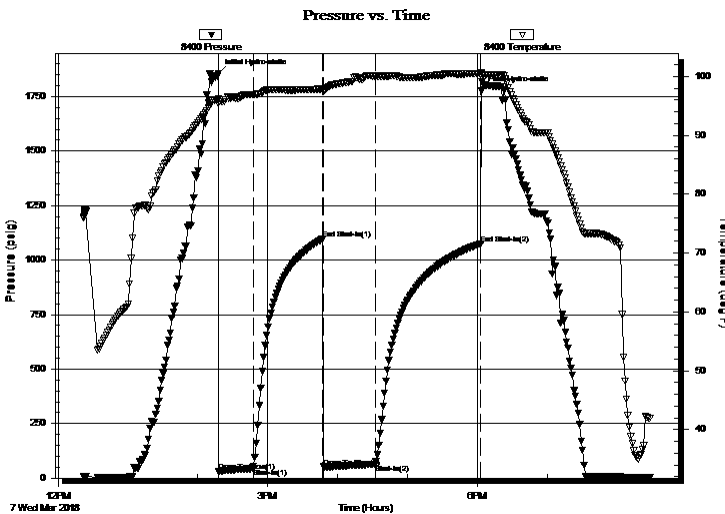
Serial #: 8400

Outside

Press@RunDepth: 63.42 psig @ 3714.00 ft (KB)
 Start Date: 2018.03.07 End Date: 2018.03.07
 Start Time: 12:22:01 End Time: 20:27:46
 Capacity: 8000.00 psig
 Last Calib.: 2018.03.07
 Time On Btm: 2018.03.07 @ 14:17:31
 Time Off Btm: 2018.03.07 @ 18:03:16

TEST COMMENT: 30-IFP- Surface Blow Building to 2 1/2in.
 60-ISIP- No Blow
 45-FFP- Surface Blow
 90-FSIP- No Blow

PRESSURE SUMMARY



Time (Min.)	Pressure (psig)	Temp (deg F)	Annotation
0	1855.63	96.16	Initial Hydro-static
1	31.29	95.36	Open To Flow (1)
30	43.92	96.92	Shut-In(1)
90	1095.96	97.88	End Shut-In(1)
91	51.12	97.55	Open To Flow (2)
135	63.42	100.07	Shut-In(2)
226	1075.23	100.45	End Shut-In(2)
226	1775.26	100.70	Final Hydro-static

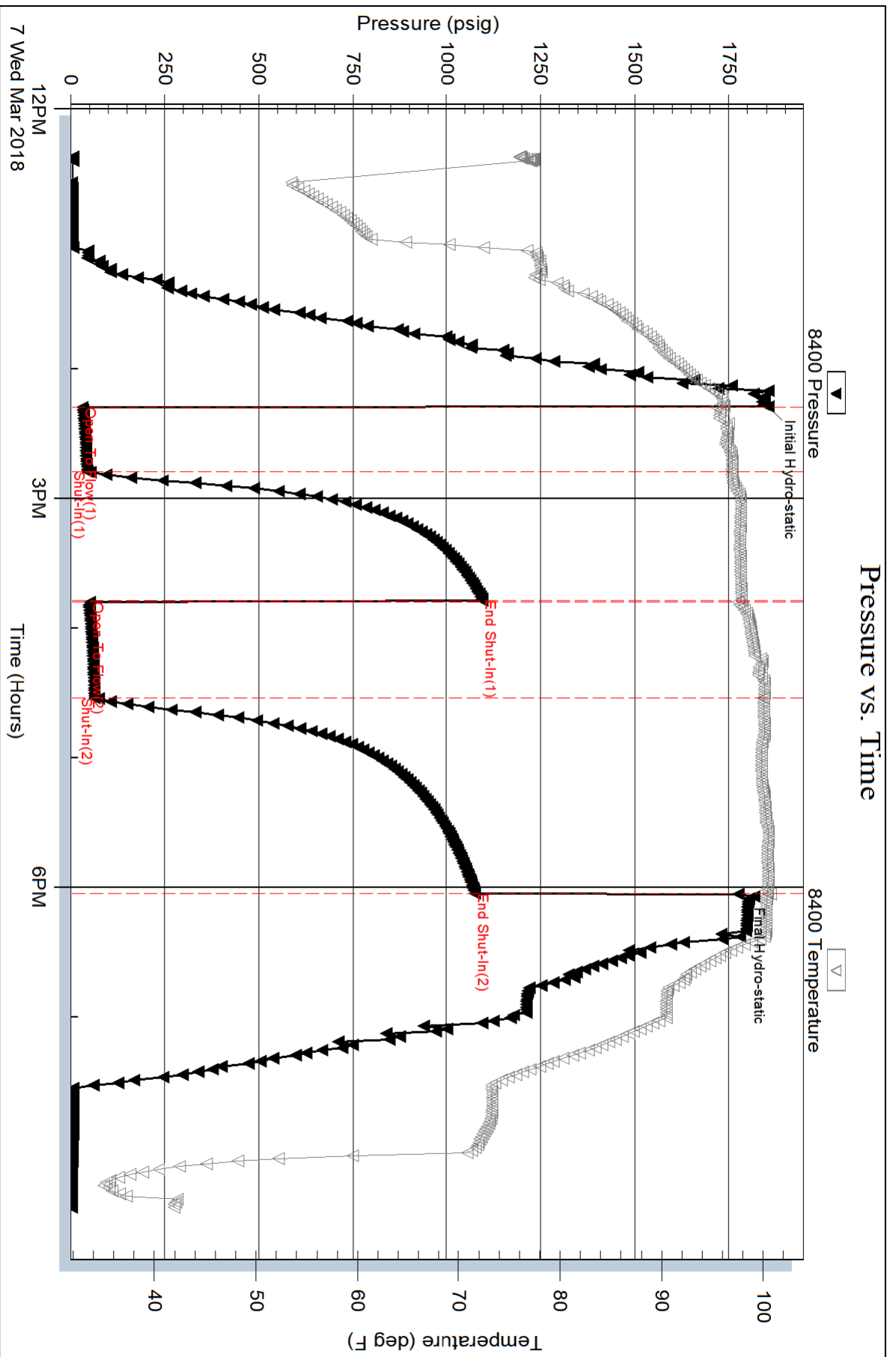
Recovery

Length (ft)	Description	Volume (bbl)
65.00	Mud 100%	0.32

* Recovery from multiple tests

Gas Rates

Choke (inches)	Pressure (psig)	Gas Rate (Mcf/d)



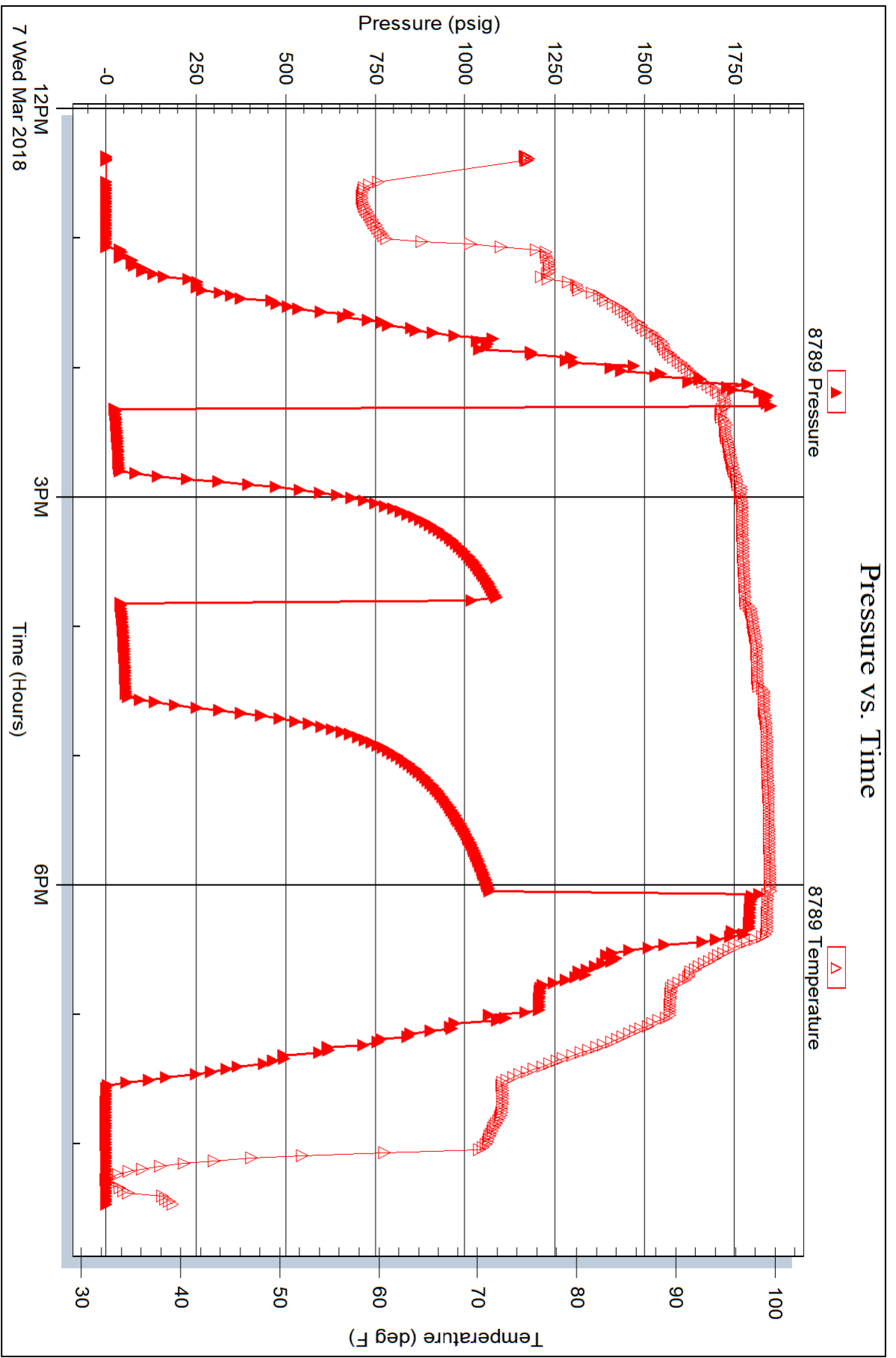
Serial #: 8789

Inside

Great Plains Energy Inc

Votapka A 1

DST Test Number: 3



Triobite Testing, Inc

Ref. No: 64513

Printed: 2018.03.07 @ 21:23:45