

Company: Dixon Operating Company, LLC  
 Address: 8100 E 22nd St N #300 Wichita, KS 67226

Contact Geologist: #1-9 Salem  
 Contact Phone Nbr: Section 9-23S-12W  
 Well Name: APL: 15-185-24021  
 Location: Field: Rattlesnake Creek  
 Pool: Country: USA  
 State: Kansas

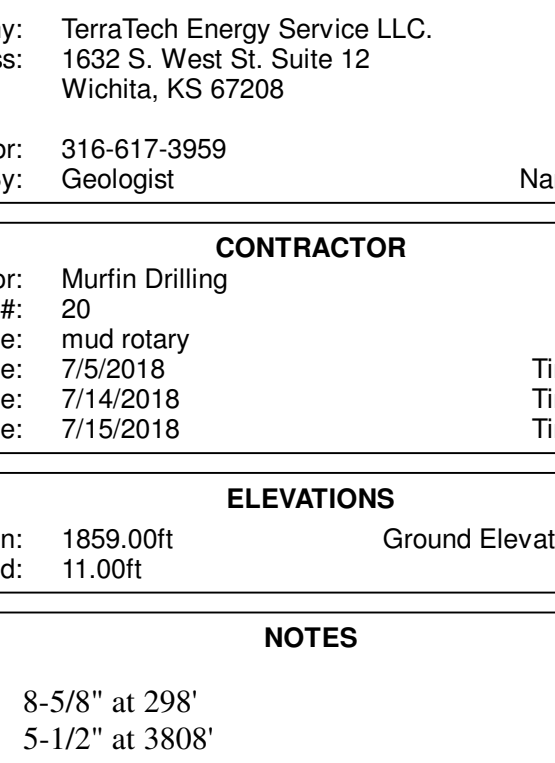
**OPERATOR**  
 Dixon Operating Company, LLC

Scale 1:240 Imperial  
 Well Name: #1-9 Salem  
 Surface Location: Section 9-23S-12W  
 Bottom Location: APL: 15-185-24021  
 License Number: 7/5/2018 Time: 6:00 PM  
 Spud Date: Stafford Region: 7/14/2018 Time: 5:15 AM  
 Drilling Completed: 4290' FSL & 3630' FEL  
 Surface Coordinates: 1848.00ft  
 Bottom Hole Coordinates: K.B. Elevation: 1859.00ft  
 Ground Elevation: 1848.00ft  
 Logged Interval: 2800.00ft To: 3810.00ft  
 Total Depth: 3810.00ft  
 Formation:  
 Drilling Fluid Type: Chemical (Mud Co)

**SURFACE CO-ORDINATES**

Well Type: Vertical  
 Longitude: 4290' FSL  
 N/S Co-ord: 3630' FEL  
 E/W Co-ord: Latitude:

**LOGGED BY**



Company: TerraTech Energy Service LLC.  
 Address: 1632 S. West St. Suite 12  
 Wichita, KS 67208  
 Phone Nbr: 316-617-3959  
 Logged By: Geologist Name: Bruce Reed

**CONTRACTOR**

Contractor: Murfin Drilling  
 Rig #: 20  
 Rig Type: mud rotary  
 Spud Date: 7/5/2018 Time: 6:00 PM  
 TD Date: 7/14/2018 Time: 5:15 AM  
 Rig Release: 7/15/2018 Time: 6:00 AM

**ELEVATIONS**

K.B. Elevation: 1859.00ft  
 K.B. to Ground: 11.00ft  
 Ground Elevation: 1848.00ft

**NOTES**

Surface Casing: 8-5/8" at 298'  
 Production Casing: 5-1/2" at 3808'

Daily Penetration:  
 07/05/18 Spud @ 6:00 PM  
 07/06/18 310'  
 07/07/18 730'  
 07/08/18 1875'  
 07/09/18 3100'  
 07/10/18 3426'  
 07/11/18 3526'  
 07/12/18 3594'  
 07/13/18 3741'  
 07/14/18 3810' Drilling completed @ 5:15 AM  
 07/15/18 3810' Plug down @ 6:00 AM

**DRILL STEM TESTS**

DST #1 3354' to 3426' L/KC. Weak blow that built to 1-3/4 inches during the initial flow period. Weak blow that built to 1-1/2 inches during the second flow period. Recovered: 125' Drilling Mud (no shows). IFP: 30" 19-74 psi, ISIP: 30" 1058 psi, FFP: 30" 98-98 psi, FSP: 30" 1016 psi

DST #2 3466' to 3526' L/KC. Weak blow that built to 3-1/2 inches during the initial flow period. Weak blow that built to 2-1/2 inches during the second flow period. Recovered: 20' SOGCM (2% gas, 1% oil, 97% mud). IFP: 30" 16-24 psi, ISIP: 60" 98 psi, FFP: 60" 21-30 psi, FSP: 90" 110 psi

DST #3 3526' to 3580' L/KC. Weak blow that built to 2-1/2 inches during the initial flow period. Weak blow that built to 2-3/4 inches during second flow. Recovered: 20' SOCM (5% oil and 95% mud), 120' MCW (88% water, 12% mud). IFP: 30" 24-53 psi, ISIP: 60" 1060 psi, FFP: 60" 62-89 psi, FSP: 90" 1007 psi

DST #4 3686' to 3720' Simpson Sand. Weak blow that built to 2-3/4 inches during the initial flow period. Fair blow that built to BOB in 58 minutes during the second flow period. Recovered: 120' GIP, 65' GOCM (20% gas, 20% oil, 60% mud). IFP: 30" 15-26 psi, ISIP: 60" 286 psi, FFP: 60" 34-46 psi, FSP: 90" 299 psi

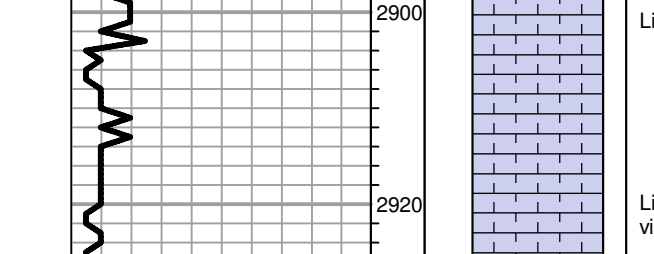
DST #5 3720' to 3741' Arbuckle. Strong blow that built to BOB in 4 minutes during the initial flow period. Strong blow that built to BOB in 6 minutes during the second flow period. Recovered: 620' GIP, 345' CGO (10% gas, 90% oil), 259' GMCO (5% gas, 90% oil, 5% mud), 182' MWCO (60% oil, 30% water 10% mud). IFP: 30" 130-213 psi, ISIP: 60" 1242 psi, FFP: 60" 219-1239 psi, FSP: 90" 1296 psi

**FORMATION TOPS**

Formation	Sample Top	Datum	Log Top	Datum	Comparison*
Heebner	3183'	-1324	3184'	-1325	-1
Brown Lime	3318'	-1459	3319'	-1460	flat
Lansing	3344'	-1485	3346'	-1487	-3
Stark	3533'	-1674	3532'	-1673	-1
Base KC	3589'	-1730	3588'	-1729	-5
Viola	3610'	-1751	3608'	-1749	-3
Simpson	3693'	-1834	3692'	-1833	-5
Simpson Sand	3709'	-1850	3707'	-1848	-4
Arbuckle	3738'	-1879	3739'	-1880	-4

\*Murfin Drilling Company, #1-9 David, 330' FNL / 1320' FEL Section 9-23S-12W, Stafford County, Kansas

**ROCK TYPES**



**ACCESSORIES**

MINERAL  
 ▲ Chert White  
 ■ Argillaceous/Shale

**OTHER SYMBOLS**

INTERVALS  
 ■ Core  
 - DST  
 ● Oil Show  
 ● Good Show  
 ● Fair Show  
 ● Poor Show  
 ○ Spotted or Trace  
 ○ Questionable Sin  
 D Dead Oil Sin  
 ■ Fluorescence  
 \* Gas  
 ■ DST Int  
 ■ DST alt  
 ■ Core  
 ■ tail pipe

Printed by GEOstrip VC Striplog version 4.0.7.0 (www.grsl.ca)

