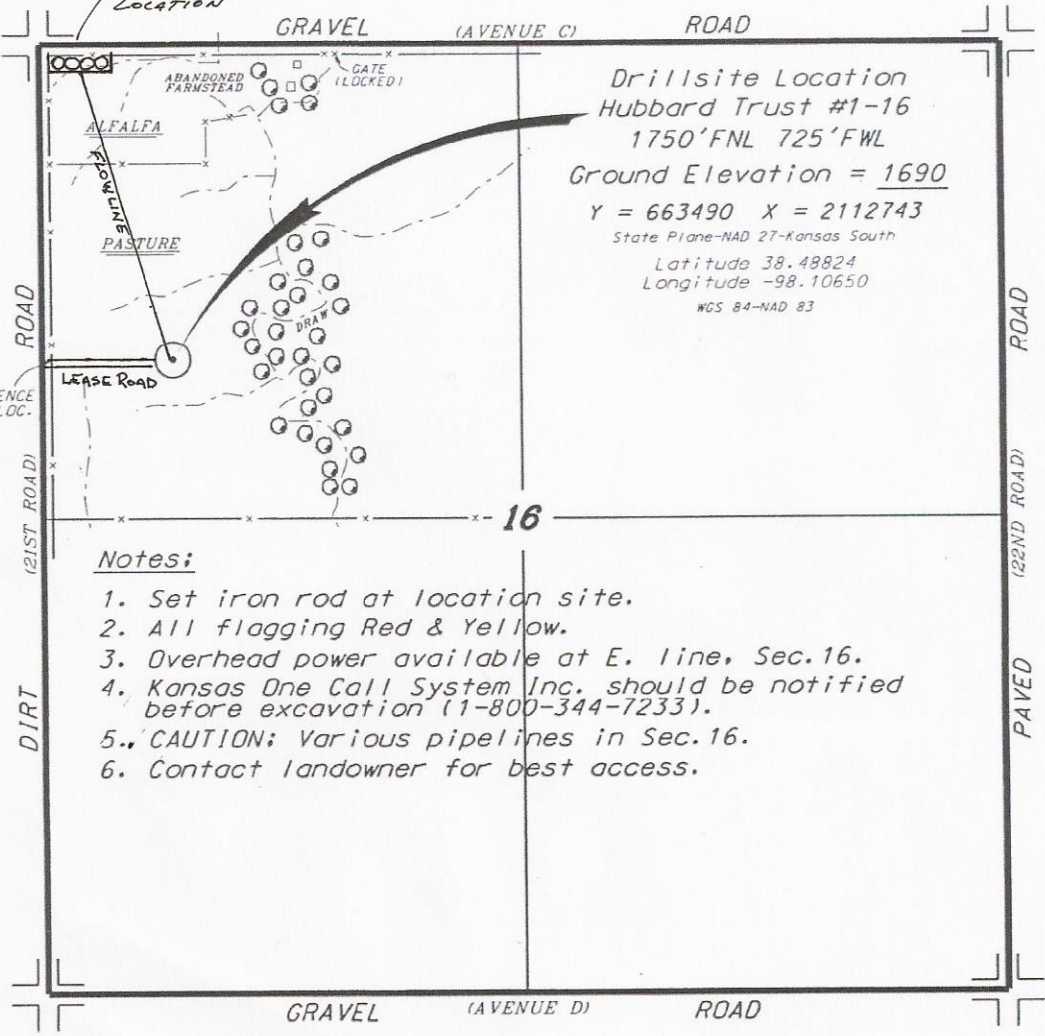


EAGLE CREEK CORPORATION  
 HUBBARD TRUST LEASE  
 NW. 1/4, SECTION 16, T18S, R7W  
 RICE COUNTY, KANSAS

PROPOSED  
 TANK BATTERY  
 LOCATION



Drillsite Location  
 Hubbard Trust #1-16  
 1750'FNL 725'FWL  
 Ground Elevation = 1690  
 Y = 663490 X = 2112743  
 State Plane-NAD 27-Kansas South  
 Latitude 38.48824  
 Longitude -98.10650  
 WGS 84-NAD 83

FLAGGED FENCE  
 OPPOSITE LOC.

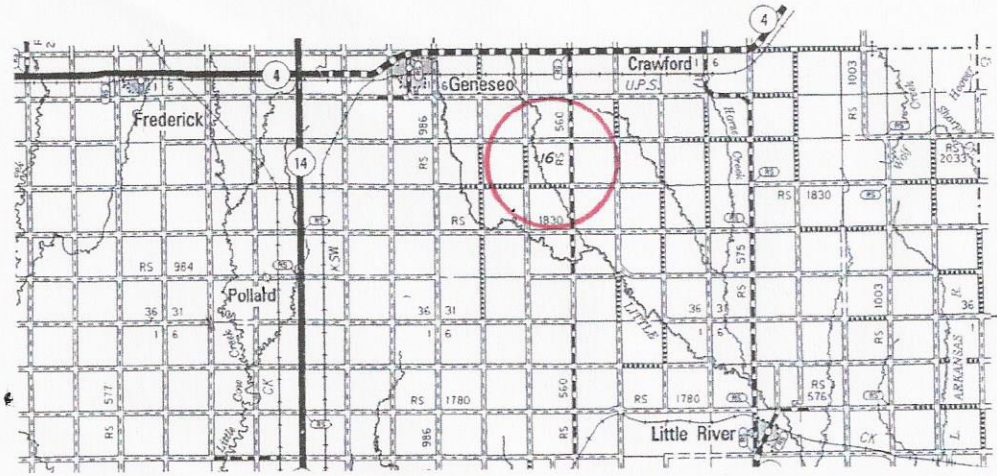
DIRT ROAD (21ST ROAD)  
 ROAD (22ND ROAD)  
 PAVED



Notes:

1. Set iron rod at location site.
2. All flagging Red & Yellow.
3. Overhead power available at E. line, Sec.16.
4. Kansas One Call System Inc. should be notified before excavation (1-800-344-7233).
5. CAUTION: Various pipelines in Sec.16.
6. Contact landowner for best access.

\* Ingress and egress to location as shown on this plat is per usage only and may not be legally opened for public use. Contact landowner, tenant and county road department for access.



\* Controlling data is based upon the best maps and photographs available to us and upon a regular section of land containing 640 acres.  
 \* Approximate section lines were determined using the normal standard of care of oilfield surveyors practicing in the state of Kansas. The section corners, which establish the precise section lines, were not necessarily located, and the exact location of the drillsite location in the section is not guaranteed. Therefore, the operator securing this service and accepting this plat and all other parties relying thereon agree to hold Central Kansas Oilfield Services, Inc., its officers and employees harmless from all losses, costs and expenses and said entities released from any liability from incidental or consequential damages.  
 \* Elevations derived from National Geodetic Vertical Datum.

Date August 17, 2018

CENTRAL KANSAS OILFIELD SERVICES, INC. (620)792-1977