

Ryan Seif
Palomino Petrol

510 N. Travis

Lawrence, KS 67320

(785) 782-8885

COMPLETION REPORT
STANDARD OIL COMPANY

Palomino Petroleum

WELL ABS # 1

SECTION 2394' FRL & 2467' FEL

SEC. 18 T. 17S R. 26W

COUNTY Ness STATE KS

OPERATOR WW Drilling Rig 14

START 8/24/16 COMP. 9/3/16

DEPT 4652' TO 4654'

DEPTH 3600' TO RTD

DEPTH 3600' TO RTD

DEPTH 3600' TO RTD

DEPTH 3500' TO ATO

DEPTH 3400' TO Chemical

NO. 15-135-25822

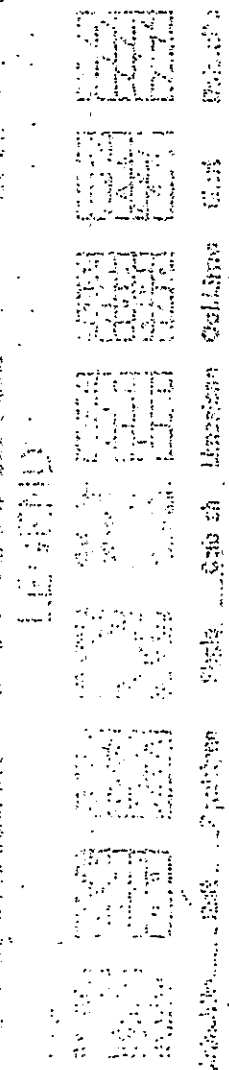
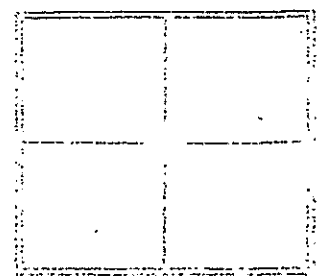
FORMER

FORMATION	DEPTH	FORMATION	DEPTH
Anhydrite	1937 (+630)	1943 (+624)	
Heabner	3892 (-1275)	3891 (-1274)	
Lansing	3880 (-1273)	3882 (-1275)	
Stack	4173 (-1566)	4123 (-1516)	
D.K.S.	4200 (-1623)	4201 (-1624)	
Macomber	4235 (-1668)	4234 (-1667)	
Parsons	4232 (-1665)	4230 (-1663)	
Ft. Scott	4399 (-1822)	4390 (-1823)	
Cherokee Sh.	4417 (-1850)	4416 (-1849)	
Miss. ss. upon Dol.	4470 (-1903)	4500 (-1933)	

SECTION
NO. 2567'
OF
G. 2556'
FROM KB

CASING RECORD
DIP 8 5/8" @
219'
CONDUIT 5 1/2"

CND, DIL,
Micro, PE



SCALE = 100'

Log on hand, v. G. - G. x 1/2
8/25/16, P. n. D. S.

3600
- 10

REFERENCE WILL BE MADE TO THE ORIGINAL COMPLETION REPORT

3600
15.50/12.281, v. fa. - f. x. h.
p. n. B. 1. 1. 1.

10
20

30
40
50
60
70
80
90
3700

Nut ✓ @ 3651
wt. - 8.9
vis. - 4.6
WL - 8.8
CIL - 3,100
Lcm - I#

10
20
30
40
50
60
70
80
90
3700

10
20
30
40
50
60
70
80
90
3700

10
20
30
40
50
60
70
80
90
3700

10
20
30
40
50
60
70
80
90
3700

10
20
30
40
50
60
70
80
90
3700

10
20
30
40
50
60
70
80
90
3700

10
20
30
40
50
60
70
80
90
3700

15. AM, n/15

St. BLK Carb

10
20
30
40
50
60
70
80
90
3700

St. Mac color

Heckart 3841
(12-74)

Ryan Selb
Petroleum Geologist

815 S. Tealoka

Ness City, KS 67560

(785) 783-5308

GEOLOGIST'S REPORT
DRILLING TIME AND SAMPLE LOG

OPERATOR Palomino Petroleum
LEASE Baker HA Unit #1
FIELD _____
LOCATION 573' FNL + 2553' FNL
SEC. 4 TWP. 16S RGE 25W
COUNTY Wichita STATE KS

CONTRACTOR LV Rig #20
COORD. 7/15/16 COMP. 7/29/16
HOLE NO. 4835 LGS TO 4824
SAMPLES SAVED FROM 3500' TO RTD
HOLELOG TIME WENT FROM 3500' TO RTD
SAMPLES SAVED FROM 3500' TO RTD
GEOLOGICAL SUPERVISOR FROM 3400' TO RTD
LGS UP 3500' TYPE AND Chemical
NO. 15-203-20308

FORMATION	LOG	DATE	TOP	DATE	DEPTH
Anhydrite	3507 (-709)	3512 (-699)			
Hecles	3977 (-761)	3989 (-773)			
Tocant	3998 (-782)	4012 (-794)			
Lansing	4024 (-808)	4038 (-822)			
Stark	4085 (-1069)	4301 (-1095)			
STRC	4374 (-1158)	4385 (-1169)			
Morrison	4419 (-1203)	4431 (-1215)			
Lawrence	4509 (-1293)	4519 (-1303)			
El Scott	4565 (-1341)	4570 (-1354)			
Mississippian	4772 (-1556)	4785 (-1569)			

ELEVATION

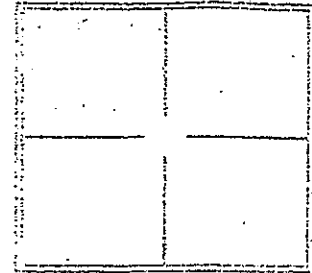
3216'
3197'
Measurements Are All
From KB

CASING RECORD

SIZE 8 5/8" @
232'
THICKNESS 5 1/2"

WELL LOG SURVEYS

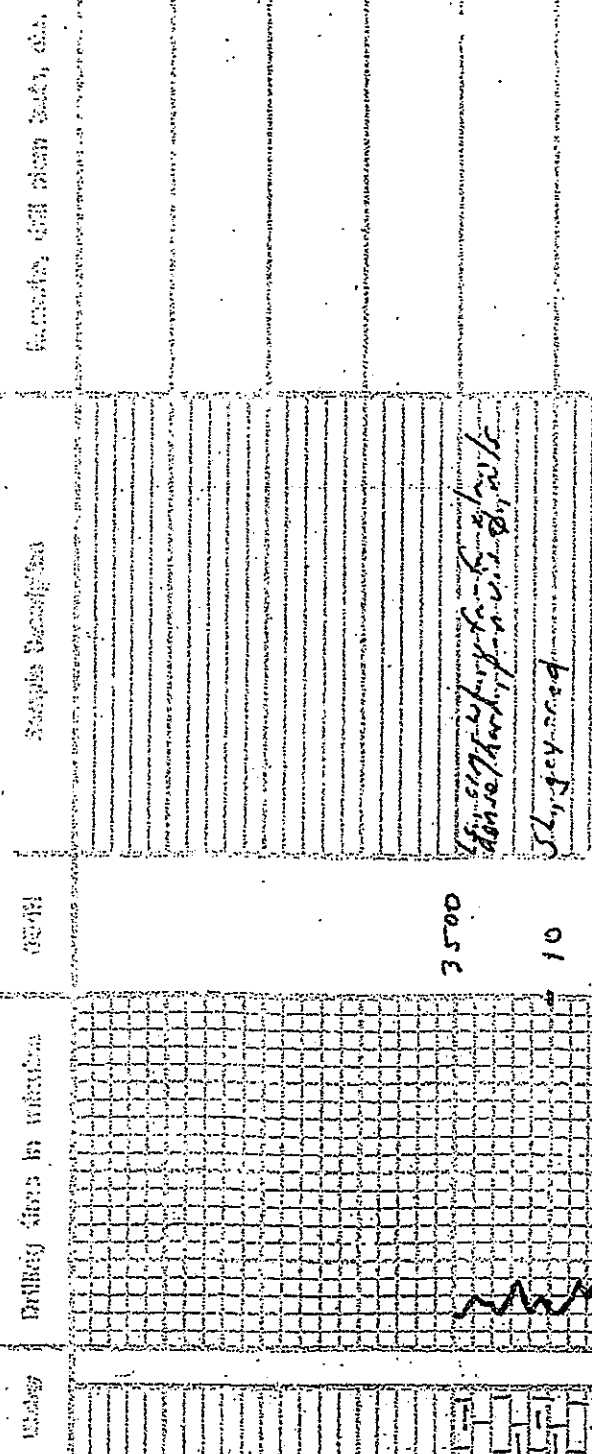
CND, DIL, Micro,
PE



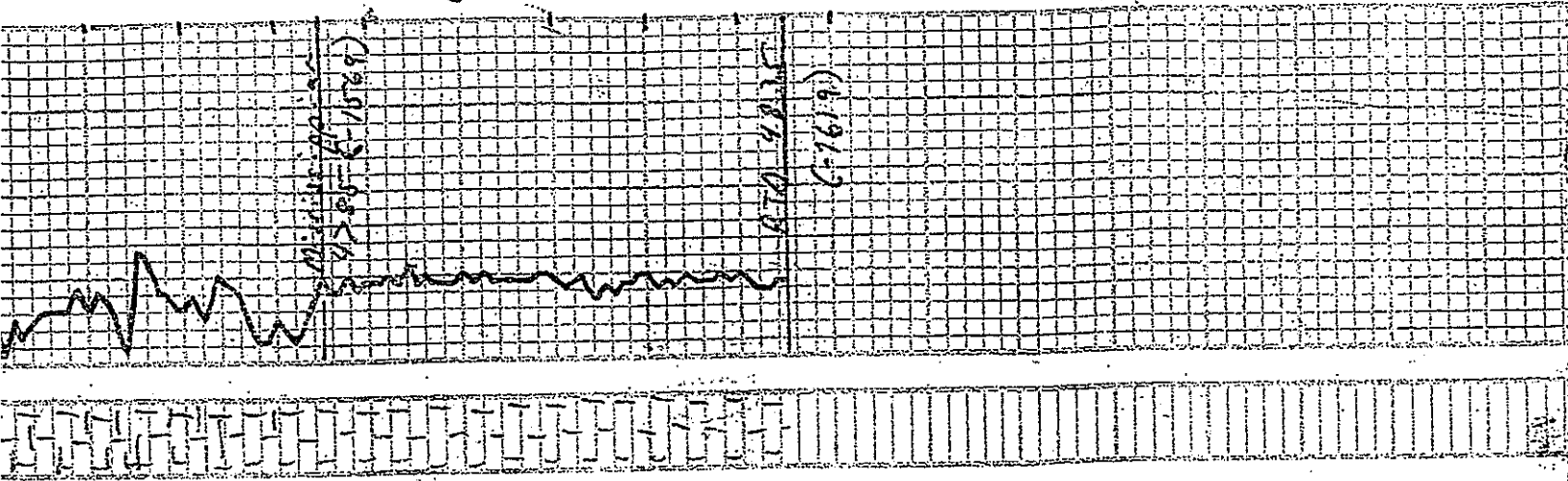
LEGEND

- Anhydrite
- Gypsum
- Salt
- Sandstone
- Sandstone with shale
- Sandstone with shale and siltstone
- Sandstone with shale and siltstone and claystone
- Sandstone with shale and siltstone and claystone and shale
- Sandstone with shale and siltstone and claystone and shale and siltstone
- Sandstone with shale and siltstone and claystone and shale and siltstone and claystone
- Sandstone with shale and siltstone and claystone and shale and siltstone and claystone and shale
- Sandstone with shale and siltstone and claystone and shale and siltstone and claystone and shale and siltstone
- Sandstone with shale and siltstone and claystone and shale and siltstone and claystone and shale and siltstone and claystone
- Sandstone with shale and siltstone and claystone and shale and siltstone and claystone and shale and siltstone and claystone and shale
- Sandstone with shale and siltstone and claystone and shale and siltstone and claystone and shale and siltstone and claystone and shale and siltstone
- Sandstone with shale and siltstone and claystone and shale and siltstone and claystone and shale and siltstone and claystone and shale and siltstone and claystone
- Sandstone with shale and siltstone and claystone and shale and siltstone and claystone and shale and siltstone and claystone and shale and siltstone and claystone and shale

SCALE 1" = 100'



REVERSE WELL FOR SURVEYAL COMPANY



60	25, AA
70	36, AA
80	
90	Highly sandy, R. pink, dense / hard, sandy, 100% fill
4800	
10	Highly sandy, R. pink, dense / hard, sandy, 100% fill
20	
30	Highly sandy, R. pink, dense / hard, sandy, 100% fill
40	
50	