

VAL ENERGY INC

OPERATOR

1-30

NO.

FEASTER V OWWO

FARM

COWLEY

COUNTY

30

S

32s

T

6e

R

2230' FSL & 2505' FEL of Sec.

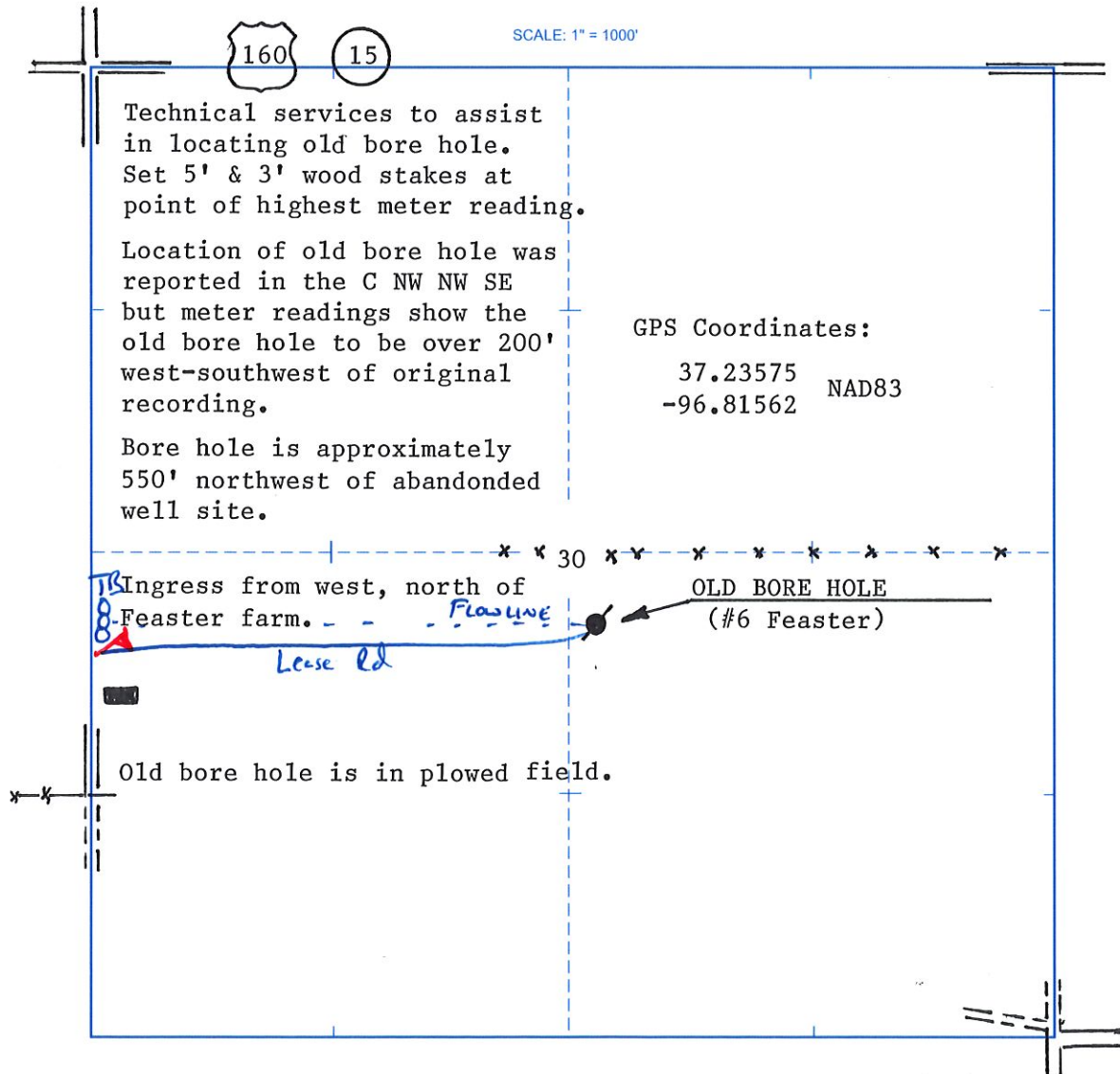
LOCATION

ELEVATION: 1223' GR



VAL ENERGY INC.
125 N Market, Ste 1110
Wichita, KS 67202

AUTHORIZED BY: Todd Allam



Technical services to assist in locating old bore hole. Set 5' & 3' wood stakes at point of highest meter reading.

Location of old bore hole was reported in the C NW NW SE but meter readings show the old bore hole to be over 200' west-southwest of original recording.

Bore hole is approximately 550' northwest of abandoned well site.

GPS Coordinates:
37.23575 NAD83
-96.81562

Ingress from west, north of Feaster farm. - - - - - *FLASING* OLD BORE HOLE (#6 Feaster)

Old bore hole is in plowed field.

DATE STAKED: 7/23/18