

Fall & Associates
 Stake and Elevation Service
 P.O. Box 222
 Pretty Prairie, KS. 67570
 785-243-7506

Date 8-29-19

Invoice Number 0823182

MURFIN DRILLING

1-22

Gamblin

Operator

Number

Farm Name

Cheyenne-Ks

22

2s

37w

2310'FNL 1805'FWL

County-State

S

T

R

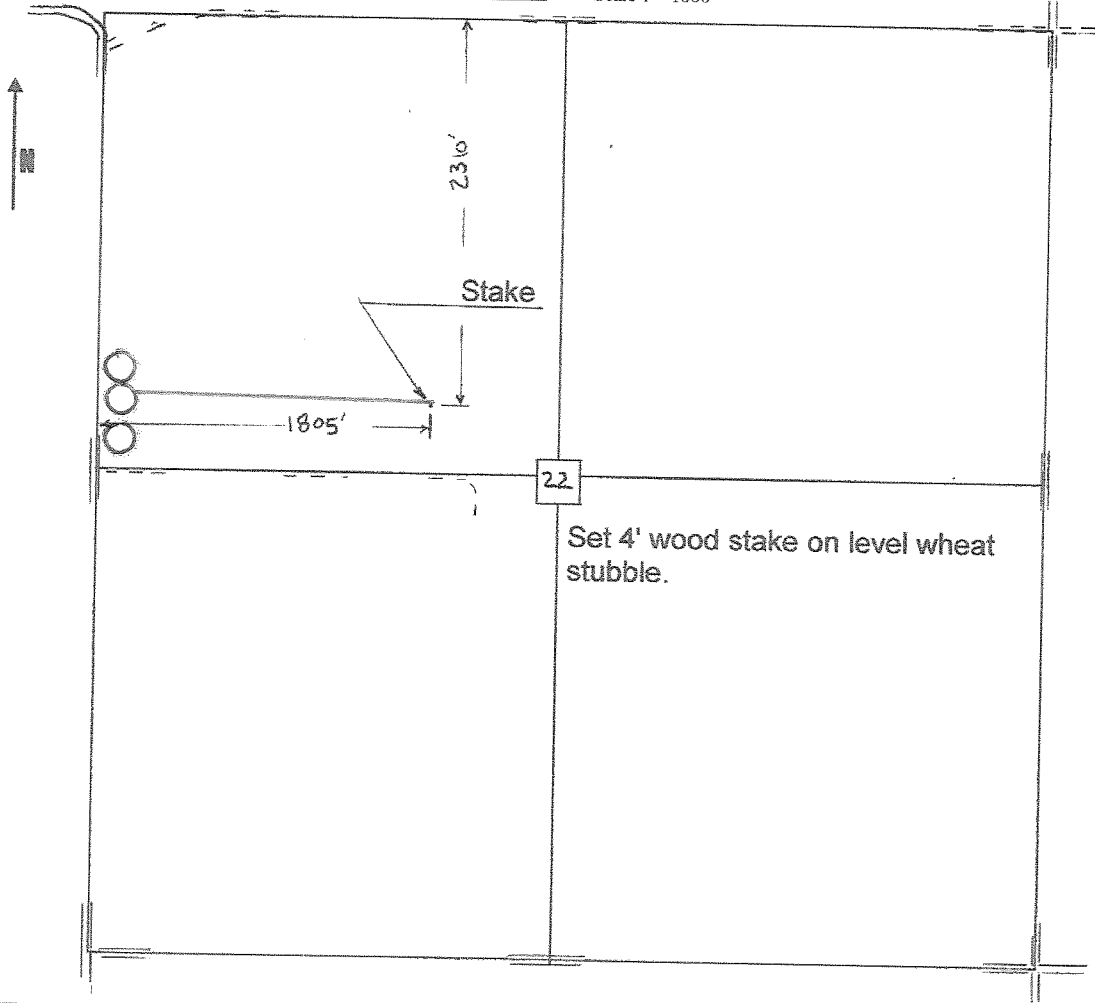
Location

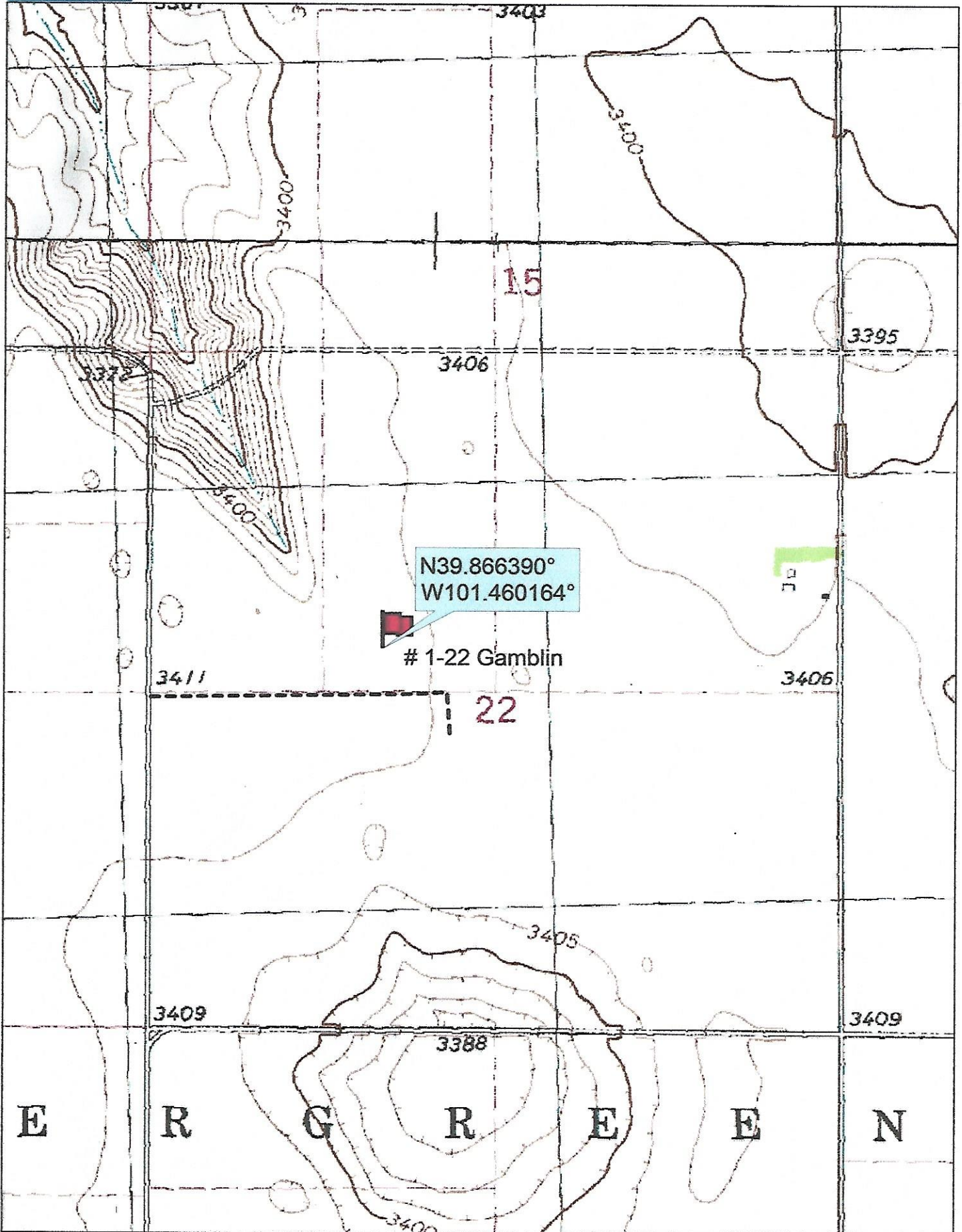
Murfin Drilling
 250 N. Water
 Suite 300
 Wichita, KS. 67202

Elevation 3410 Gr.

Ordered By: Shauna

Scale 1"=1000'





Data use subject to license.

© DeLorme. Topo North America™ 9.

www.delorme.com

