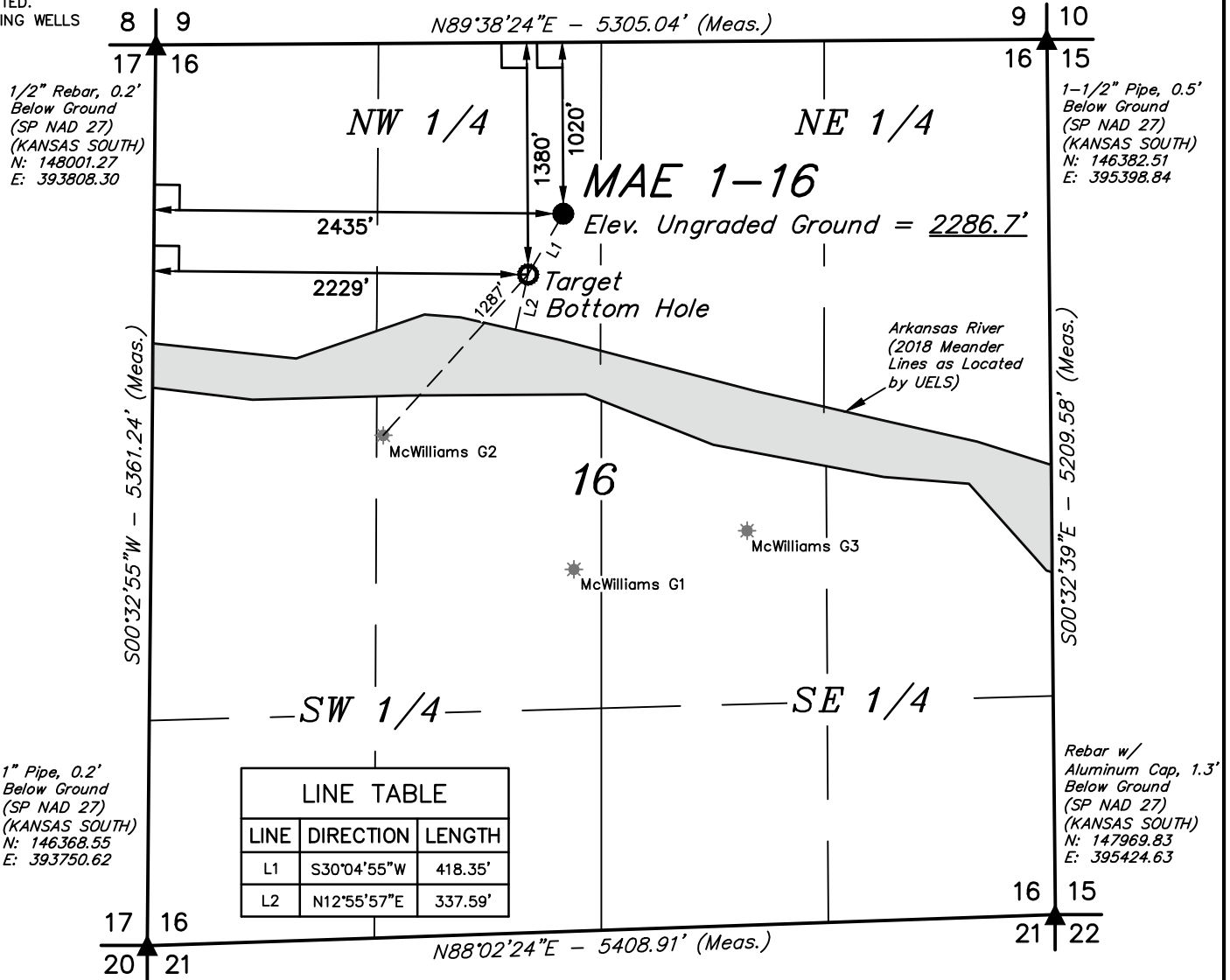


T24S, R33W, 6th P.M.

LEGEND:

- └─┘ = 90° SYMBOL
- = PROPOSED WELLHEAD.
- = TARGET BOTTOM HOLE.
- ▲ = SECTION CORNERS LOCATED.
- ★ = EXISTING WELLS



LINE TABLE		
LINE	DIRECTION	LENGTH
L1	S30°04'55\"W	418.35'
L2	N12°55'57\"E	337.59'



CERTIFICATE

THIS IS TO CERTIFY THAT THE ABOVE PLAT WAS PREPARED FROM FIELD NOTES OF ACTUAL SURVEYS MADE BY ME OR UNDER MY SUPERVISION AND THAT THE SAME ARE TRUE AND CORRECT TO THE BEST OF MY KNOWLEDGE AND BELIEF.



NAD 83 (SURFACE LOCATION)	NAD 83 (TARGET BOTTOM HOLE)
LATITUDE = 37°58'18.76" (37.971878)	LATITUDE = 37°58'15.18" (37.970883)
LONGITUDE = 100°56'54.35" (100.948430)	LONGITUDE = 100°56'56.97" (100.949157)
NAD 27 (SURFACE LOCATION)	NAD 27 (TARGET BOTTOM HOLE)
LATITUDE = 37°58'18.67" (37.971854)	LATITUDE = 37°58'15.09" (37.970860)
LONGITUDE = 100°56'52.76" (100.947988)	LONGITUDE = 100°56'55.37" (100.948714)
STATE PLANE NAD 83 (KANSAS SOUTH)	STATE PLANE NAD 83 (KANSAS SOUTH)
N: 1796857.22 E: 606641.35	N: 1796500.81 E: 606422.45
STATE PLANE NAD 27 (KANSAS SOUTH)	STATE PLANE NAD 27 (KANSAS SOUTH)
N: 484501.24 E: 1294417.71	N: 484144.83 E: 1294198.81

REV: 1 08-02-18 J.J. (LLH TABLE UPDATE)

BASIS OF BEARINGS
BASIS OF BEARINGS IS A G.P.S. OBSERVATION

BASIS OF ELEVATION
ELEVATION 2848.98' WAS DERIVED FROM AN OPUS SOLUTION AT
LAT: 37°58'08.99" LONG: 100°54'04.80" AND HAS A DATUM OF NAVD88.



MERIT ENERGY COMPANY

MAE 1-16
1020' FNL 2435' FWL
NW 1/4, SECTION 16, T24S, R33W, 6th P.M.
FINNEY COUNTY, KANSAS

SURVEYED BY	B.L.	07-13-18	SCALE
DRAWN BY	C.M.T.	07-23-18	1" = 1000'

WELL LOCATION PLAT



UELS, LLC
Corporate Office * 85 South 200 East
Vernal, UT 84078 * (435) 789-1017