

KANSAS CORPORATION COMMISSION
OIL & GAS CONSERVATION DIVISION

TEMPORARY ABANDONMENT WELL APPLICATION

OPERATOR: License#
Name:
Address 1:
Address 2:
City: State: Zip:
Contact Person:
Phone:
Contact Person Email:
Field Contact Person:
Field Contact Person Phone:

API No. 15-
Spot Description:
Sec. Twp. S. R.
GPS Location: Lat: Long:
Datum: NAD27 NAD83 WGS84
County: Elevation:
Lease Name: Well #:
Well Type: Oil Gas OG WSW Other:
SWD Permit #: ENHR Permit #:
Gas Storage Permit #:
Spud Date: Date Shut-In:

Table with 7 columns: Conductor, Surface, Production, Intermediate, Liner, Tubing. Rows include Size, Setting Depth, Amount of Cement, Top of Cement, Bottom of Cement.

Casing Fluid Level from Surface: How Determined? Date:
Casing Squeeze(s): to w / sacks of cement, to w / sacks of cement. Date:
Do you have a valid Oil & Gas Lease? Yes No
Depth and Type: Junk in Hole at Tools in Hole at Casing Leaks: Yes No Depth of casing leak(s):
Type Completion: ALT. I ALT. II Depth of: DV Tool: w / sacks of cement Port Collar: w / sack of cement
Packer Type: Size: Inch Set at: Feet
Total Depth: Plug Back Depth: Plug Back Method:

Geological Data:

Table with 4 columns: Formation Name, Formation Top, Formation Base, Completion Information. Rows 1 and 2.

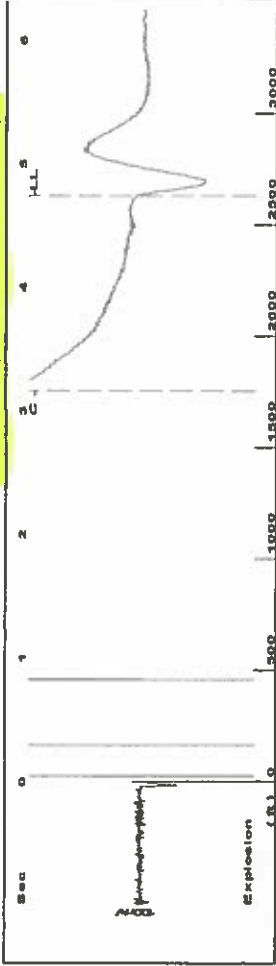
UNDER PENALTY OF PERJURY I HEREBY ATTEST THAT THE INFORMATION CONTAINED HEREIN IS TRUE AND CORRECT TO THE BEST OF MY KNOWLEDGE

Submitted Electronically

Do NOT Write in This Space - KCC USE ONLY
Date Tested: Results: Date Plugged: Date Repaired: Date Put Back in Service:
Review Completed by: Comments:
TA Approved: Yes Denied Date:

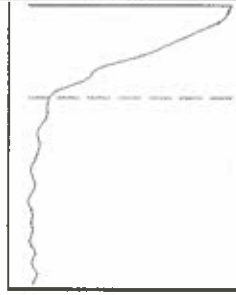
Mail to the Appropriate KCC Conservation Office:

Map of Kansas with 4 numbered districts. Table with 2 columns: Office Address, Phone Number. Rows 1-4.



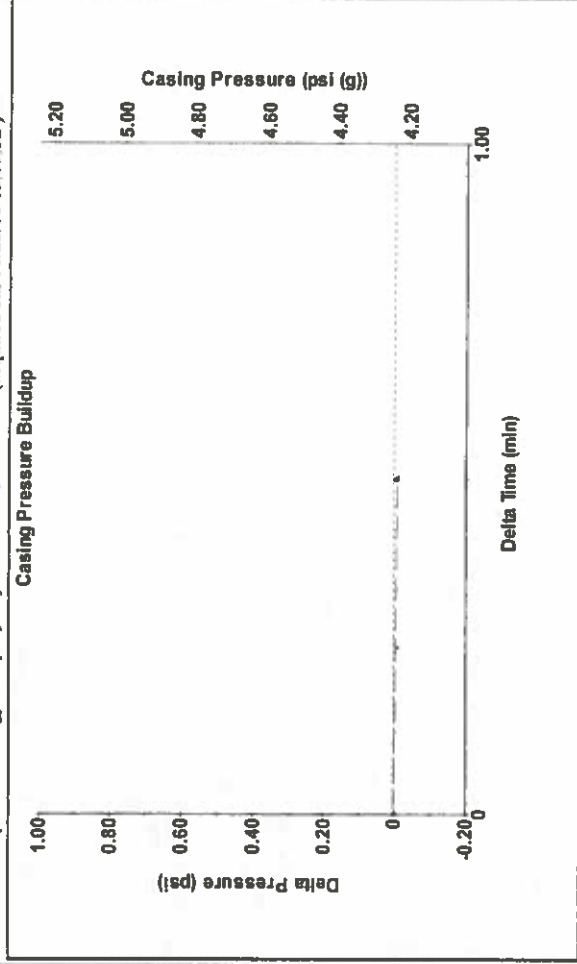
Filler Type High Pass Automatic Collar Count Yes Time 4742 sec
 Manual Acoustic Veloc 1093.1 ft/s Manual JTS/Sec 17.2414 Joints 82.9504 Jts
 Depth 2629.53 ft

[0.5 to 1.5 (Sec)]

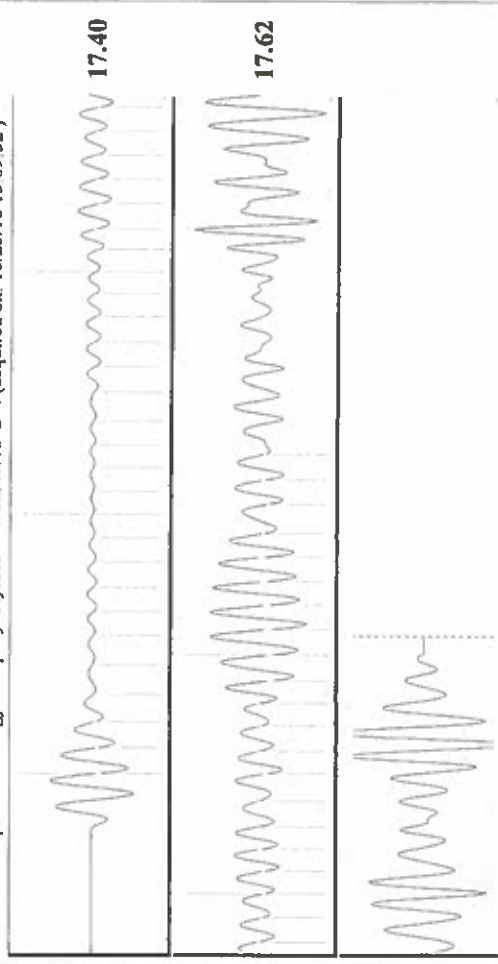


Analysis Method: Automatic

Production Current	Potential	Casing Pressure	Producing
Oil -*- BBL/D	-*- BBL/D	4.2 psi (g)	Annular Gas Flow 0 Mscf/D
Water -*- BBL/D	-*- BBL/D	Casing Pressure Buildup	% Liquid 100 %
Gas -*- Mscf/D	-*- Mscf/D	-0.009 psi	
IPR Method	Vogel	0.50 min	
PBHP/SBHP	-*-	Gas/Liquid Interface Pressure	
Production Efficiency	0.0	5.8 psi (g)	
Oil 40 deg.API		Liquid Level Depth	
Water 1.05 Sp.Gr.H2O		2629.53 ft	
Gas 0.88 Sp.Gr.AIR		Pump Intake Depth	
Acoustic Velocity 1109.04 ft/s		2997.00 ft	
		Formation Depth	
		2954.00 ft	
Formation Submergence			
Total Gaseous Liquid Column HT (TVD)		367 ft	
Equivalent Gas Free Liquid HT (TVD)		367 ft	
Acoustic Test			
Tim Frydendall-Fluid Level Technician			



Change in Pressure -0.01 psi PT9522 Range
 Change in Time 0.50 min 0 - ? psi



Acoustic Velocity 1109.04 ft/s Joints counted 48
 Joints Per Second 17.4927 jts/sec Joints to liquid level 82.9504
 Depth to liquid level 2629.53 ft Filter Width 15.2414
 Automatic Collar Count Yes Time to 1st Collar 0.42 19.2414 3.164

STATE OF KANSAS

CORPORATION COMMISSION
CONSERVATION DIVISION
DISTRICT No. 1
210 E. FRONTVIEW, SUITE A
DODGE CITY, KS 67801



PHONE: 620-682-7933
<http://kcc.ks.gov/>

GOVERNOR JEFF COLYER, M.D.

SHARI FEIST ALBRECHT, CHAIR | JAY SCOTT EMLER, COMMISSIONER | DWIGHT D. KEEN, COMMISSIONER

October 30, 2018

Katherine McClurkan
Merit Energy Company, LLC
13727 Noel Road, Suite 1200
Dallas, TX 75240

Re: Temporary Abandonment
API 15-067-21593-00-00
Reed D 4
NW/4 Sec.31-28S-35W
Grant County, Kansas

Dear Katherine McClurkan:

"Your temporary abandonment (TA) application for the well listed above has been approved. In accordance with K.A.R. 82-3-111 the TA status of this well will expire 10/30/2019.

- * If you return this well to service or plug it, please notify the District Office.
- * If you sell this well you are required to file a Transfer of Operator form, T-1.
- * If the well will remain temporarily abandoned, you must submit a new TA application, CP-111, before 10/30/2019.

You may contact me at the number above if you have questions.

Very truly yours,

Michael Maier"