

KANSAS CORPORATION COMMISSION
OIL & GAS CONSERVATION DIVISION

TEMPORARY ABANDONMENT WELL APPLICATION

OPERATOR: License#
Name:
Address 1:
Address 2:
City: State: Zip:
Contact Person:
Phone:
Contact Person Email:
Field Contact Person:
Field Contact Person Phone:

API No. 15-
Spot Description:
Sec. Twp. S. R.
GPS Location: Lat: Long:
Datum: NAD27 NAD83 WGS84
County: Elevation:
Lease Name: Well #:
Well Type: Oil Gas OG WSW Other:
SWD Permit #: ENHR Permit #:
Gas Storage Permit #:
Spud Date: Date Shut-In:

Table with 7 columns: Conductor, Surface, Production, Intermediate, Liner, Tubing. Rows include Size, Setting Depth, Amount of Cement, Top of Cement, Bottom of Cement.

Casing Fluid Level from Surface: How Determined? Date:
Casing Squeeze(s): to w / sacks of cement, to w / sacks of cement. Date:
Do you have a valid Oil & Gas Lease? Yes No
Depth and Type: Junk in Hole at Tools in Hole at Casing Leaks: Yes No Depth of casing leak(s):
Type Completion: ALT. I ALT. II Depth of: DV Tool: w / sacks of cement Port Collar: w / sack of cement
Packer Type: Size: Inch Set at: Feet
Total Depth: Plug Back Depth: Plug Back Method:

Geological Date:

Table with 4 columns: Formation Name, Formation Top, Formation Base, Completion Information. Rows 1 and 2.

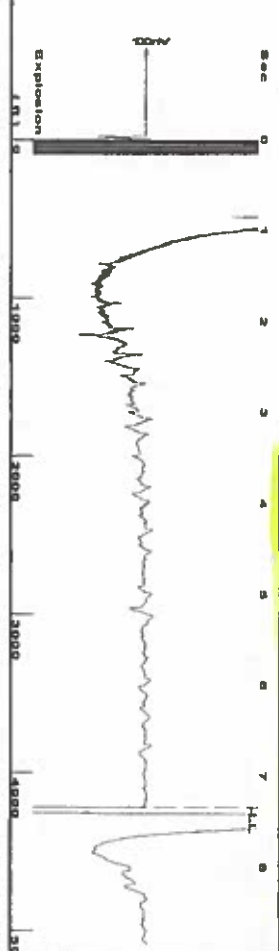
UNDER PENALTY OF PERJURY I HEREBY ATTEST THAT THE INFORMATION CONTAINED HEREIN IS TRUE AND CORRECT TO THE BEST OF MY KNOWLEDGE

Submitted Electronically

Do NOT Write in This Space - KCC USE ONLY
Date Tested: Results: Date Plugged: Date Repaired: Date Put Back in Service:
Review Completed by: Comments:
TA Approved: Yes Denied Date:

Mail to the Appropriate KCC Conservation Office:

Table with 3 columns: District Office, Address, Phone. Rows for District Office #1, #2, #3, #4.



Liquid level calculated with
user supplied Acoustic Velocity
Acoustic Velocity 1150 ft/s

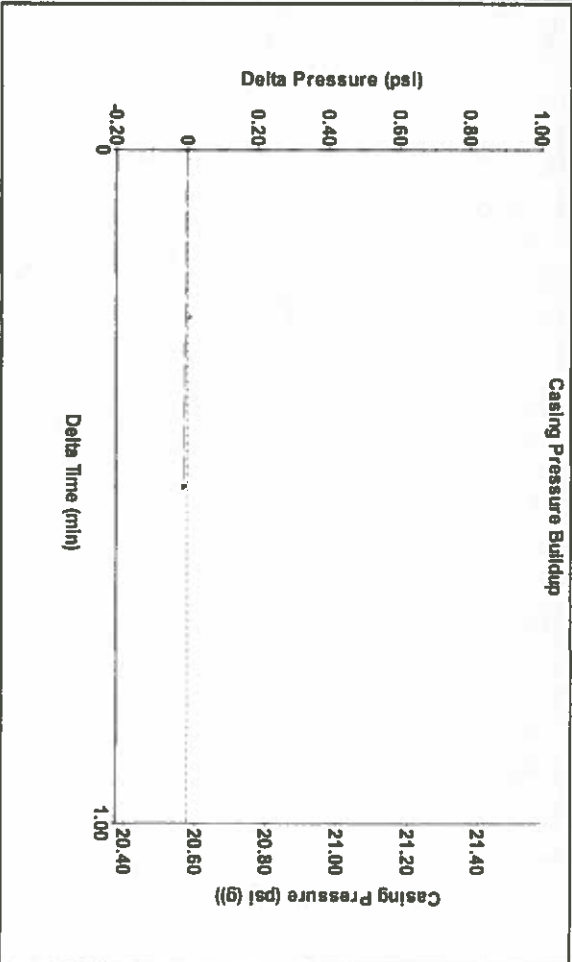
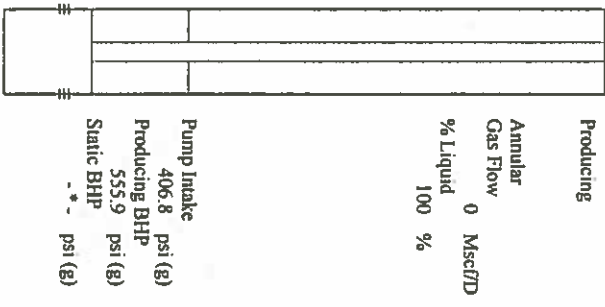


Analysis Method: Acoustic Velocity

Group: Merit Energy Company-Ulysses Well: WB Sherling 29-3 (acquired on: 10/29/18 12:03:22)

Production	Potential	Casing Pressure	Producing
Current	BB/LD	20.6 psi (g)	Annular
Oil -*	BB/LD	Casing Pressure Buildup	Gas Flow
Water -*	Misc/D	-0.010 psi	0 Misc/D
Gas -*		0.50 min	% Liquid
		Gas/Liquid Interface Pressure	100 %
IPR Method	Vogel	25.1 psi (g)	
PBHP/SBHP	-*		
Production Efficiency	0.0		
		Liquid Level Depth	
Oil 40 deg API		4218.20 ft	
Water 1.05 Sp.Gr.H2O			
Gas 0.85 Sp.Gr.AIR			
Acoustic Velocity	1150 ft/s	Pump Intake Depth	
		5350.00 ft	
		Formation Depth	
		5678.00 ft	

Formation Submergence	1132 ft
Total Gaseous Liquid Column HT (TVD)	1132 ft
Equivalent Gas Free Liquid HT (TVD)	1132 ft
Acoustic Test	
Tim Frydendall-Fluid Level Technician	



Change in Pressure -0.01 psi PT9522
Change in Time 0.50 min Range 0 - ? psi

Group: Merit Energy Company-Ulysses Well: WB Sherling 29-3 (acquired on: 10/29/18 12:03:22)

Entered Acoustic Velocity for Liquid Level depth determination

STATE OF KANSAS

CORPORATION COMMISSION
CONSERVATION DIVISION
DISTRICT No. 1
210 E. FRONTVIEW, SUITE A
DODGE CITY, KS 67801



PHONE: 620-682-7933
<http://kcc.ks.gov/>

GOVERNOR JEFF COLYER, M.D.

SHARI FEIST ALBRECHT, CHAIR | JAY SCOTT EMLER, COMMISSIONER | DWIGHT D. KEEN, COMMISSIONER

October 30, 2018

Katherine McClurkan
Merit Energy Company, LLC
13727 Noel Road, Suite 1200
Dallas, TX 75240

Re: Temporary Abandonment
API 15-067-21808-00-01
W.B. Scherling 29-3
NW/4 Sec.29-29S-38W
Grant County, Kansas

Dear Katherine McClurkan:

"Your temporary abandonment (TA) application for the well listed above has been approved. In accordance with K.A.R. 82-3-111 the TA status of this well will expire 10/30/2019.

- * If you return this well to service or plug it, please notify the District Office.
- * If you sell this well you are required to file a Transfer of Operator form, T-1.
- * If the well will remain temporarily abandoned, you must submit a new TA application, CP-111, before 10/30/2019.

You may contact me at the number above if you have questions.

Very truly yours,

Michael Maier"