

KANSAS CORPORATION COMMISSION
OIL & GAS CONSERVATION DIVISION

TEMPORARY ABANDONMENT WELL APPLICATION

OPERATOR: License#
Name:
Address 1:
Address 2:
City: State: Zip:
Contact Person:
Phone:
Contact Person Email:
Field Contact Person:
Field Contact Person Phone:

API No. 15-
Spot Description:
Sec. Twp. S. R.
GPS Location: Lat: Long:
Datum: NAD27 NAD83 WGS84
County: Elevation:
Lease Name: Well #:
Well Type: Oil Gas OG WSW Other:
SWD Permit #: ENHR Permit #:
Gas Storage Permit #:
Spud Date: Date Shut-In:

Table with 7 columns: Conductor, Surface, Production, Intermediate, Liner, Tubing. Rows include Size, Setting Depth, Amount of Cement, Top of Cement, Bottom of Cement.

Casing Fluid Level from Surface: How Determined? Date:
Casing Squeeze(s): to w / sacks of cement, to w / sacks of cement. Date:
Do you have a valid Oil & Gas Lease? Yes No
Depth and Type: Junk in Hole at Tools in Hole at Casing Leaks: Yes No Depth of casing leak(s):
Type Completion: ALT. I ALT. II Depth of: DV Tool: w / sacks of cement Port Collar: w / sack of cement
Packer Type: Size: Inch Set at: Feet
Total Depth: Plug Back Depth: Plug Back Method:

Geological Data:

Table with 4 columns: Formation Name, Formation Top, Formation Base, Completion Information. Rows 1 and 2.

UNDER PENALTY OF PERJURY I HEREBY ATTEST THAT THE INFORMATION CONTAINED HEREIN IS TRUE AND CORRECT TO THE BEST OF MY KNOWLEDGE

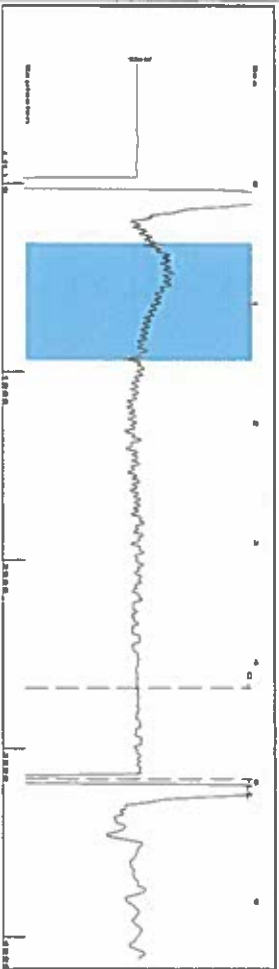
Submitted Electronically

Do NOT Write in This Space - KCC USE ONLY
Date Tested: Results: Date Plugged: Date Repaired: Date Put Back in Service:
Review Completed by: Comments:
TA Approved: Yes Denied Date:

Mail to the Appropriate KCC Conservation Office:

Table with 2 columns: Office Address, Phone. Rows for District Office #1, #2, #3, #4.

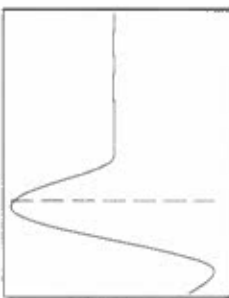
Group: SUBLETTE Well: CORRELL A-1 (acquired on: 10/23/18 09:42:00)



Filter Type High Pass
Manual Acoustic Velo 1262.95 ft/s
Automatic Collar Count Yes
Manual JTS/sec 19.9203

Time 4.981 sec
Joints 99.7716 Jts
Depth 3162.76 ft

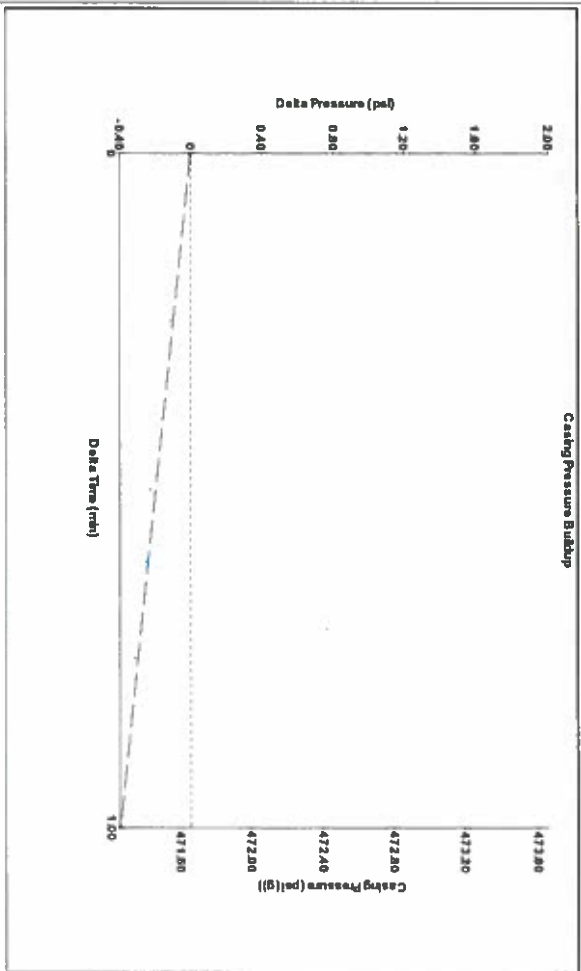
[0.5 to 1.5 (Sec)]



Analysis Method: Automatic

Group: SUBLETTE Well: CORRELL A-1 (acquired on: 10/23/18 09:42:00)

Group: SUBLETTE Well: CORRELL A-1 (acquired on: 10/23/18 09:42:00)



Change in Pressure -0.40 psi PT114679
Change in Time 1.00 min Range 0 - ? psi

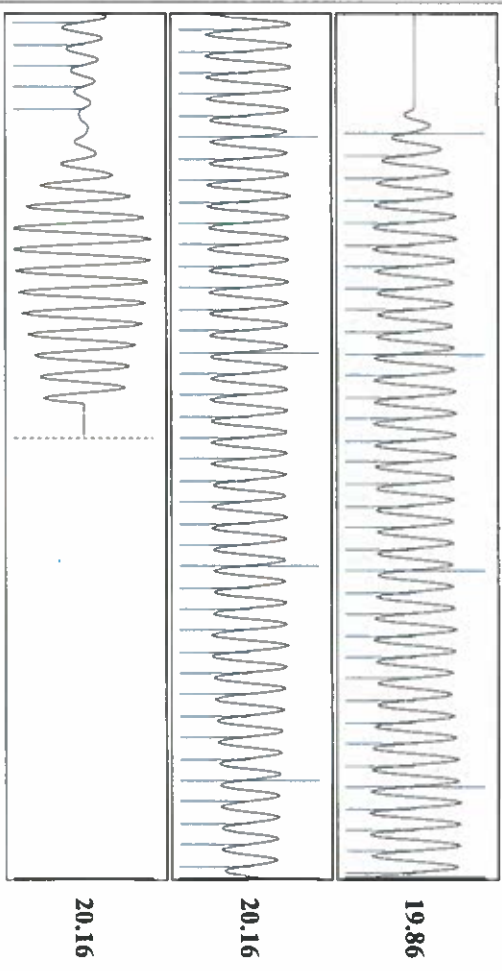
Group: SUBLETTE Well: CORRELL A-1 (acquired on: 10/23/18 09:42:00)

Production	Potential	Casing Pressure	Producing
Oil - * -	- * - BBL/D	471.7 psi (g)	Annular
Water - * -	- * - BBL/D	-0.397 psi	Gas Flow
Gas - * -	- * - Misc/D	1.00 min	% Liquid
IPR Method	Vogel	Gas/Liquid Interface Pressure	0 Misc/D
PBHP/SBHP	- * -	511.3 psi (g)	% Liquid
Production Efficiency	0.0		100 %

Oil 40 deg API	Liquid Level Depth	Pump Intake	Pump Intake
Water 1.05 Sp.Gr.120	3162.76 ft	4817.00 ft	1039.8 psi (g)
Gas 0.67 Sp.Gr.AIR	Pump Intake Depth	4794.00 ft	Producing BHP
Acoustic Velocity	1269.93 ft/s	Formation Depth	1032.6 psi (g)
		4794.00 ft	Static BHP



Formation Submergence
Total Gaseous Liquid Column HT (TVVD) 1654 ft
Equivalent Gas Free Liquid HT (TVVD) 1654 ft
Acoustic Test



Acoustic Velocity 1269.93 ft/s Joints counted 79
Joints Per Second 20.0304 Joints to liquid level 99.7716
Depth to liquid level 3162.76 ft Filter Width 17.9203
Automatic Collar Count Yes Time to 1st Collar 0.276

20.16

20.16

19.86

STATE OF KANSAS

CORPORATION COMMISSION
CONSERVATION DIVISION
DISTRICT No. 1
210 E. FRONTVIEW, SUITE A
DODGE CITY, KS 67801



PHONE: 620-682-7933
<http://kcc.ks.gov/>

GOVERNOR JEFF COLYER, M.D.

SHARI FEIST ALBRECHT, CHAIR | JAY SCOTT EMLER, COMMISSIONER | DWIGHT D. KEEN, COMMISSIONER

October 30, 2018

Katherine McClurkan
Merit Energy Company, LLC
13727 Noel Road, Suite 1200
Dallas, TX 75240

Re: Temporary Abandonment
API 15-081-21955-00-00
Correll A-1
NW/4 Sec.08-30S-33W
Haskell County, Kansas

Dear Katherine McClurkan:

"Your temporary abandonment (TA) application for the well listed above has been approved. In accordance with K.A.R. 82-3-111 the TA status of this well will expire 10/30/2019.

- * If you return this well to service or plug it, please notify the District Office.
- * If you sell this well you are required to file a Transfer of Operator form, T-1.
- * If the well will remain temporarily abandoned, you must submit a new TA application, CP-111, before 10/30/2019.

You may contact me at the number above if you have questions.

Very truly yours,

Michael Maier"