

KANSAS CORPORATION COMMISSION
OIL & GAS CONSERVATION DIVISION

TEMPORARY ABANDONMENT WELL APPLICATION

OPERATOR: License#
Name:
Address 1:
Address 2:
City: State: Zip:
Contact Person:
Phone:
Contact Person Email:
Field Contact Person:
Field Contact Person Phone:

API No. 15-
Spot Description:
Sec. Twp. S. R.
GPS Location: Lat: Long:
Datum: NAD27 NAD83 WGS84
County: Elevation:
Lease Name: Well #:
Well Type: Oil Gas OG WSW Other:
SWD Permit #: ENHR Permit #:
Gas Storage Permit #:
Spud Date: Date Shut-In:

Table with 7 columns: Conductor, Surface, Production, Intermediate, Liner, Tubing. Rows include Size, Setting Depth, Amount of Cement, Top of Cement, Bottom of Cement.

Casing Fluid Level from Surface: How Determined? Date:
Casing Squeeze(s): to w / sacks of cement, to w / sacks of cement. Date:
Do you have a valid Oil & Gas Lease? Yes No
Depth and Type: Junk in Hole at Tools in Hole at Casing Leaks: Yes No Depth of casing leak(s):
Type Completion: ALT. I ALT. II Depth of: DV Tool: w / sacks of cement Port Collar: w / sack of cement
Packer Type: Size: Inch Set at: Feet
Total Depth: Plug Back Depth: Plug Back Method:

Geological Data:

Table with 4 columns: Formation Name, Formation Top, Formation Base, Completion Information. Rows 1 and 2.

UNDER PENALTY OF PERJURY I HEREBY ATTEST THAT THE INFORMATION CONTAINED HEREIN IS TRUE AND CORRECT TO THE BEST OF MY KNOWLEDGE

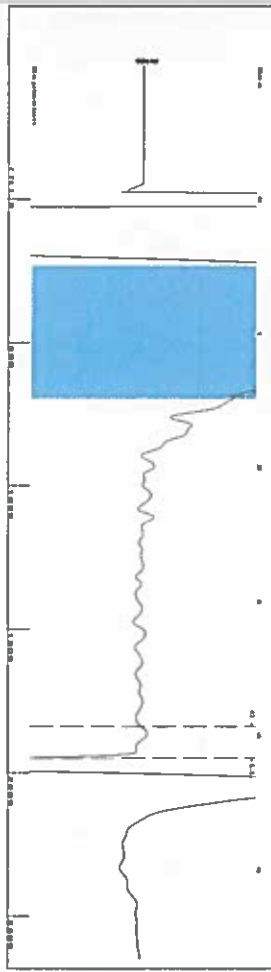
Submitted Electronically

Do NOT Write in This Space - KCC USE ONLY
Date Tested: Results: Date Plugged: Date Repaired: Date Put Back in Service:
Review Completed by: Comments:
TA Approved: Yes Denied Date:

Mail to the Appropriate KCC Conservation Office:

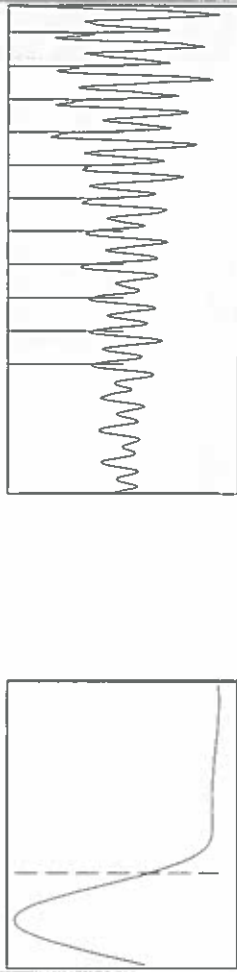
Table with 2 columns: Office Address, Phone. Rows for District Office #1, #2, #3, #4.

Group: SUBLETTE Well: SIMPSON TRUST 5J (acquired on: 10/01/18 10:17:45)



Filter Type High Pass Automatic Collar Count Yes
 Manual Acoustic Velocity 353 n/s Manual JTS/sec 14.7059
 Time 4.168 sec
 Joints 61.4279 Jis
 Depth 1947.27 ft

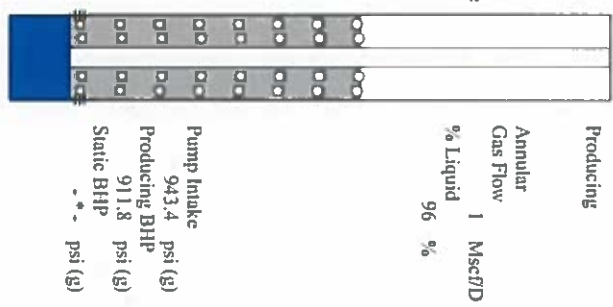
[0.5 to 1.5 (Sec)]



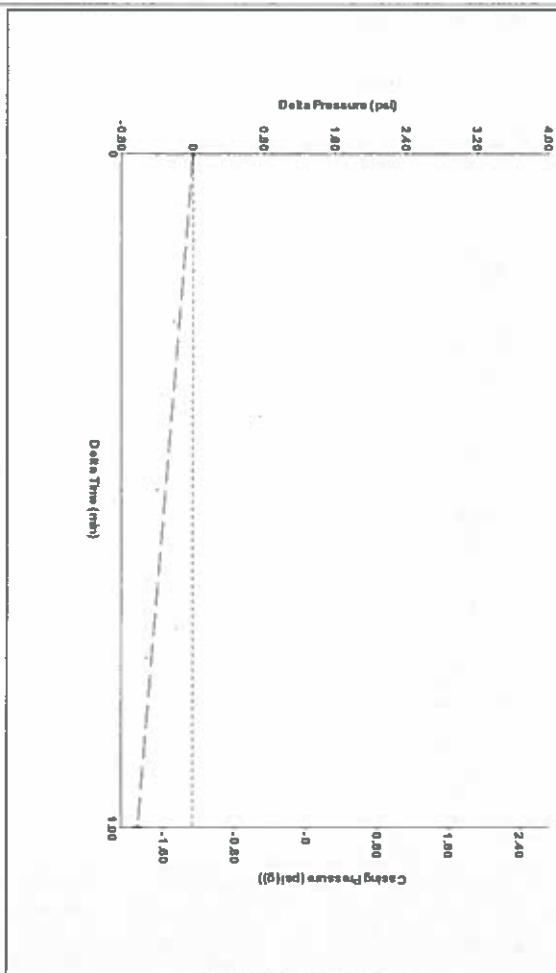
Analysis Method: Automatic

Group: SUBLETTE Well: SIMPSON TRUST 5J (acquired on: 10/01/18 10:17:45)

Production	Potential	Casting Pressure	Producing
Oil - * -	- * - BBL/D	-1.3 psi (g)	Annular Gas Flow 1 Mscf/D
Water - * -	- * - BBL/D	-0.613 psi	% Liquid 96 %
Gas - * -	- * - Mscf/D	1.00 min	
		Gas/Liquid Interface Pressure -0.3 psi (g)	
JPR Method PBHP/SBHP	Vogel - * -	Liquid Level Depth 1947.27 ft	Pump Intake 943.4 psi (g)
Production Efficiency 0.0		Pump Intake Depth 4937.00 ft	Producing BHP 911.8 psi (g)
Oil 40 deg API		Formation Depth 4834.00 ft	Static BHP - * - psi (g)
Water 1.05 Sp.Gr.H2O			
Gas 1.03 Sp.Gr.AIR			
Acoustic Velocity 934.389 n/s			
Formation Submergence			
Total Gaseous Liquid Column HT (TVD) 2990 ft			
Equivalent Gas Free Liquid HT (TVD) 2880 ft			
Acoustic Test			

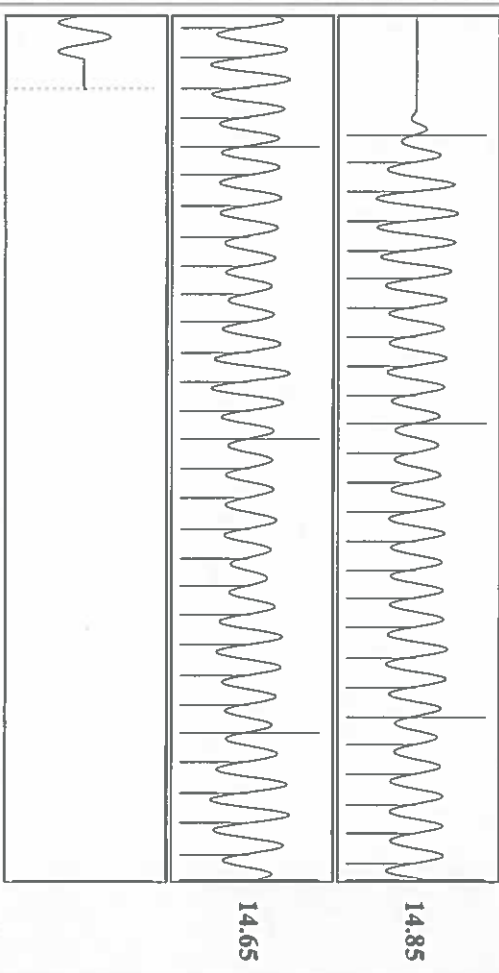


Group: SUBLETTE Well: SIMPSON TRUST 5J (acquired on: 10/01/18 10:17:45)



Change in Pressure -0.61 psi PT14679
 Change in Time 1.00 min Range
 0 - ? psi

Group: SUBLETTE Well: SIMPSON TRUST 5J (acquired on: 10/01/18 10:17:45)



Acoustic Velocity 934.389 n/s Joints counted 54
 Joints Per Second 14.738 Jis/sec Joints to liquid level 61.4279
 Depth to liquid level 1947.27 ft Filter Width 12.7059
 Automatic Collar Count Yes Time to 1st Collar 0.276 3.94

STATE OF KANSAS

CORPORATION COMMISSION
CONSERVATION DIVISION
DISTRICT No. 1
210 E. FRONTVIEW, SUITE A
DODGE CITY, KS 67801



PHONE: 620-682-7933
<http://kcc.ks.gov/>

GOVERNOR JEFF COLYER, M.D.

SHARI FEIST ALBRECHT, CHAIR | JAY SCOTT EMLER, COMMISSIONER | DWIGHT D. KEEN, COMMISSIONER

October 09, 2018

Katherine McClurkan
Merit Energy Company, LLC
13727 Noel Road, Suite 1200
Dallas, TX 75240

Re: Temporary Abandonment
API 15-175-22109-00-00
Simpson Trust 5-J4-31-33
SE/4 Sec.04-31S-33W
Seward County, Kansas

Dear Katherine McClurkan:

"Your temporary abandonment (TA) application for the well listed above has been approved. In accordance with K.A.R. 82-3-111 the TA status of this well will expire 10/09/2019.

- * If you return this well to service or plug it, please notify the District Office.
- * If you sell this well you are required to file a Transfer of Operator form, T-1.
- * If the well will remain temporarily abandoned, you must submit a new TA application, CP-111, before 10/09/2019.

You may contact me at the number above if you have questions.

Very truly yours,

Michael Maier"