

KANSAS CORPORATION COMMISSION
OIL & GAS CONSERVATION DIVISION

TEMPORARY ABANDONMENT WELL APPLICATION

OPERATOR: License#
Name:
Address 1:
Address 2:
City: State: Zip:
Contact Person:
Phone:
Contact Person Email:
Field Contact Person:
Field Contact Person Phone:

API No. 15-
Spot Description:
Sec. Twp. S. R.
GPS Location: Lat: Long:
Datum: NAD27 NAD83 WGS84
County: Elevation:
Lease Name: Well #:
Well Type: Oil Gas OG WSW Other:
SWD Permit #: ENHR Permit #:
Gas Storage Permit #:
Spud Date: Date Shut-In:

Table with 7 columns: Conductor, Surface, Production, Intermediate, Liner, Tubing. Rows include Size, Setting Depth, Amount of Cement, Top of Cement, Bottom of Cement.

Casing Fluid Level from Surface: How Determined? Date:
Casing Squeeze(s): to w / sacks of cement, to w / sacks of cement. Date:
Do you have a valid Oil & Gas Lease? Yes No
Depth and Type: Junk in Hole at Tools in Hole at Casing Leaks: Yes No Depth of casing leak(s):
Type Completion: ALT. I ALT. II Depth of: DV Tool: w / sacks of cement Port Collar: w / sack of cement
Packer Type: Size: Inch Set at: Feet
Total Depth: Plug Back Depth: Plug Back Method:

Geological Data:

Table with 4 columns: Formation Name, Formation Top, Formation Base, Completion Information. Rows 1 and 2.

UNDER PENALTY OF PERJURY I HEREBY ATTEST THAT THE INFORMATION CONTAINED HEREIN IS TRUE AND CORRECT TO THE BEST OF MY KNOWLEDGE

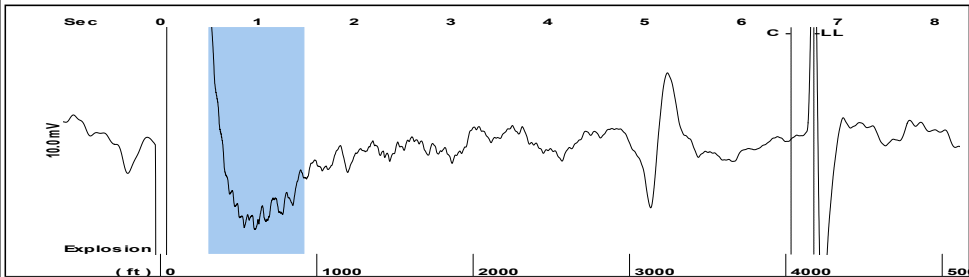
Submitted Electronically

Do NOT Write in This Space - KCC USE ONLY
Date Tested: Results: Date Plugged: Date Repaired: Date Put Back in Service:
Review Completed by: Comments:
TA Approved: Yes Denied Date:

Mail to the Appropriate KCC Conservation Office:

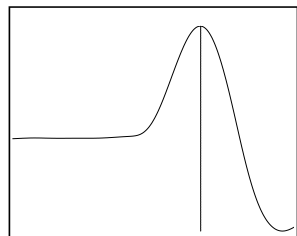
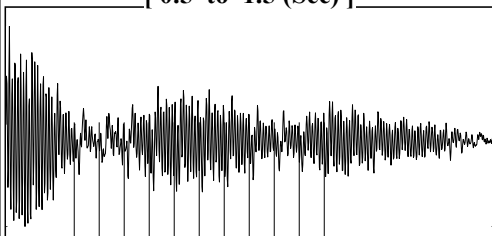
Table with 3 columns: District Office #, Address, Phone. Rows 1-4.

Group: MyWells Well: Rucker #2 (acquired on: 12/21/17 13:06:09)



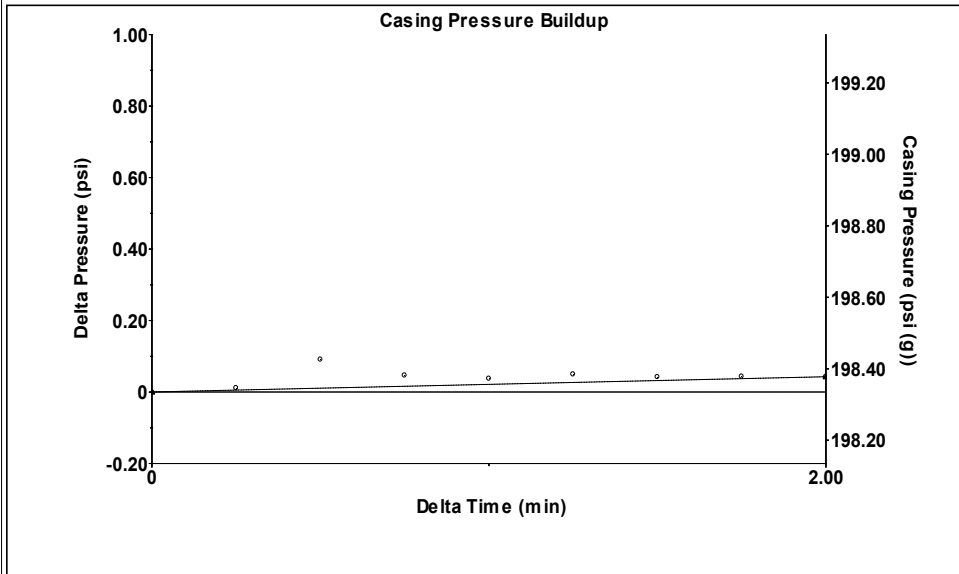
Filter Type High Pass Automatic Collar Count Yes Time 6.752 sec
 Manual Acoustic Velo 1199.61 ft/s Manual JTS/sec 19.4932 Joints 135.816 Jts
 Depth 4179.06 ft

[0.5 to 1.5 (Sec)]



Analysis Method: Automatic

Group: MyWells Well: Rucker #2 (acquired on: 12/21/17 13:06:09)

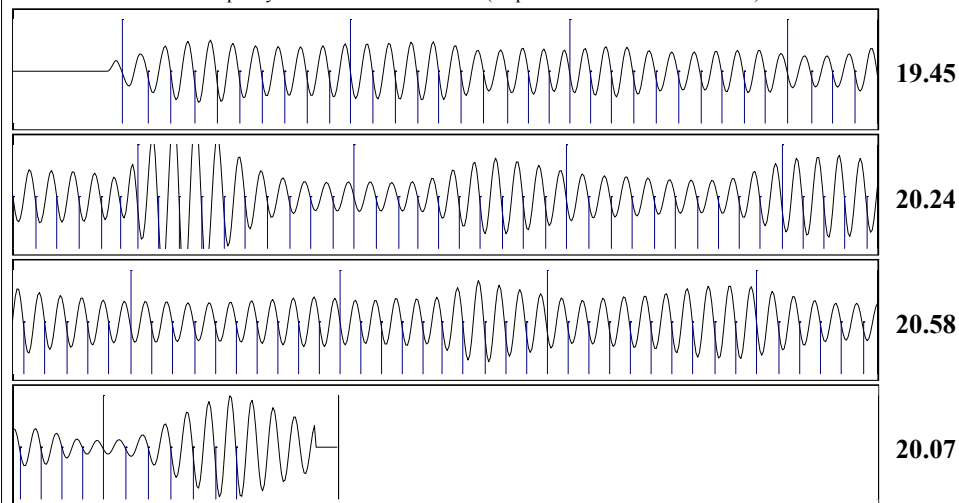


Change in Pressure 0.04 psi PT12865
 Change in Time 2.00 min Range 0 - ? psi

Group: MyWells Well: Rucker #2 (acquired on: 12/21/17 13:06:09)

Production					
Current	Potential	Casing Pressure		Producing	
Oil - * -	- * - BBL/D	198.3 psi (g)			
Water - * -	- * - BBL/D	Casing Pressure Buildup		Annular	
Gas - * -	- * - Mscf/D	0.0 psi		Gas Flow	1 Mscf/D
		2.00 min		% Liquid	98 %
IPR Method	Vogel	Gas/Liquid Interface Pressure			
PBHP/SBHP	- * -	222.4 psi (g)			
Production Efficiency	0.0				
		Liquid Level Depth			
Oil 40 deg.API		4179.06 ft			
Water 1.05 Sp.Gr.H2O		Pump Intake Depth			
Gas 0.74 Sp.Gr.AIR		4584.00 ft			
Acoustic Velocity	1237.87 ft/s	Formation Depth			
		4584.00 ft			
Formation Submergence				Pump Intake	
Total Gaseous Liquid Column HT (TVD)	405 ft			353.8 psi (g)	
Equivalent Gas Free Liquid HT (TVD)	395 ft			Producing BHP	
				353.8 psi (g)	
Acoustic Test				Static BHP	
				- * - psi (g)	

Group: MyWells Well: Rucker #2 (acquired on: 12/21/17 13:06:09)



Acoustic Velocity 1237.87 ft/s Joints counted 126
 Joints Per Second 20.1149 jts/sec Joints to liquid level 135.816
 Depth to liquid level 4179.06 ft Filter Width 17.4932 21.4932
 Automatic Collar Count Yes Time to 1st Collar 0.252 6.516

STATE OF KANSAS

CORPORATION COMMISSION
CONSERVATION DIVISION
DISTRICT No. 1
210 E. FRONTVIEW, SUITE A
DODGE CITY, KS 67801



PHONE: 620-682-7933
<http://kcc.ks.gov/>

GOVERNOR JEFF COLYER, M.D.

SHARI FEIST ALBRECHT, CHAIR | JAY SCOTT EMLER, COMMISSIONER | DWIGHT D. KEEN, COMMISSIONER

September 11, 2018

Melody C. Fletcher
Oil Producers, Inc. of Kansas
1710 WATERFRONT PKWY
WICHITA, KS 67206-6603

Re: Temporary Abandonment
API 15-007-22888-00-00
RUCKER 2
NE/4 Sec.25-31S-12W
Barber County, Kansas

Dear Melody C. Fletcher:

"Your temporary abandonment (TA) application for the well listed above has been approved. In accordance with K.A.R. 82-3-111 the TA status of this well will expire 09/11/2019.

- * If you return this well to service or plug it, please notify the District Office.
- * If you sell this well you are required to file a Transfer of Operator form, T-1.
- * If the well will remain temporarily abandoned, you must submit a new TA application, CP-111, before 09/11/2019.

You may contact me at the number above if you have questions.

Very truly yours,

Michael Maier"