

KANSAS CORPORATION COMMISSION
OIL & GAS CONSERVATION DIVISION

TEMPORARY ABANDONMENT WELL APPLICATION

OPERATOR: License# _____
 Name: _____
 Address 1: _____
 Address 2: _____
 City: _____ State: _____ Zip: _____ + _____
 Contact Person: _____
 Phone: (_____) _____
 Contact Person Email: _____
 Field Contact Person: _____
 Field Contact Person Phone: (_____) _____

API No. 15- _____
 Spot Description: _____
 _____ - _____ - _____ - _____ Sec. _____ Twp. _____ S. R. _____ E W
 _____ feet from N / S Line of Section
 _____ feet from E / W Line of Section
 GPS Location: Lat: _____, Long: _____
(e.g. xx.xxxxx) (e.g. -xxx.xxxxx)
 Datum: NAD27 NAD83 WGS84
 County: _____ Elevation: _____ GL KB
 Lease Name: _____ Well #: _____
 Well Type: (check one) Oil Gas OG WSW Other: _____
 SWD Permit #: _____ ENHR Permit #: _____
 Gas Storage Permit #: _____
 Spud Date: _____ Date Shut-In: _____

	Conductor	Surface	Production	Intermediate	Liner	Tubing
Size						
Setting Depth						
Amount of Cement						
Top of Cement						
Bottom of Cement						

Casing Fluid Level from Surface: _____ How Determined? _____ Date: _____
 Casing Squeeze(s): _____ to _____ w / _____ sacks of cement, _____ to _____ w / _____ sacks of cement. Date: _____
(top) (bottom) (top) (bottom)
 Do you have a valid Oil & Gas Lease? Yes No
 Depth and Type: Junk in Hole at _____ Tools in Hole at _____ Casing Leaks: Yes No Depth of casing leak(s): _____
(depth) (depth)
 Type Completion: ALT. I ALT. II Depth of: DV Tool: _____ w / _____ sacks of cement Port Collar: _____ w / _____ sack of cement
(depth) (depth)
 Packer Type: _____ Size: _____ Inch Set at: _____ Feet
 Total Depth: _____ Plug Back Depth: _____ Plug Back Method: _____

Geological Data:

Formation Name	Formation Top	Formation Base	Completion Information
1. _____	At: _____	to _____ Feet	Perforation Interval _____ to _____ Feet or Open Hole Interval _____ to _____ Feet
2. _____	At: _____	to _____ Feet	Perforation Interval _____ to _____ Feet or Open Hole Interval _____ to _____ Feet

UNDER PENALTY OF PERJURY I HEREBY ATTEST THAT THE INFORMATION CONTAINED HEREIN IS TRUE AND CORRECT TO THE BEST OF MY KNOWLEDGE

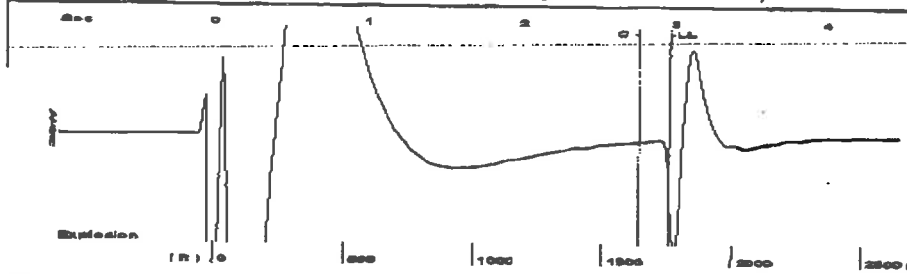
Submitted Electronically

Do NOT Write in This Space - KCC USE ONLY	Date Tested: _____	Results: _____	Date Plugged: _____	Date Repaired: _____	Date Put Back in Service: _____
	Review Completed by: _____ Comments: _____				
TA Approved: <input type="checkbox"/> Yes <input type="checkbox"/> Denied Date: _____					

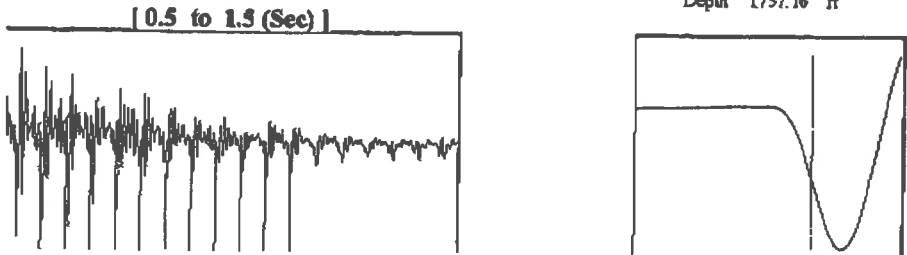
Mail to the Appropriate KCC Conservation Office:

	KCC District Office #1 - 210 E. Frontview, Suite A, Dodge City, KS 67801	Phone 620.682.7933
	KCC District Office #2 - 3450 N. Rock Road, Building 600, Suite 601, Wichita, KS 67226	Phone 316.337.7400
	KCC District Office #3 - 137 E. 21st St., Chanute, KS 66720	Phone 620.902.6450
	KCC District Office #4 - 2301 E. 13th Street, Hays, KS 67601-2651	Phone 785.261.6250

Group: Larned Well: Price Revocable Trust 1-28 (acquired on: 09/19/18 15:59:21)

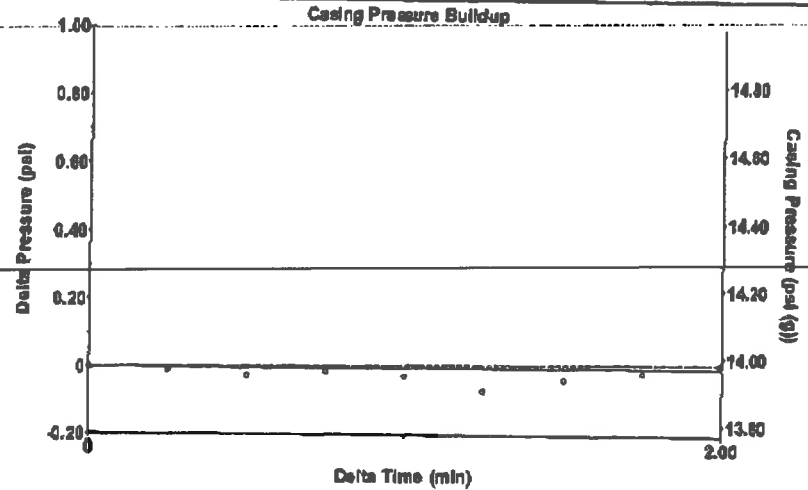


Filter Type High Pass Automatic Collar Count Yes Time 2.97 sec
 Manual Acoustic Velocity 191.9 ft/s Manual JTS/sec 18.4162 Joints 54.3005 Jts
 Depth 1757.16 ft



Analysis Method: Automatic

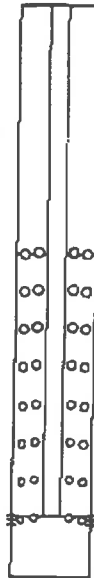
Group: Larned Well: Price Revocable Trust 1-28 (acquired on: 09/19/18 15:59:21)



Change in Pressure 0.01 psi PT13440
 Range 0 - 1 psi
 Change in Time 2.00 min

Group: Larned Well: Price Revocable Trust 1-28 (acquired on: 09/19/18 15:59:21)

Production	Potential	Casing Pressure
Current		14.0 psi (g)
Oil -.-	-.- BBL/D	Casing Pressure Buildup
Water -.-	-.- BBL/D	0.0 psi
Gas -.-	-.- Mscf/D	2.00 min
		Gas/Liquid Interface Pressure
		89.2 psi (g)
IPR Method	Vogel	
PBHP/SBHP	-.-	
Production Efficiency	0.0	
Oil 40 deg.API		Liquid Level Depth
Water 1.05 Sp.Gr.H2O		1757.16 ft
Gas 0.78 Sp.Gr.AIR		Pump Intake Depth
		4143.00 ft
Acoustic Velocity	1183.28 ft/s	Formation Depth
		4180.00 ft

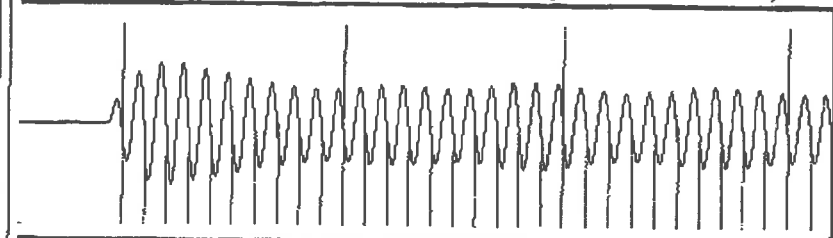


Producing

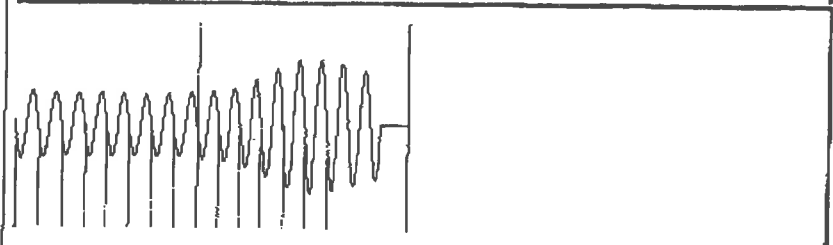
Annular Gas Flow 92 Mscf/D
 % Liquid 24 %

Pump Intake
 286.9 psi (g)
 Producing BHP 295.3 psi (g)
 Static BHP -.- psi (g)

Group: Larned Well: Price Revocable Trust 1-28 (acquired on: 09/19/18 15:59:21)



18.28



18.29

Acoustic Velocity	1183.28 ft/s	Joints counted	46
Joints Per Second	18.283 jts/sec	Joints to liquid level	54.3005
Depth to liquid level	1757.16 ft	Filter Width	16.4162
Automatic Collar Count	Yes	Time to 1st Collar	0.252
			2.768

STATE OF KANSAS

CORPORATION COMMISSION
CONSERVATION DIVISION
DISTRICT No. 1
210 E. FRONTVIEW, SUITE A
DODGE CITY, KS 67801



PHONE: 620-682-7933
<http://kcc.ks.gov/>

GOVERNOR JEFF COLYER, M.D.

SHARI FEIST ALBRECHT, CHAIR | JAY SCOTT EMLER, COMMISSIONER | DWIGHT D. KEEN, COMMISSIONER

September 25, 2018

Loveness Mpanje
F. G. Holl Company L.L.C.
9431 E CENTRAL STE 100
WICHITA, KS 67206-2563

Re: Temporary Abandonment
API 15-145-21660-00-02
PRICE REVOCABLE TRUST 1-28
NE/4 Sec.28-20S-19W
Pawnee County, Kansas

Dear Loveness Mpanje:

"Your temporary abandonment (TA) application for the well listed above has been approved. In accordance with K.A.R. 82-3-111 the TA status of this well will expire 09/25/2019.

- * If you return this well to service or plug it, please notify the District Office.
- * If you sell this well you are required to file a Transfer of Operator form, T-1.
- * If the well will remain temporarily abandoned, you must submit a new TA application, CP-111, before 09/25/2019.

You may contact me at the number above if you have questions.

Very truly yours,

Michael Maier"