

KANSAS CORPORATION COMMISSION
OIL & GAS CONSERVATION DIVISION

TEMPORARY ABANDONMENT WELL APPLICATION

OPERATOR: License# _____
 Name: _____
 Address 1: _____
 Address 2: _____
 City: _____ State: _____ Zip: _____ + _____
 Contact Person: _____
 Phone: (_____) _____
 Contact Person Email: _____
 Field Contact Person: _____
 Field Contact Person Phone: (_____) _____

API No. 15- _____
 Spot Description: _____
 _____ - _____ - _____ - _____ Sec. _____ Twp. _____ S. R. _____ E W
 _____ feet from N / S Line of Section
 _____ feet from E / W Line of Section
 GPS Location: Lat: _____, Long: _____
(e.g. xx.xxxxx) (e.g. -xxx.xxxxx)
 Datum: NAD27 NAD83 WGS84
 County: _____ Elevation: _____ GL KB
 Lease Name: _____ Well #: _____
 Well Type: (check one) Oil Gas OG WSW Other: _____
 SWD Permit #: _____ ENHR Permit #: _____
 Gas Storage Permit #: _____
 Spud Date: _____ Date Shut-In: _____

| | Conductor | Surface | Production | Intermediate | Liner | Tubing |
|------------------|-----------|---------|------------|--------------|-------|--------|
| Size | | | | | | |
| Setting Depth | | | | | | |
| Amount of Cement | | | | | | |
| Top of Cement | | | | | | |
| Bottom of Cement | | | | | | |

Casing Fluid Level from Surface: _____ How Determined? _____ Date: _____
 Casing Squeeze(s): _____ to _____ w / _____ sacks of cement, _____ to _____ w / _____ sacks of cement. Date: _____
(top) (bottom) (top) (bottom)
 Do you have a valid Oil & Gas Lease? Yes No
 Depth and Type: Junk in Hole at _____ Tools in Hole at _____ Casing Leaks: Yes No Depth of casing leak(s): _____
(depth) (depth)
 Type Completion: ALT. I ALT. II Depth of: DV Tool: _____ w / _____ sacks of cement Port Collar: _____ w / _____ sack of cement
(depth) (depth)
 Packer Type: _____ Size: _____ Inch Set at: _____ Feet
 Total Depth: _____ Plug Back Depth: _____ Plug Back Method: _____

Geological Data:

| Formation Name | Formation Top | Formation Base | Completion Information |
|----------------|---------------|----------------|--|
| 1. _____ | At: _____ | to _____ Feet | Perforation Interval _____ to _____ Feet or Open Hole Interval _____ to _____ Feet |
| 2. _____ | At: _____ | to _____ Feet | Perforation Interval _____ to _____ Feet or Open Hole Interval _____ to _____ Feet |

UNDER PENALTY OF PERJURY I HEREBY ATTEST THAT THE INFORMATION CONTAINED HEREIN IS TRUE AND CORRECT TO THE BEST OF MY KNOWLEDGE

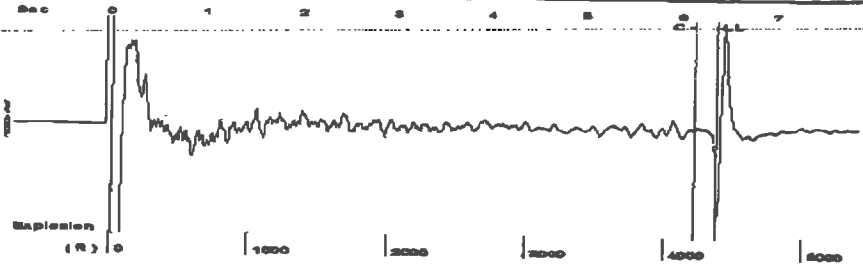
Submitted Electronically

| | | | | | |
|---|--|----------------|---------------------|----------------------|---------------------------------|
| Do NOT Write in This Space - KCC USE ONLY | Date Tested: _____ | Results: _____ | Date Plugged: _____ | Date Repaired: _____ | Date Put Back in Service: _____ |
| | Review Completed by: _____ Comments: _____ | | | | |
| TA Approved: <input type="checkbox"/> Yes <input type="checkbox"/> Denied Date: _____ | | | | | |

Mail to the Appropriate KCC Conservation Office:

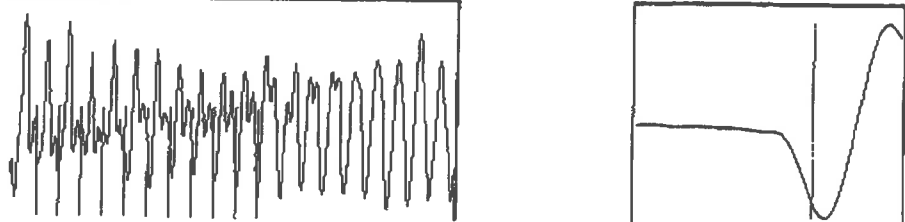
| | | |
|--|--|--------------------|
|  | KCC District Office #1 - 210 E. Frontview, Suite A, Dodge City, KS 67801 | Phone 620.682.7933 |
| | KCC District Office #2 - 3450 N. Rock Road, Building 600, Suite 601, Wichita, KS 67226 | Phone 316.337.7400 |
| | KCC District Office #3 - 137 E. 21st St., Chanute, KS 66720 | Phone 620.902.6450 |
| | KCC District Office #4 - 2301 E. 13th Street, Hays, KS 67601-2651 | Phone 785.261.6250 |

Group: Belpre Well: Britten 3-15 (acquired on: 09/19/18 13:04:00)



Filter Type High Pass Automatic Collar Count Yes Time 6.37 sec
 Manual Acoustic Velocity 1349.9 ft/s Manual JTS/sec 20.8768 Joints 135.325 J/s
 Depth 4375.04 ft

[4.5 to 5.5 (Sec)]



Analysis Method: Automatic

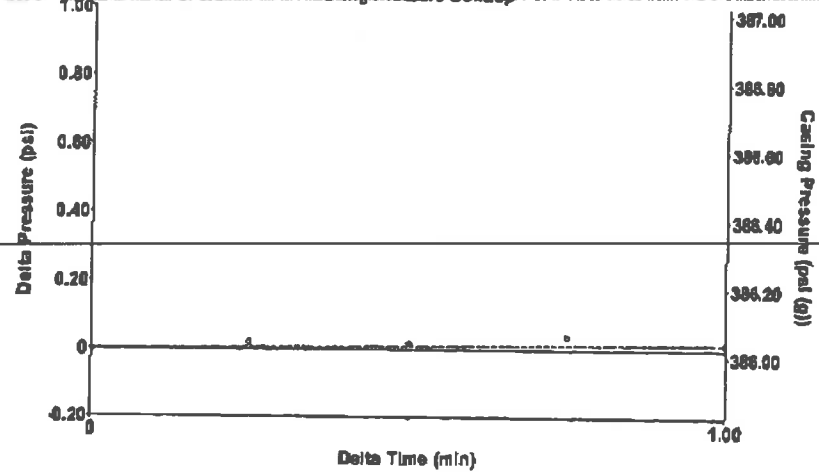
Group: Belpre Well: Britten 3-15 (acquired on: 09/19/18 13:04:00)

| | | | |
|--------------------------------------|--------------|-------------------------------|-----------|
| Production | Potential | Casing Pressure | Producing |
| Oil .-. .-. BBL/D | | 386.0 psi (g) | |
| Water .-. .-. BBL/D | | Casing Pressure Buildup | Annular |
| Gas .-. .-. Mscf/D | | 0.0 psi | Gas Flow |
| | | 1.00 min | 0 Mscf/D |
| IPR Method | Vogel | Gas/Liquid Interface Pressure | % Liquid |
| PBHP/SBHP | | 1.4 psi (g) | 100 % |
| Production Efficiency | 0.0 | | |
| Oil 40 deg.API | | Liquid Level Depth | |
| Water 1.05 Sp.Gr.H2O | | 4375.04 ft | |
| Gas 0.65 Sp.Gr.AIR | | Pump Intake Depth | |
| | | 4397.00 ft | |
| Acoustic Velocity | 1373.64 ft/s | Formation Depth | |
| | | 4328.00 ft | |
| Formation Submergence | | | |
| Total Gaseous Liquid Column HT (TVD) | 22 ft | | |
| Equivalent Gas Free Liquid HT (TVD) | 22 ft | | |
| Acoustic Test | | | |



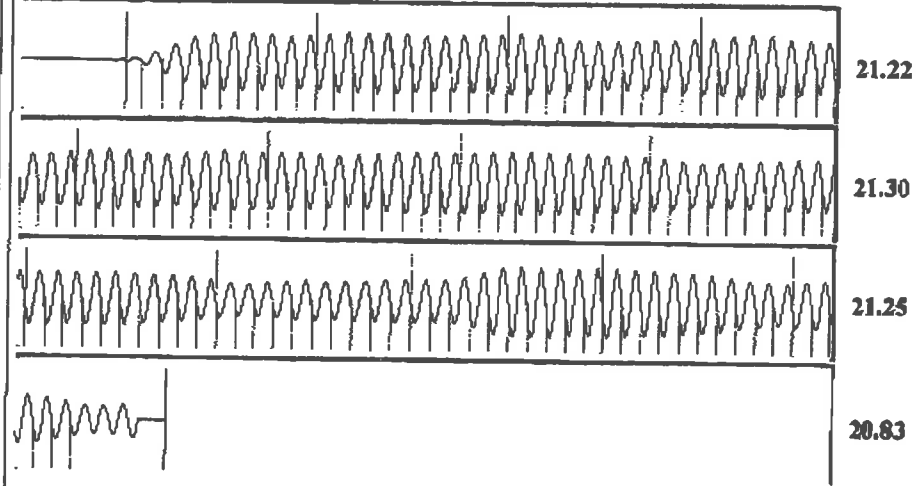
Group: Belpre Well: Britten 3-15 (acquired on: 09/19/18 13:04:00)

Casing Pressure Buildup



Change in Pressure 0.02 psi PT13440
 Change in Time 1.00 min Range 0-1 psi

Group: Belpre Well: Britten 3-15 (acquired on: 09/19/18 13:04:00)



Acoustic Velocity 1373.64 ft/s Joints counted 125
 Joints Per Second 21.2441 jts/sec Joints to liquid level 135.325
 Depth to liquid level 4375.04 ft Filter Width 18.8768 22.8768
 Automatic Collar Count Yes Time to 1st Collar 0.256 6.14

STATE OF KANSAS

CORPORATION COMMISSION
CONSERVATION DIVISION
DISTRICT No. 1
210 E. FRONTVIEW, SUITE A
DODGE CITY, KS 67801



PHONE: 620-682-7933
<http://kcc.ks.gov/>

GOVERNOR JEFF COLYER, M.D.

SHARI FEIST ALBRECHT, CHAIR | JAY SCOTT EMLER, COMMISSIONER | DWIGHT D. KEEN, COMMISSIONER

September 25, 2018

Loveness Mpanje
F. G. Holl Company L.L.C.
9431 E CENTRAL STE 100
WICHITA, KS 67206-2563

Re: Temporary Abandonment
API 15-047-21131-00-00
BRITTON 3-15
SW/4 Sec.15-24S-17W
Edwards County, Kansas

Dear Loveness Mpanje:

"Your temporary abandonment (TA) application for the well listed above has been approved. In accordance with K.A.R. 82-3-111 the TA status of this well will expire 09/25/2019.

- * If you return this well to service or plug it, please notify the District Office.
- * If you sell this well you are required to file a Transfer of Operator form, T-1.
- * If the well will remain temporarily abandoned, you must submit a new TA application, CP-111, before 09/25/2019.

You may contact me at the number above if you have questions.

Very truly yours,

Michael Maier"