

KANSAS CORPORATION COMMISSION
OIL & GAS CONSERVATION DIVISION

TEMPORARY ABANDONMENT WELL APPLICATION

OPERATOR: License#
Name:
Address 1:
Address 2:
City: State: Zip:
Contact Person:
Phone:
Contact Person Email:
Field Contact Person:
Field Contact Person Phone:

API No. 15-
Spot Description:
Sec. Twp. S. R.
GPS Location: Lat: Long:
Datum: NAD27 NAD83 WGS84
County: Elevation:
Lease Name: Well #:
Well Type: Oil Gas OG WSW Other:
SWD Permit #: ENHR Permit #:
Gas Storage Permit #:
Spud Date: Date Shut-In:

Table with 7 columns: Conductor, Surface, Production, Intermediate, Liner, Tubing. Rows include Size, Setting Depth, Amount of Cement, Top of Cement, Bottom of Cement.

Casing Fluid Level from Surface: How Determined? Date:
Casing Squeeze(s): to w / sacks of cement, to w / sacks of cement. Date:
Do you have a valid Oil & Gas Lease? Yes No
Depth and Type: Junk in Hole at Tools in Hole at Casing Leaks: Yes No Depth of casing leak(s):
Type Completion: ALT. I ALT. II Depth of: DV Tool: w / sacks of cement Port Collar: w / sack of cement
Packer Type: Size: Inch Set at: Feet
Total Depth: Plug Back Depth: Plug Back Method:

Geological Data:

Table with 4 columns: Formation Name, Formation Top, Formation Base, Completion Information. Rows 1 and 2.

UNDER PENALTY OF PERJURY I HEREBY ATTEST THAT THE INFORMATION CONTAINED HEREIN IS TRUE AND CORRECT TO THE BEST OF MY KNOWLEDGE

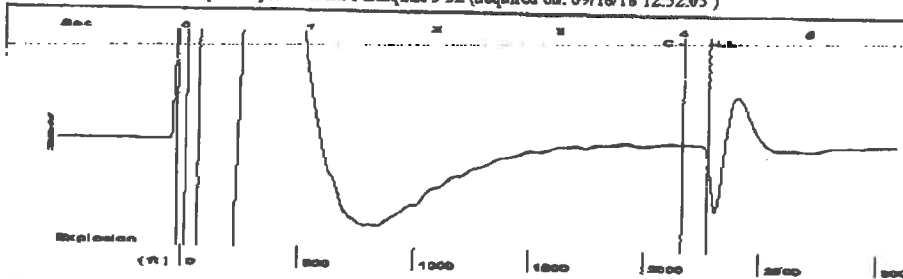
Submitted Electronically

Do NOT Write in This Space - KCC USE ONLY
Date Tested: Results: Date Plugged: Date Repaired: Date Put Back in Service:
Review Completed by: Comments:
TA Approved: Yes Denied Date:

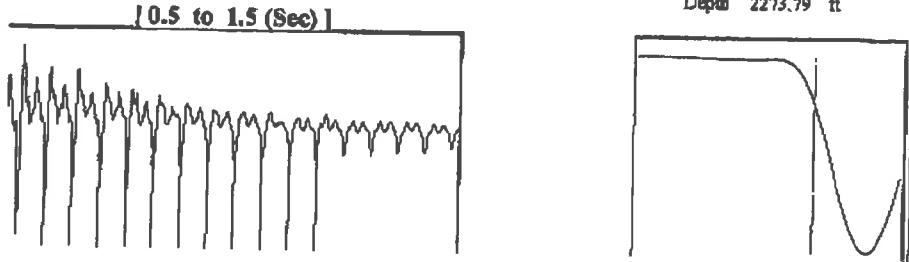
Mail to the Appropriate KCC Conservation Office:

Table with 3 columns: District Office, Address, Phone. Rows for District Office #1, #2, #3, #4.

Group: Sawyer Well: Palmquist 3-32 (acquired on: 09/18/18 12:52:05)

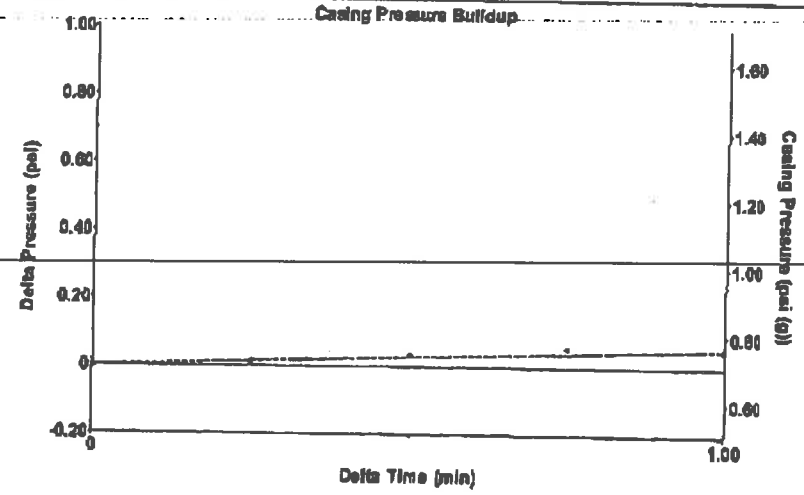


Filter Type High Pass Automatic Collar Count Yes Time 4.216 sec
 Manual Acoustic Velocity 1073.4 ft/s Manual JTS/sec 16.835 Joints 71.3233 Its
 Depth 2273.79 ft



Analysis Method: Automatic

Group: Sawyer Well: Palmquist 3-32 (acquired on: 09/18/18 12:52:05)

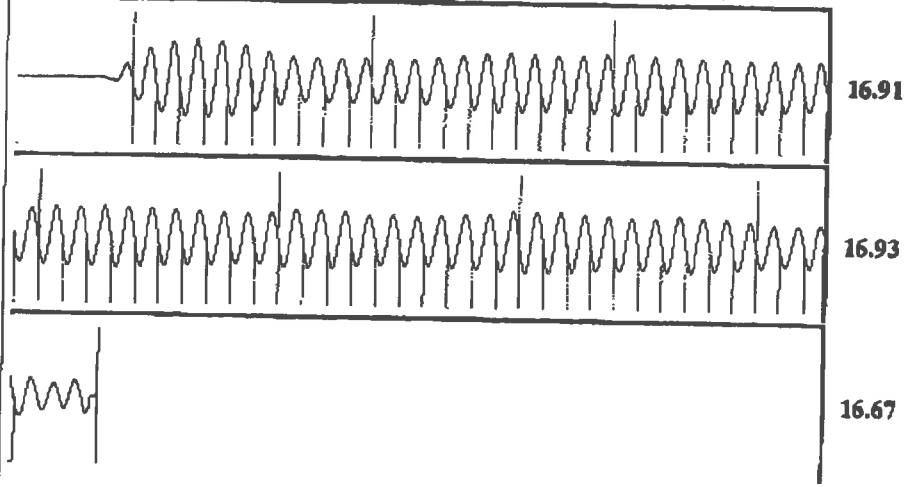


Change in Pressure 0.06 psi PT13440
 Change in Time 1.00 min Range 0 - 1 psi

Group: Sawyer Well: Palmquist 3-32 (acquired on: 09/18/18 12:52:05)

Production	Potential	Casing Pressure	Producing
Oil -.-	-.- BBL/D	0.7 psi (g)	Annular
Water -.-	-.- BBL/D	Casing Pressure Buildup	Gas Flow
Gas -.-	-.- Msc/D	0.1 psi	1 Msc/D
		1.00 min	% Liquid
IPR Method	Vogel	Gas/Liquid Interface Pressure	92 %
FBHP/SBHP	-.-	1.8 psi (g)	
Production Efficiency	0.0		
Oil 40 deg API		Liquid Level Depth	
Water 1.05 Sp.Gr.H2O		2273.79 ft	
Gas 0.90 Sp.Gr.AIR		Pump Intake Depth	
Acoustic Velocity 1078.65 ft/s		4593.00 ft	
		Formation Depth	
		4522.00 ft	
Formation Submergence		Pump Intake	
Total Gaseous Liquid Column HT (TVD) 2319 ft		713.7 psi (g)	
Equivalent Gas Free Liquid HT (TVD) 2137 ft		Producing BHP	
Acoustic Test		691.1 psi (g)	
		Static BHP	
		-.- psi (g)	

Group: Sawyer Well: Palmquist 3-32 (acquired on: 09/18/18 12:52:05)



Acoustic Velocity 1078.65 ft/s Joints counted 63
 Joints Per Second 16.9173 jts/sec Joints to liquid level 71.3233
 Depth to liquid level 2273.79 ft Filter Width 14.835 18.835
 Automatic Collar Count Yes Time to 1st Collar 0.288 4.012