

KANSAS CORPORATION COMMISSION
OIL & GAS CONSERVATION DIVISION

Form must be Typed

Form must be signed

All blanks must be complete

TEMPORARY ABANDONMENT WELL APPLICATION

OPERATOR: License# _____

Name: _____

Address 1: _____

Address 2: _____

City: _____ State: _____ Zip: _____ + _____

Contact Person: _____

Phone: (_____) _____

Contact Person Email: _____

Field Contact Person: _____

Field Contact Person Phone: (_____) _____

API No. 15- _____

Spot Description: _____

____ - ____ - ____ - ____ Sec. _____ Twp. _____ S. R. _____ ☐ E ☐ W_____ feet from ☐ N / ☐ S Line of Section_____ feet from ☐ E / ☐ W Line of Section

GPS Location: Lat: _____, Long: _____

(e.g. xx.xxxxx)

Datum: ☐ NAD27 ☐ NAD83 ☐ WGS84

(e.g. -xxx.xxxxx)

County: _____ Elevation: _____ ☐ GL ☐ KB

Lease Name: _____ Well #: _____

Well Type: (check one) ☐ Oil ☐ Gas ☐ OG ☐ WSW ☐ Other: _____☐ SWD Permit #: _____ ☐ ENHR Permit #: _____☐ Gas Storage Permit #: _____

Spud Date: _____ Date Shut-In: _____

	Conductor	Surface	Production	Intermediate	Liner	Tubing
Size						
Setting Depth						
Amount of Cement						
Top of Cement						
Bottom of Cement						

Casing Fluid Level from Surface: _____ How Determined? _____ Date: _____

Casing Squeeze(s): _____ to _____ w / _____ sacks of cement, _____ to _____ w / _____ sacks of cement. Date: _____
(top) (bottom) (top) (bottom)Do you have a valid Oil & Gas Lease? ☐ Yes ☐ NoDepth and Type: ☐ Junk in Hole at _____ ☐ Tools in Hole at _____ Casing Leaks: ☐ Yes ☐ No Depth of casing leak(s): _____
(depth) (depth)Type Completion: ☐ ALT. I ☐ ALT. II Depth of: ☐ DV Tool: _____ w / _____ sacks of cement ☐ Port Collar: _____ w / _____ sack of cement
(depth) (depth)

Packer Type: _____ Size: _____ Inch Set at: _____ Feet

Total Depth: _____ Plug Back Depth: _____ Plug Back Method: _____

Geological Data:**Formation Name**

Formation Top Formation Base

Completion Information

1. _____ At: _____ to _____ Feet Perforation Interval _____ to _____ Feet or Open Hole Interval _____ to _____ Feet

2. _____ At: _____ to _____ Feet Perforation Interval _____ to _____ Feet or Open Hole Interval _____ to _____ Feet

UNDER PENALTY OF PERJURY I HEREBY ATTEST THAT THE INFORMATION CONTAINED HEREIN IS TRUE AND CORRECT TO THE BEST OF MY KNOWLEDGE


Submitted Electronically

**Do NOT Write in This
Space - KCC USE ONLY**

Date Tested: _____ Results: _____ Date Plugged: _____ Date Repaired: _____ Date Put Back in Service: _____

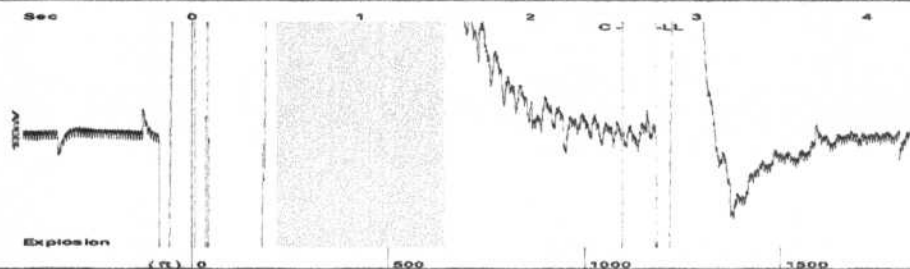
Review Completed by: _____ Comments: _____

TA Approved: ☐ Yes ☐ Denied Date: _____**Mail to the Appropriate KCC Conservation Office:**

	KCC District Office #1 - 210 E. Frontview, Suite A, Dodge City, KS 67801	Phone 620.682.7933
	KCC District Office #2 - 3450 N. Rock Road, Building 600, Suite 601, Wichita, KS 67226	Phone 316.337.7400
	KCC District Office #3 - 137 E. 21st St., Chanute, KS 66720	Phone 620.902.6450
	KCC District Office #4 - 2301 E. 13th Street, Hays, KS 67601-2651	Phone 785.261.6250

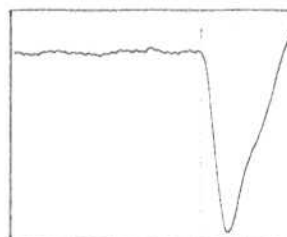
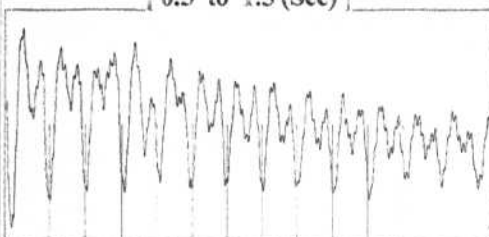
Volkland #7

Group: MyWells Well: Volkland (acquired on: 09/21/18 13:01:56)



Filter Type High Pass Automatic Collar Count Yes Time 2.757 sec
Manual Acoustic Veloc 866.12 ft/s Manual JTS/sec 13.6612 Joints 37.3545 Jts
Depth 1184.14 ft

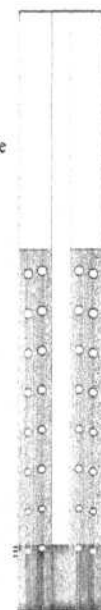
[0.5 to 1.5 (Sec)]



Analysis Method: Automatic

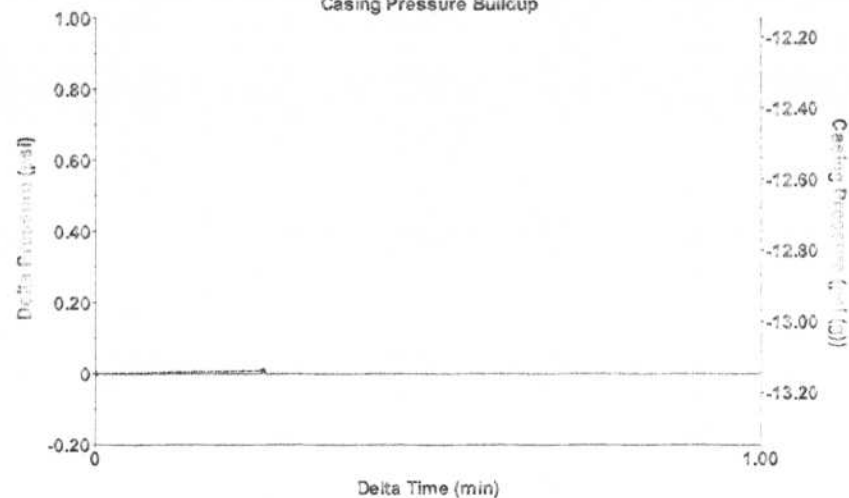
Group: MyWells Well: Volkland (acquired on: 09/21/18 13:01:56)

Production		Potential	Casing Pressure	Producing
Current				
Oil 2	-*- BBL/D	-13.1 psi (g)		
Water 700	-*- BBL/D	Casing Pressure Buildup		
Gas -*-	-*- Mscf/D	0.009 psi		
		0.25 min		
IPR Method	Vogel	Gas/Liquid Interface Pressure		
PBHP/SBHP	-*-	-13.1 psi (g)		
Production Efficiency	0.0			
		Liquid Level Depth		
Oil 60 deg.API		1184.14 ft		
Water 1.05 Sp.Gr.H2O		Pump Intake Depth		
Gas 1.12 Sp.Gr.AIR		3150.00 ft		
Acoustic Velocity	859.003 ft/s	Formation Depth		
		3190.00 ft		
		Pump Intake		
Formation Submergence		550.5 psi (g)		
Total Gaseous Liquid Column HT (TVD)	1966 ft	Producing BHP		
Equivalent Gas Free Liquid HT (TVD)	1966 ft	568.7 psi (g)		
Acoustic Test		Static BHP		
		-*- psi (g)		



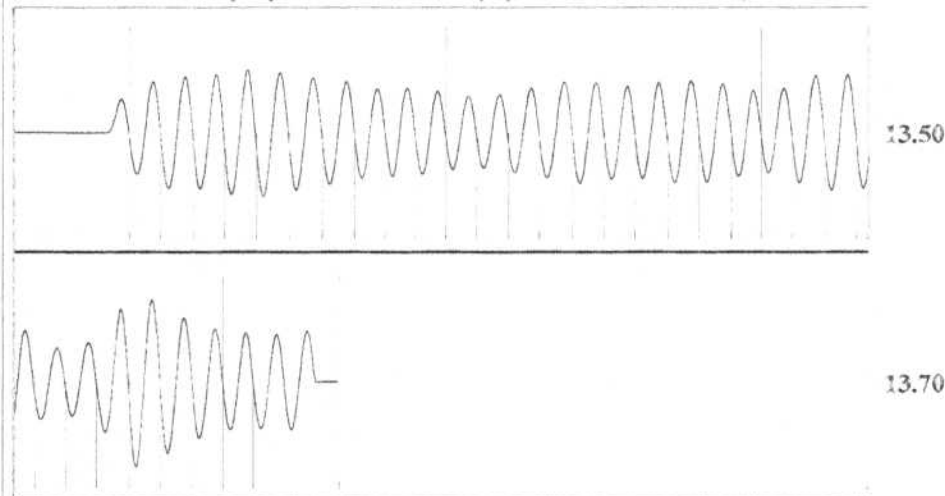
Group: MyWells Well: Volkland (acquired on: 09/21/18 13:01:56)

Casing Pressure Buildup



Change in Pressure 0.01 psi PT6974
Change in Time 0.25 min Range 0 - 7 psi

Group: MyWells Well: Volkland (acquired on: 09/21/18 13:01:56)



Acoustic Velocity 859.003 ft/s Joints counted 31
Joints Per Second 13.549 jts/sec Joints to liquid level 37.3545
Depth to liquid level 1184.14 ft Filter Width 11.6612 15.6612
Automatic Collar Count Yes Time to 1st Collar 0.268 2.556

STATE OF KANSAS

CORPORATION COMMISSION
CONSERVATION DIVISION
DISTRICT OFFICE No. 2
3450 N. ROCK ROAD
BUILDING 600, SUITE 601
WICHITA, KS 67226



PHONE: 316-337-7400
FAX: 316-630-4005
<http://kcc.ks.gov/>

GOVERNOR JEFF COLYER, M.D.

SHARI FEIST ALBRECHT, CHAIR | JAY SCOTT EMLER, COMMISSIONER | DWIGHT D. KEEN, COMMISSIONER

September 25, 2018

Mike Kelso
Mike Kelso Oil, Inc.
PO BOX 467
CHASE, KS 67524-0467

Re: Temporary Abandonment
API 15-159-22770-00-00
VOLKLAND A 7
NW/4 Sec.27-18S-10W
Rice County, Kansas

Dear Mike Kelso:

"Your temporary abandonment (TA) application for the well listed above has been approved. In accordance with K.A.R. 82-3-111 the TA status of this well will expire 09/19/2019.

- * If you return this well to service or plug it, please notify the District Office.
- * If you sell this well you are required to file a Transfer of Operator form, T-1.
- * If the well will remain temporarily abandoned, you must submit a new TA application, CP-111, before 09/19/2019.

You may contact me at the number above if you have questions.

Very truly yours,

Virgil Clothier"