

KANSAS CORPORATION COMMISSION
OIL & GAS CONSERVATION DIVISION

TEMPORARY ABANDONMENT WELL APPLICATION

OPERATOR: License#
Name:
Address 1:
Address 2:
City: State: Zip:
Contact Person:
Phone:
Contact Person Email:
Field Contact Person:
Field Contact Person Phone:

API No. 15-
Spot Description:
Sec. Twp. S. R.
feet from N / S Line of Section
feet from E / W Line of Section
GPS Location: Lat: , Long:
Datum: NAD27 NAD83 WGS84
County: Elevation: GL KB
Lease Name: Well #:
Well Type: (check one) Oil Gas OG WSW Other:
SWD Permit #: ENHR Permit #:
Gas Storage Permit #:
Spud Date: Date Shut-In:

Table with 7 columns: Conductor, Surface, Production, Intermediate, Liner, Tubing. Rows include Size, Setting Depth, Amount of Cement, Top of Cement, Bottom of Cement.

Casing Fluid Level from Surface: How Determined? Date:
Casing Squeeze(s): to w / sacks of cement, to w / sacks of cement. Date:
Do you have a valid Oil & Gas Lease? Yes No
Depth and Type: Junk in Hole at Tools in Hole at Casing Leaks: Yes No Depth of casing leak(s):
Type Completion: ALT. I ALT. II Depth of: DV Tool: w / sacks of cement Port Collar: w / sack of cement
Packer Type: Size: Inch Set at: Feet
Total Depth: Plug Back Depth: Plug Back Method:

Geological Data:

Table with 4 columns: Formation Name, Formation Top, Formation Base, Completion Information. Rows 1 and 2.

UNDER PENALTY OF PERJURY I HEREBY ATTEST THAT THE INFORMATION CONTAINED HEREIN IS TRUE AND CORRECT TO THE BEST OF MY KNOWLEDGE

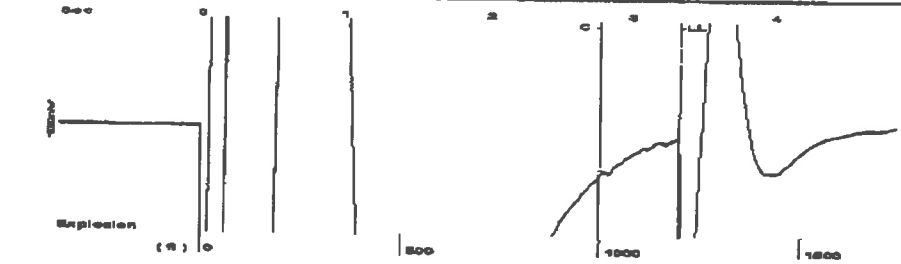
Submitted Electronically

Do NOT Write in This Space - KCC USE ONLY
Date Tested: Results: Date Plugged: Date Repaired: Date Put Back in Service:
Review Completed by: Comments:
TA Approved: Yes Denied Date:

Mail to the Appropriate KCC Conservation Office:

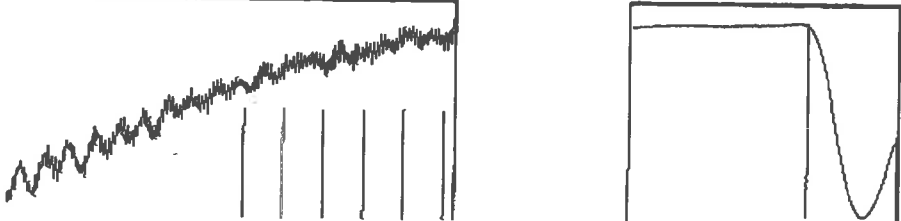
Table with 3 columns: District Office, Address, Phone. Rows for District Office #1, #2, #3, #4.

Group: Belgre Well: Anthony 1-12 (acquired on: 01/08/19 10:10:17)



Filter Type High Pass Automatic Collar Count Yes Time 3.339 sec  
 Manual Acoustic Veloc 720.415 f/s Manual JTS/sec 11.534 Joints 38.3164 Jts  
 Depth 1196.62 ft

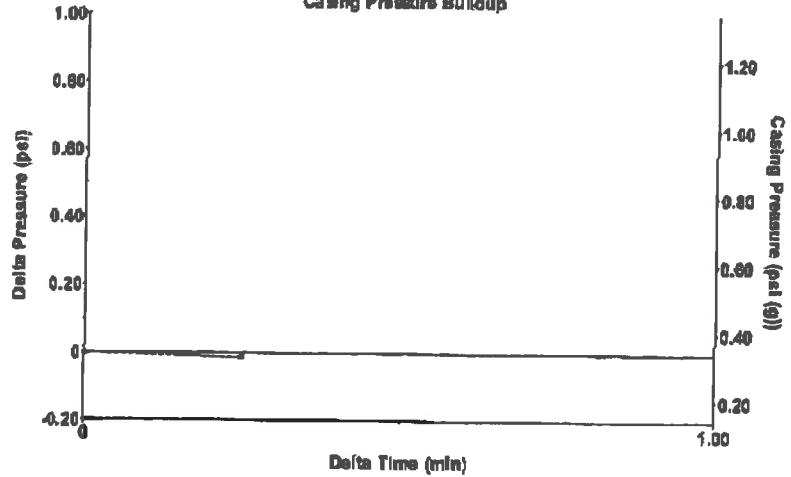
[ 1.5 to 2.5 (Sec) ]



Analysis Method: Automatic

Group: Belgre Well: Anthony 1-12 (acquired on: 01/08/19 10:10:17)

Casing Pressure Buildup

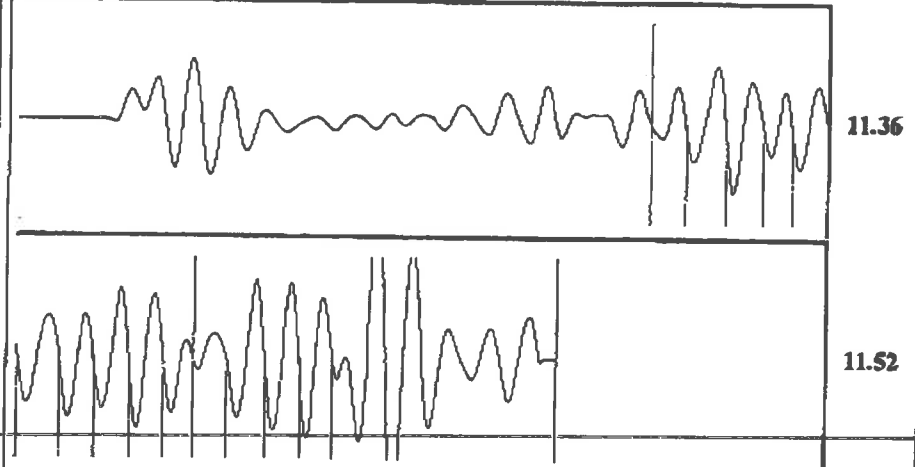


Change in Pressure -0.01 psi PT13440  
 Change in Time 0.25 min Range 0 - 9 psi

Group: Belgre Well: Anthony 1-12 (acquired on: 01/08/19 10:10:17)

<b>Production</b>	<b>Potential</b>	<b>Casing Pressure</b>	<b>Producing</b>
Current		0.3 psi (g)	
Oil -.-	-.- BBL/D	Casing Pressure Buildup	Annular Gas Flow
Water -.-	-.- BBL/D	-0.013 psi	0 Mcf/D
Gas -.-	-.- Msc/D	0.25 min	% Liquid
		Gas/Liquid Interface Pressure	100 %
		1.1 psi (g)	
<b>IPR Method</b>	<b>Vogel</b>	<b>Liquid Level Depth</b>	<b>Pump Intake</b>
PBHP/SBHP	-.-	1196.62 ft	933.4 psi (g)
Production Efficiency	0.0	<b>Pump Intake Depth</b>	<b>Producing BHP</b>
		4060.00 ft	841.6 psi (g)
Oil 40 deg.API		<b>Formation Depth</b>	<b>Static BHP</b>
Water 1.05 Sp.Gr.H2O		3757.00 ft	-.- psi (g)
Gas 1.23 Sp.Gr.AIR			
Acoustic Velocity	716.754 f/s		
<b>Formation Submergence</b>			
Potential Gaseous Liquid Column HT (TVD)	2863 ft		
Equivalent Gas Free Liquid HT (TVD)	2863 ft		

Group: Belgre Well: Anthony 1-12 (acquired on: 01/08/19 10:10:17)



Acoustic Velocity 716.754 f/s Joints counted 14  
 Joints Per Second 11.4754 jts/sec Joints to liquid level 38.3164  
 Depth to liquid level 1196.62 ft Filter Width 9.53403 13.534  
 Automatic Collar Count Yes Time to 1st Collar 1.564 2.784

# STATE OF KANSAS

CORPORATION COMMISSION  
CONSERVATION DIVISION  
DISTRICT No. 1  
210 E. FRONTVIEW, SUITE A  
DODGE CITY, KS 67801



PHONE: 620-682-7933  
<http://kcc.ks.gov/>

GOVERNOR JEFF COLYER, M.D.

SHARI FEIST ALBRECHT, CHAIR | JAY SCOTT EMLER, COMMISSIONER | DWIGHT D. KEEN, COMMISSIONER

January 15, 2019

Loveness Mpanje  
F. G. Holl Company L.L.C.  
9431 E CENTRAL STE 100  
WICHITA, KS 67206-2563

Re: Temporary Abandonment  
API 15-145-21570-00-00  
ANTHONY 1-12  
SE/4 Sec.12-23S-15W  
Pawnee County, Kansas

Dear Loveness Mpanje:

"Your temporary abandonment (TA) application for the well listed above has been approved. In accordance with K.A.R. 82-3-111 the TA status of this well will expire 01/15/2020.

- \* If you return this well to service or plug it, please notify the District Office.
- \* If you sell this well you are required to file a Transfer of Operator form, T-1.
- \* If the well will remain temporarily abandoned, you must submit a new TA application, CP-111, before 01/15/2020.

You may contact me at the number above if you have questions.

Very truly yours,

Michael Maier"