

KANSAS CORPORATION COMMISSION
OIL & GAS CONSERVATION DIVISION

Form must be Typed
Form must be signed

TEMPORARY ABANDONMENT WELL APPLICATION

All blanks must be complete

OPERATOR: License#
Name:
Address 1:
Address 2:
City: State: Zip:
Contact Person:
Phone:
Contact Person Email:
Field Contact Person:
Field Contact Person Phone:

API No. 15-
Spot Description:
Sec. Twp. S. R.
feet from N / S Line of Section
feet from E / W Line of Section
GPS Location: Lat: , Long:
Datum: NAD27 NAD83 WGS84
County: Elevation: GL KB
Lease Name: Well #:
Well Type: Oil Gas OG WSW Other:
SWD Permit #: ENHR Permit #:
Gas Storage Permit #:
Spud Date: Date Shut-In:

Table with 7 columns: Conductor, Surface, Production, Intermediate, Liner, Tubing. Rows include Size, Setting Depth, Amount of Cement, Top of Cement, Bottom of Cement.

Casing Fluid Level from Surface: How Determined? Date:
Casing Squeeze(s): to w / sacks of cement, to w / sacks of cement. Date:
Do you have a valid Oil & Gas Lease? Yes No
Depth and Type: Junk in Hole at Tools in Hole at Casing Leaks: Yes No Depth of casing leak(s):
Type Completion: ALT. I ALT. II Depth of: DV Tool: w / sacks of cement Port Collar: w / sack of cement
Packer Type: Size: Inch Set at: Feet
Total Depth: Plug Back Depth: Plug Back Method:

Geological Data:

Table with 4 columns: Formation Name, Formation Top, Formation Base, Completion Information. Rows 1 and 2.

UNDER PENALTY OF PERJURY I HEREBY ATTEST THAT THE INFORMATION CONTAINED HEREIN IS TRUE AND CORRECT TO THE BEST OF MY KNOWLEDGE

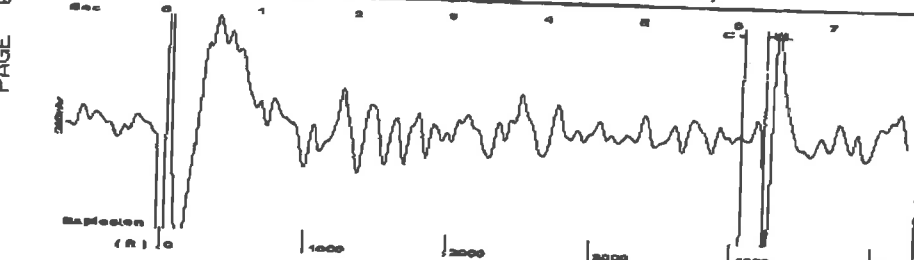
Submitted Electronically

Do NOT Write in This Space - KCC USE ONLY
Date Tested: Results: Date Plugged: Date Repaired: Date Put Back in Service:
Review Completed by: Comments:
TA Approved: Yes Denied Date:

Mail to the Appropriate KCC Conservation Office:

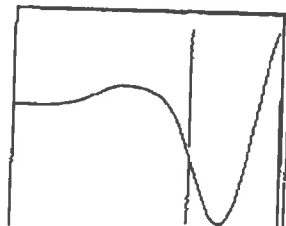
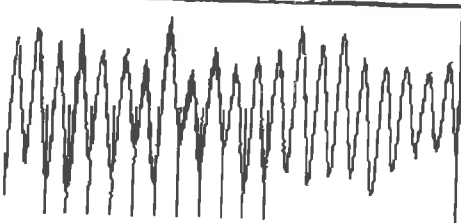
Table with 3 columns: District Office, Address, Phone. Rows for District Office #1, #2, #3, #4.

Group: Belpre Well: Enlow 7-36 (acquired on: 11/14/18 08:36:14)



Filter Type High Pass
 Manual Acoustic Velocity 1307.31 ft/s
 Automatic Collar Count Yes
 Manual JTS/sec 20.8768
 Time 6.319 sec
 Joints 134.91 Jts
 Depth 4224.03 ft

[1.5 to 2.5 (Sec)]



Analysis Method: Automatic

Group: Belpre Well: Enlow 7-36 (acquired on: 11/14/18 08:36:14)

Production
 Current Potential
 Oil -.- EBL/D
 Water -.- BBL/D
 Gas -.- Mscf/D
 IPR Method Vogel
 PBHP/SBHP -.-
 Production Efficiency 0.0

Oil 40 deg.API
 Water 1.05 Sp.Gr.H2O
 Gas 0.66 Sp.Gr.AIR
 Acoustic Velocity 1336.93 ft/s

Casing Pressure 186.2 psi (g)
 Casing Pressure Buildup 1.0 psi
 2.25 min
 Gas/Liquid Interface Pressure 206.1 psi (g)
 Liquid Level Depth 4224.03 ft
 Pump Intake Depth 4290.00 ft
 Formation Depth 4246.00 ft

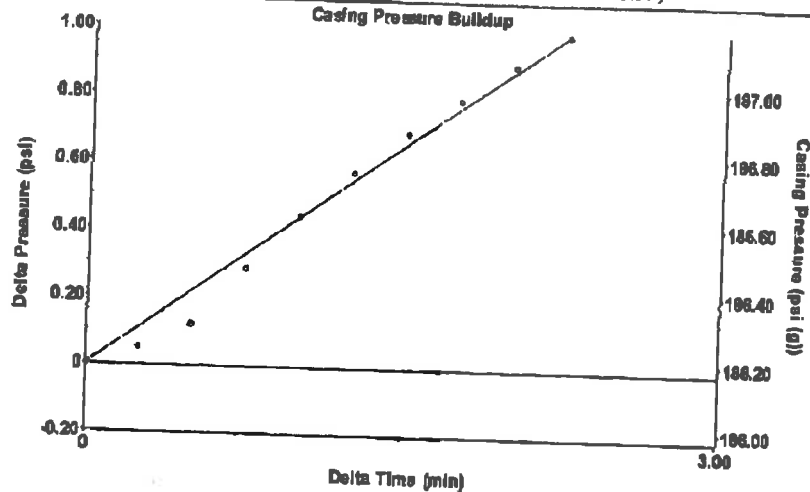
66 ft
 60 ft

Producing
 Annular Gas Flow 6 Mscf/D
 % Liquid 72 %
 Pump Intake 226.0 psi (g)
 Producing BHP 211.4 psi (g)
 Static BHP -.- psi (g)

Formation Submergence
 Total Gaseous Liquid Column HT (TVD)
 Equivalent Gas Free Liquid HT (TVD)

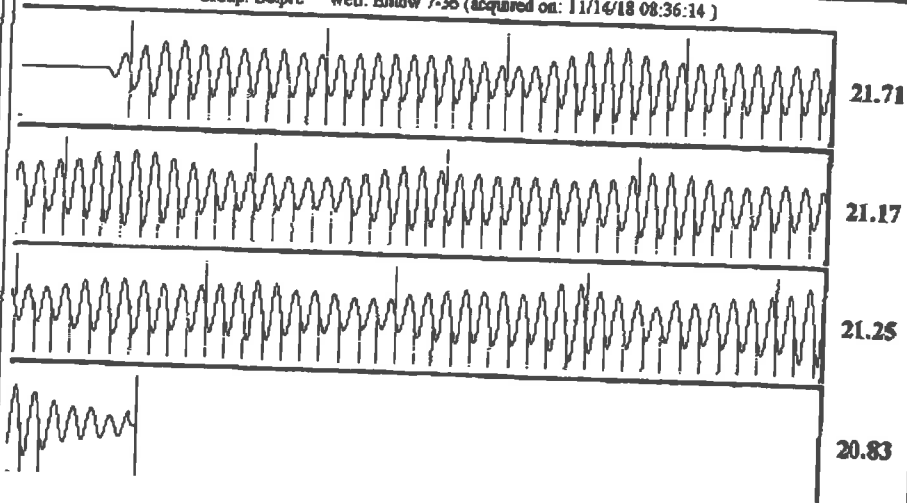
Acoustic Test

Group: Belpre Well: Enlow 7-36 (acquired on: 11/14/18 08:36:14)



Change in Pressure 0.99 psi
 Change in Time 2.25 min
 PT13440
 Range 0-1 psi

Group: Belpre Well: Enlow 7-36 (acquired on: 11/14/18 08:36:14)



Acoustic Velocity 1336.93 ft/s
 Joints Per Second 21.3499 Jts/sec
 Depth to liquid level 4224.03 ft
 Automatic Collar Count Yes
 Joints counted 124
 Joints to liquid level 134.91
 Filter Width 18.8768
 Time to 1st Collar 0.272
 22.8768
 6.08

6209953323

12:28

11/14/2018

STATE OF KANSAS

CORPORATION COMMISSION
CONSERVATION DIVISION
DISTRICT No. 1
210 E. FRONTVIEW, SUITE A
DODGE CITY, KS 67801



PHONE: 620-682-7933
<http://kcc.ks.gov/>

GOVERNOR JEFF COLYER, M.D.

SHARI FEIST ALBRECHT, CHAIR | JAY SCOTT EMLER, COMMISSIONER | DWIGHT D. KEEN, COMMISSIONER

November 20, 2018

Loveness Mpanje
F. G. Holl Company L.L.C.
9431 E CENTRAL STE 100
WICHITA, KS 67206-2563

Re: Temporary Abandonment
API 15-047-21446-00-00
ENLOW 7-36
SE/4 Sec.36-24S-16W
Edwards County, Kansas

Dear Loveness Mpanje:

"Your temporary abandonment (TA) application for the well listed above has been approved. In accordance with K.A.R. 82-3-111 the TA status of this well will expire 11/20/2019.

- * If you return this well to service or plug it, please notify the District Office.
- * If you sell this well you are required to file a Transfer of Operator form, T-1.
- * If the well will remain temporarily abandoned, you must submit a new TA application, CP-111, before 11/20/2019.

You may contact me at the number above if you have questions.

Very truly yours,

Michael Maier"