

Janel Staab
Consulting Petroleum Geologist

2428 Toulon Ave
Hays, KS 67601
Phone: 785-625-4311
Cell Phone: 785-635-1660
janel1969@gmail.com

GEOLOGIST'S WELL REPORT

COMPANY Staab Oil Company # 6037
WELL Hoffman #1
FIELD Schmeidler Southeast
LOCATION (legal) N.W., SE, SW, SW 550' FSL 750' FWL
Section 20 TWP 12S RGE 17W
(Map) 1/2 mile E & 3 mile N of Catherine, Kansas
COUNTY Ellis STATE Kansas
ELEVATION: 2125' K.B., 2120' G.L.

Depths measured from Kelly Bushing

A. P. I. NUMBER 15-051-26901-00
GEOLOGY BY Janel Staab

PERTINENT WELL DATA

CONTRACTOR Shields Drilling Co. #5184

RIG #1 HYDRAULICS Bethlehem 225 6x14

DRILL PIPE 4 1/2" X-H COLLARS 6 1/4" X223

CASING: SURFACE 8 5/8" @ 208 w/150 SX common

PRODUCTION 5 1/2" @ 3675' w/150 SX common

DRILLING FLUID: COMPANY Mud-Co/Service Mud Inc

TYPE: Full Service Gary Schmidtberger

REMARKS: Chemical

DRILLSTEM TESTS: COMPANY Trilobite Testing

NUMBER OF TESTS 4 Brannon Lonsdale

ELECTIC LOGS: COMPANY ELI

DETAIL (5") 2900' - RTD

TYPE D.I, Comp. N-D, Micro

DRILLING TIME FROM 3040' TO RTD

SAMPLE TIME FROM 3040' TO RTD

SUPERVISION FROM 3040' TO RTD

VERTICAL DEVIATION _____

PLUGGING REPORT _____

RESERVE PIT _____

DAILY REPORT

DATE:	7 a.m. Depth	RIG ACTIVITY
12/08/17	noon	SPUD
12/09/17	209'	W.O.C.
12/10/17	986'	Drilling shale + Limestone
12/11/17	1571'	Drilling sh. Ls + sand
12/12/17	2291'	Drilling shale + Limestone
12/13/17	2907'	Drilling shale + Limestone
12/14/17	3308'	Drilling lower Topok
12/15/17	3345'	Rig broke down
1/03/18	3345'	Rig starting back up
1/04/18	3400'	drilling LKc
1/05/18	3600'	drilling BKc
1/06/18	3655'	finishing DST #4

T.O. 3675'

DRILL STEM TESTS

NO	INTERVAL	IFP/TIME	ISIP/TIME	FFP/TIME	FSIP/TIME	IHP/FHP	RECOVERY
1	Case of 70psi 3274- 3315	15# 15# 15'	1039# 60"	94# 93# 75"	---	1610# 1587#	139' mud 100% 0 Oil spots in tool
2	UC.D.E 3104- 3173	36# 48# 5'	703# 60"	56# 159# 60"	662# 90"	1781# 1663#	279' GOCM 100% 31' GIP
3	Arbuckle 3627- 3655						Packer Failure
4	Arbuckle 3598- 3655	29# 31# 5'	1074# 60"	36# 41# 60"	Trapped hydro pulling 90' slip	1929# 1861#	30' Mud 3' CC
5							
6							
7							

MUD RECORD

CHK	DEPTH	WT	VIS	FIL	CHL	YP	LCM
1	986'	8.9	28	NC	1200	-	Nil
2	2291'	9.3	29	NC	3000	-	Nil
3	2907'	8.6	60+	6.8	5600	35	2
4	3308'	9.0	48	7.2	9400	27	2
5	3345'	9.1	42	18.2	10600	17	TF
6	3417'	9.0	60+	6.8	10400	32	2
7	3636'	9.3	48	11.6	18000	21	2
8	3675'	9.4	42	13.2	20000	19	1
9							
10							
11							

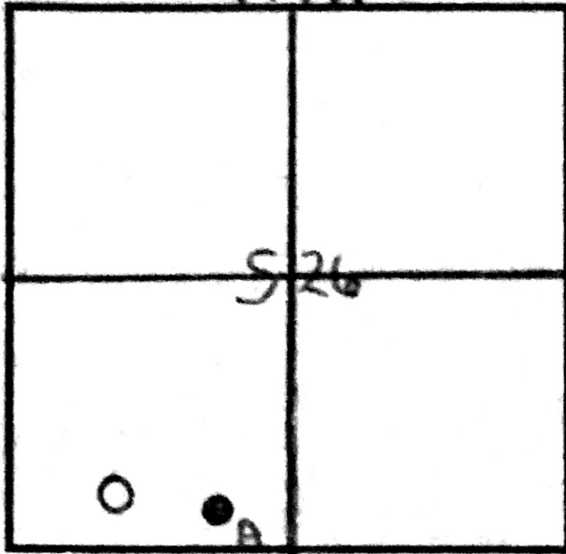
BIT RECORD

NO	SIZE	MAKE	TYPE	DEPTH	FEET	HOURS
1	12 3/4"	Reed	Mill tooth	209'	209'	
2	7 7/8"	Reed	S-52	3675'	3466'	
3						
4						
5						
6						
7						

FORMATION TOPS & STRUCTURAL GEOLOGY

R 17W

REFERRED TO:



- A: Hoffman Leikam #1
- B: KB 2130
- C: _____
- D: _____
- E: _____

T
12
S

STRATIGRAPHIC MARKERS	SUBJECT WELL			STRUCTURAL POSITION				
	SAMPLE	E. LOG	DATUM	A	B	C	D	E
Anhydrite	1310'	1307'	+ 818	+ 816				
Base	1351'	1351'	+ 774	+ 776				
Topeka	3093	3092	- 967	- 967				
Heeb. SH	3337	3336	- 1211	- 1209				
Toronto	3357	3355	- 1230	- 1233				
Lansing	3380	3381	- 1256	- 1259				
BKc	3618	3617	- 1492	- 1492				
Arbuckle	3646	3646	- 1521	- 1528				
T.O.	3675	3675	- 1550	- 1621				

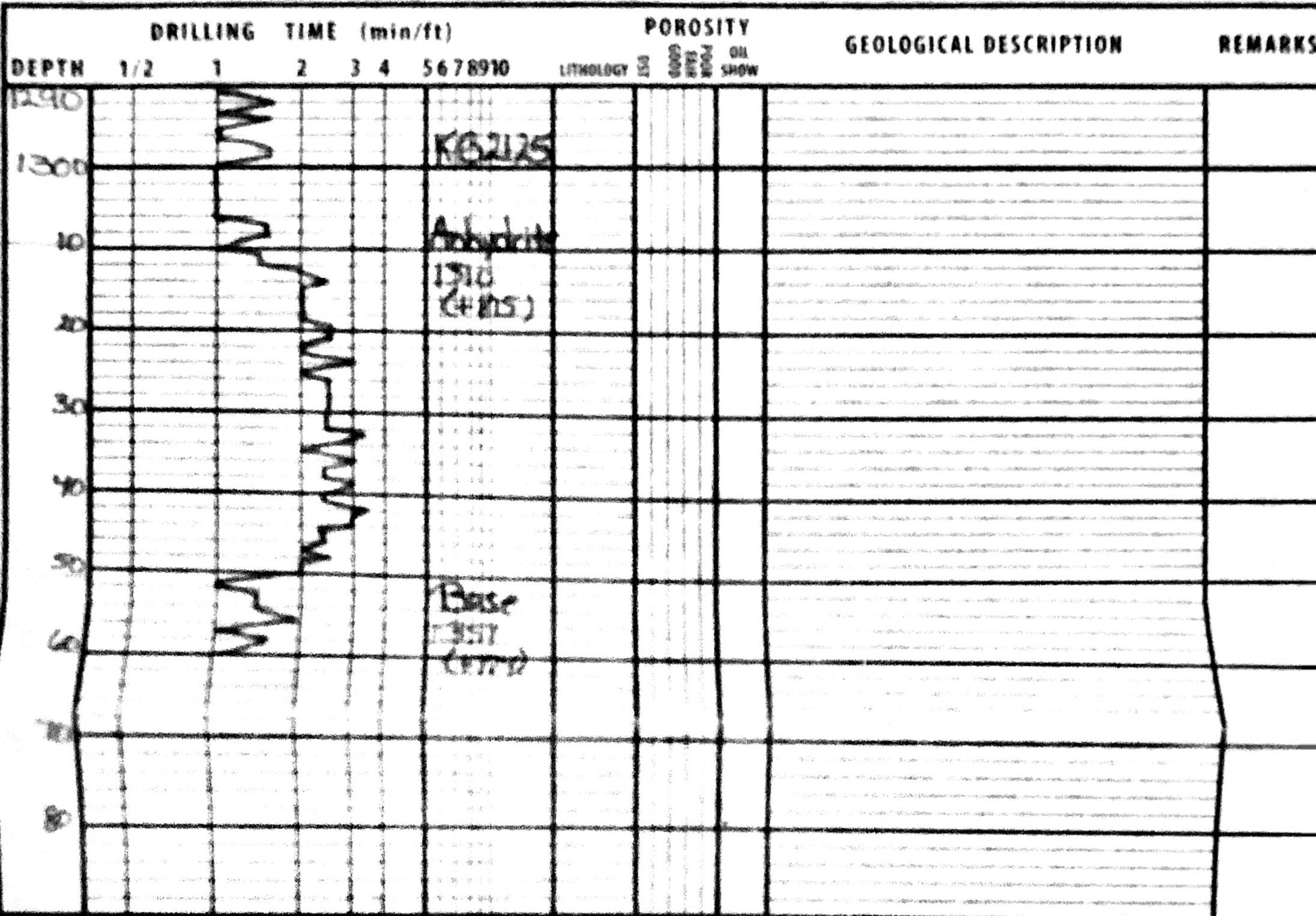
SUMMARY

The Hoffman #1 was drilled using Shields Rig.
Location was S28, T12S, R17W in Ellis County, Kansas
Drilling started on 12/08/07 and had mechanical breakdown
on 12/15/07. Drilling stopped for repair and resumed drilling
on 1/03/18. Pipe was set on 1/07/18.

3.0 Seismic indicated that this location was
stratigraphically high compared to surrounding locations.

4. DSTs were performed as well as logs run. As a
result production pipe were run and focus area will
be the Arbuckle.

Paul Seal

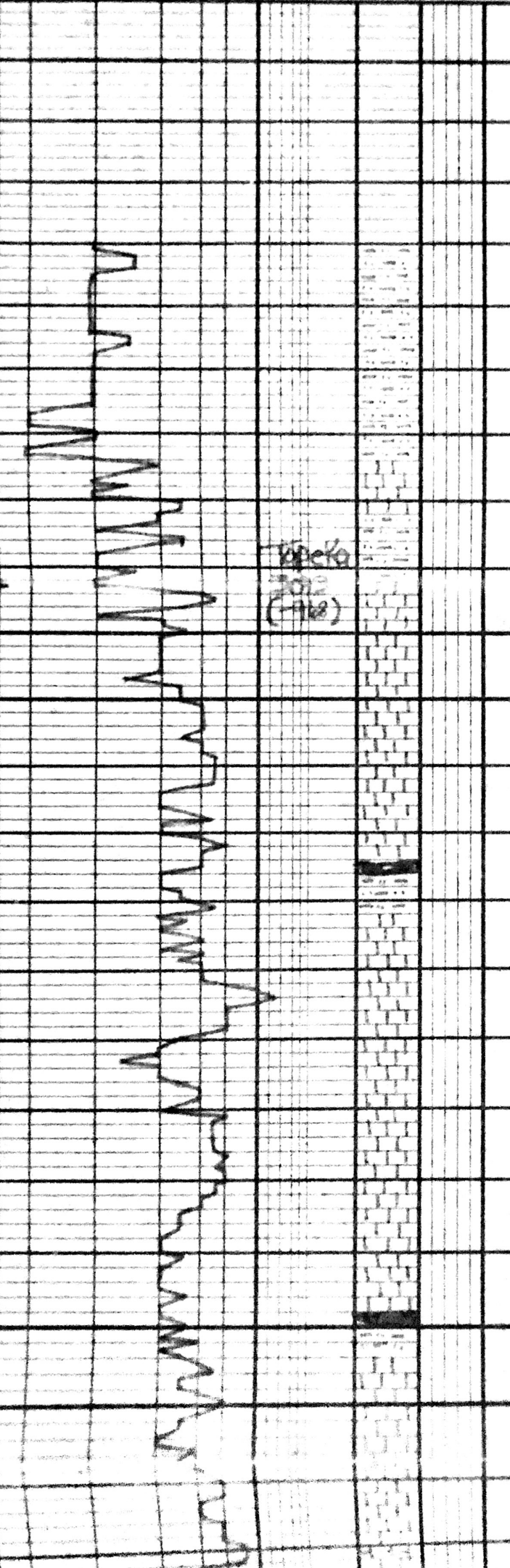


K62125

Anhydrite
1310
(#815)

Base
357
(RTD)

3000
10
20
30
40
50
60
70
80
90
3100
10
20
30
40
50
60
70
80
90
3200
10
20
30



sh. stst. gry. brn. green

ls tan. brn. gry. frsth

sh. stst. gry. brn green

ls off wh. gry. brn frsth

ls A/A

ls off wh. gry. brn frsth sticky

sh. Dnk. gry
sh. stst. gry. brn

ls off wh. gry. brn frsth

ls off wh. brn. gry. frsth
fossilifer

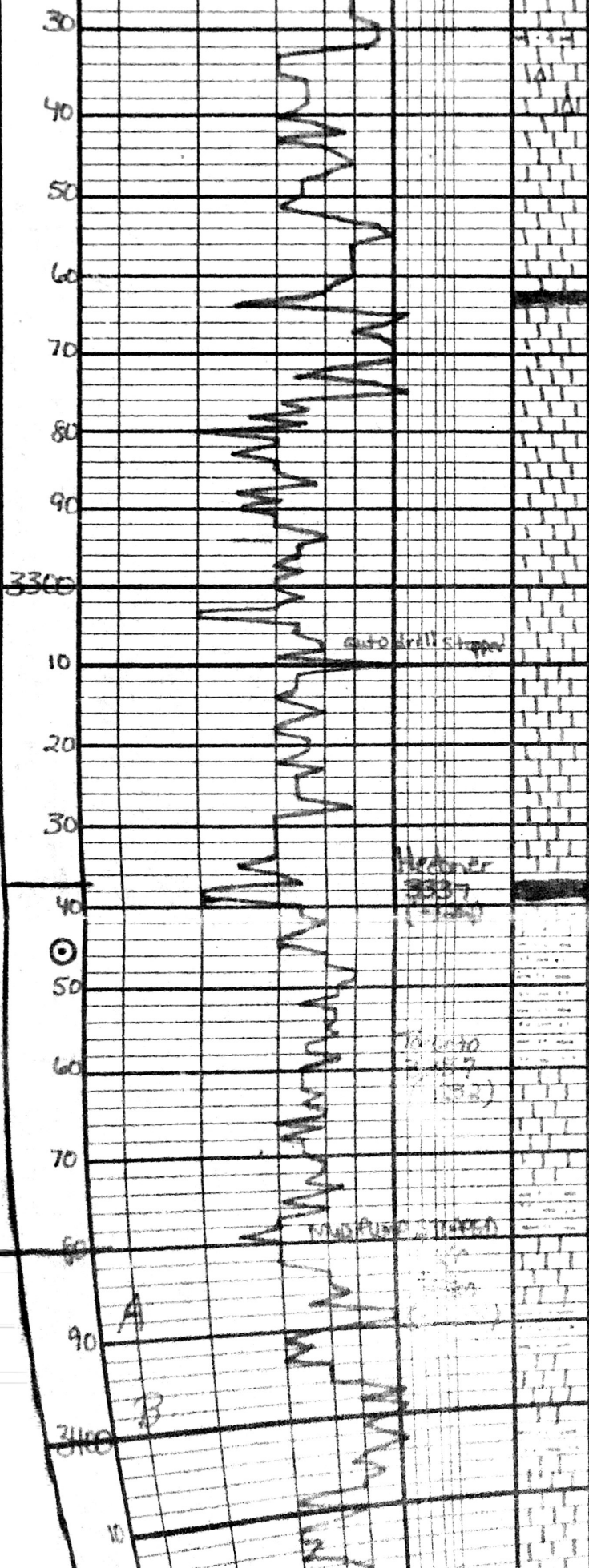
ls A/A

sh. Bk
sh. stst. gry. brn
ls tan. gry. brn frsth

ls A/A

sh. stst. gry. brn green

500 on location
30 P.M.
12-17-77



Sh + silstn - gry - brn - green
 Ls tan - gry - frxn fossil
 sl cherty pyrite sl cherty

Ls off wh - gry frxn

Ls off wh - gry - frxn sl pyrite
 sl cherty

Blk sh

Ls tan - gry - frxn

Ls tan - gry frxn sl cherty

Ls A/A

● Ls tan - frxn - fr - good Interpart
 good s.f.o. good odor good oil sat

● Ls tan - frxn - fr - good Interpart
 good s.f.o. strong odor good oil sat

● Ls tan - frxn - fr - good Interpart
 good s.f.o. good odor good oil sat

DST #1
 bottom 1000
 3294 - 3375
 15.60-75
 Rec 10/11
 FD 15 17/20
 SIP 1031 -
 pulled test
 bad pressure
 reading Rig
 breakdown

Sh Blk Carb fissile

Ls tan - gry frxn

Sh + silstn - brn - gry - green
 very pyrite

○ Ls tan - gry frxn - fr - Interpart
 fossil - very pyrite sl cherty no odor

○ Ls tan - gry frxn - poor - fr Interpart
 sl stn no odor very pyrite sl cherty

Ls off wh - gry - frxn - sl cherty
 sl pyrite

Sh + silstn - gry brn

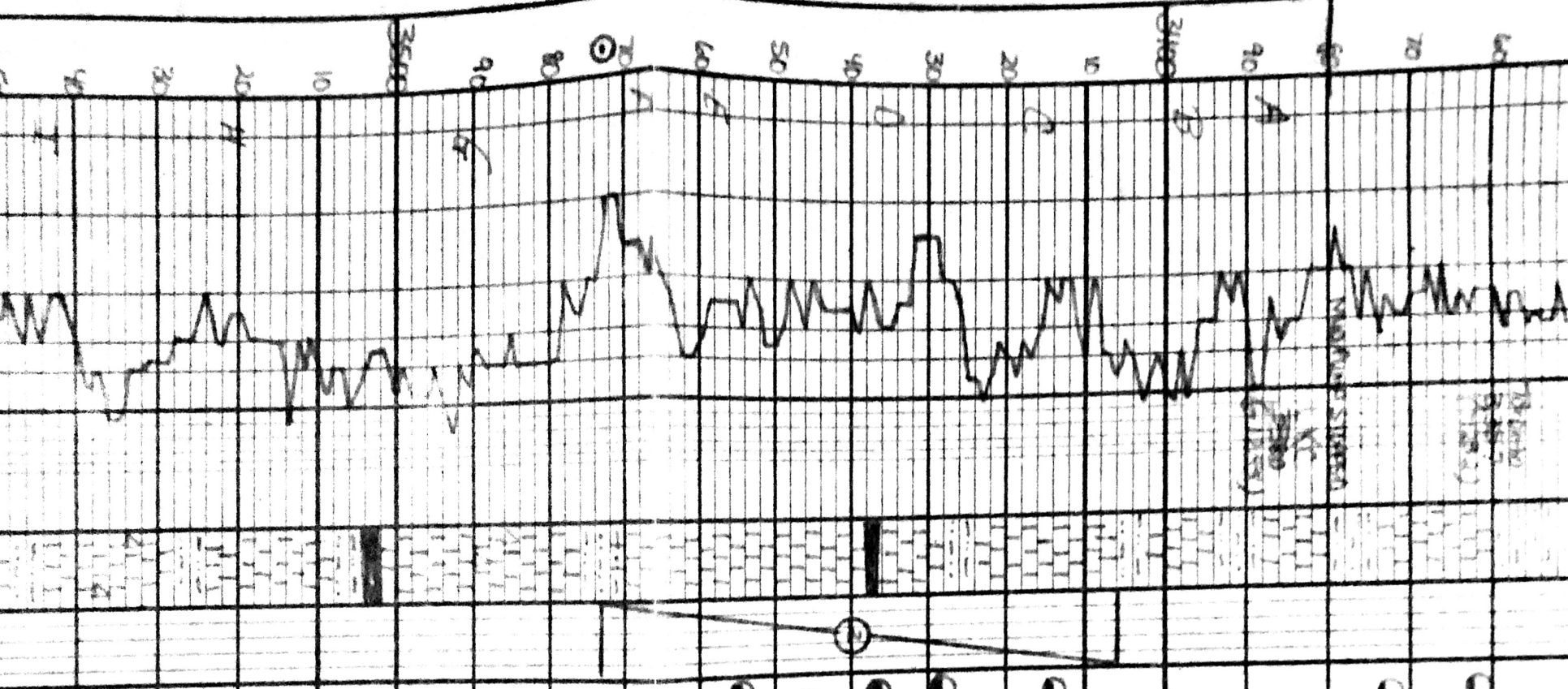
off - ls frxn sl cherty

Sh + silstn - gry brn - green

Ls off wh frxn sl cherty sl pyrite

○ Ls off wh frxn - poor - fr Interpart
 sl s.f.o. no odor very cherty pyrite

DST #2
 REC C-F
 3106 - 3473
 5.60-60.90
 Rec 10/11



very purple

LS: fine grey fossiliferous. Interbedded w/ sh. Siltstone. no color fossil. Very purple siltstone

LS: fine grey fossiliferous. No. P. Interbedded w/ sh. Siltstone. no color very purple siltstone

LS: off white grey. fossiliferous. siltstone
sh. purple

sh + siltstone. grey bn.

off ls. fossiliferous siltstone
sh + siltstone. grey bn. green

LS: off white fossiliferous. purple. Interbedded w/ sh. Siltstone. no color very purple purple

sh + siltstone. grey bn. green
LS: off white. fossiliferous. good calcareous. Interbedded w/ sh. Siltstone. no color very purple siltstone

LS: off white. fossiliferous. good calcareous. Interbedded w/ sh. Siltstone. no color very purple siltstone

LS: off white. fossiliferous. good calcareous. Interbedded w/ sh. Siltstone. no color very purple siltstone

sh + siltstone. grey bn. green
LS: off white. fossiliferous. good calcareous. Interbedded w/ sh. Siltstone. no color very purple siltstone

sh + siltstone. grey bn. green
LS: off white. fossiliferous. good calcareous. Interbedded w/ sh. Siltstone. no color very purple siltstone

LS: off white. fossiliferous. good calcareous. Interbedded w/ sh. Siltstone. no color very purple siltstone

LS: off white. fossiliferous. good calcareous. Interbedded w/ sh. Siltstone. no color very purple siltstone

sh. dirty grey
sh + siltstone. bn. green
LS: off white. fossiliferous. good calcareous. Interbedded w/ sh. Siltstone. no color very purple siltstone

sh. grey bn. green
LS: off white. fossiliferous. good calcareous. Interbedded w/ sh. Siltstone. no color very purple siltstone

sh. off white. fossiliferous. good calcareous. Interbedded w/ sh. Siltstone. no color very purple siltstone

sh. siltstone. grey bn. green
LS: off white. fossiliferous. good calcareous. Interbedded w/ sh. Siltstone. no color very purple siltstone

DST #2

LTC C-1

3406-3413

5-60-10-90

Ref

37' 50CM

10000 9800

21' 6 IP

10-21-90

SIP 100-103

LS off white fossils - fossiliferous
 shale - some greenish grey
 shale - some greenish grey
 shale - some greenish grey

LS off white fossils - fossiliferous shale

LS off white fossils - fossiliferous shale

LS off white fossils - fossiliferous shale

LS off white fossils - fossiliferous shale

LS off white fossils - fossiliferous shale

LS off white fossils - fossiliferous shale

LS off white fossils - fossiliferous shale

LS off white fossils - fossiliferous shale

LS off white fossils - fossiliferous shale

LS off white fossils - fossiliferous shale

LS off white fossils - fossiliferous shale

LS off white fossils - fossiliferous shale

LS off white fossils - fossiliferous shale

LS off white fossils - fossiliferous shale

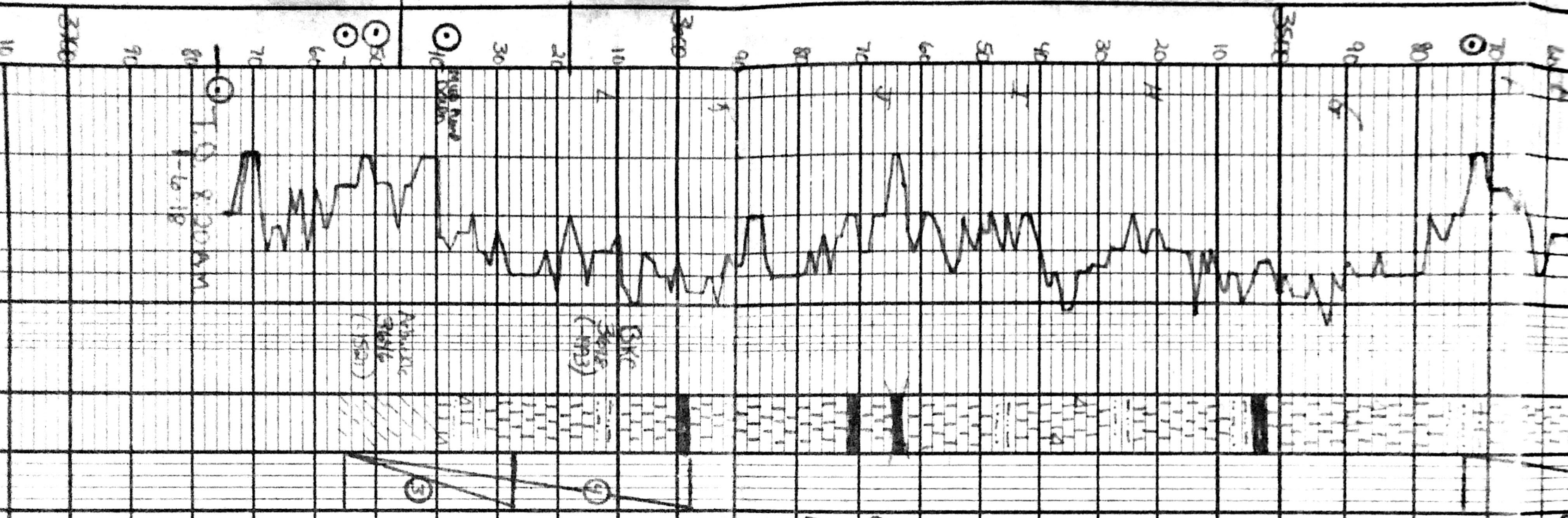
LS off white fossils - fossiliferous shale

LS off white fossils - fossiliferous shale

LS off white fossils - fossiliferous shale

LS off white fossils - fossiliferous shale

LS off white fossils - fossiliferous shale



DST #3
 3.27-3.55
 Abundant
 Rocker
 failure

DST #4
 3.57-3.58
 Abundant
 5.00-5.00

Rec
 30' in 3' CO
 10' in 1/2" in 1/2"

10
 20
 30
 40
 50
 60
 70
 80
 90
 100