

# GEOLOGIC REPORT

**DANIEL T. JOHNSON**

**CONSULTING GEOLOGIST**

**19749 121<sup>ST</sup> RD, WINFIELD, KANSAS 67156**

**620-229-3258**

**Scale 1:240 (5"=100') Imperial  
Measured Depth Log**

**Well Name: Wolfe #4**

**Location: 2310' FNL & 650' FWL S/2 SW NW S29-T34S-R2E**

**License Number: 32705**

**Region: Midcon**

**Spud Date: 4/13/18**

**Drilling Completed: 4/19/18**

**Surface Coordinates:**

**Bottom Hole**

**Coordinates:**

**Ground Elevation (ft): 1198'**

**K.B. Elevation (ft): 1206'**

**Logged Interval (ft): 2700'**

**To: 3892'**

**Total Depth (ft): 3892'**

**Formation: Arbuckle**

**Type of Drilling Fluid: Chemical**

Printed by WellSight Log Viewer from WellSight Systems 1-800-447-1534 [www.WellSight.com](http://www.WellSight.com)

## OPERATOR

**Company: Raney Oil Company, LLC**

**Address: 4556 Bauer Brook Ct  
Lawrence, Kansas**

## GEOLOGIST

**Name: Daniel T. Johnson**

**Company: Consulting Geologist**

**Address: 19749 121st Rd  
Winfield, Kansas 67156  
620-229-3258**

## Progress:

**4/13: Move in,Rig up,Drilled 265', set 265' 8 5/8" surface casing**

**4/14: 265' WOC**

**4/15:1391' Drilling ahead**

**4/16:2310' Drilling**

**4/17:3056' Drilling**

**4/18:3515' Drilling**

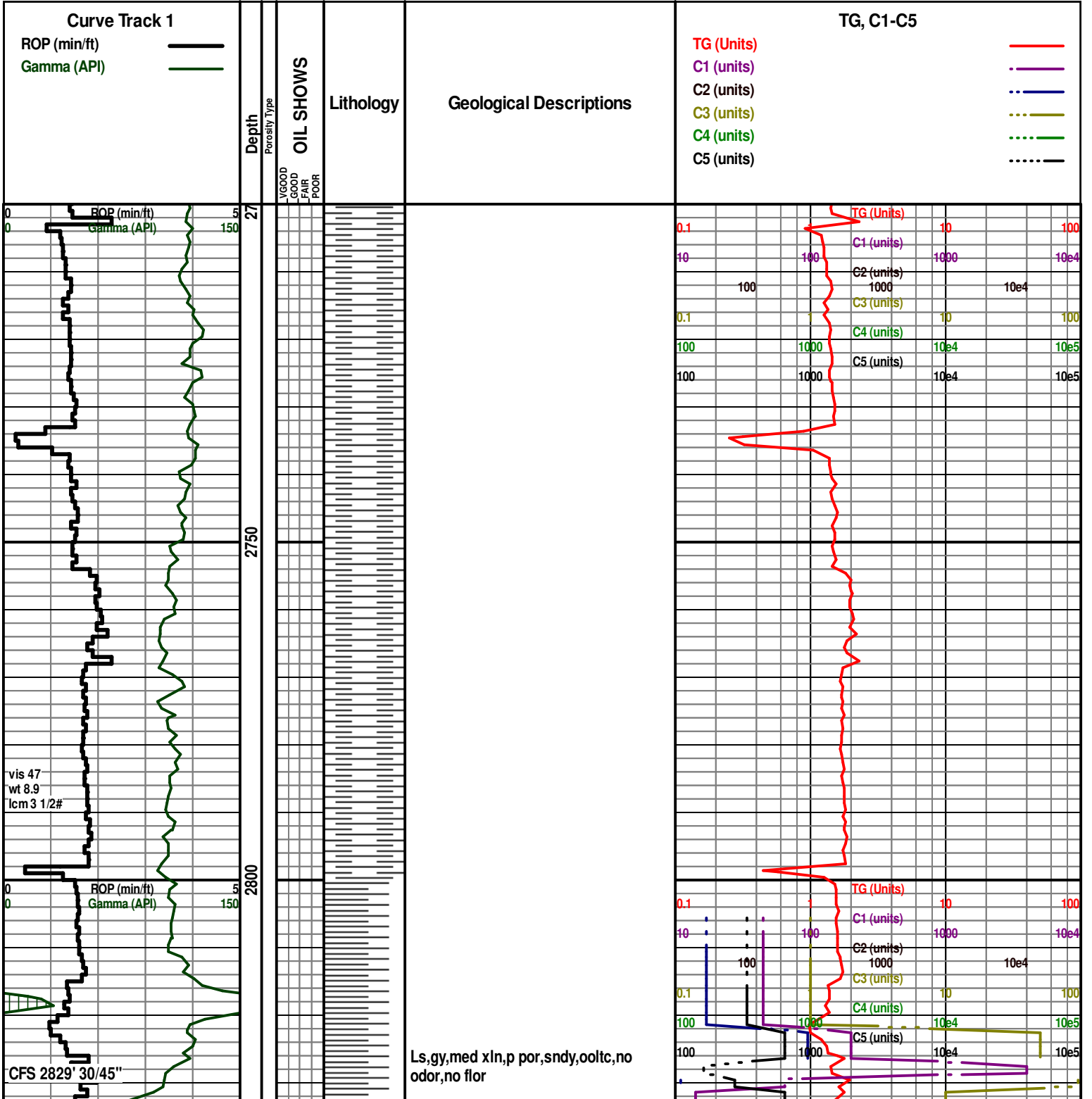
**4/19:3892'RTD,ran elogs,set 5 1/2" 17# @ 3854'**

# Bit Record:

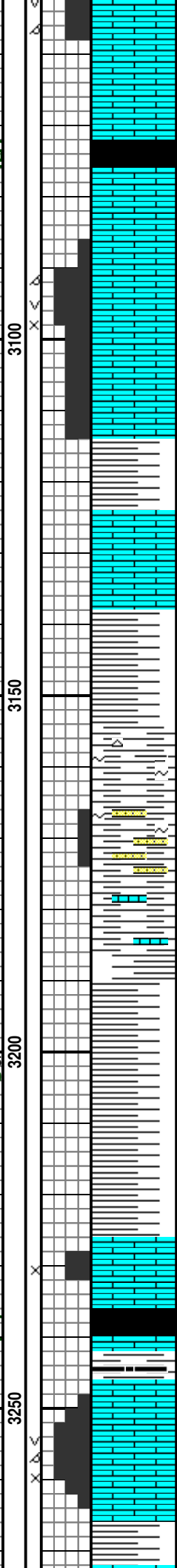
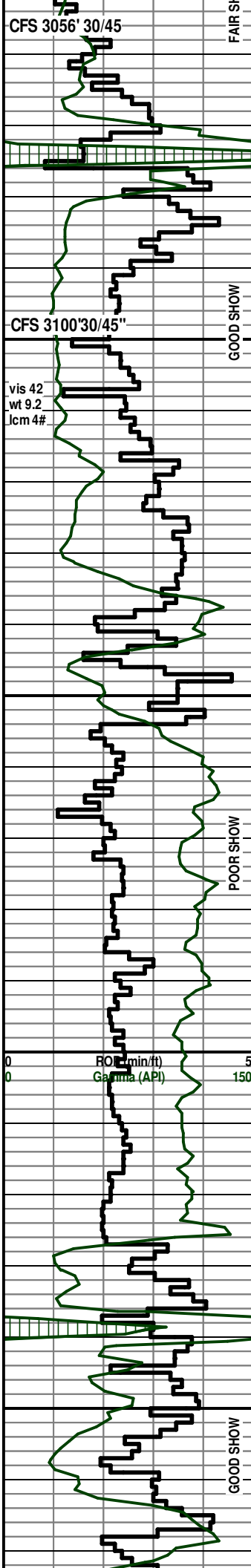
#1 0-265 12 1/4" PDC  
 #2 265- 3785' 7 7/8" J2 1721788  
 #3 3785'-3892' 7 7/8" J2 F16868

# Deviation Surveys:

265' 0\*  
 734' 1/4\*  
 1267' 1/2\*  
 1734' 1/2\*  
 2423' 3/4\*  
 3100' 1/2\*  
 3785' 1\*







por, bri sptd flor 30%, FSFO, GD ODOR

Sh, blk, fiss

Ls, gy-lt brn, med-crs xln, gd intxn por, tr moldic and vuglr por, sec calc filled frags, gd odor, bri edge flor 40% abnd bri specks of oil in tray, fr-gd SFO, Gd cut

Ls, aa, decr in xln size, flor, show

Sh, dk gy

Ls, wht-lt gy, f xln, p intxn por, ns

**Base Kansas City 3138(-1944)**

Sh, vcol

**Cleveland Ss 3154(-1960)**

Ss, in pt, lt grn gy, vf grn, shly, tite, cht, glauc, abundt f-med grns loose in tray, fluor specks in tray

Ls, lt brn, med xln, dolc in pt, fr intxn por, sctrd fluor

Sh gy-dk gy

**Marmaton 3227(-2033)**

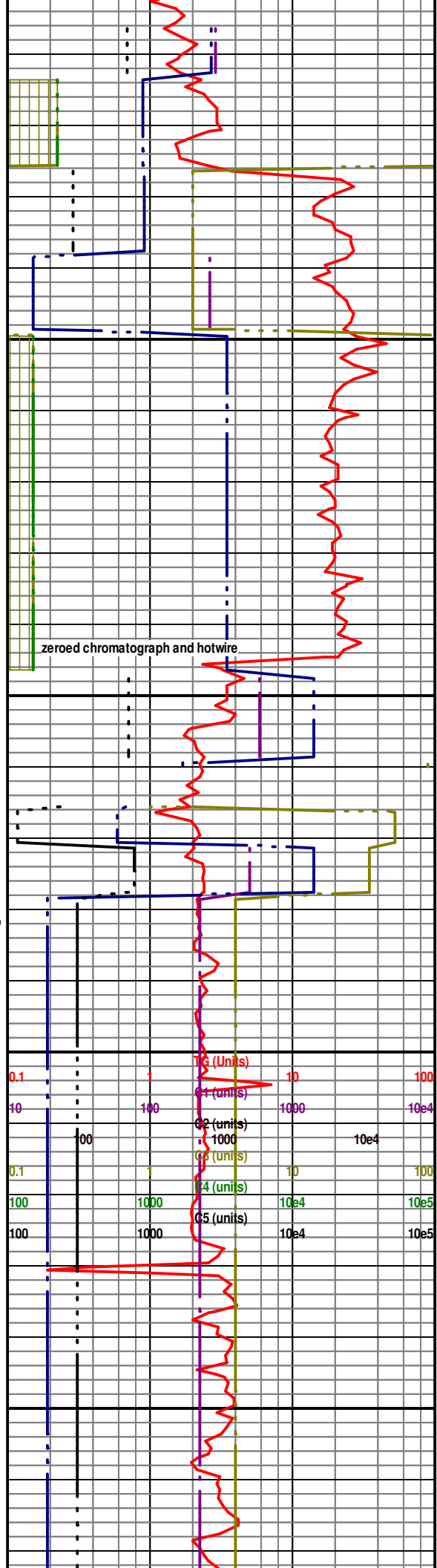
Altamont

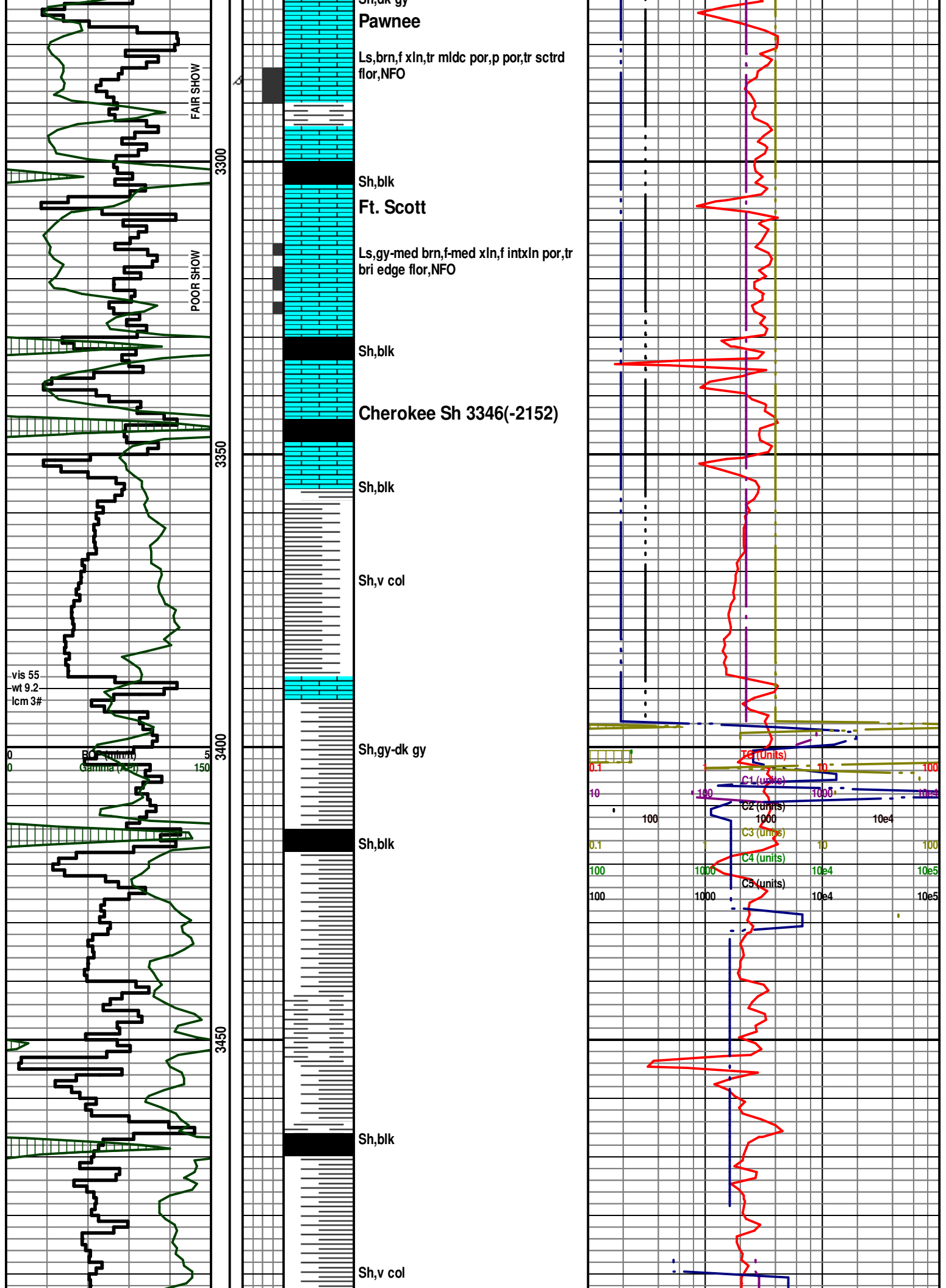
Sh, blk

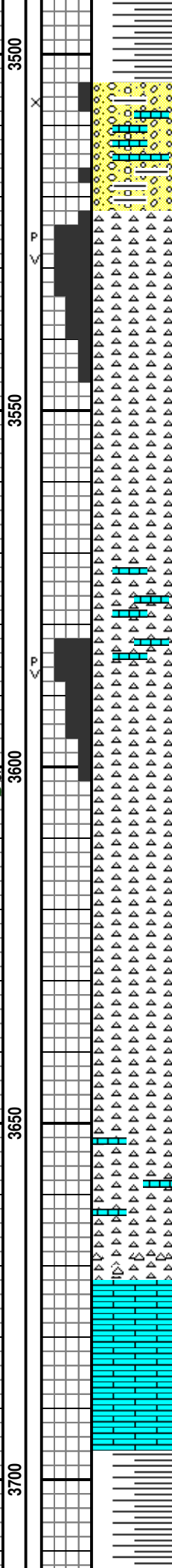
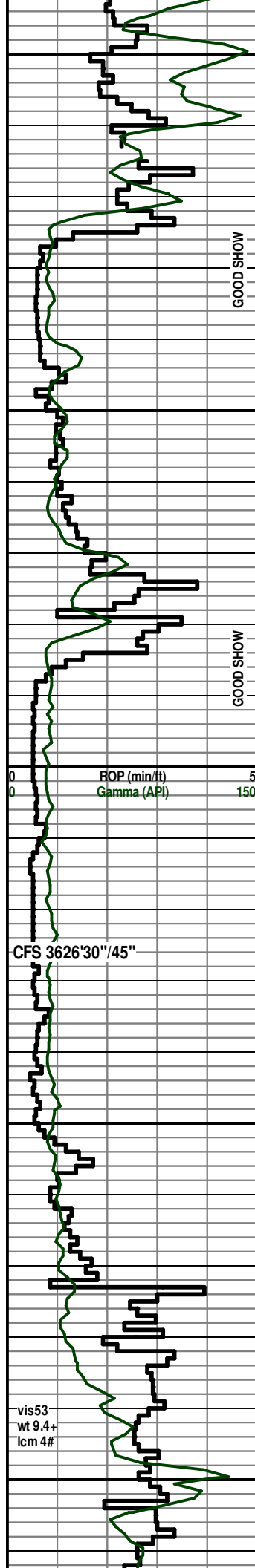
Oswego

Ls, brn, med-cr xln, clr sec calc, foss frag framework, gd intxn por, some mlcdand vuglr por, gd odor, bri even flor 40% smpl, SFO, slow cloudlike cut

Sh dk gy







Congl, Ss, lt gy, f grn, clstr wSO, Sh, v col, Ls, lt brn, f xln, NS

**Mississippi "Chert" 3522(-2316)**

Cht, wht-lt tan, 90% wthrd, g ppt por, g wthrd por, 10% fresh sharp, gd odor, G show oil bldg from rock face, v bri flor 90% smpl, gd strmg cut

Cht, wht-lt tan, gd ppt wthrd por, gd odor, bri flor 25% smple, SFO

Cht, wht, mstly fresh, sharp, Ls, lt brn, f xln, p por, NS

**Lower Chert 3553(-2347)**

Cht, wht-lt brn stn, 70% wthrd and ppt por, gd odor, SFO, bri flor on wthrd portion, slow cloudy cut

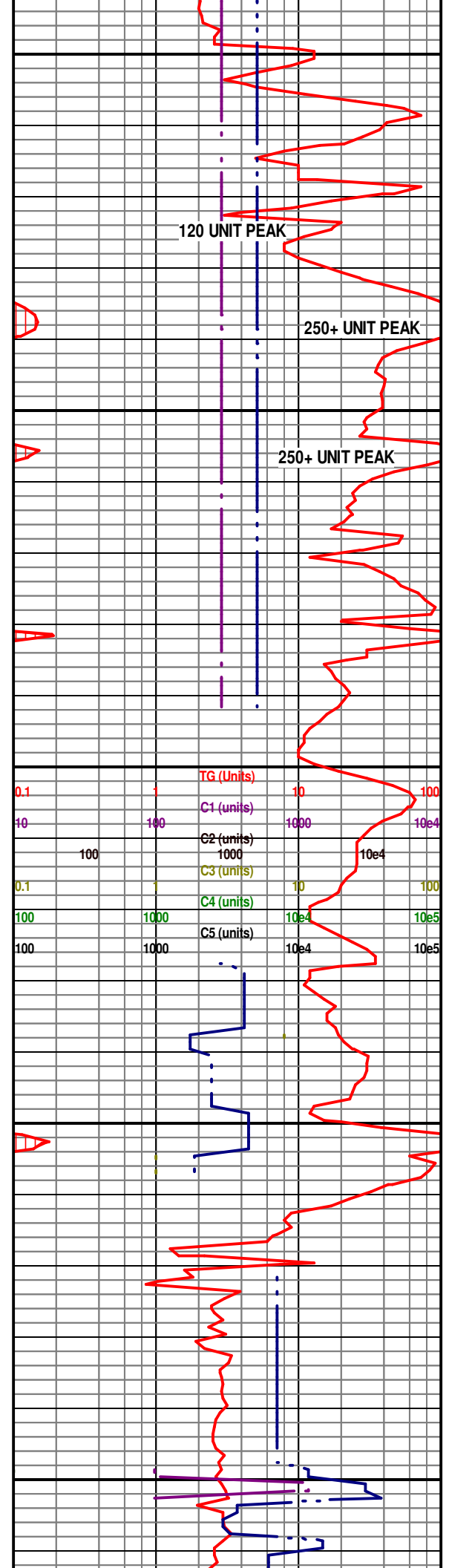
Cht, aa, decr in odor, decr SO

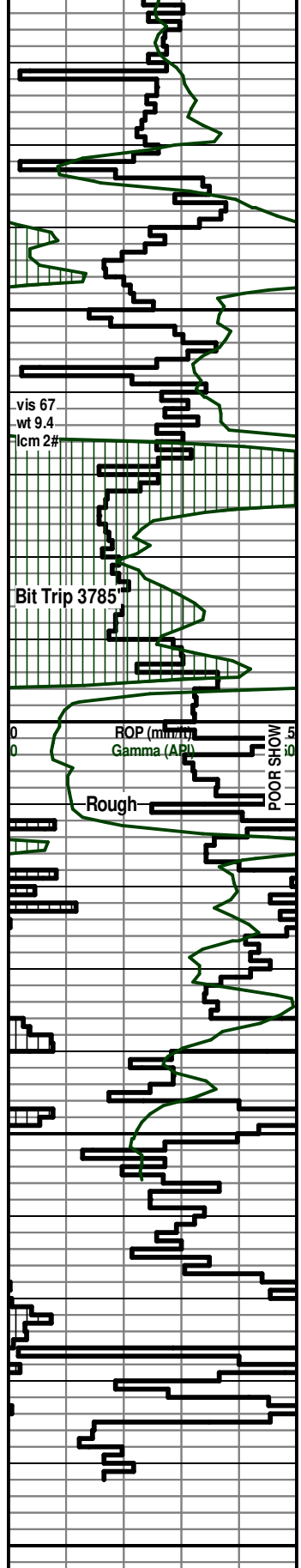
Cht, wht, fresh, sharp, NS

**Kinderhouk 3672(-2466)**

Ls, gy-dk gy, f xln, dns

Sh, gy-bl gy, dolc





3750  
3600  
3650  
3900

Dol,dk gy,med xln,p por,dns

**Chattanooga Sh**  
3736(-2530)

Sh,dk gy-blk

**Simpson Group 3796**  
(-2590)  
Ss,clr-wht,lt stn in pt,f-med grn,rnd,mod srt'd,tr f-gd por,mst tite si cmt,tr glauc,fr odor,bri flor on a few pcs,SSFO

Qtz,clr,lg xln

Sh,gy-dk brn  
Glauc,

Ss,lt gy,vf grn,shly,ns

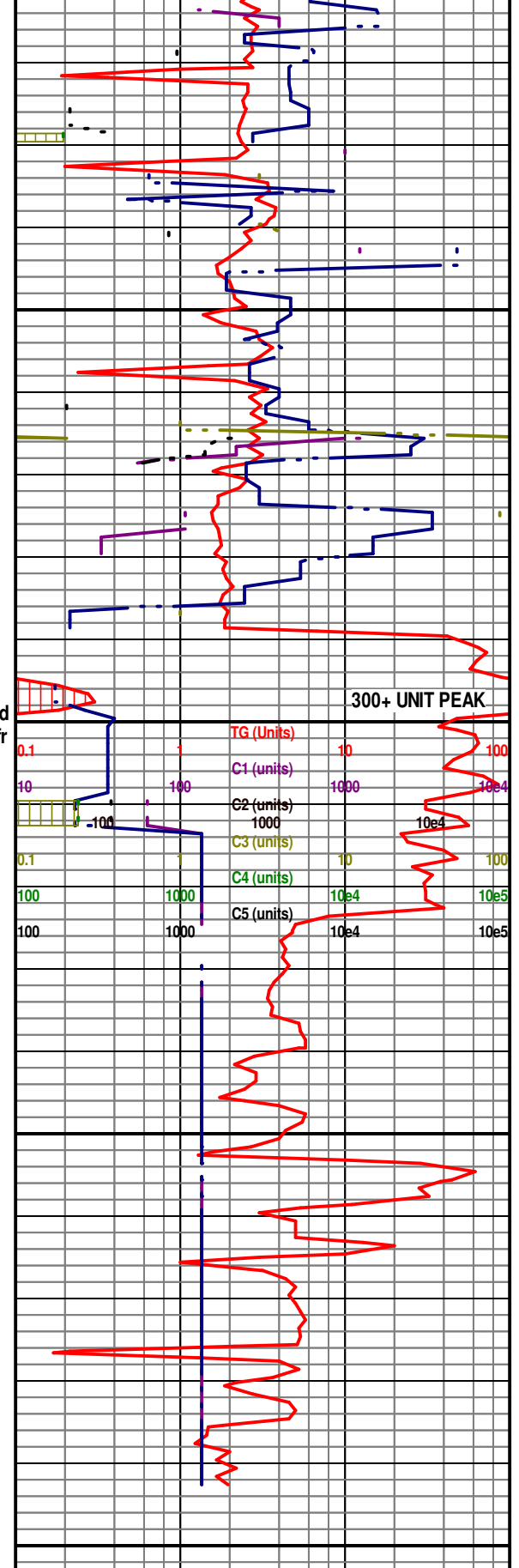
Sh,grn-lt grn gy

Ss,wht,f grn,mst tite,tr stn,no odor,no florNS

Ss,clr,med grn,abnd carb mat,glauc,g por,ns

**Arbuckle 3888(-2682)**  
Dol,brn,med-crs xln,g por,ns

**Rotary Total Depth**  
3892(-2686)



50

2310' FNL & 650' FWL  
Approx S/2 SW NW  
29-T34S-R2E  
Sumner County, Kansas  
KB1206'