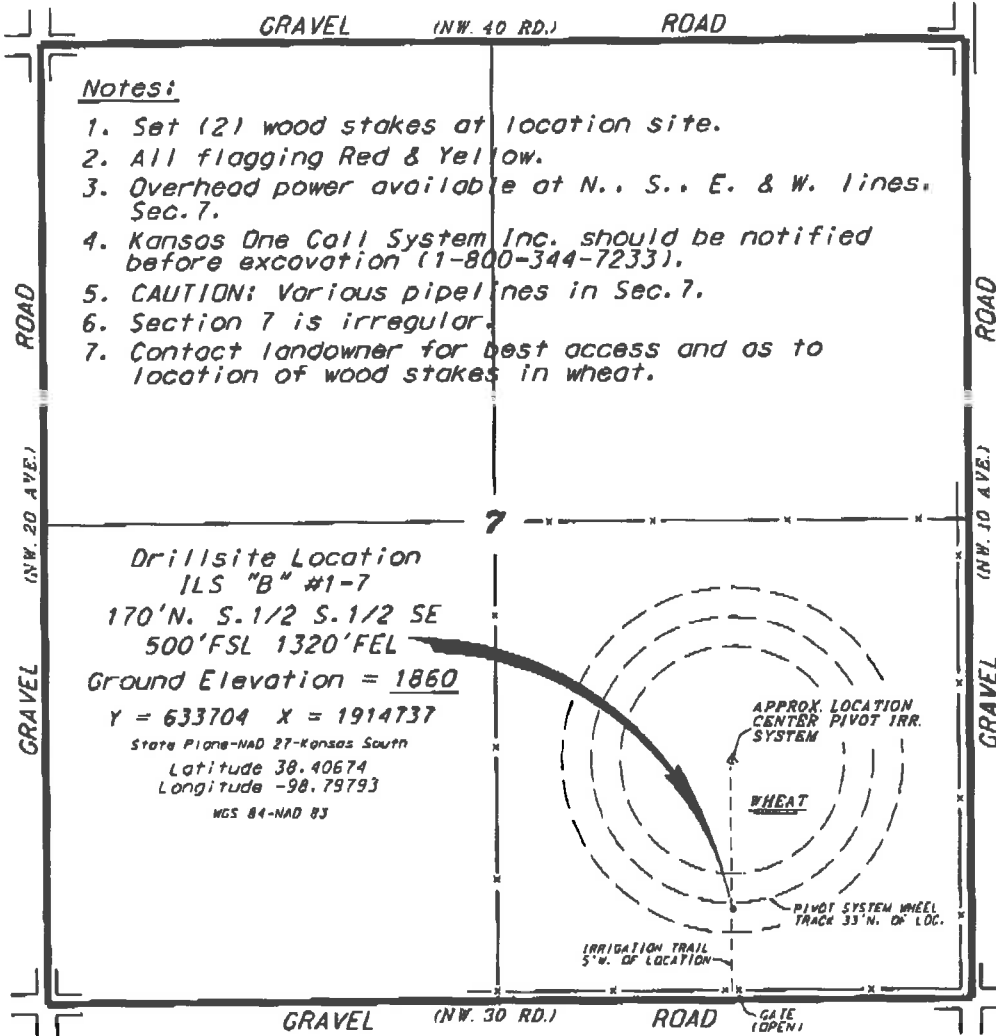
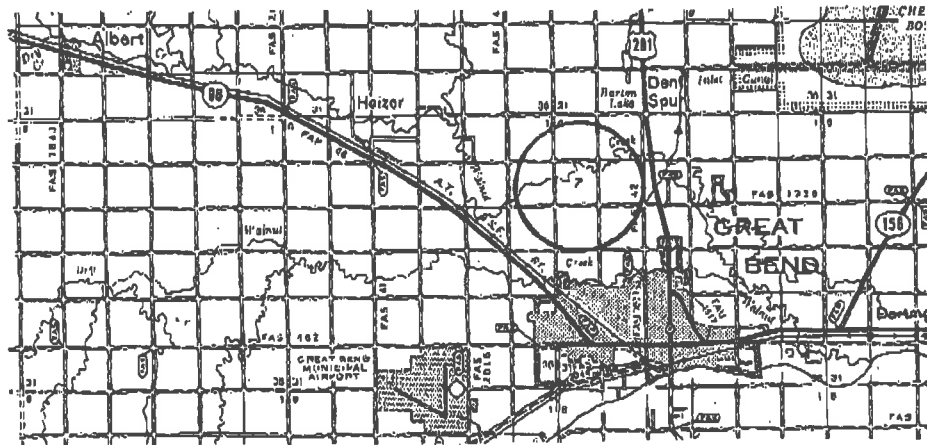
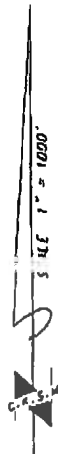


F.G. HOLL COMPANY, LLC
 ILS LEASE
 SE. 1/4, SECTION 7, T19S, R13W
 BARTON COUNTY, KANSAS



*Ingress and egress to location as shown on this plan is per usage only and may not be legally opened for public use. Contact landowner, tenant and county road department for access.



• Controlling area is based upon the best maps and photographs available to us and upon a regular section of 1/4 containing 640 acres.
 • Approximate section lines were determined using the normal standard of care of old-time surveyors practicing in the State of Kansas. The section corners, when established on the precise section lines, were not necessarily located, and the exact location of the drillsite location in the section is not guaranteed. Therefore, the operator, securing this service and accepting this plan and all other parties relying thereon agree to hold Central Kansas Oilfield Services, Inc., its officers and employees harmless from all losses, costs and expenses and said entities released from any liability from incidental or consequential damages.
 • Elevations derived from National Geodetic Vertical Datum.

Date September 12, 2018