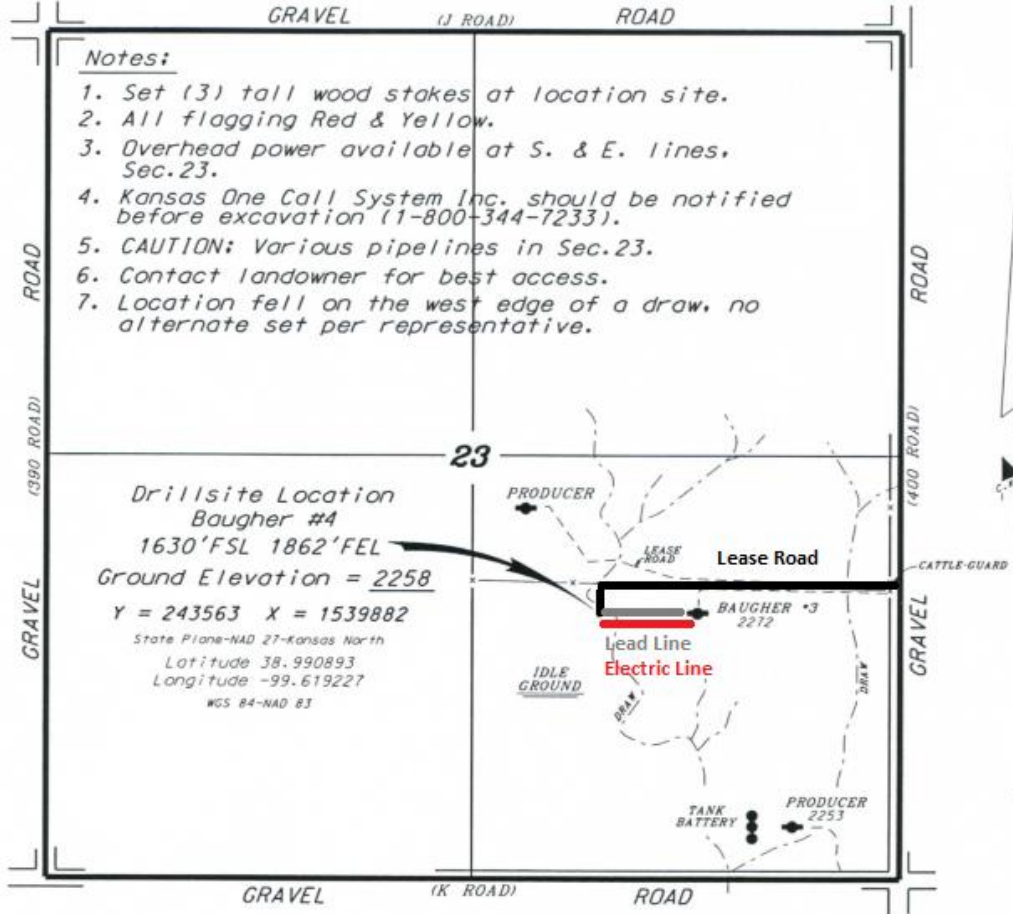


AMERICAN OIL, LLC
 BAUGHER LEASE
 SE.1/4, SECTION 23, T12S, R21W
 TREGO COUNTY, KANSAS



*Ingress and egress to location as shown on this plat is for usage only and may not be legally opened for public use. Contact landowner, tenant and county road department for access.



*Controlling data is based upon the best maps and photographs available to us and upon a regular section of land containing 640 acres.