

# ADVANTAGE ELEVATIONS

OIL FIELD SURVEYORS

BOX 8604 - PRATT, KS 67124  
(620) 672-6491

831131

INVOICE NO.

FLETCHER OPERATING LLC  
OPERATOR

12-6  
NO.

AMOS  
FARM

MORRIS CO., KS  
COUNTY

6 16s 9e  
S T R

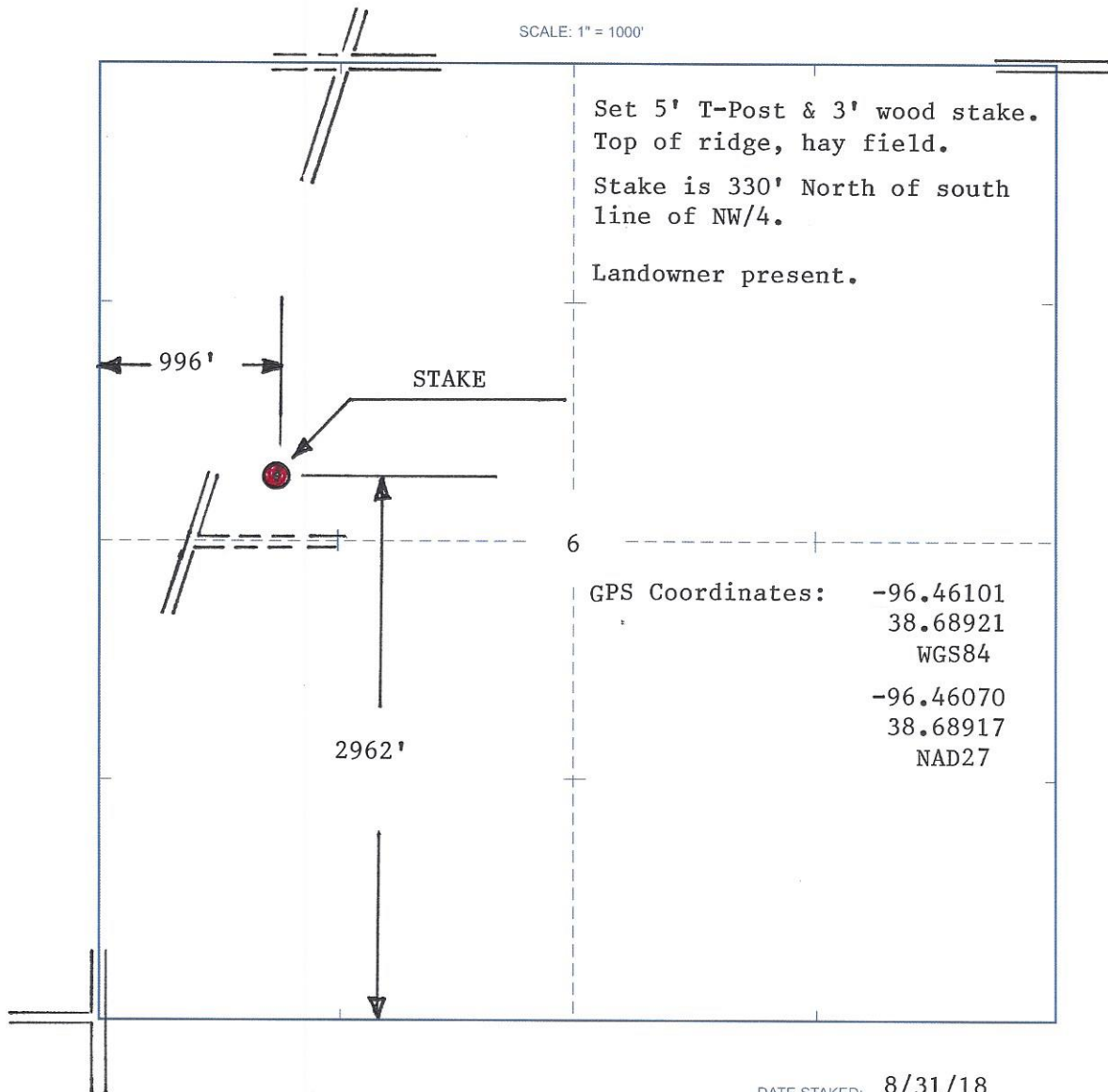
C SE SW NW (2962' FSL & 996' FWL of Sec)  
LOCATION

ELEVATION: 1344' GR

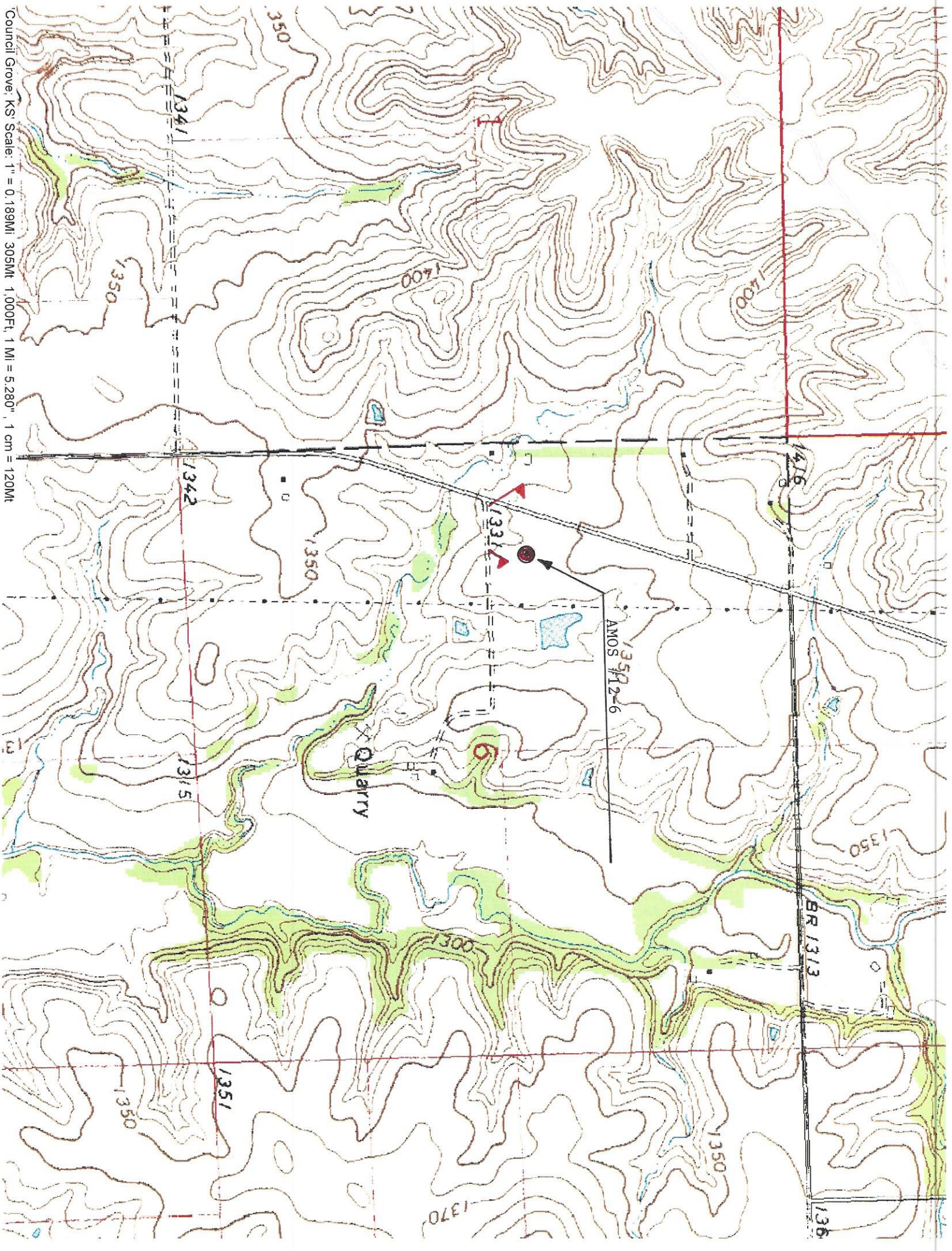


FLETCHER OPERATING LLC  
PO BOX 2147  
FAIRHOPE, AL 36533

AUTHORIZED BY: John W. Newman



Council Grove, KS Scale: 1" = 0.189MI 305MT 1,000Ft, 1 MI = 5,280', 1 cm = 120MT




# FLETCHER OPERATING LLC

AMOS #12-6  
C SE SW NW  
SEC 6-16S-9E  
MORRIS CO., KS

38.68921 -96.46101

**Legend**

 38.68921 -96.46101

S-575-Rd

Q Ave

Old Hwy 4

3000 ft




Google Earth

© 2018 Google

# BIG JOHN CREEK WELL LOCATIONS

Write a description for your map.

## Legend

-  1320 LINE E W S BNDRY NW 6 16S 9E MORRIS CO KS
-  Feature 1
-  Feature 2
-  KS
-  MORRIS CO KS

SE SW NW



SW SE NW

