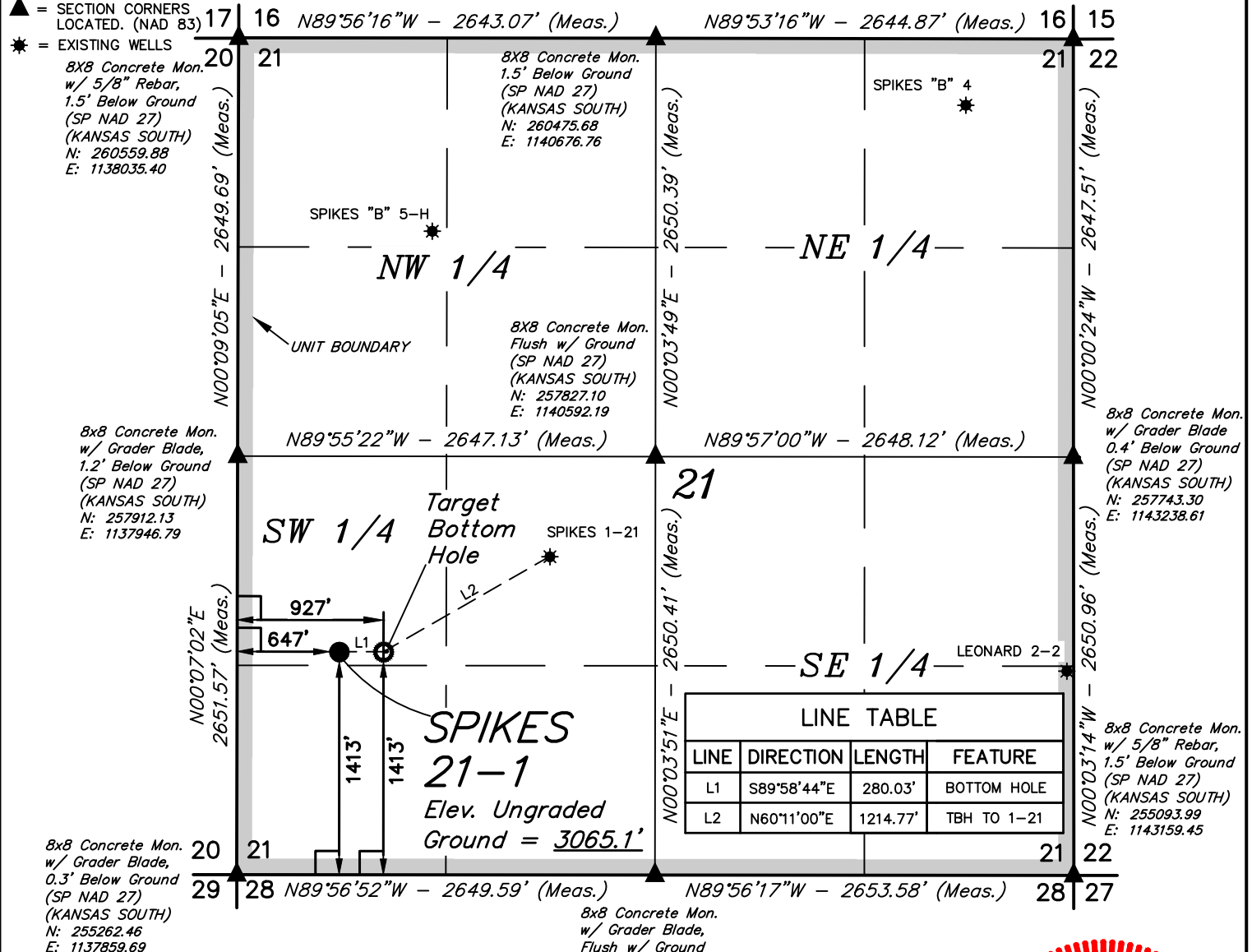


LEGEND:

- ☐ = 90° SYMBOL
- = PROPOSED WELLHEAD.
- = TARGET BOTTOM HOLE.
- ▲ = SECTION CORNERS LOCATED. (NAD 83)
- * = EXISTING WELLS

T31S, R38W, 6th P.M.

8x8 Concrete Mon.
w/ 5/8" Rebar,
0.8' Below Ground
(SP NAD 27)
(KANSAS SOUTH)
N: 260389.11
E: 1143319.84



CERTIFICATE

THIS IS TO CERTIFY THAT THE ABOVE PLAT WAS PREPARED FROM FIELD NOTES OF ACTUAL SURVEYS MADE BY ME OR UNDER MY SUPERVISION AND THAT THE SAME ARE TRUE AND CORRECT TO THE BEST OF MY KNOWLEDGE AND BELIEF.



NAD 83 (SURFACE LOCATION)	NAD 83 (TARGET BOTTOM HOLE)
LATITUDE = 37°20'02.25" (37.333958)	LATITUDE = 37°20'02.25" (37.333959)
LONGITUDE = 101°27'49.48" (101.463743)	LONGITUDE = 101°27'46.01" (101.462780)
NAD 27 (SURFACE LOCATION)	NAD 27 (TARGET BOTTOM HOLE)
LATITUDE = 37°20'02.17" (37.333935)	LATITUDE = 37°20'02.17" (37.333936)
LONGITUDE = 101°27'47.90" (101.463305)	LONGITUDE = 101°27'44.43" (101.462342)
STATE PLANE NAD 83 (KANSAS SOUTH)	STATE PLANE NAD 83 (KANSAS SOUTH)
N: 1569004.92 E: 450779.96	N: 1568996.20 E: 451059.81
STATE PLANE NAD 27 (KANSAS SOUTH)	STATE PLANE NAD 27 (KANSAS SOUTH)
N: 256653.77 E: 1138552.68	N: 256645.05 E: 1138832.54



BASIS OF BEARINGS
BASIS OF BEARINGS IS A G.P.S. OBSERVATION

BASIS OF ELEVATION
ELEVATION 2943.84' WAS DERIVED FROM AN OPUS SOLUTION AT LAT: 37°33'17.64" LONG: 100°53'21.35" AND HAS A DATUM OF NAVD88.



MERIT ENERGY COMPANY

SPIKES 21-1
1413' FSL 647' FWL
NW 1/4 SW 1/4, SECTION 21, T31S, R38W, 6th P.M.
STEVENS COUNTY, KANSAS

SURVEYED BY	B.L.	09-26-18	SCALE
DRAWN BY	D.J.S.	09-28-18	1" = 1000'

WELL LOCATION PLAT



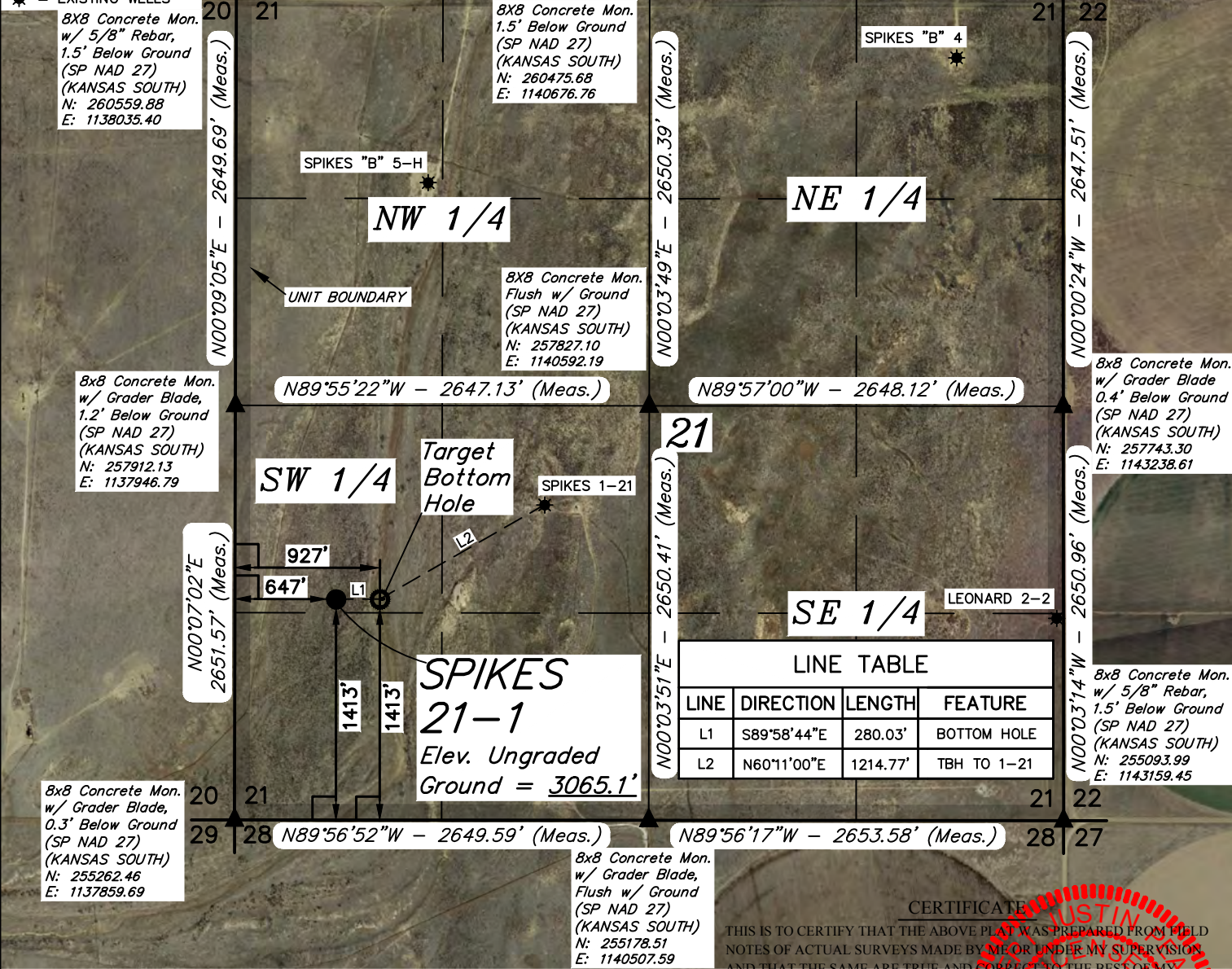
UELS, LLC
Corporate Office * 85 South 200 East
Vernal, UT 84078 * (435) 789-1017

T31S, R38W, 6th P.M.

LEGEND:

- = 90° SYMBOL
- = PROPOSED WELLHEAD.
- = TARGET BOTTOM HOLE.
- ▲ = SECTION CORNERS LOCATED. (NAD 83)
- * = EXISTING WELLS

8x8 Concrete Mon.
w/ 5/8" Rebar,
0.8' Below Ground
(SP NAD 27)
(KANSAS SOUTH)
N: 260389.11
E: 1143319.84



CERTIFICATE OF SURVEY
THIS IS TO CERTIFY THAT THE ABOVE PLAT WAS PREPARED FROM FIELD NOTES OF ACTUAL SURVEYS MADE BY ME OR UNDER MY SUPERVISION AND THAT THE SAME ARE TRUE AND CORRECT TO THE BEST OF MY KNOWLEDGE AND BELIEF.



NAD 83 (SURFACE LOCATION)	NAD 83 (TARGET BOTTOM HOLE)
LATITUDE = 37°54'04.08" (37.901133)	LATITUDE = 37°53'56.73" (37.899091)
LONGITUDE = 100°55'43.51" (100.928753)	LONGITUDE = 100°55'33.25" (100.925902)
NAD 27 (SURFACE LOCATION)	NAD 27 (TARGET BOTTOM HOLE)
LATITUDE = 37°54'03.99" (37.901109)	LATITUDE = 37°53'56.64" (37.899068)
LONGITUDE = 100°55'41.92" (100.928310)	LONGITUDE = 100°55'31.66" (100.925460)
STATE PLANE NAD 83 (KANSAS SOUTH)	STATE PLANE NAD 83 (KANSAS SOUTH)
N: 1770957.02 E: 611640.62	N: 1770192.55 E: 612443.41
STATE PLANE NAD 27 (KANSAS SOUTH)	STATE PLANE NAD 27 (KANSAS SOUTH)
N: 458601.67 E: 1299417.22	N: 457837.22 E: 1300220.02



BASIS OF BEARINGS
BASIS OF BEARINGS IS A G.P.S. OBSERVATION

BASIS OF ELEVATION
ELEVATION 2943.84' WAS DERIVED FROM AN OPUS SOLUTION AT
LAT: 37°33'17.64" LONG: 100°53'21.35" AND HAS A DATUM OF NAVD88.



MERIT ENERGY COMPANY

SPIKES 21-1
1413' FSL 647' FWL
NW 1/4 SW 1/4, SECTION 21, T31S, R38W, 6th P.M.
STEVENS COUNTY, KANSAS

SURVEYED BY	B.L.	09-26-18	SCALE
DRAWN BY	D.J.S.	09-28-18	1" = 1000'

WELL LOCATION PLAT



UELS, LLC
Corporate Office * 85 South 200 East
Vernal, UT 84078 * (435) 789-1017

BEGINNING AT THE INTERSECTION OF KS-25 S/S COLORADO ST AND E OKLAHOMA AVE IN ULYSSES, KANSAS PROCEED IN A SOUTHERLY DIRECTION ALONG KS-25 S/S COLORADO ST APPROXIMATELY 18.7 MILES TO THE JUNCTION OF THIS ROAD AND ROAD Y TO THE WEST; TURN RIGHT AND PROCEED IN A WESTERLY, THEN NORTHWESTERLY DIRECTION APPROXIMATELY 6.0 MILES TO THE JUNCTION OF THIS ROAD AND ROAD 7 TO THE NORTH; PROCEED IN A NORTHERLY DIRECTION APPROXIMATELY 0.3 MILES TO THE JUNCTION OF THIS ROAD AND ROAD Z TO THE NORTHWEST; PROCEED IN A NORTHWESTERLY THEN WESTERLY DIRECTION APPROXIMATELY 0.9 MILES. FROM THIS POINT, THE PROPOSED WELL LOCATION IS APPROXIMATELY 4,066' NORTHERLY.

TOTAL DISTANCE FROM ULYSSES, KANSAS TO THE PROPOSED WELL LOCATION IS APPROXIMATELY 25.9 MILES.

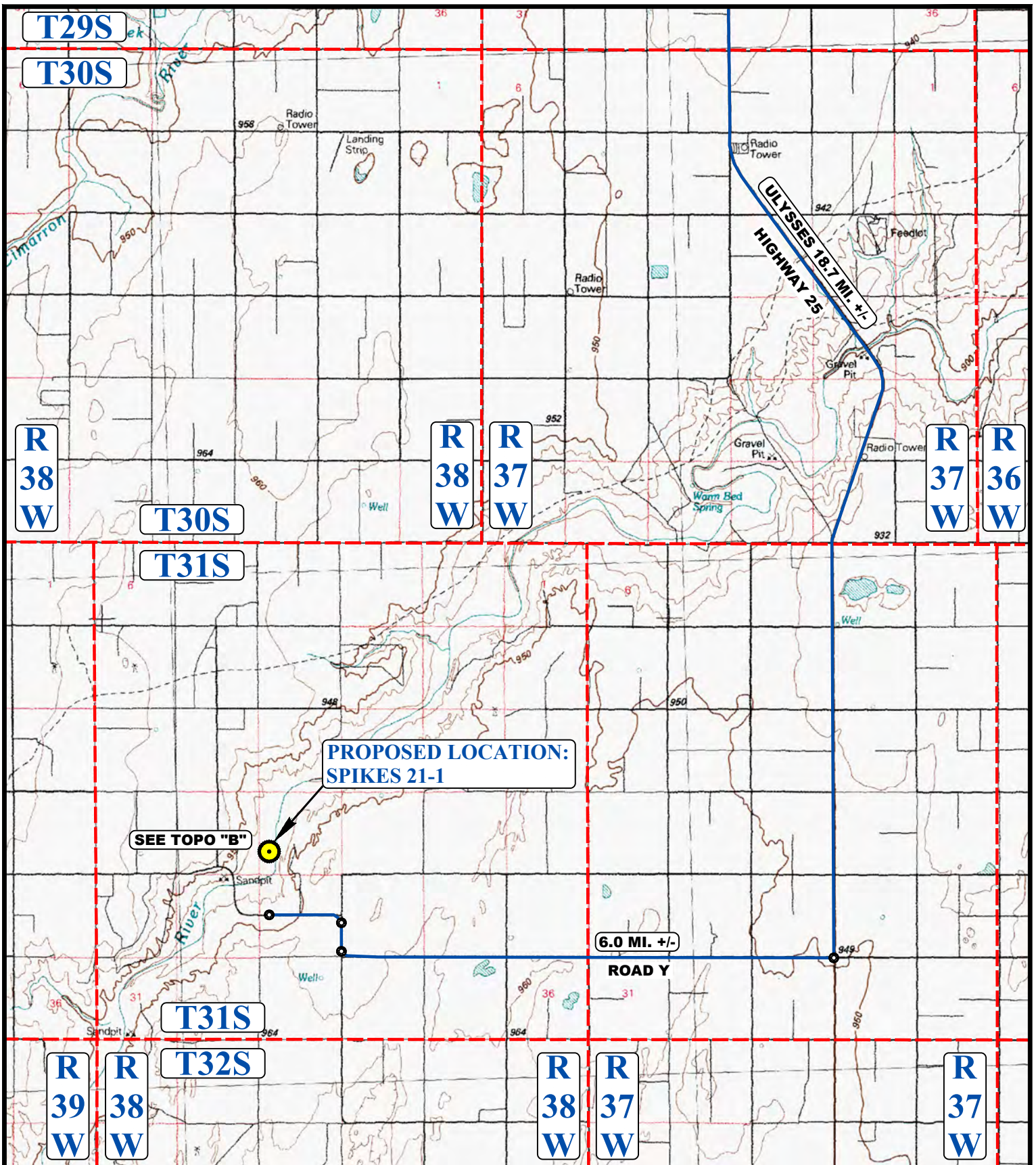
MERIT ENERGY COMPANY

**SPIKES 21-1
1413' FSL 647' FWL
NW 1/4 SW 1/4, SECTION 21, T31S, R38W, 6th P.M.
STEVENS COUNTY, KANSAS**

SURVEYED BY	B.L.	09-26-18	
DRAWN BY	D.J.S.	09-28-18	
ROAD DESCRIPTION			



UELS, LLC
Corporate Office * 85 South 200 East
Vernal, UT 84078 * (435) 789-1017



LEGEND:

 PROPOSED LOCATION



MERIT ENERGY COMPANY

SPIKES 21-1
 1413' FSL 647' FWL
 NW 1/4 SW 1/4, SECTION 21, T31S, R38W, 6th P.M.
 STEVENS COUNTY, KANSAS



UELS, LLC
 Corporate Office * 85 South 200 East
 Vernal, UT 84078 * (435) 789-1017

SURVEYED BY	B.L.	09-26-18	SCALE
DRAWN BY	D.J.S.	09-28-18	1 : 100,000
ACCESS ROAD MAP			TOPO A

R
38
W

STEVEN & CAROL
TARBET

PROPOSED LOCATION:
SPIKES 21-1

22
T31S R38W

23

0.9 MI. +/-

ROAD Z

0.3 MI. +/-

ROAD 7

ULYSSES 24.7 MI. +/-

ROAD Y

33

34

35

T31S

NOTE: PARCEL DATA SHOWN HAS BEEN OBTAINED FROM VARIOUS SOURCES AND SHOULD BE USED FOR MAPPING, GRAPHIC AND PLANNING PURPOSES ONLY. NO WARRANTY IS MADE BY UINTAH ENGINEERING AND LAND SURVEYING (UELS) FOR ACCURACY OF THE PARCEL DATA.

LEGEND:

— EXISTING ROAD



MERIT ENERGY COMPANY

SPIKES 21-1
1413' FSL 647' FWL
NW 1/4 SW 1/4, SECTION 21, T31S, R38W, 6th P.M.
STEVENS COUNTY, KANSAS

SURVEYED BY	B.L.	09-26-18	SCALE
DRAWN BY	D.J.S.	09-28-18	1 : 24,000
ACCESS ROAD MAP			TOPO B



UELS, LLC
Corporate Office * 85 South 200 East
Vernal, UT 84078 * (435) 789-1017