

KANSAS CORPORATION COMMISSION  
OIL & GAS CONSERVATION DIVISION

Form must be Typed

Form must be signed

All blanks must be complete

## TEMPORARY ABANDONMENT WELL APPLICATION

OPERATOR: License# \_\_\_\_\_

Name: \_\_\_\_\_

Address 1: \_\_\_\_\_

Address 2: \_\_\_\_\_

City: \_\_\_\_\_ State: \_\_\_\_\_ Zip: \_\_\_\_\_ + \_\_\_\_\_

Contact Person: \_\_\_\_\_

Phone: ( \_\_\_\_\_ ) \_\_\_\_\_

Contact Person Email: \_\_\_\_\_

Field Contact Person: \_\_\_\_\_

Field Contact Person Phone: ( \_\_\_\_\_ ) \_\_\_\_\_

API No. 15- \_\_\_\_\_

Spot Description: \_\_\_\_\_

\_\_\_\_ - \_\_\_\_ - \_\_\_\_ - \_\_\_\_ Sec. \_\_\_\_\_ Twp. \_\_\_\_\_ S. R. \_\_\_\_\_ ☐ E ☐ W\_\_\_\_\_ feet from ☐ N / ☐ S Line of Section\_\_\_\_\_ feet from ☐ E / ☐ W Line of Section

GPS Location: Lat: \_\_\_\_\_, Long: \_\_\_\_\_

(e.g. xx.xxxxx) (e.g. -xxx.xxxxx)

Datum: ☐ NAD27 ☐ NAD83 ☐ WGS84County: \_\_\_\_\_ Elevation: \_\_\_\_\_ ☐ GL ☐ KB

Lease Name: \_\_\_\_\_ Well #: \_\_\_\_\_

Well Type: (check one) ☐ Oil ☐ Gas ☐ OG ☐ WSW ☐ Other: \_\_\_\_\_☐ SWD Permit #: \_\_\_\_\_ ☐ ENHR Permit #: \_\_\_\_\_☐ Gas Storage Permit #: \_\_\_\_\_

Spud Date: \_\_\_\_\_ Date Shut-In: \_\_\_\_\_

	Conductor	Surface	Production	Intermediate	Liner	Tubing
Size						
Setting Depth						
Amount of Cement						
Top of Cement						
Bottom of Cement						

Casing Fluid Level from Surface: \_\_\_\_\_ How Determined? \_\_\_\_\_ Date: \_\_\_\_\_

Casing Squeeze(s): \_\_\_\_\_ to \_\_\_\_\_ w / \_\_\_\_\_ sacks of cement, \_\_\_\_\_ to \_\_\_\_\_ w / \_\_\_\_\_ sacks of cement. Date: \_\_\_\_\_  
(top) (bottom) (top) (bottom)Do you have a valid Oil & Gas Lease? ☐ Yes ☐ NoDepth and Type: ☐ Junk in Hole at \_\_\_\_\_ ☐ Tools in Hole at \_\_\_\_\_ Casing Leaks: ☐ Yes ☐ No Depth of casing leak(s): \_\_\_\_\_  
(depth) (depth)Type Completion: ☐ ALT. I ☐ ALT. II Depth of: ☐ DV Tool: \_\_\_\_\_ w / \_\_\_\_\_ sacks of cement ☐ Port Collar: \_\_\_\_\_ w / \_\_\_\_\_ sack of cement  
(depth) (depth)

Packer Type: \_\_\_\_\_ Size: \_\_\_\_\_ Inch Set at: \_\_\_\_\_ Feet

Total Depth: \_\_\_\_\_ Plug Back Depth: \_\_\_\_\_ Plug Back Method: \_\_\_\_\_

**Geological Data:****Formation Name**

Formation Top Formation Base

**Completion Information**

1. \_\_\_\_\_ At: \_\_\_\_\_ to \_\_\_\_\_ Feet Perforation Interval \_\_\_\_\_ to \_\_\_\_\_ Feet or Open Hole Interval \_\_\_\_\_ to \_\_\_\_\_ Feet

2. \_\_\_\_\_ At: \_\_\_\_\_ to \_\_\_\_\_ Feet Perforation Interval \_\_\_\_\_ to \_\_\_\_\_ Feet or Open Hole Interval \_\_\_\_\_ to \_\_\_\_\_ Feet

UNDER PENALTY OF PERJURY I HEREBY ATTEST THAT THE INFORMATION CONTAINED HEREIN IS TRUE AND CORRECT TO THE BEST OF MY KNOWLEDGE

Submitted Electronically

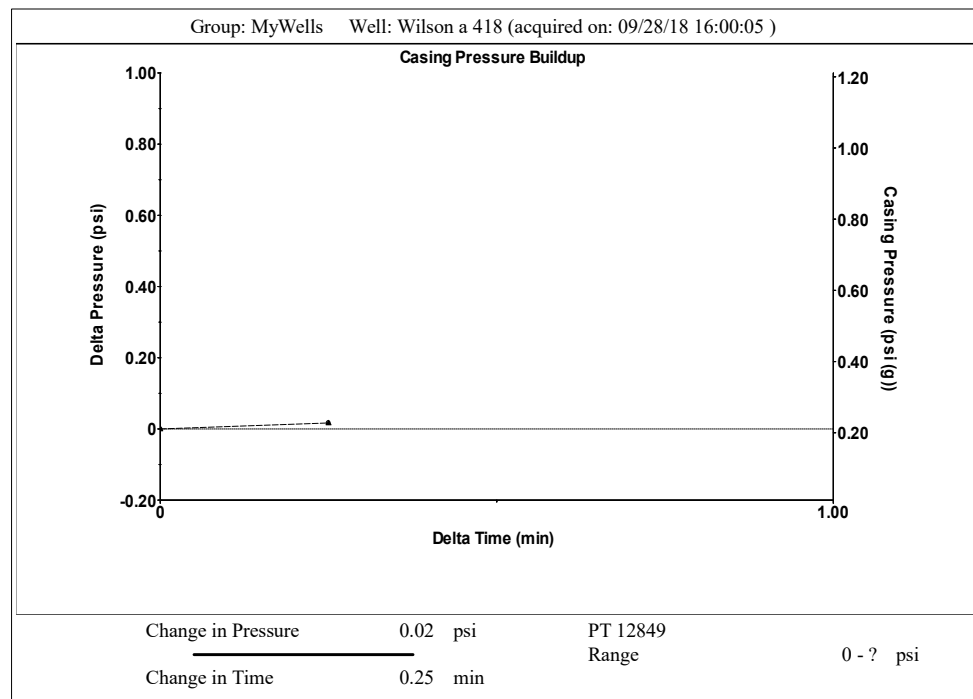
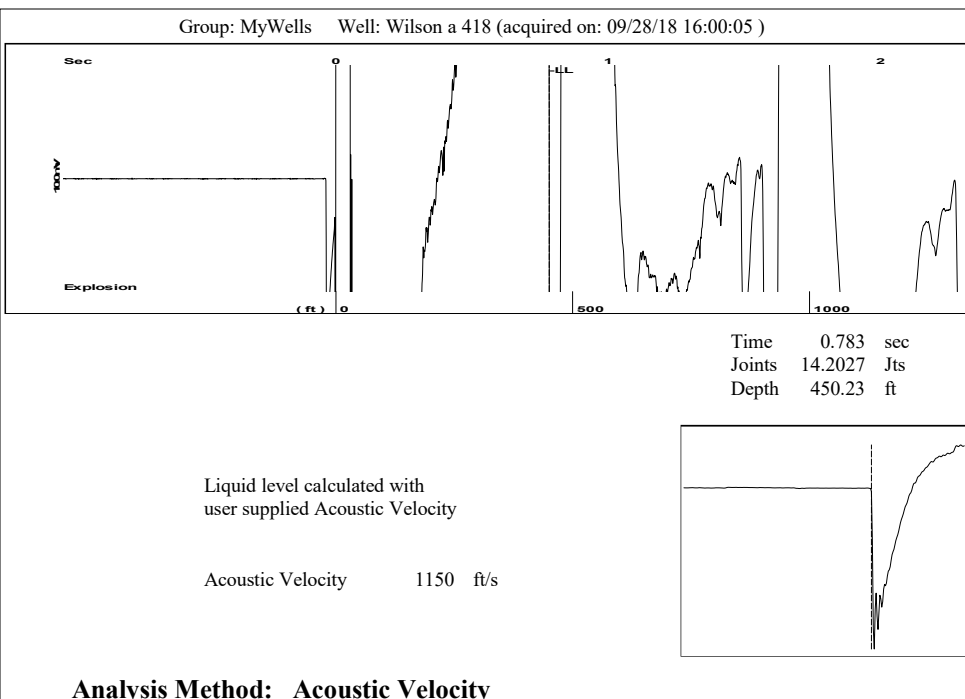
**Do NOT Write in This  
Space - KCC USE ONLY**

Date Tested: \_\_\_\_\_ Results: \_\_\_\_\_ Date Plugged: \_\_\_\_\_ Date Repaired: \_\_\_\_\_ Date Put Back in Service: \_\_\_\_\_

Review Completed by: \_\_\_\_\_ Comments: \_\_\_\_\_

TA Approved: ☐ Yes ☐ Denied Date: \_\_\_\_\_**Mail to the Appropriate KCC Conservation Office:**

	KCC District Office #1 - 210 E. Frontview, Suite A, Dodge City, KS 67801	Phone 620.682.7933
	KCC District Office #2 - 3450 N. Rock Road, Building 600, Suite 601, Wichita, KS 67226	Phone 316.337.7400
	KCC District Office #3 - 137 E. 21st St., Chanute, KS 66720	Phone 620.902.6450
	KCC District Office #4 - 2301 E. 13th Street, Hays, KS 67601-2651	Phone 785.261.6250



Group: MyWells Well: Wilson a 418 (acquired on: 09/28/18 16:00:05 )			
Production	Potential	Casing Pressure	Producing
Current	- * - BBL/D	0.2 psi (g)	
Oil 0	- * - BBL/D	Casing Pressure Buildup	
Water 0	- * - Mscf/D	0.017 psi	Annular
Gas - * -		0.25 min	Gas Flow
		Gas/Liquid Interface Pressure	- * - Mscf/D
IPR Method	Vogel	0.4 psi (g)	% Liquid
PBHP/SBHP	- * -		100 %
Production Efficiency	0.0		
Oil 25 deg.API		Liquid Level Depth	
Water 1.05 Sp.Gr.H2O		450.23 ft	
Gas 0.85 Sp.Gr.AIR		Tubing Intake Depth	
		- * - ft	
Acoustic Velocity 1150 ft/s		Formation Depth	
		688.00 ft	
Formation Submergence			Tubing Intake
Total Gaseous Liquid Column HT (TVD)		238 ft	- * - psi (g)
Equivalent Gas Free Liquid HT (TVD)		238 ft	Producing BHP
			108.5 psi (g)
Acoustic Test			Static BHP
			- * - psi (g)

Group: MyWells Well: Wilson a 418 (acquired on: 09/28/18 16:00:05 )

**Entered Acoustic Velocity for Liquid Level depth determination**

# STATE OF KANSAS

CORPORATION COMMISSION  
CONSERVATION DIVISION  
DISTRICT OFFICE No. 2  
3450 N. ROCK ROAD  
BUILDING 600, SUITE 601  
WICHITA, KS 67226



PHONE: 316-337-7400  
FAX: 316-630-4005  
<http://kcc.ks.gov/>

GOVERNOR JEFF COLYER, M.D.

SHARI FEIST ALBRECHT, CHAIR | JAY SCOTT EMLER, COMMISSIONER | DWIGHT D. KEEN, COMMISSIONER

October 08, 2018

Casey Coats  
Vess Oil Corporation  
1700 WATERFRONT PKWY BLDG 500  
WICHITA, KS 67206-6619

Re: Temporary Abandonment  
API 15-015-23324-00-02  
WILSON A OWWO 418  
SW/4 Sec.09-25S-05E  
Butler County, Kansas

Dear Casey Coats:

"Your temporary abandonment (TA) application for the well listed above has been approved. In accordance with K.A.R. 82-3-111 the TA status of this well will expire 10/08/2019.

- \* If you return this well to service or plug it, please notify the District Office.
- \* If you sell this well you are required to file a Transfer of Operator form, T-1.
- \* If the well will remain temporarily abandoned, you must submit a new TA application, CP-111, before 10/08/2019.

You may contact me at the number above if you have questions.

Very truly yours,

Duane Krueger"