

KANSAS CORPORATION COMMISSION
OIL & GAS CONSERVATION DIVISION

TEMPORARY ABANDONMENT WELL APPLICATION

OPERATOR: License#
Name:
Address 1:
Address 2:
City: State: Zip:
Contact Person:
Phone:
Contact Person Email:
Field Contact Person:
Field Contact Person Phone:

API No. 15-
Spot Description:
Sec. Twp. S. R.
feet from N / S Line of Section
feet from E / W Line of Section
GPS Location: Lat: , Long:
Datum: NAD27 NAD83 WGS84
County: Elevation: GL KB
Lease Name: Well #:
Well Type: Oil Gas OG WSW Other:
SWD Permit #: ENHR Permit #:
Gas Storage Permit #:
Spud Date: Date Shut-In:

Table with 7 columns: Conductor, Surface, Production, Intermediate, Liner, Tubing. Rows include Size, Setting Depth, Amount of Cement, Top of Cement, Bottom of Cement.

Casing Fluid Level from Surface: How Determined? Date:
Casing Squeeze(s): to w / sacks of cement, to w / sacks of cement. Date:
Do you have a valid Oil & Gas Lease? Yes No
Depth and Type: Junk in Hole at Tools in Hole at Casing Leaks: Yes No Depth of casing leak(s):
Type Completion: ALT. I ALT. II Depth of: DV Tool: w / sacks of cement Port Collar: w / sack of cement
Packer Type: Size: Inch Set at: Feet
Total Depth: Plug Back Depth: Plug Back Method:

Geological Date:

Table with 4 columns: Formation Name, Formation Top, Formation Base, Completion Information. Rows 1 and 2.

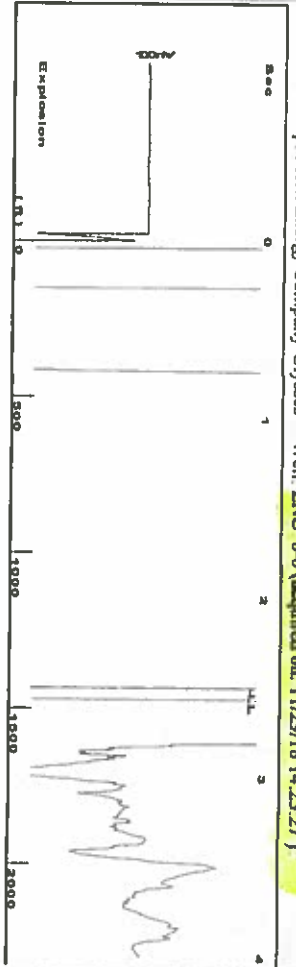
UNDER PENALTY OF PERJURY I HEREBY ATTEST THAT THE INFORMATION CONTAINED HEREIN IS TRUE AND CORRECT TO THE BEST OF MY KNOWLEDGE

Submitted Electronically

Do NOT Write in This Space - KCC USE ONLY
Date Tested: Results: Date Plugged: Date Repaired: Date Put Back in Service:
Review Completed by: Comments:
TA Approved: Yes Denied Date:

Mail to the Appropriate KCC Conservation Office:

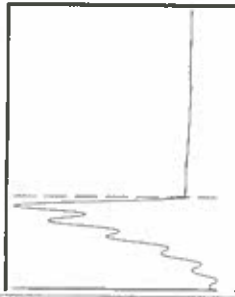
Table with 3 columns: District Office #, Address, Phone. Rows 1-4.



Liquid level calculated with user supplied Acoustic Velocity

Acoustic Velocity 1150 ft/s

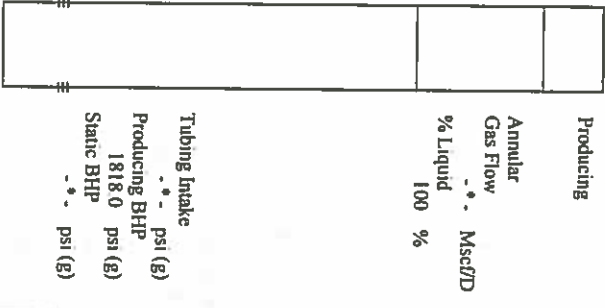
Time 2.494 sec
 Joints 45.2382 Jts
 Depth 1434.05 ft



Analysis Method: Acoustic Velocity

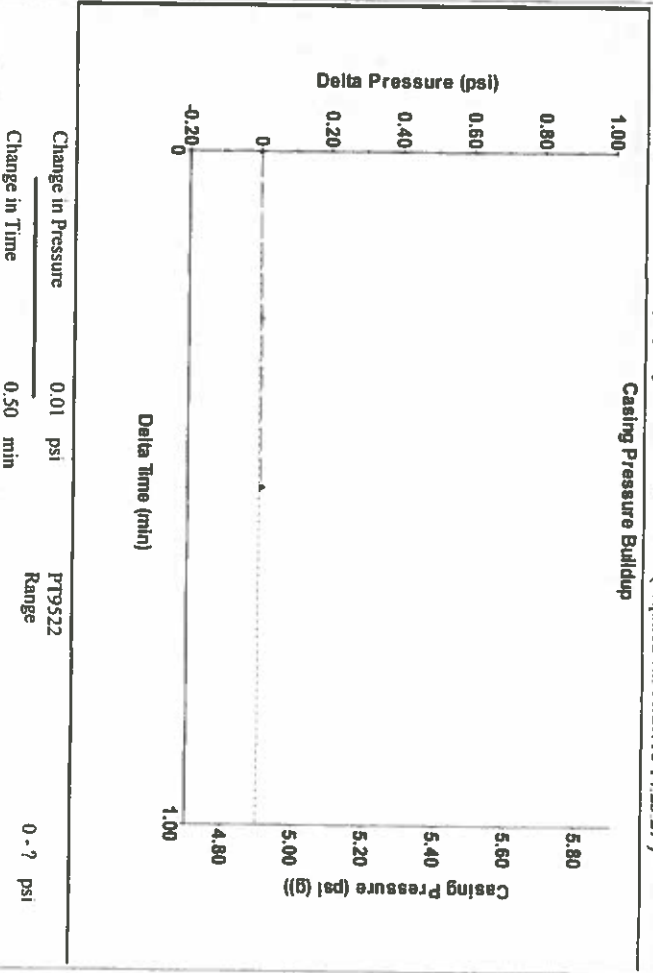
Group: Merit Energy Company-Ulysses Well: ENU 8-6 (acquired on: 11/29/18 14:23:27)

Production Current	Potential	Casing Pressure	Producing
Oil --*	Oil --*	4.9 psi (g)	Annular Gas Flow --*
Water --*	Water --*	Casing Pressure Buildup 0.006 psi	% Liquid 100 %
Gas --*	Gas --*	0.50 min	Mscf/D
IPR Method PBHP/SBHP	Vogel --*	Gas/Liquid Interface Pressure 5.8 psi (g)	
Production Efficiency 0.0			
Oil 40 deg API		Liquid Level Depth 1434.05 ft	
Water 1.05 Sp.Gr.H2O		Tubing Intake Depth --*	
Gas 0.85 Sp.Gr.AIR		Formation Depth 5420.00 ft	
Acoustic Velocity 1150 ft/s			



Formation Submergence 3986 ft
 Total Gaseous Liquid Column HT (TVD) 3986 ft
 Equivalent Gas Free Liquid HT (TVD)

Acoustic Test
 Tim Frydendall-Fluid Level Technician



Change in Pressure 0.01 psi
 Change in Time 0.50 min
 PT9522 Range
 0 - ? psi

Group: Merit Energy Company-Ulysses Well: ENU 8-6 (acquired on: 11/29/18 14:23:27)

Entered Acoustic Velocity for Liquid Level depth determination

STATE OF KANSAS

CORPORATION COMMISSION
CONSERVATION DIVISION
DISTRICT No. 1
210 E. FRONTVIEW, SUITE A
DODGE CITY, KS 67801



PHONE: 620-682-7933
<http://kcc.ks.gov/>

GOVERNOR JEFF COLYER, M.D.

SHARI FEIST ALBRECHT, CHAIR | JAY SCOTT EMLER, COMMISSIONER | DWIGHT D. KEEN, COMMISSIONER

December 07, 2018

Katherine McClurkan
Merit Energy Company, LLC
13727 Noel Road, Suite 1200
Dallas, TX 75240

Re: Temporary Abandonment
API 15-081-20940-00-01
Eubank North Unit 8-6
NE/4 Sec.09-29S-34W
Haskell County, Kansas

Dear Katherine McClurkan:

"Your temporary abandonment (TA) application for the well listed above has been approved. In accordance with K.A.R. 82-3-111 the TA status of this well will expire 12/07/2019.

- * If you return this well to service or plug it, please notify the District Office.
- * If you sell this well you are required to file a Transfer of Operator form, T-1.
- * If the well will remain temporarily abandoned, you must submit a new TA application, CP-111, before 12/07/2019.

You may contact me at the number above if you have questions.

Very truly yours,

Michael Maier"