

KANSAS CORPORATION COMMISSION
OIL & GAS CONSERVATION DIVISION

TEMPORARY ABANDONMENT WELL APPLICATION

OPERATOR: License#
Name:
Address 1:
Address 2:
City: State: Zip:
Contact Person:
Phone:
Contact Person Email:
Field Contact Person:
Field Contact Person Phone:

API No. 15-
Spot Description:
Sec. Twp. S. R.
GPS Location: Lat: Long:
Datum: NAD27 NAD83 WGS84
County: Elevation:
Lease Name: Well #:
Well Type: Oil Gas OG WSW Other:
SWD Permit #: ENHR Permit #:
Gas Storage Permit #:
Spud Date: Date Shut-In:

Table with 7 columns: Conductor, Surface, Production, Intermediate, Liner, Tubing. Rows include Size, Setting Depth, Amount of Cement, Top of Cement, Bottom of Cement.

Casing Fluid Level from Surface: How Determined? Date:
Casing Squeeze(s): to w / sacks of cement, to w / sacks of cement. Date:
Do you have a valid Oil & Gas Lease? Yes No
Depth and Type: Junk in Hole at Tools in Hole at Casing Leaks: Yes No Depth of casing leak(s):
Type Completion: ALT. I ALT. II Depth of: DV Tool: w / sacks of cement Port Collar: w / sack of cement
Packer Type: Size: Inch Set at: Feet
Total Depth: Plug Back Depth: Plug Back Method:

Geological Data:

Table with 4 columns: Formation Name, Formation Top, Formation Base, Completion Information. Rows 1 and 2.

UNDER PENALTY OF PERJURY I HEREBY ATTEST THAT THE INFORMATION CONTAINED HEREIN IS TRUE AND CORRECT TO THE BEST OF MY KNOWLEDGE

Submitted Electronically

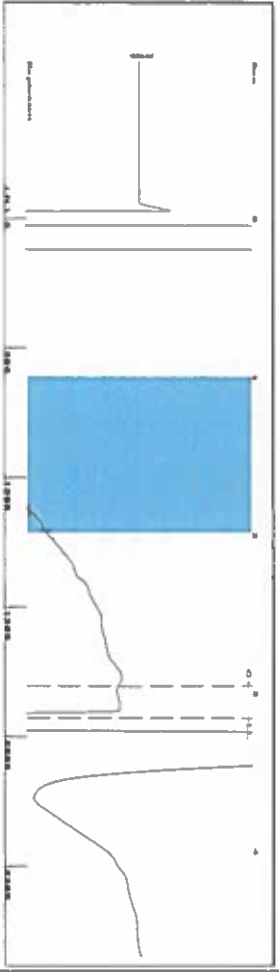
Do NOT Write in This Space - KCC USE ONLY
Date Tested: Results: Date Plugged: Date Repaired: Date Put Back in Service:
Review Completed by: Comments:
TA Approved: Yes Denied Date:

Mail to the Appropriate KCC Conservation Office:

Table with 2 columns: Office Address, Phone. Rows for District Office #1, #2, #3, #4.

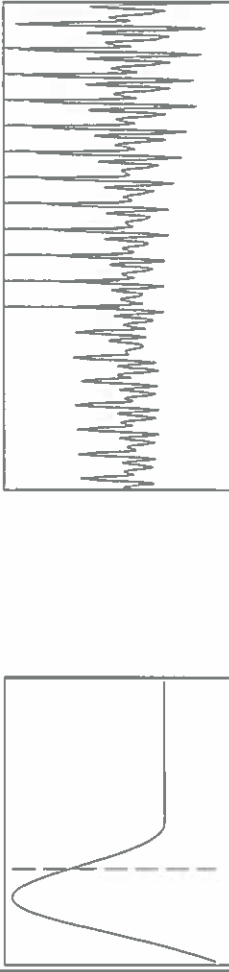


Group: SUBLETTE Well: Elizabeth Cox A-7 (acquired on: 11/06/18 13:35:46)



Filter Type High Pass  
 Manual Acoustic Velocity 191.73 ft/s  
 Automatic Collar Count Yes  
 Manual JTS/sec 18.797  
 Time 3.158 sec  
 Joints 60.8207 JIS  
 Depth 1928.02 ft

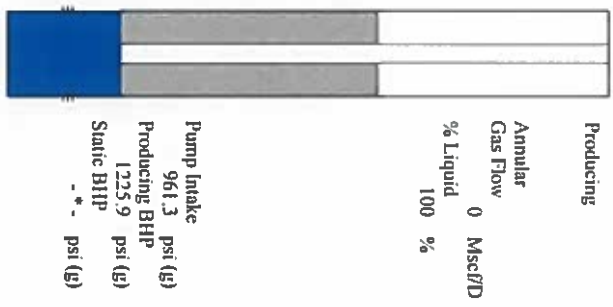
1.0 to 2.0 (Sec) |



Analysis Method: Automatic

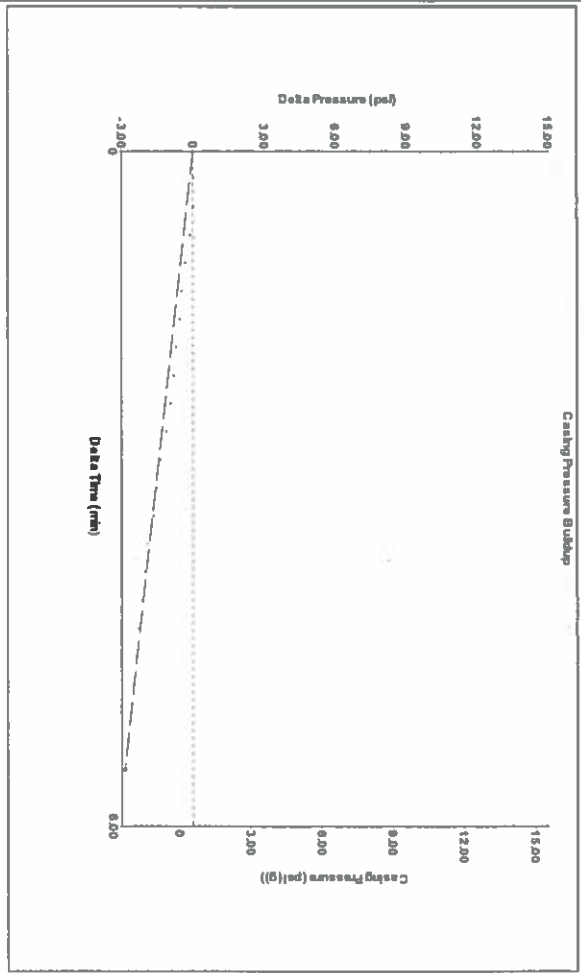
Group: SUBLETTE Well: Elizabeth Cox A-7 (acquired on: 11/06/18 13:35:46)

Production Current	Potential	Casing Pressure	Producing
Oil -*-	BBL/D	0.6 psi (g)	Annular Gas Flow 0 Mscf/D
Water -*-	BBL/D	Casing Pressure Buildup -2.9 psi	% Liquid 100 %
Gas -*-	Mscf/D	5.50 min	
IIPR Method PBHP/SBHP	Vogel	Gas/Liquid Interface Pressure 1.4 psi (g)	
Production Efficiency 0.0		Liquid Level Depth 1928.02 ft	
Oil 40 deg API		Pump Intake Depth 4833.00 ft	
Water 1.05 Sp.Gr.H2O		Formation Depth 5415.00 ft	
Gas 0.76 Sp.Gr.AIR			
Acoustic Velocity 1221.04 ft/s			



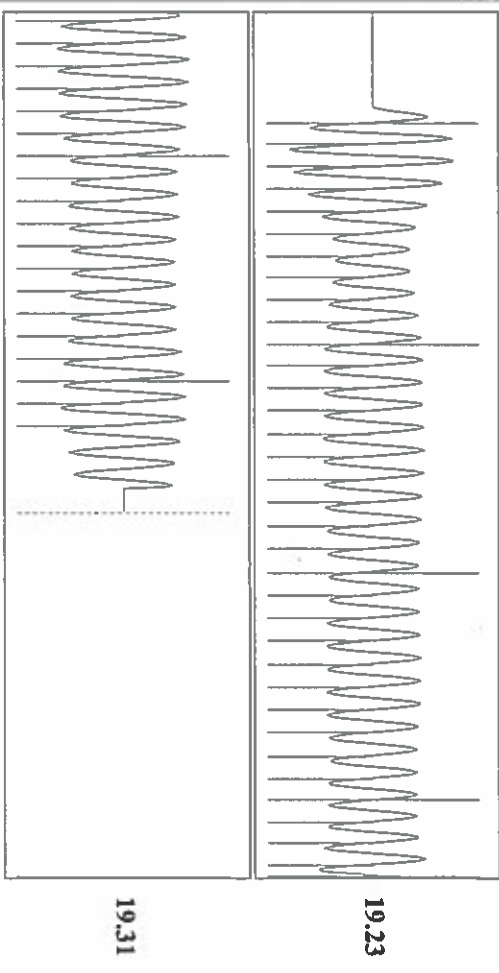
Pump Intake 961.3 psi (g)  
 Producing BHP 1225.9 psi (g)  
 Static BHP -\*- psi (g)

Group: SUBLETTE Well: Elizabeth Cox A-7 (acquired on: 11/06/18 13:35:46)



Change in Pressure -2.87 psi  
 Change in Time 5.50 min  
 PT14679 Range  
 0 - ? psi

Group: SUBLETTE Well: Elizabeth Cox A-7 (acquired on: 11/06/18 13:35:46)



Acoustic Velocity 1221.04 ft/s  
 Joints Per Second 19.2593 JIS/sec  
 Depth to liquid level 1928.02 ft  
 Automatic Collar Count Yes  
 Joints counted 52  
 Joints to liquid level 60.8207  
 Filter Width 16.797  
 Time to 1st Collar 0.256  
 20.797  
 2.956

# STATE OF KANSAS

CORPORATION COMMISSION  
CONSERVATION DIVISION  
DISTRICT No. 1  
210 E. FRONTVIEW, SUITE A  
DODGE CITY, KS 67801



PHONE: 620-682-7933  
<http://kcc.ks.gov/>

GOVERNOR JEFF COLYER, M.D.

SHARI FEIST ALBRECHT, CHAIR | JAY SCOTT EMLER, COMMISSIONER | DWIGHT D. KEEN, COMMISSIONER

November 20, 2018

Katherine McClurkan  
Merit Energy Company, LLC  
13727 Noel Roade, Suite 1200  
Dallas, TX 75240

Re: Temporary Abandonment  
API 15-081-21944-00-00  
Elizabeth A. Cox 7  
SW/4 Sec.08-30S-33W  
Haskell County, Kansas

Dear Katherine McClurkan:

"Your temporary abandonment (TA) application for the well listed above has been approved. In accordance with K.A.R. 82-3-111 the TA status of this well will expire 11/20/2019.

- \* If you return this well to service or plug it, please notify the District Office.
- \* If you sell this well you are required to file a Transfer of Operator form, T-1.
- \* If the well will remain temporarily abandoned, you must submit a new TA application, CP-111, before 11/20/2019.

You may contact me at the number above if you have questions.

Very truly yours,

Michael Maier"