

KANSAS CORPORATION COMMISSION
OIL & GAS CONSERVATION DIVISION

TEMPORARY ABANDONMENT WELL APPLICATION

OPERATOR: License#
Name:
Address 1:
Address 2:
City: State: Zip:
Contact Person:
Phone:
Contact Person Email:
Field Contact Person:
Field Contact Person Phone:

API No. 15-
Spot Description:
Sec. Twp. S. R.
GPS Location: Lat: Long:
Datum: NAD27 NAD83 WGS84
County: Elevation:
Lease Name: Well #:
Well Type: Oil Gas OG WSW Other:
SWD Permit #: ENHR Permit #:
Gas Storage Permit #:
Spud Date: Date Shut-In:

Table with 7 columns: Conductor, Surface, Production, Intermediate, Liner, Tubing. Rows include Size, Setting Depth, Amount of Cement, Top of Cement, Bottom of Cement.

Casing Fluid Level from Surface: How Determined? Date:
Casing Squeeze(s): to w / sacks of cement, to w / sacks of cement. Date:
Do you have a valid Oil & Gas Lease? Yes No
Depth and Type: Junk in Hole at Tools in Hole at Casing Leaks: Yes No Depth of casing leak(s):
Type Completion: ALT. I ALT. II Depth of: DV Tool: w / sacks of cement Port Collar: w / sack of cement
Packer Type: Size: Inch Set at: Feet
Total Depth: Plug Back Depth: Plug Back Method:

Geological Data:

Table with 4 columns: Formation Name, Formation Top, Formation Base, Completion Information. Rows 1 and 2.

UNDER PENALTY OF PERJURY I HEREBY ATTEST THAT THE INFORMATION CONTAINED HEREIN IS TRUE AND CORRECT TO THE BEST OF MY KNOWLEDGE

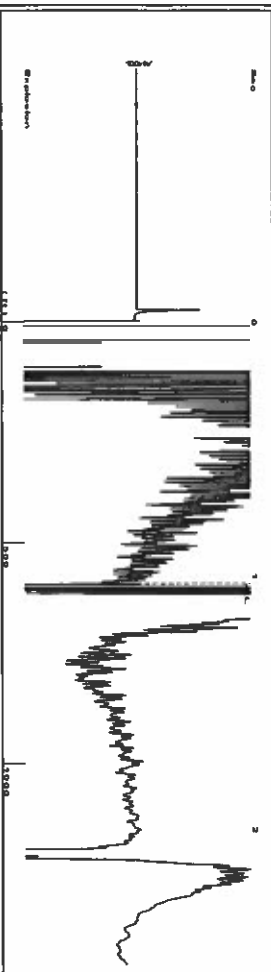
Submitted Electronically

Do NOT Write in This Space - KCC USE ONLY
Date Tested: Results: Date Plugged: Date Repaired: Date Put Back in Service:
Review Completed by: Comments:
TA Approved: Yes Denied Date:

Mail to the Appropriate KCC Conservation Office:

Table with 3 columns: District Office #, Address, Phone. Rows 1-4.

Group: MyWells Well: murphy gas unit c-1 (acquired on: 11/01/18 10:47:19)



Time 1.03 sec
Joints 18,683 Jts
Depth 592.25 ft

Liquid level calculated with user supplied Acoustic Velocity

Acoustic Velocity 1150 ft/s

Analysis Method: Acoustic Velocity

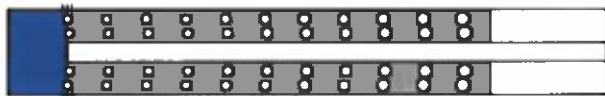
Group: MyWells Well: murphy gas unit c-1 (acquired on: 11/01/18 10:47:19)

Production Current Potential
Oil -*- BBL/D
Water -*- BBL/D
Gas -*- Mscf/D

IPR Method Vogel
PBHP/SBHP -*-
Production Efficiency 0.0

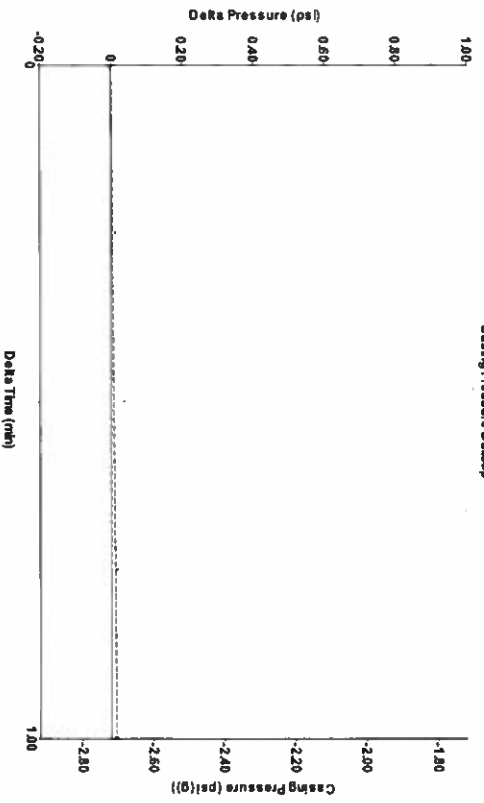
Casing Pressure -2.7 psi (g)
Casing Pressure Buildup 0.0 psi
Gas/Liquid Interface Pressure 1.00 min
Liqud Level Depth 592.25 ft
Pump Intake Depth 5099.00 ft
Formation Depth 5102.00 ft

Oil 40 deg API
Water 1.05 Sp.Gr:H2O
Gas 0.85 Sp.Gr:AIR
Acoustic Velocity 1150 ft/s



Producing Annular Gas Flow 0 Mscf/D
% Liquid 100 %
Pump Intake 1442.6 psi (g)
Producing BHP 1444.0 psi (g)
Static BHP -*- psi (g)

Group: MyWells Well: murphy gas unit c-1 (acquired on: 11/01/18 10:47:19)



Change in Pressure 0.01 psi
Change in Time 1.00 min
PT9424 Range
0 - ? psi

Group: MyWells Well: murphy gas unit c-1 (acquired on: 11/01/18 10:47:19)

Entered Acoustic Velocity for Liquid Level depth determination

STATE OF KANSAS

CORPORATION COMMISSION
CONSERVATION DIVISION
DISTRICT No. 1
210 E. FRONTVIEW, SUITE A
DODGE CITY, KS 67801



PHONE: 620-682-7933
<http://kcc.ks.gov/>

GOVERNOR JEFF COLYER, M.D.

SHARI FEIST ALBRECHT, CHAIR | JAY SCOTT EMLER, COMMISSIONER | DWIGHT D. KEEN, COMMISSIONER

December 07, 2018

Katherine McClurkan
Merit Energy Company, LLC
13727 Noel Road, Suite 1200
Dallas, TX 75240

Re: Temporary Abandonment
API 15-129-10126-00-00
Murphy GU C 1
NW/4 Sec.14-32S-41W
Morton County, Kansas

Dear Katherine McClurkan:

"Your temporary abandonment (TA) application for the well listed above has been approved. In accordance with K.A.R. 82-3-111 the TA status of this well will expire 12/07/2019.

- * If you return this well to service or plug it, please notify the District Office.
- * If you sell this well you are required to file a Transfer of Operator form, T-1.
- * If the well will remain temporarily abandoned, you must submit a new TA application, CP-111, before 12/07/2019.

You may contact me at the number above if you have questions.

Very truly yours,

Michael Maier"