

KANSAS CORPORATION COMMISSION
OIL & GAS CONSERVATION DIVISION

TEMPORARY ABANDONMENT WELL APPLICATION

OPERATOR: License#
Name:
Address 1:
Address 2:
City: State: Zip:
Contact Person:
Phone:
Contact Person Email:
Field Contact Person:
Field Contact Person Phone:

API No. 15-
Spot Description:
Sec. Twp. S. R.
GPS Location: Lat: Long:
Datum: NAD27 NAD83 WGS84
County: Elevation:
Lease Name: Well #:
Well Type: Oil Gas OG WSW Other:
SWD Permit #: ENHR Permit #:
Gas Storage Permit #:
Spud Date: Date Shut-In:

Table with 7 columns: Conductor, Surface, Production, Intermediate, Liner, Tubing. Rows include Size, Setting Depth, Amount of Cement, Top of Cement, Bottom of Cement.

Casing Fluid Level from Surface: How Determined? Date:
Casing Squeeze(s): to w / sacks of cement, to w / sacks of cement. Date:
Do you have a valid Oil & Gas Lease? Yes No
Depth and Type: Junk in Hole at Tools in Hole at Casing Leaks: Yes No Depth of casing leak(s):
Type Completion: ALT. I ALT. II Depth of: DV Tool: w / sacks of cement Port Collar: w / sack of cement
Packer Type: Size: Inch Set at: Feet
Total Depth: Plug Back Depth: Plug Back Method:

Geological Data:

Table with 4 columns: Formation Name, Formation Top, Formation Base, Completion Information. Rows 1 and 2.

UNDER PENALTY OF PERJURY I HEREBY ATTEST THAT THE INFORMATION CONTAINED HEREIN IS TRUE AND CORRECT TO THE BEST OF MY KNOWLEDGE

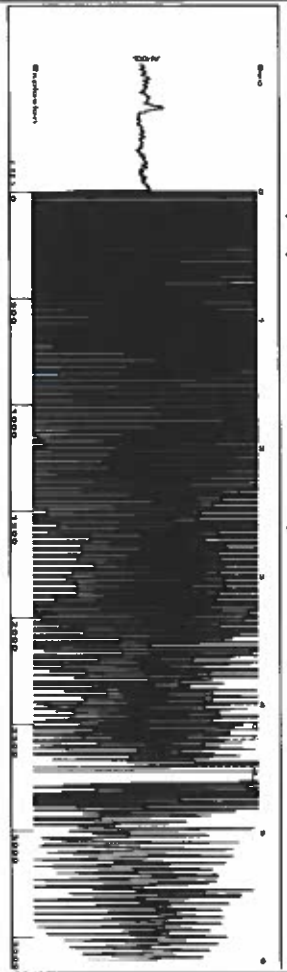
Submitted Electronically

Do NOT Write in This Space - KCC USE ONLY
Date Tested: Results: Date Plugged: Date Repaired: Date Put Back in Service:
Review Completed by: Comments:
TA Approved: Yes Denied Date:

Mail to the Appropriate KCC Conservation Office:

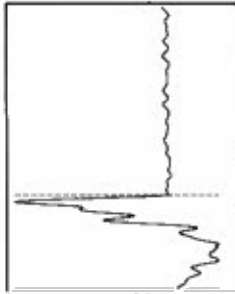
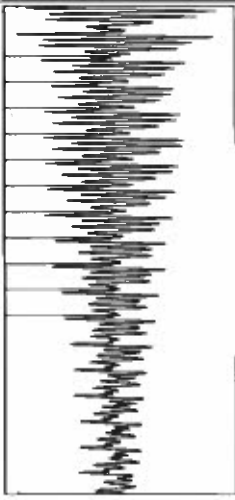
Table with 3 columns: District Office, Address, Phone. Rows for District Office #1, #2, #3, #4.

Group: MyWells Well: Boaldin 1-16 (acquired on: 11/30/18 10:46:48)



Filter Type High Pass Automatic Collar Count Yes
 Manual Acoustic Velo 191.73 Manual JTS/sec 18.797
 Time 4.484 sec
 Joints 85.196 Jts
 Depth 2700.71 ft

[0.5 to 1.5 (Sec)]



Analysis Method: Automatic

Group: MyWells Well: Boaldin 1-16 (acquired on: 11/30/18 10:46:48)

Production Current Potential Casing Pressure
 Oil - * - * - BBL/D 446.4 psi (g)
 Water - * - * - BBL/D Casing Pressure Buildup
 Gas - * - * - Mscf/D 0.0 psi
 IPR Method Vogel 0.25 min
 PBHP/SBHP - * - * - Gas/Liquid Interface Pressure
 Production Efficiency 0.0 481.1 psi (g)

Liquid Level Depth 2700.71 ft
 Pump Intake Depth 2889.00 ft
 Formation Depth 2906.00 ft

Oil 40 deg API
 Water 1.05 Sp.Gr.H2O
 Gas 0.74 Sp.Gr.AIR
 Acoustic Velocity 1204.6 ft/s

Formation Submergence 188 ft
 Total Gasocous Liquid Column HT (TVD) 161 ft
 Equivalent Gas Free Liquid HT (TVD)

Acoustic Test

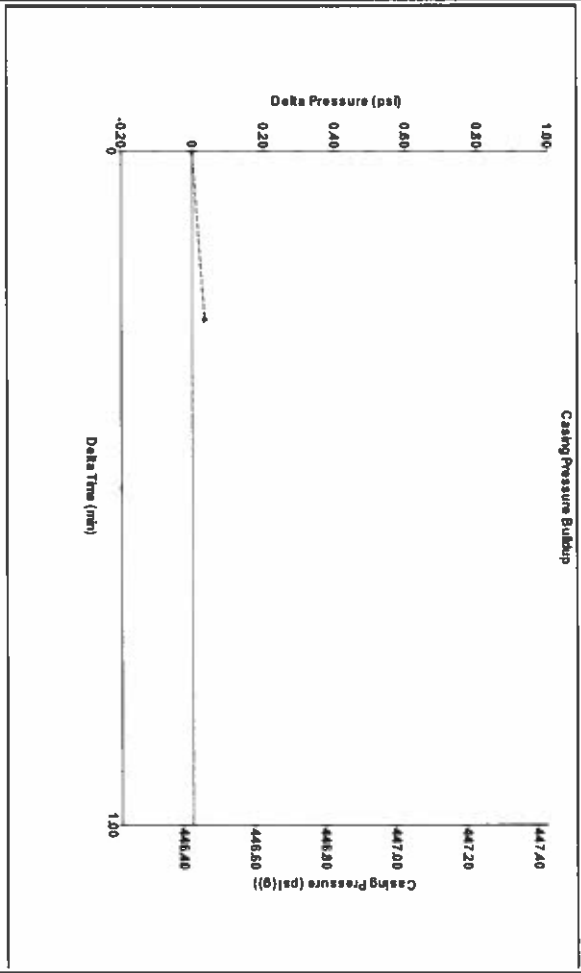


Producing

Annular Gas Flow 4 Mscf/D
 % Liquid 86 %

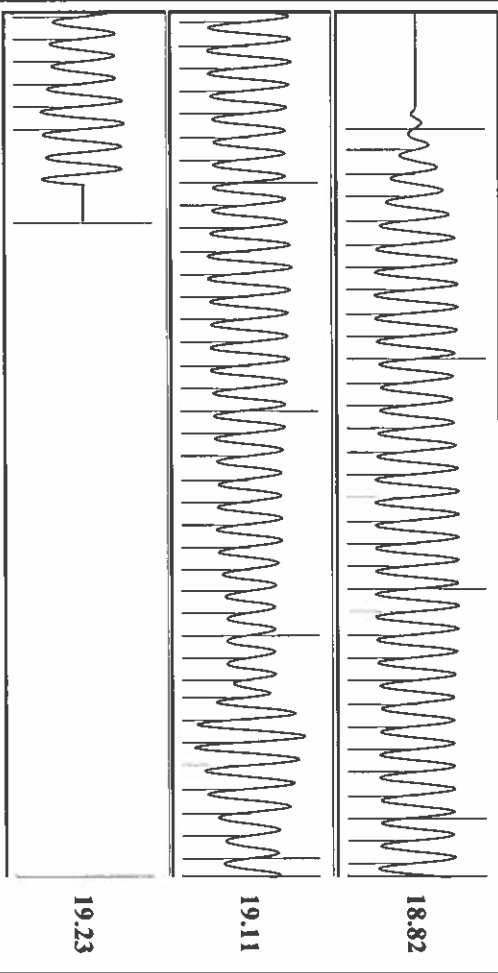
Pump Intake 533.7 psi (g)
 Producing BHP 540.6 psi (g)
 Static BHP - * - * - psi (g)

Group: MyWells Well: Boaldin 1-16 (acquired on: 11/30/18 10:46:48)



Change in Pressure 0.03 psi PTT11249
 Change in Time 0.25 min Range 0 - ? psi

Group: MyWells Well: Boaldin 1-16 (acquired on: 11/30/18 10:46:48)



Acoustic Velocity 1204.6 ft/s Joints counted 76
 Joints Per Second 19 Joints to liquid level 85.196
 Depth to liquid level 2700.71 ft Filter Width 16.797
 Automatic Collar Count Yes Time to 1st Collar 0.268

STATE OF KANSAS

CORPORATION COMMISSION
CONSERVATION DIVISION
DISTRICT No. 1
210 E. FRONTVIEW, SUITE A
DODGE CITY, KS 67801



PHONE: 620-682-7933
<http://kcc.ks.gov/>

GOVERNOR JEFF COLYER, M.D.

SHARI FEIST ALBRECHT, CHAIR | JAY SCOTT EMLER, COMMISSIONER | DWIGHT D. KEEN, COMMISSIONER

December 07, 2018

Katherine McClurkan
Merit Energy Company, LLC
-102.005025
Dallas, TX 75240

Re: Temporary Abandonment
API 15-129-21202-00-01
Boaldin 1-16
SW/4 Sec.16-35S-43W
Morton County, Kansas

Dear Katherine McClurkan:

"Your temporary abandonment (TA) application for the well listed above has been approved. In accordance with K.A.R. 82-3-111 the TA status of this well will expire 12/07/2019.

- * If you return this well to service or plug it, please notify the District Office.
- * If you sell this well you are required to file a Transfer of Operator form, T-1.
- * If the well will remain temporarily abandoned, you must submit a new TA application, CP-111, before 12/07/2019.

You may contact me at the number above if you have questions.

Very truly yours,

Michael Maier"