

KANSAS CORPORATION COMMISSION
OIL & GAS CONSERVATION DIVISION

TEMPORARY ABANDONMENT WELL APPLICATION

OPERATOR: License#
Name:
Address 1:
Address 2:
City: State: Zip:
Contact Person:
Phone:
Contact Person Email:
Field Contact Person:
Field Contact Person Phone:

API No. 15-
Spot Description:
Sec. Twp. S. R.
GPS Location: Lat: Long:
Datum: NAD27 NAD83 WGS84
County: Elevation:
Lease Name: Well #:
Well Type: Oil Gas OG WSW Other:
SWD Permit #: ENHR Permit #:
Gas Storage Permit #:
Spud Date: Date Shut-In:

Table with 7 columns: Conductor, Surface, Production, Intermediate, Liner, Tubing. Rows include Size, Setting Depth, Amount of Cement, Top of Cement, Bottom of Cement.

Casing Fluid Level from Surface: How Determined? Date:
Casing Squeeze(s): to w / sacks of cement, to w / sacks of cement. Date:
Do you have a valid Oil & Gas Lease? Yes No
Depth and Type: Junk in Hole at Tools in Hole at Casing Leaks: Yes No Depth of casing leak(s):
Type Completion: ALT. I ALT. II Depth of: DV Tool: w / sacks of cement Port Collar: w / sack of cement
Packer Type: Size: Inch Set at: Feet
Total Depth: Plug Back Depth: Plug Back Method:

Geological Data:

Table with 4 columns: Formation Name, Formation Top, Formation Base, Completion Information. Rows 1 and 2.

UNDER PENALTY OF PERJURY I HEREBY ATTEST THAT THE INFORMATION CONTAINED HEREIN IS TRUE AND CORRECT TO THE BEST OF MY KNOWLEDGE

Submitted Electronically

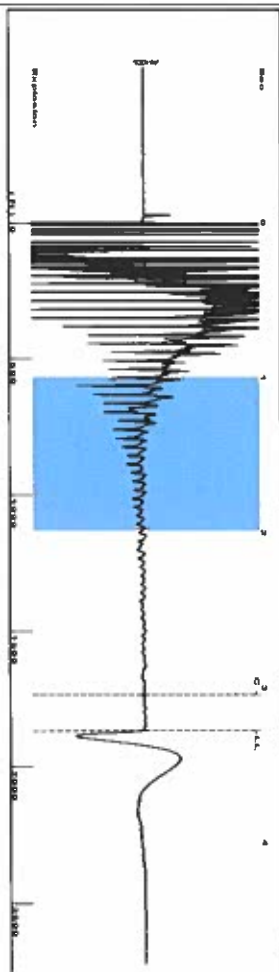
Do NOT Write in This Space - KCC USE ONLY
Date Tested: Results: Date Plugged: Date Repaired: Date Put Back in Service:
Review Completed by: Comments:
TA Approved: Yes Denied Date:

Mail to the Appropriate KCC Conservation Office:

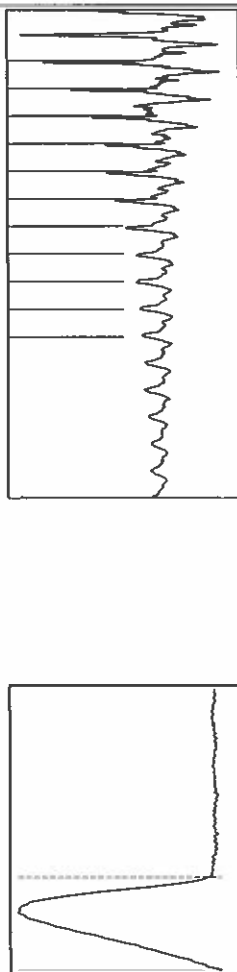
Table with 3 columns: District Office #, Address, Phone. Rows 1-4.

Group: MyWells Well: ~~wmsu 903~~ (acquired on: 11/06/18 08:57:33)

wmsu 902



Filter Type High Pass Automatic Collar Count Yes
 Manual Acoustic Velocity 118.17 ft/s Manual JTS/sec 17.6367
 Time 3.276 sec
 Joints 58.8362 J/s
 Depth 1865.11 ft

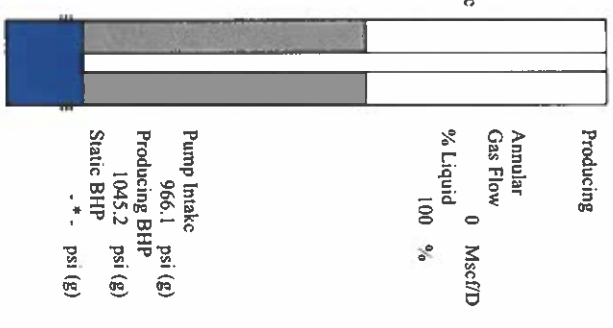


Analysis Method: Automatic

Group: MyWells Well: ~~wmsu 903~~ (acquired on: 11/06/18 08:57:33)

wmsu 902

Production Current	Potential	Casing Pressure	Producing
Oil -*- BBL/D	-*- BBL/D	-0.6 psi (g)	Annular Gas Flow
Water -*- BBL/D	-*- BBL/D	Casing Pressure Buildup	% Liquid
Gas -*- Misc/D	-*- Misc/D	psi	100 %
IPR Method	Vogel	Gas/Liquid Interface Pressure	
PBHP/SBHP	-*-	0.1 psi (g)	
Production Efficiency	0.0		
Oil 40 deg API		Liquid Level Depth	
Water 1.05 Sp.Gr:H2O		1865.11 ft	
Gas 0.84 Sp.Gr:AIR		Pump Intake Depth	
Acoustic Velocity	1138.65 ft/s	4798.00 ft	
		Formation Depth	
		4972.00 ft	



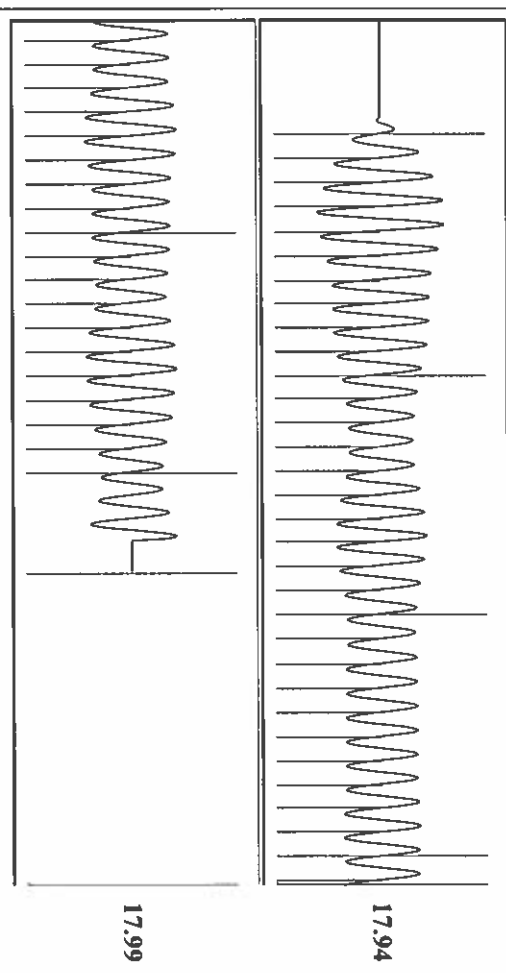
Pump Intake 966.1 psi (g)
 Producing BHP 1045.2 psi (g)
 Static BHP -*- psi (g)

Group: MyWells Well: wmsu 903 (acquired on: 11/06/18 08:57:33)

NO PRESSURE DATA AVAILABLE

Change in Pressure 0.00 psi PT9424
 Change in Time 0.00 min Range 0 - ? psi

Group: MyWells Well: wmsu 903 (acquired on: 11/06/18 08:57:33)



Acoustic Velocity	1138.65 ft/s	Joints counted	50
Joints Per Second	17.9598 JTS/sec	Joints to liquid level	58.8362
Depth to liquid level	1865.11 ft	Filter Width	15.6367
Automatic Collar Count	Yes	Time to 1st Collar	0.26

STATE OF KANSAS

CORPORATION COMMISSION
CONSERVATION DIVISION
DISTRICT No. 1
210 E. FRONTVIEW, SUITE A
DODGE CITY, KS 67801



PHONE: 620-682-7933
<http://kcc.ks.gov/>

GOVERNOR JEFF COLYER, M.D.

SHARI FEIST ALBRECHT, CHAIR | JAY SCOTT EMLER, COMMISSIONER | DWIGHT D. KEEN, COMMISSIONER

December 07, 2018

Katherine McClurkan
Merit Energy Company, LLC
13727 Noel Road, Suite 1200
Dallas, TX 75240

Re: Temporary Abandonment
API 15-129-21518-00-00
Wilbirton Morrow Sand Unit 902
NE/4 Sec.32-34S-41W
Morton County, Kansas

Dear Katherine McClurkan:

"Your temporary abandonment (TA) application for the well listed above has been approved. In accordance with K.A.R. 82-3-111 the TA status of this well will expire 12/07/2019.

- * If you return this well to service or plug it, please notify the District Office.
- * If you sell this well you are required to file a Transfer of Operator form, T-1.
- * If the well will remain temporarily abandoned, you must submit a new TA application, CP-111, before 12/07/2019.

You may contact me at the number above if you have questions.

Very truly yours,

Michael Maier"