

KANSAS CORPORATION COMMISSION
OIL & GAS CONSERVATION DIVISION

TEMPORARY ABANDONMENT WELL APPLICATION

OPERATOR: License#
Name:
Address 1:
Address 2:
City: State: Zip:
Contact Person:
Phone:
Contact Person Email:
Field Contact Person:
Field Contact Person Phone:

API No. 15-
Spot Description:
Sec. Twp. S. R.
feet from N / S Line of Section
feet from E / W Line of Section
GPS Location: Lat: , Long:
Datum: NAD27 NAD83 WGS84
County: Elevation: GL KB
Lease Name: Well #:
Well Type: Oil Gas OG WSW Other:
SWD Permit #: ENHR Permit #:
Gas Storage Permit #:
Spud Date: Date Shut-In:

Table with 7 columns: Conductor, Surface, Production, Intermediate, Liner, Tubing. Rows include Size, Setting Depth, Amount of Cement, Top of Cement, Bottom of Cement.

Casing Fluid Level from Surface: How Determined? Date:
Casing Squeeze(s): to w / sacks of cement, to w / sacks of cement. Date:
Do you have a valid Oil & Gas Lease? Yes No
Depth and Type: Junk in Hole at Tools in Hole at Casing Leaks: Yes No Depth of casing leak(s):
Type Completion: ALT. I ALT. II Depth of: DV Tool: w / sacks of cement Port Collar: w / sack of cement
Packer Type: Size: Inch Set at: Feet
Total Depth: Plug Back Depth: Plug Back Method:

Geological Data:

Table with 4 columns: Formation Name, Formation Top, Formation Base, Completion Information. Rows 1 and 2.

UNDER PENALTY OF PERJURY I HEREBY ATTEST THAT THE INFORMATION CONTAINED HEREIN IS TRUE AND CORRECT TO THE BEST OF MY KNOWLEDGE

Submitted Electronically

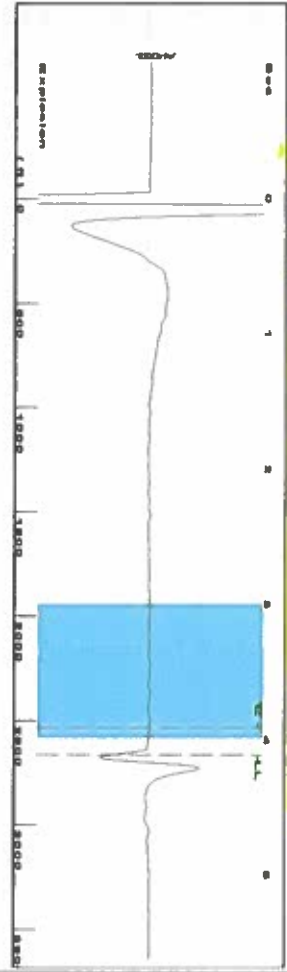
Do NOT Write in This Space - KCC USE ONLY
Date Tested: Results: Date Plugged: Date Repaired: Date Put Back in Service:
Review Completed by: Comments:
TA Approved: Yes Denied Date:

Mail to the Appropriate KCC Conservation Office:

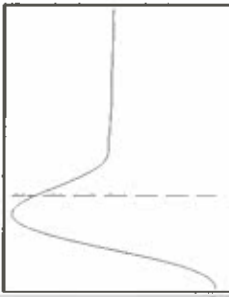
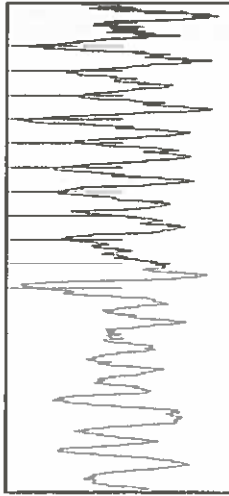
Table with 2 columns: Office Address, Phone. Rows for District Office #1, #2, #3, #4.



Group: Liberal TAD Wells Well: HH Good I (acquired on 11/05/18 11:18:21)



Filter Type High Pass Automatic Collar Count Yes  
 Manual Acoustic Vel 1280 81 N/s Manual JTS/sec 20.202  
 Time 4.11 sec  
 Joints 84.0166 J/s  
 Depth 2663.33 ft



**Analysis Method: Automatic**

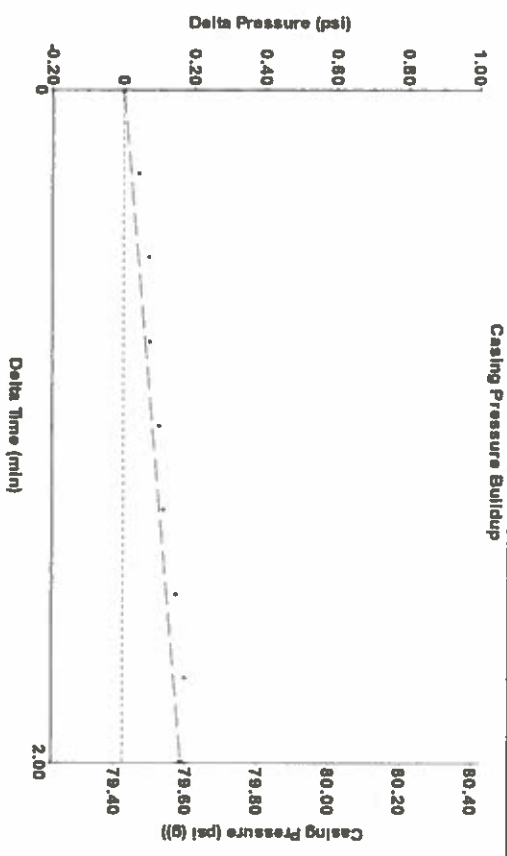
Group: Liberal TAD Wells Well: HH Good I (acquired on 11/05/18 11:18:21)

Production	Potential	Casing Pressure	Static
Current	BBL/D	79.4 psi (g)	
Oil	BBL/D	Casing Pressure Buildup	Oil Column Height
Water	Mscf/D	0.2 psi	MD 0 ft
Gas		2.00 min	
IPR Method	Vogel	Gas/Liquid Interface Pressure	
PBHP/SBHP		85.5 psi (g)	
Production Efficiency	0.0		
Oil 40 deg/API		Liquid Level Depth	Water Column Height
Water 1.05 Sp.Gr:H2O		2663.33 ft	MD 59 ft
Gas 0.70 Sp.Gr:AIR		Pump Intake Depth	
		2689.00 ft	
Acoustic Velocity		Formation Depth	
		2722.00 ft	
		Static BHP	
		112.2 psi (g)	



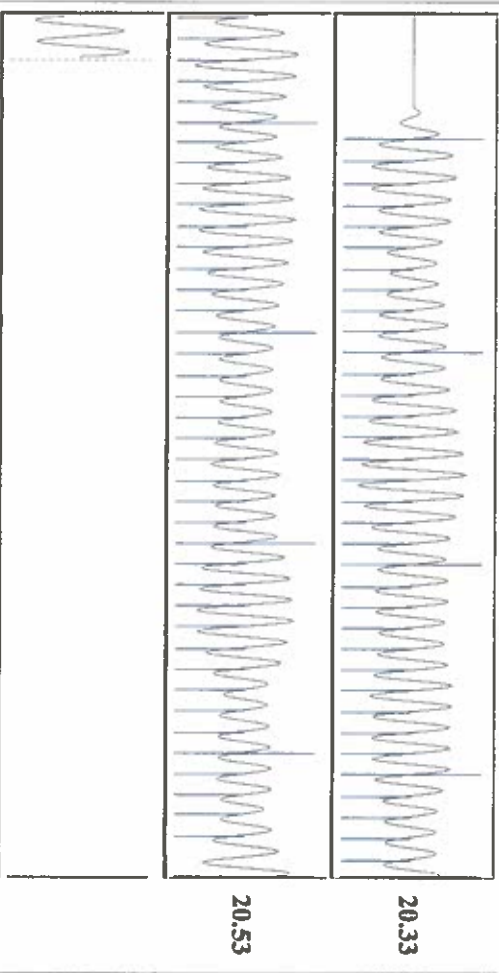
Spot @ 200XX

Group: Liberal TAD Wells Well: HH Good I (acquired on: 11/05/18 11:18:21)



Change in Pressure 0.16 psi PT11249  
 Change in Time 2.00 min Range 0 - 7 psi

Group: Liberal TAD Wells Well: HH Good I (acquired on: 11/05/18 11:18:21)



Acoustic Velocity 1296.02 ft/s Joints counted 74  
 Joints Per Second 20.442 J/s Joints to liquid level 84.0166  
 Depth to liquid level 2663.33 ft Filter Width 18.202  
 Automatic Collar Count Yes Time to 1st Collar 0.288 3.908

# STATE OF KANSAS

CORPORATION COMMISSION  
CONSERVATION DIVISION  
DISTRICT No. 1  
210 E. FRONTVIEW, SUITE A  
DODGE CITY, KS 67801



PHONE: 620-682-7933  
<http://kcc.ks.gov/>

GOVERNOR JEFF COLYER, M.D.

SHARI FEIST ALBRECHT, CHAIR | JAY SCOTT EMLER, COMMISSIONER | DWIGHT D. KEEN, COMMISSIONER

November 08, 2018

Katherine McClurkan  
Merit Energy Company, LLC  
13727 Noel Road, Suite 1200  
Dallas, TX 75240

Re: Temporary Abandonment  
API 15-175-00496-00-00  
Good H H 1  
NW/4 Sec.33-31S-33W  
Seward County, Kansas

Dear Katherine McClurkan:

"Your temporary abandonment (TA) application for the well listed above has been approved. In accordance with K.A.R. 82-3-111 the TA status of this well will expire 11/08/2019.

- \* If you return this well to service or plug it, please notify the District Office.
- \* If you sell this well you are required to file a Transfer of Operator form, T-1.
- \* If the well will remain temporarily abandoned, you must submit a new TA application, CP-111, before 11/08/2019.

You may contact me at the number above if you have questions.

Very truly yours,

Michael Maier"